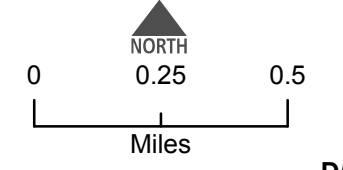
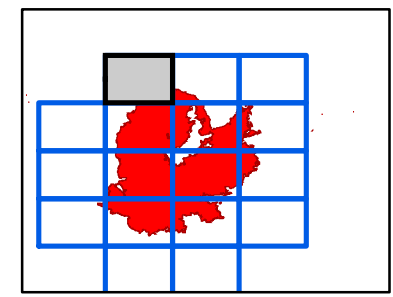
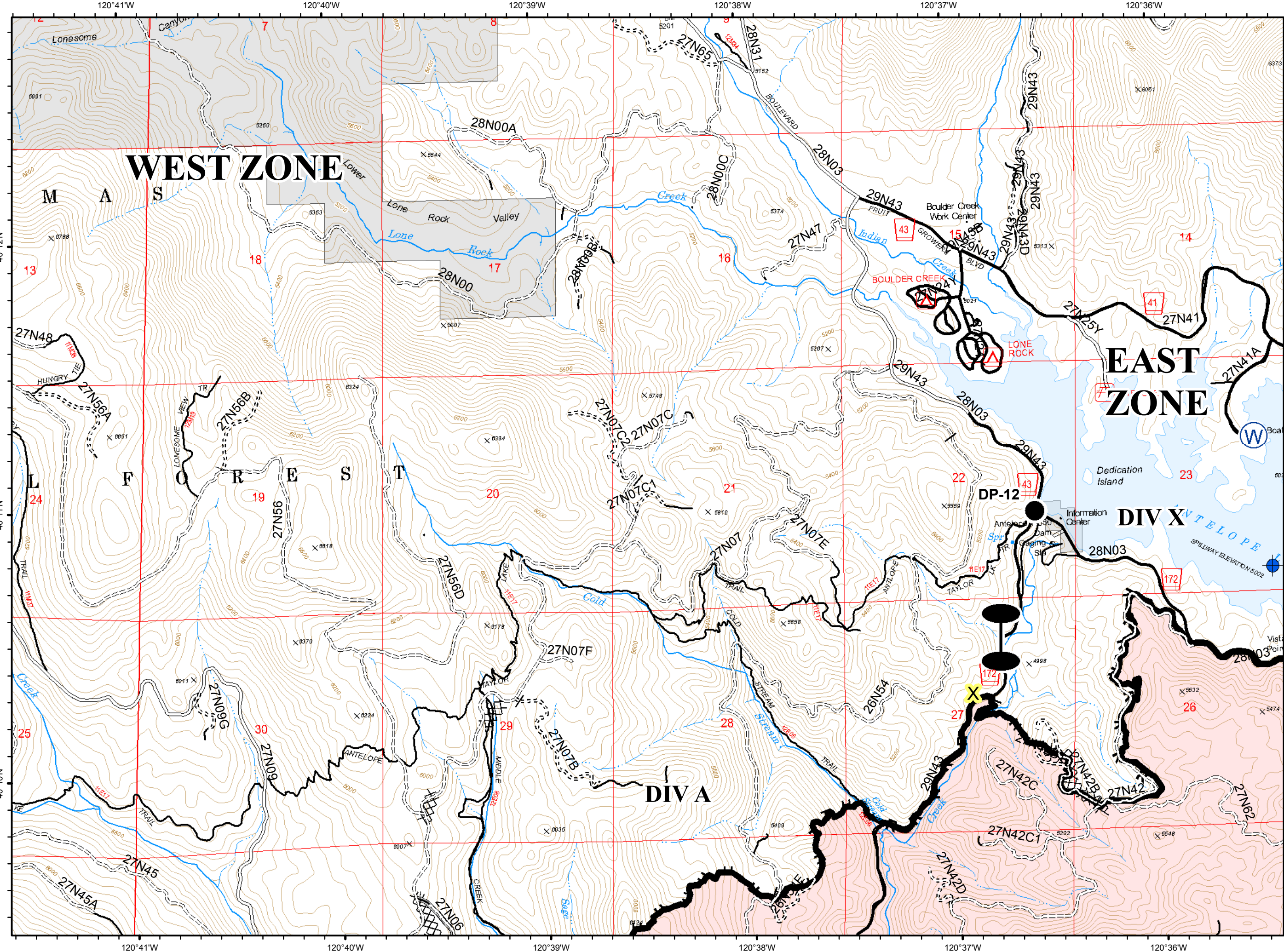


D5



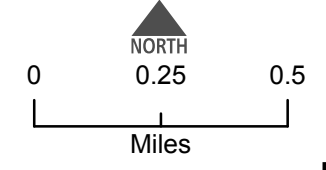
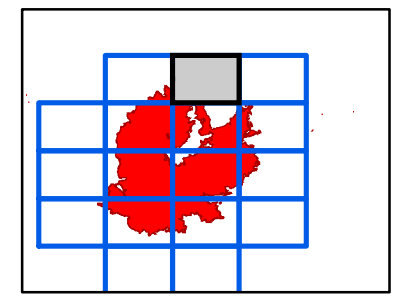
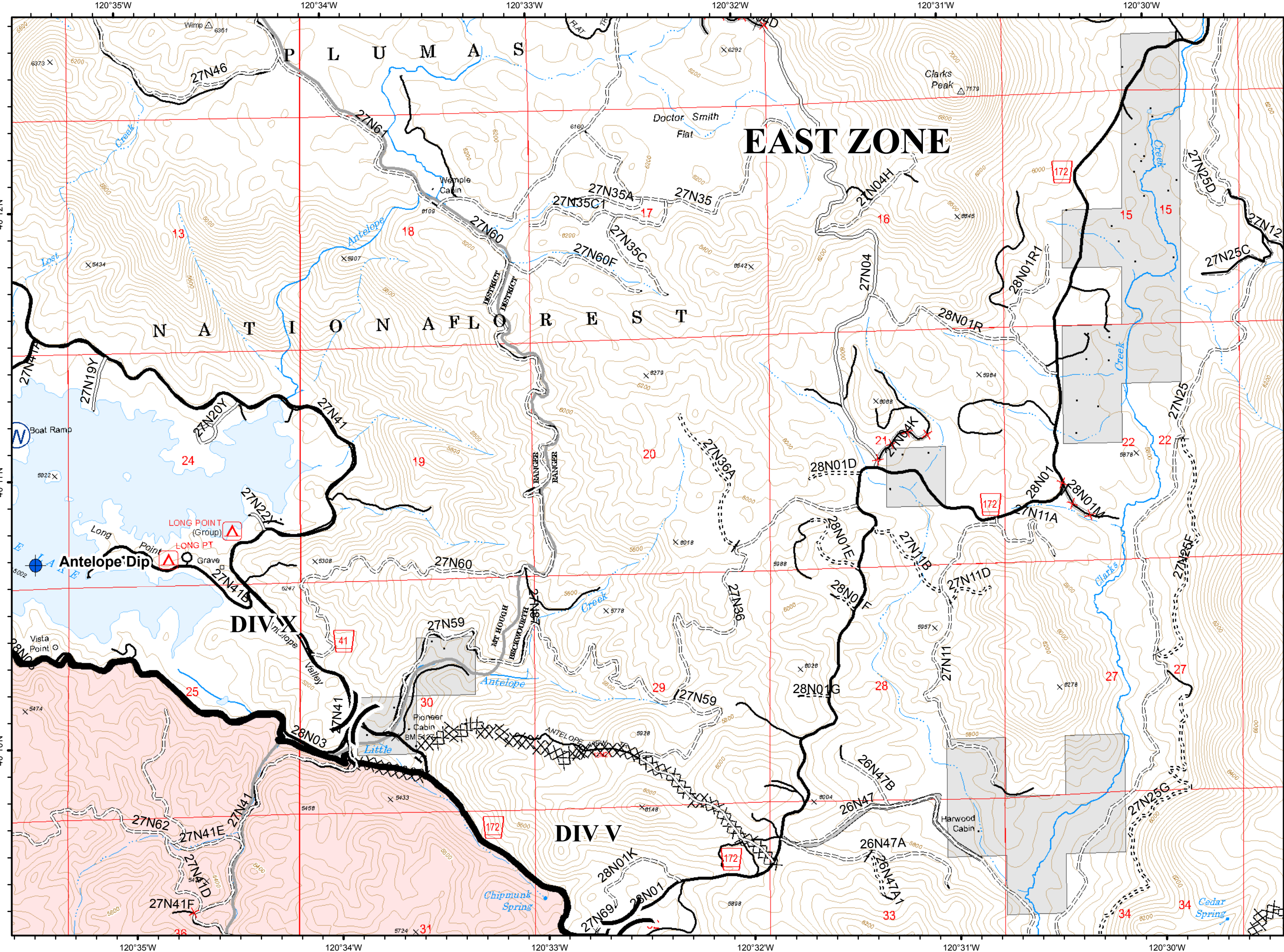
- Dip Site
- Drop Point
- Water Source
- Zone Break
- Completed Line
- Completed Dozer Line
- H - Completed Hand Line
- R - Road as Completed Line
- Access or Improved Road
- Basic Custodial Care (Closed)
- High Clearance Roads
- Suitable for Passenger Cars
- High Degree of Comfort travelRoute
- X Known Mine Hazards



D6



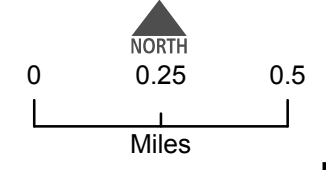
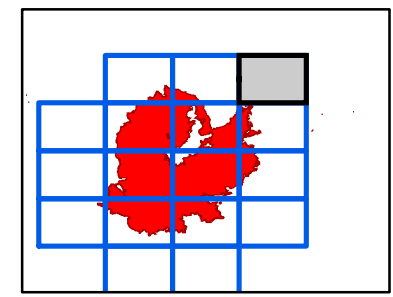
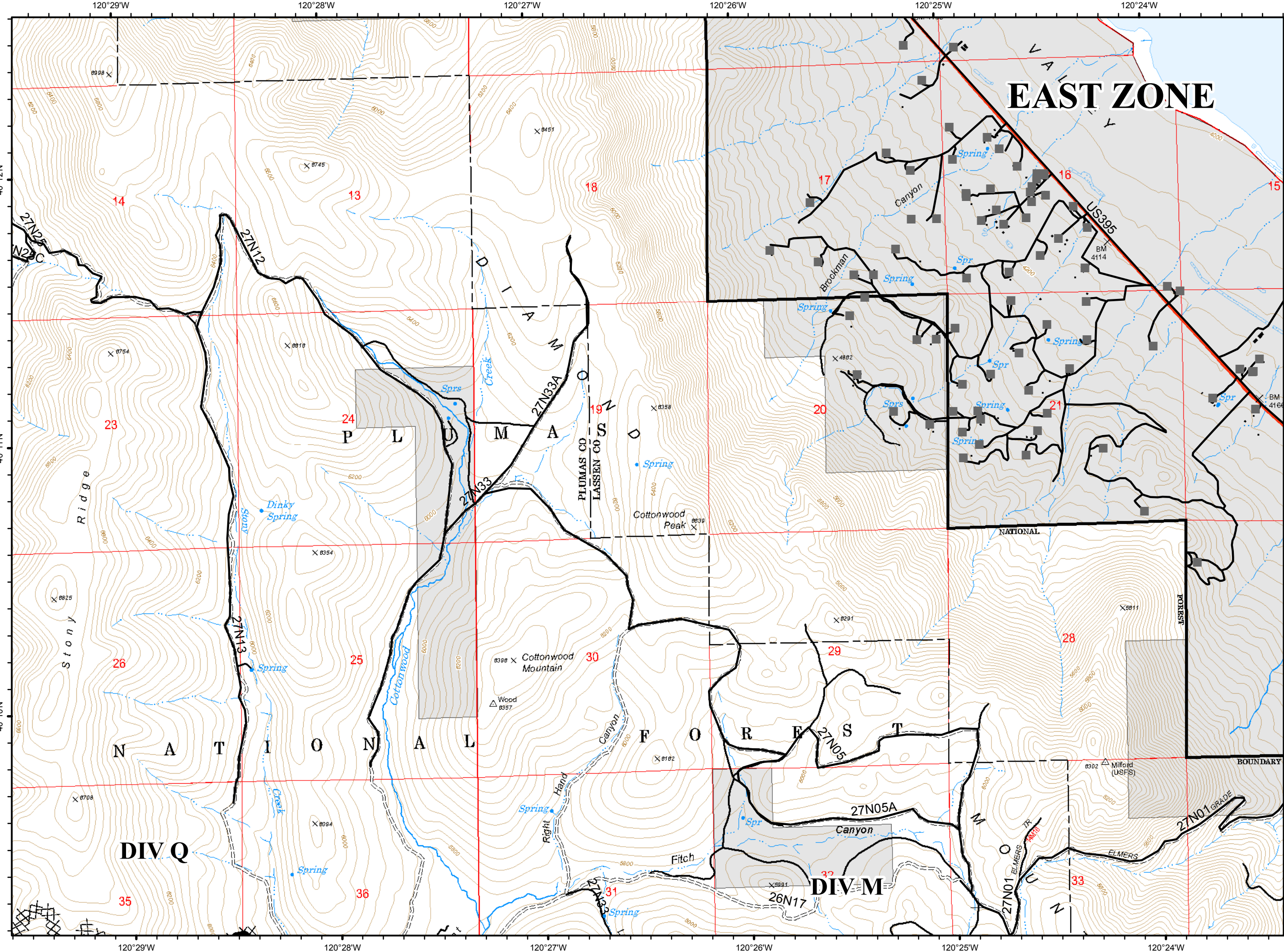
- Dip Site
- Water Source
- Division Break
- Completed Line
- Completed Dozer Line
- Completed Hand Line
- Access or Improved Road
- Milford Roads
- Basic Custodial Care (Closed)
- High Clearance Roads
- Suitable for Passenger Cars
- High Degree of Comfort
- NFSR Decommissioned
- Undetermined Decommissioned
- travelRoute



D7



- Completed Line
- Completed Dozer Line
- Milford Roads
- NOT - NOT NEEDED
- US - US HIGHWAY OR ROUTE
- High Clearance Roads
- travelRoute
- Milford Habitable Structures

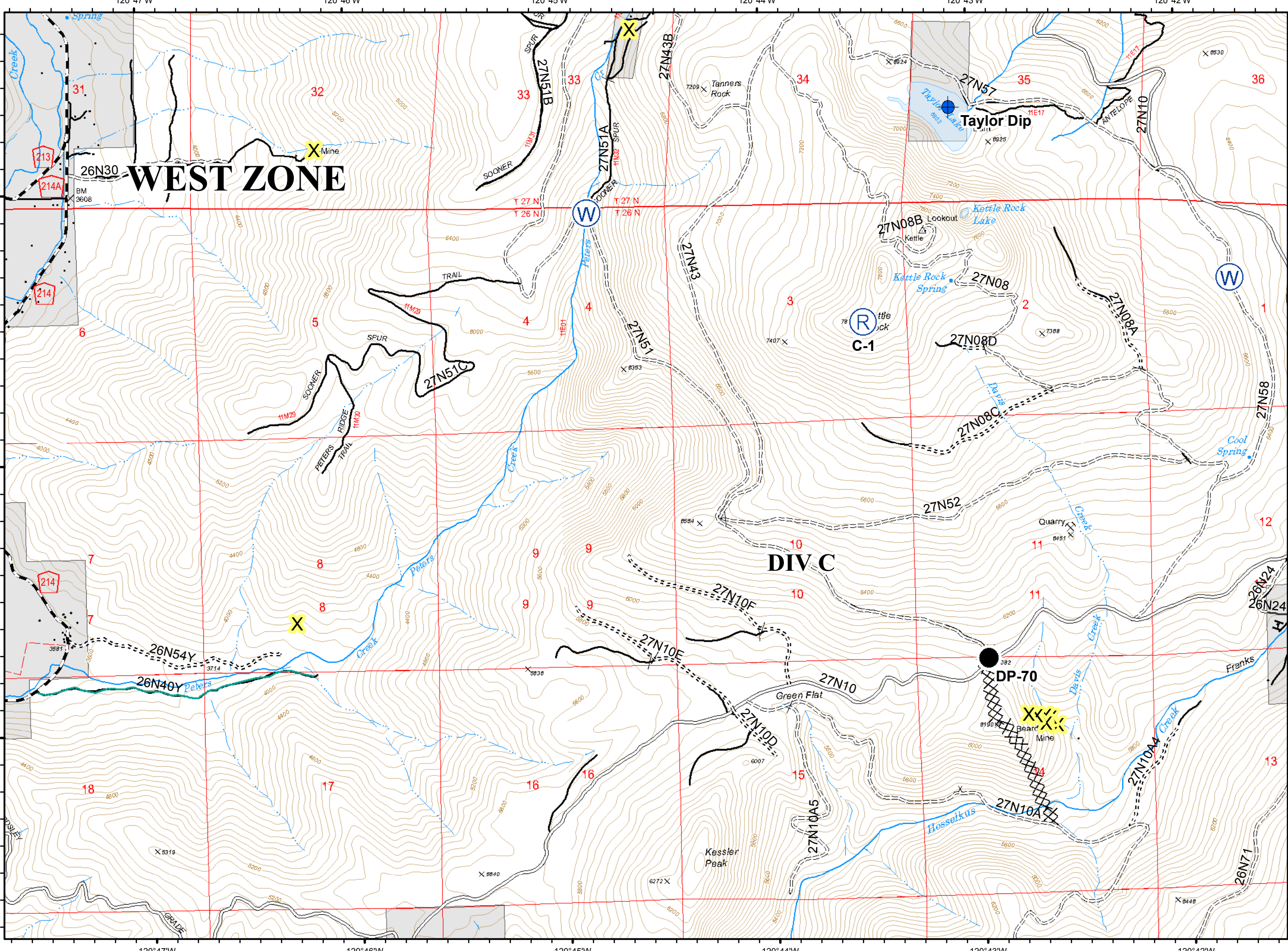
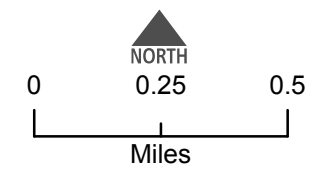
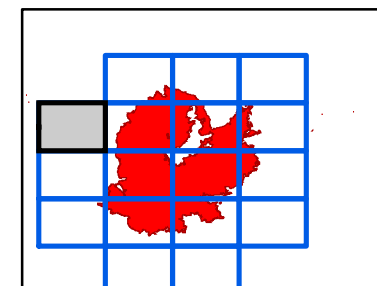


E4



- Dip Site
- Drop Point
- Repeater
- Water Source

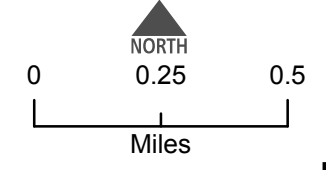
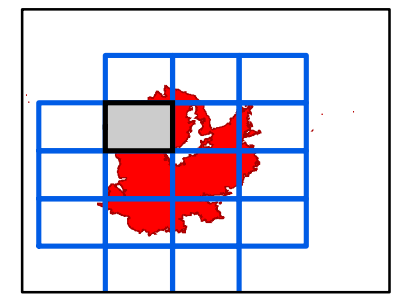
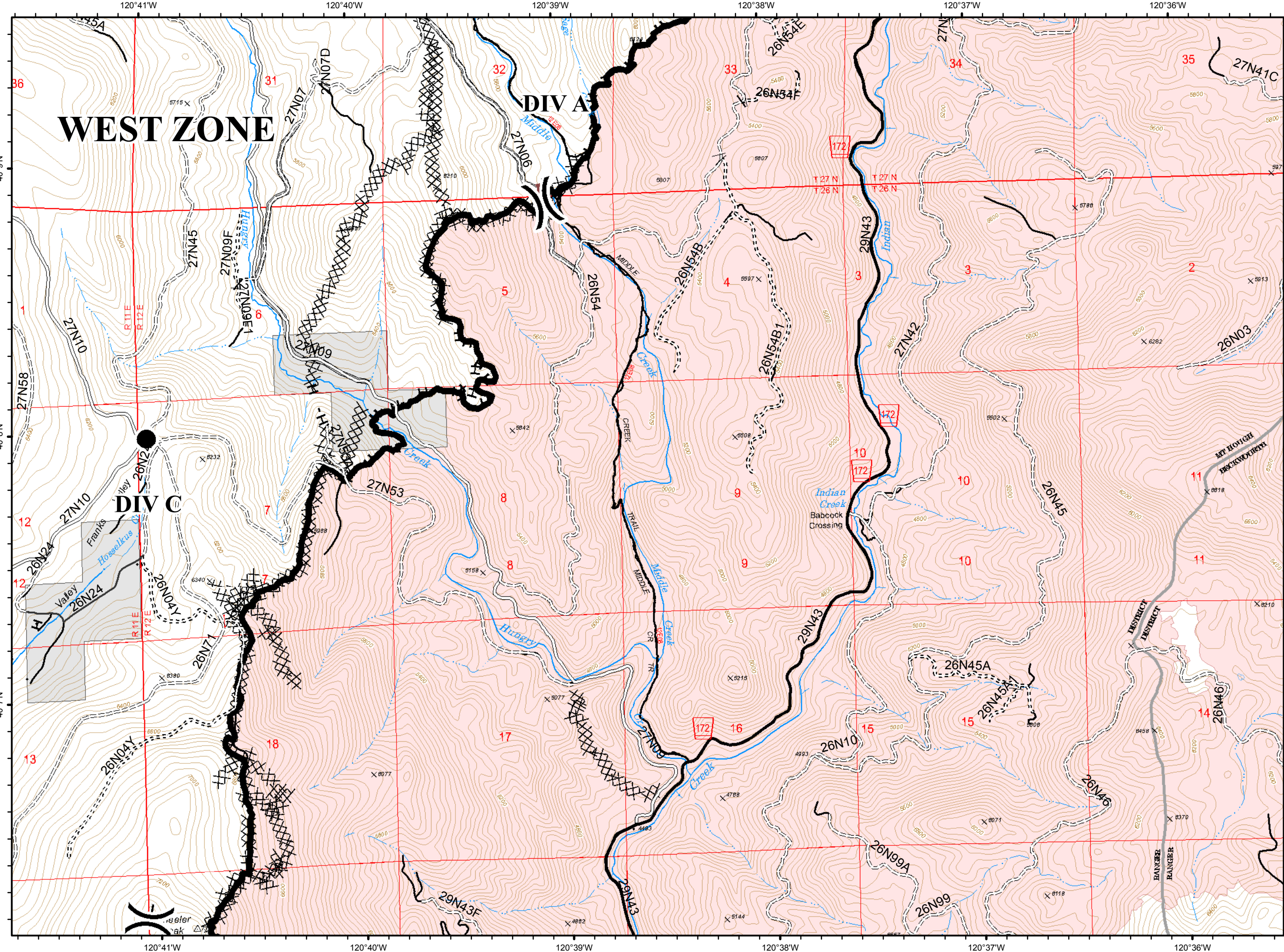
- Completed Dozer Line
- Completed Hand Line
- C - COUNTY, PARISH, BOROUGH
- NOT - NOT NEEDED
- P - PRIVATE
- <all other values>
- Basic Custodial Care (Closed)
- High Clearance Roads
- Suitable for Passenger Cars
- travelRoute
- Known Mine Hazards
- Abandoned Mine



E5



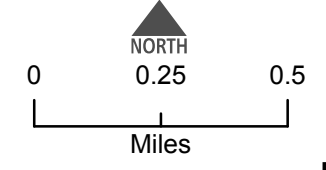
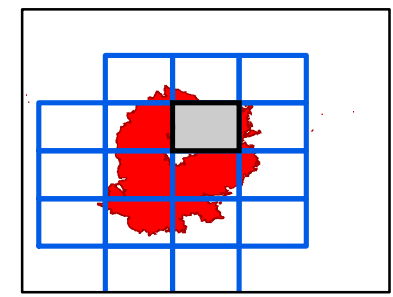
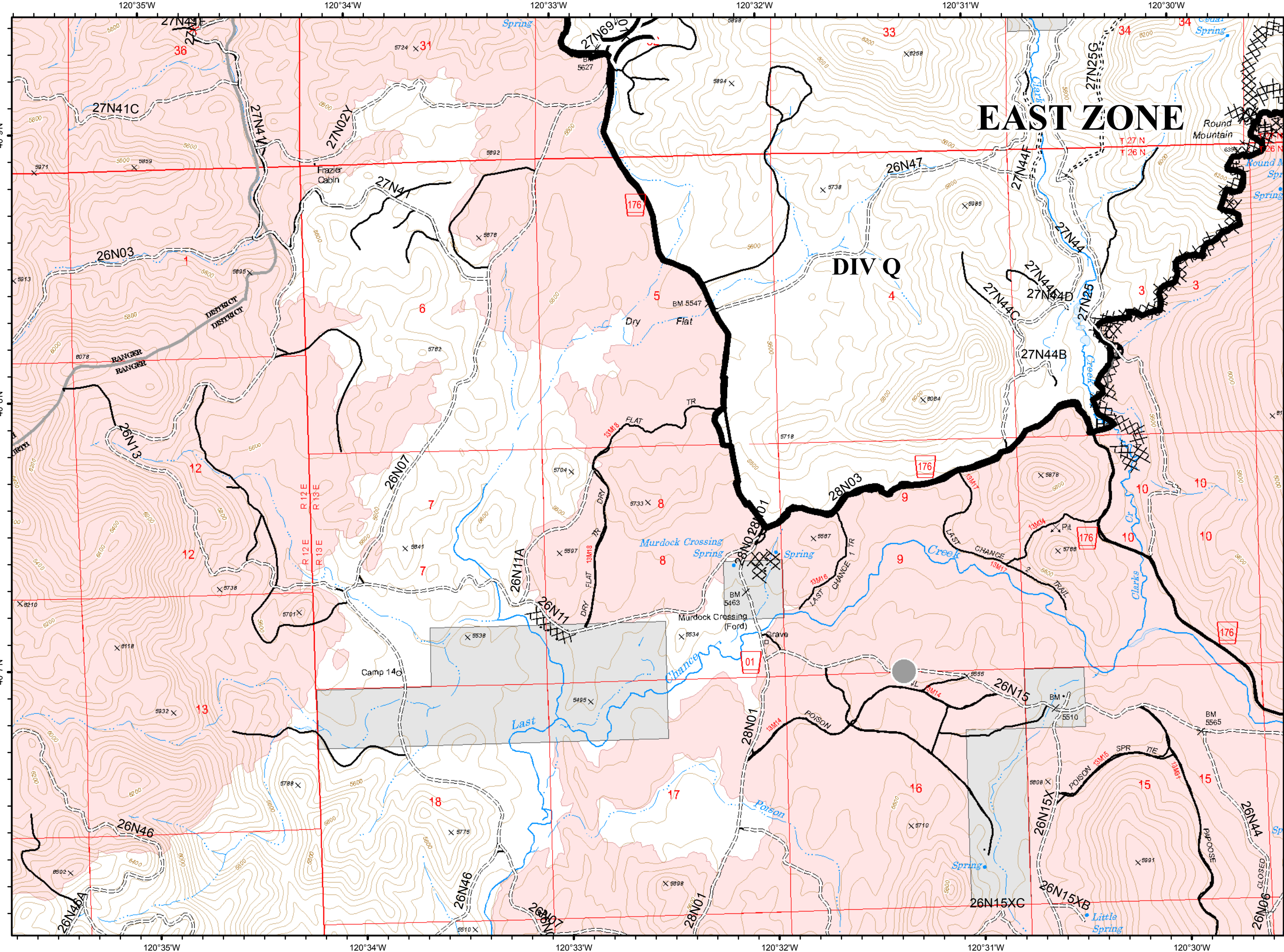
- Drop Point
- 📌 Dozer Push
- () Division Break
- Completed Line
- XXXX Completed Dozer Line
- H - Completed Hand Line
- Access or Improved Road
- ✕ Proposed Dozer Line
- P - PRIVATE
- Basic Custodial Care (Closed)
- ==== High Clearance Roads
- Suitable for Passenger Cars
- High Degree of Comfort
- travelRoute



E6



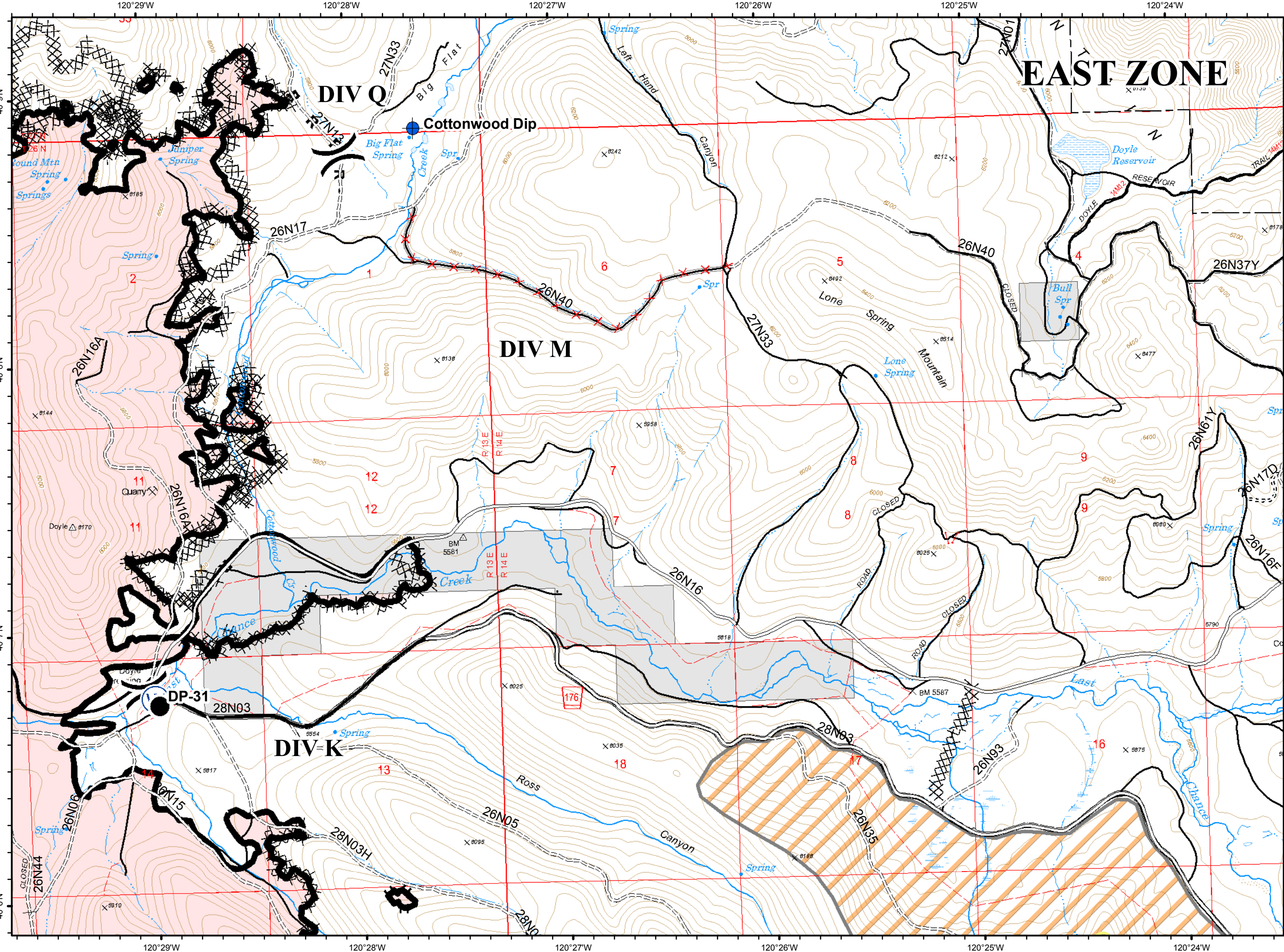
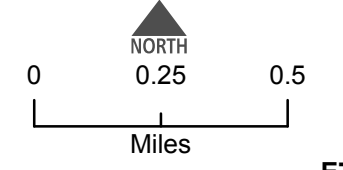
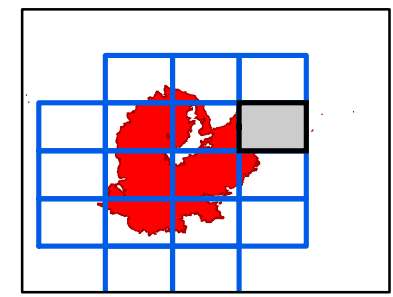
- Other
- ⌋ Division Break
- Completed Line
- ⊗ Completed Dozer Line
- H - Completed Hand Line
- ⊕ Other
- ⋯ Basic Custodial Care (Closed)
- ⋯ High Clearance Roads
- High Degree of Comfort
- ⊗ Undetermined Decommissioned
- travelRoute



E7











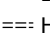

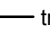





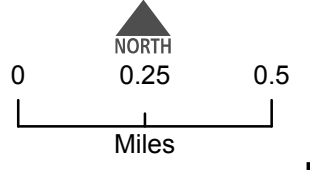
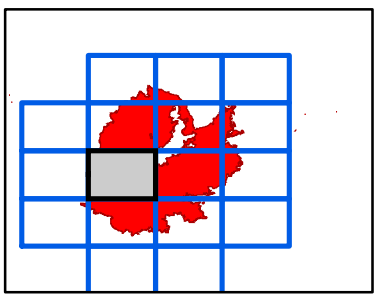
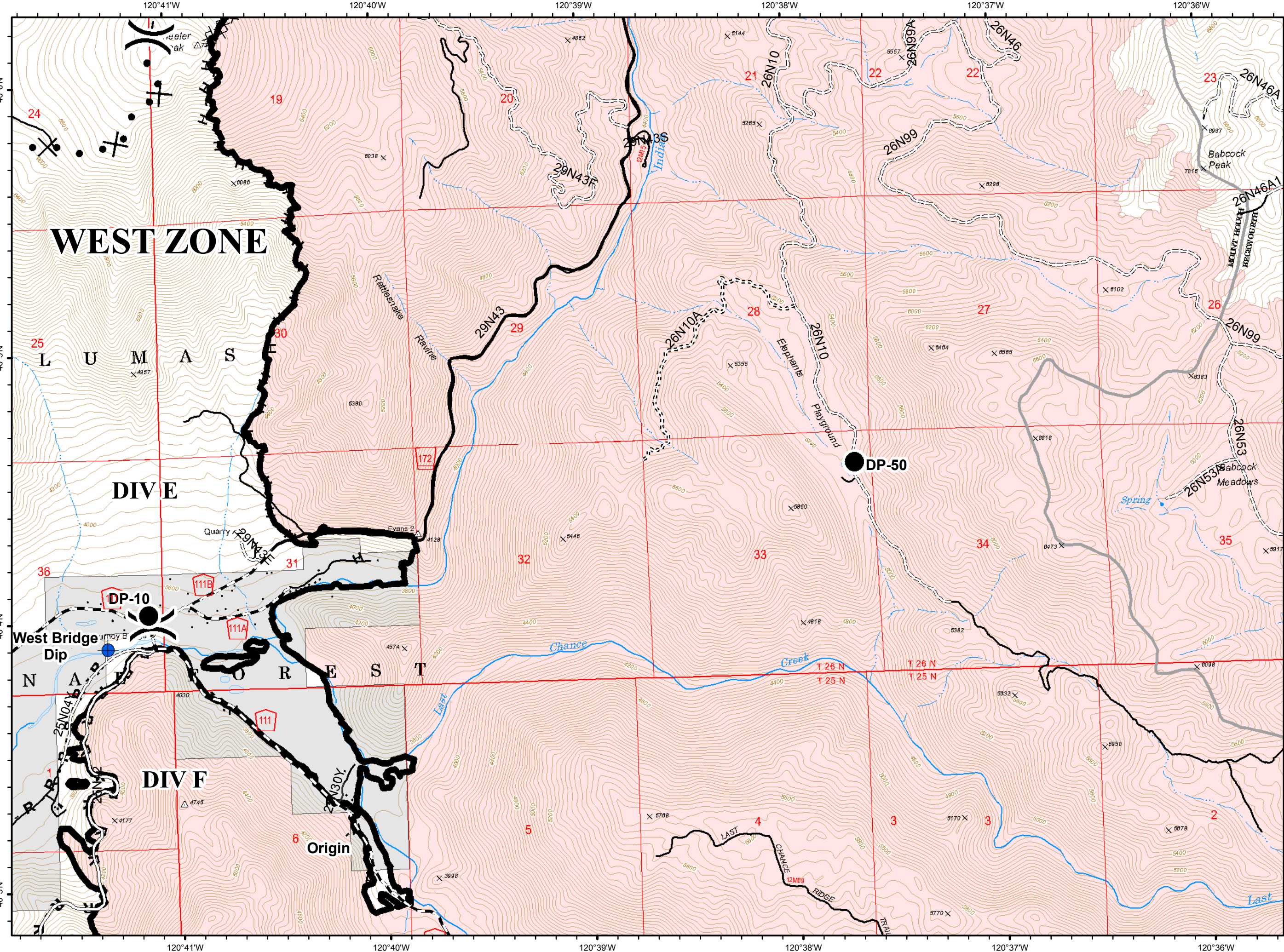
- Dip Site
- Drop Point
- Hazard
- Water Source
- Division Break
- Completed Line
- Completed Dozer Line
- Completed Hand Line
- Road as Completed Line
- Access or Improved Road
- Exclusion Zone
- Milford Roads
- NOT - NOT NEEDED
- Basic Custodial Care (Closed)
- High Clearance Roads
- Suitable for Passenger Cars
- High Degree of Comfort
- NFSR Decommissioned
- travelRoute



F5






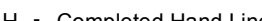


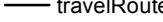


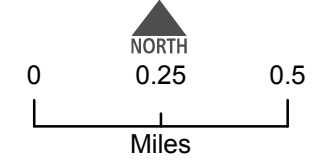
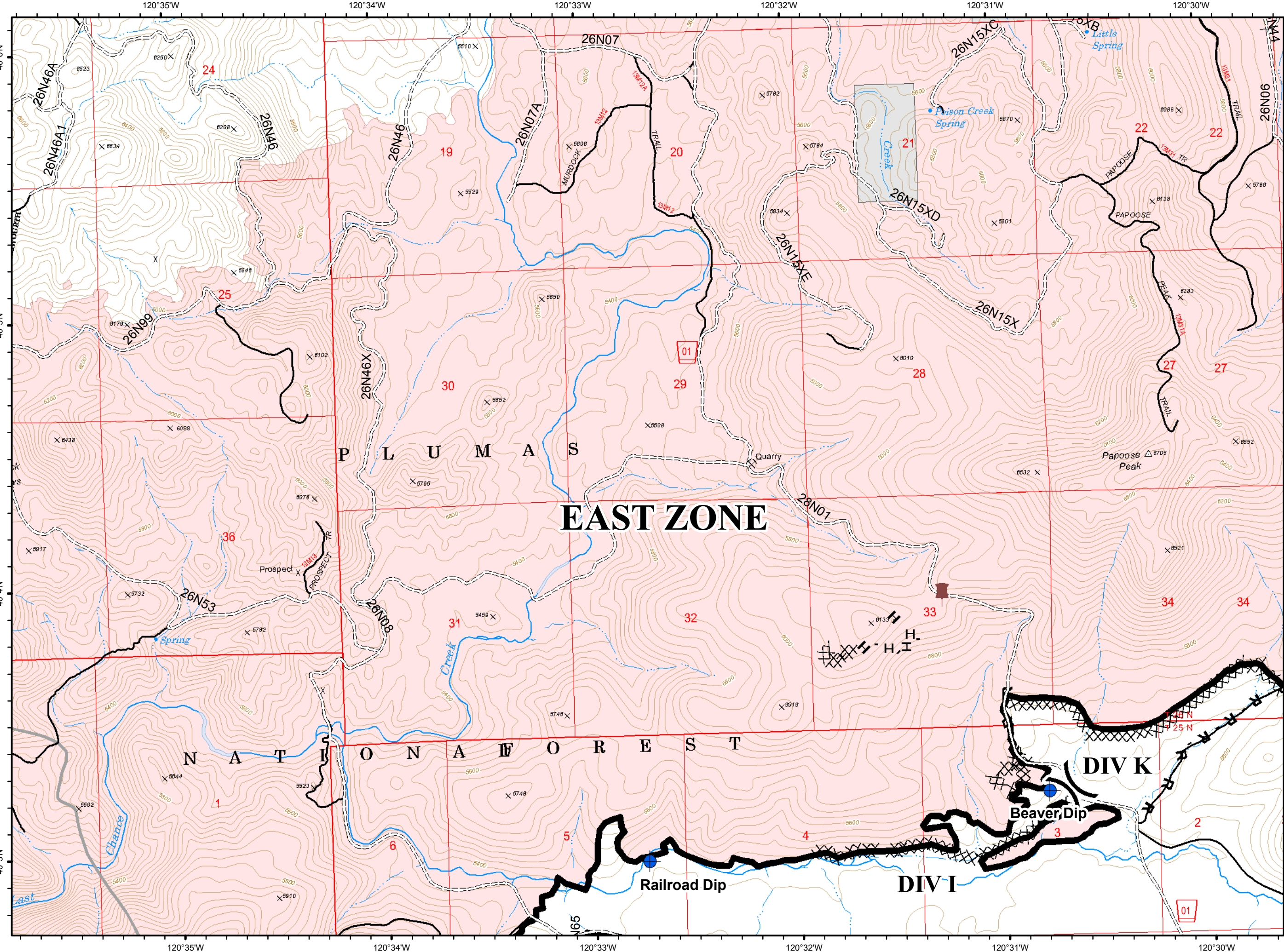
-  Dip Site
-  Drop Point
-  Division Break
-  Completed Line
-  Completed Dozer Line
-  Completed Hand Line
-  Road as Completed Line
-  Proposed Dozer Line
-  C - COUNTY, PARISH, BOROUGH
-  NOT - NOT NEEDED
-  P - PRIVATE
-  Basic Custodial Care (Closed)
-  High Clearance Roads
-  Suitable for Passenger Cars
-  High Degree of Comfort
-  travelRoute



F6



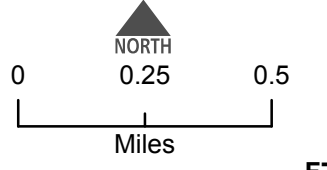
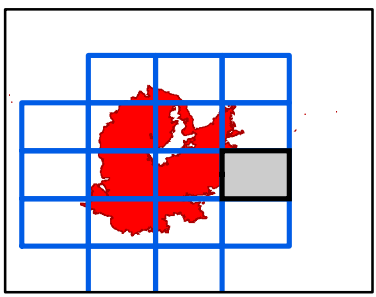
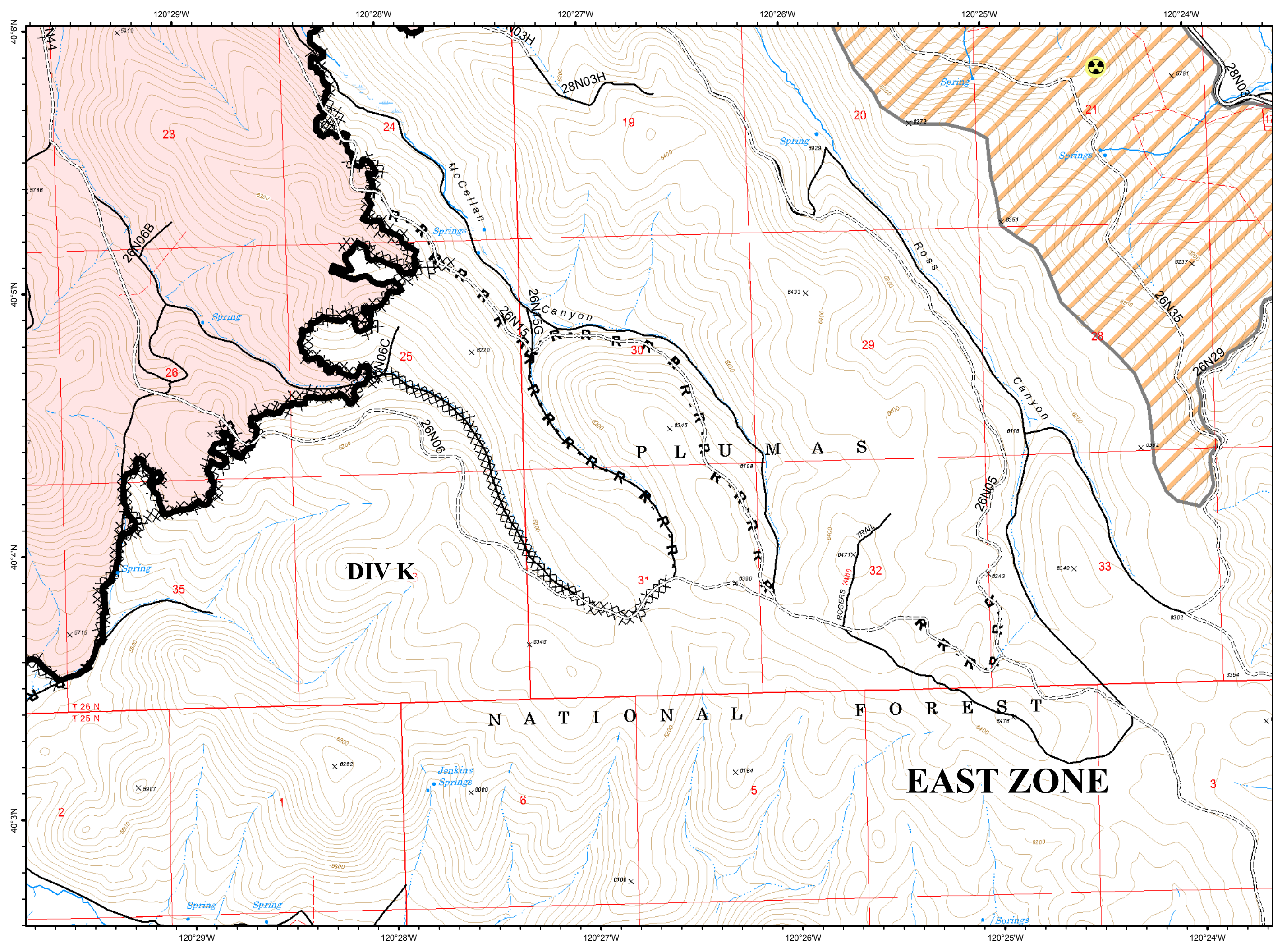
-  Dip Site
-  Dozer Push
-  Division Break
-  Completed Line
-  Completed Dozer Line
-  H - Completed Hand Line
-  R - Road as Completed Line
-  High Clearance Roads
-  travelRoute



F7



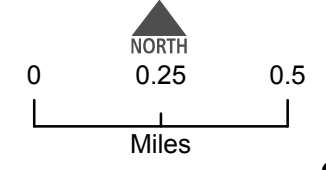
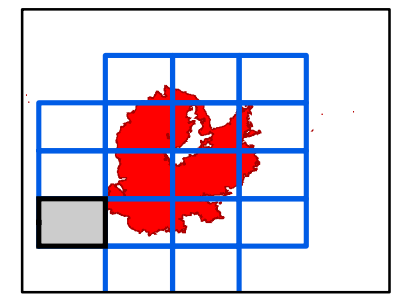
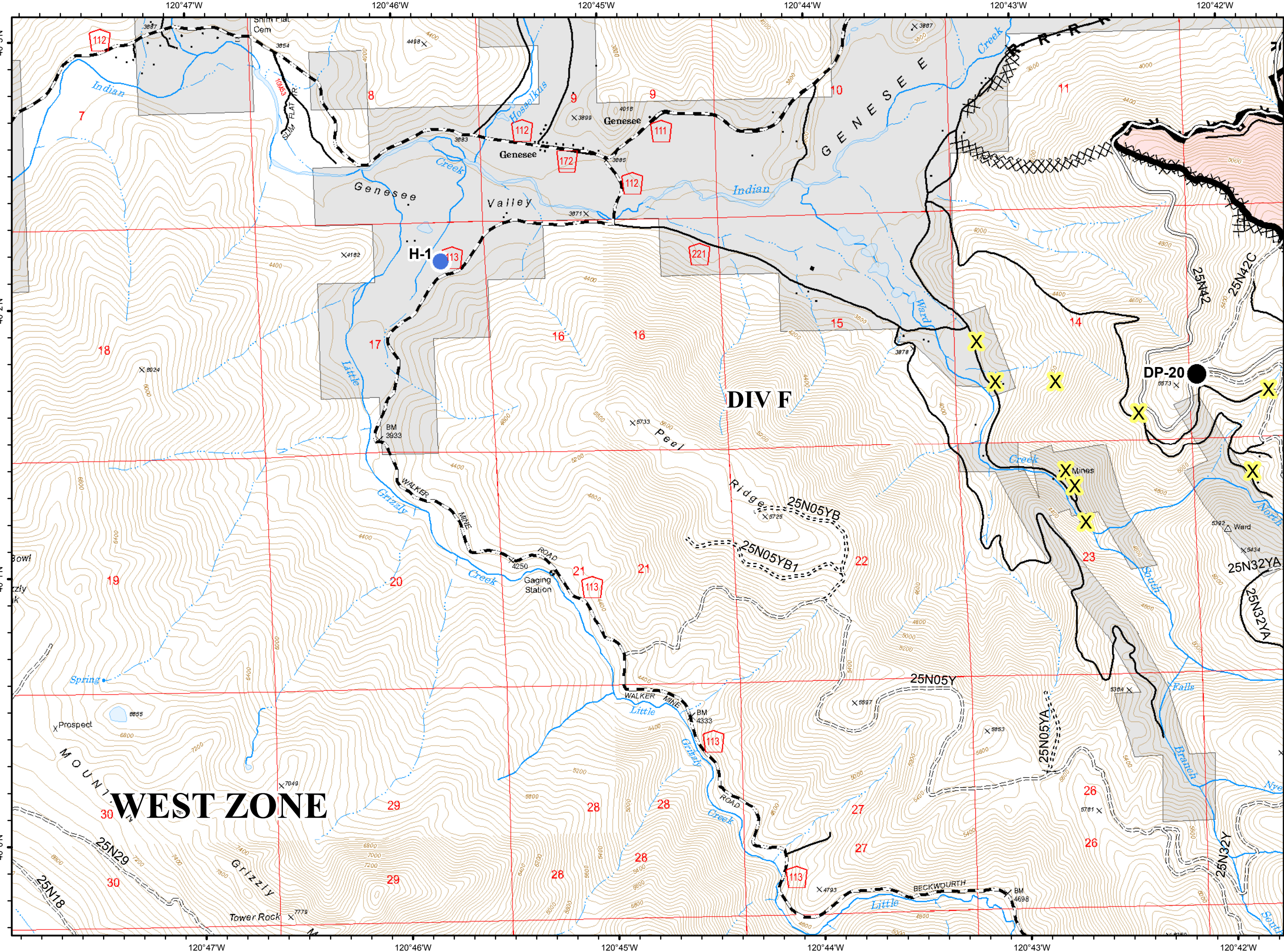
- Hazard
- Completed Line
- Completed Dozer Line
- H - Completed Hand Line
- R - Road as Completed Line
- Access or Improved Road
- Exclusion Zone
- NOT - NOT NEEDED
- High Clearance Roads
- Suitable for Passenger Cars
- travelRoute



G4



- Drop Point
- Helispot
- Completed Line
- XXXX Completed Dozer Line
- R - Road as Completed Line
- C - COUNTY, PARISH, BOROUGH
- NOT - NOT NEEDED
- ==== Basic Custodial Care (Closed)
- ==== High Clearance Roads
- Suitable for Passenger Cars
- travelRoute
- X Abandoned Mine



120°41'W 120°40'W 120°39'W 120°38'W 120°37'W 120°36'W

IAP Map

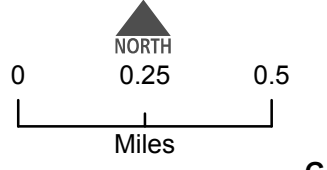
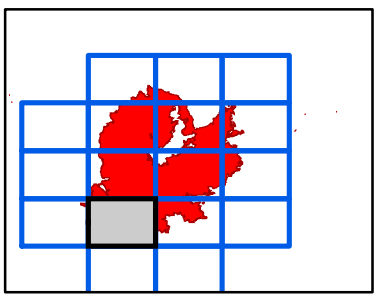
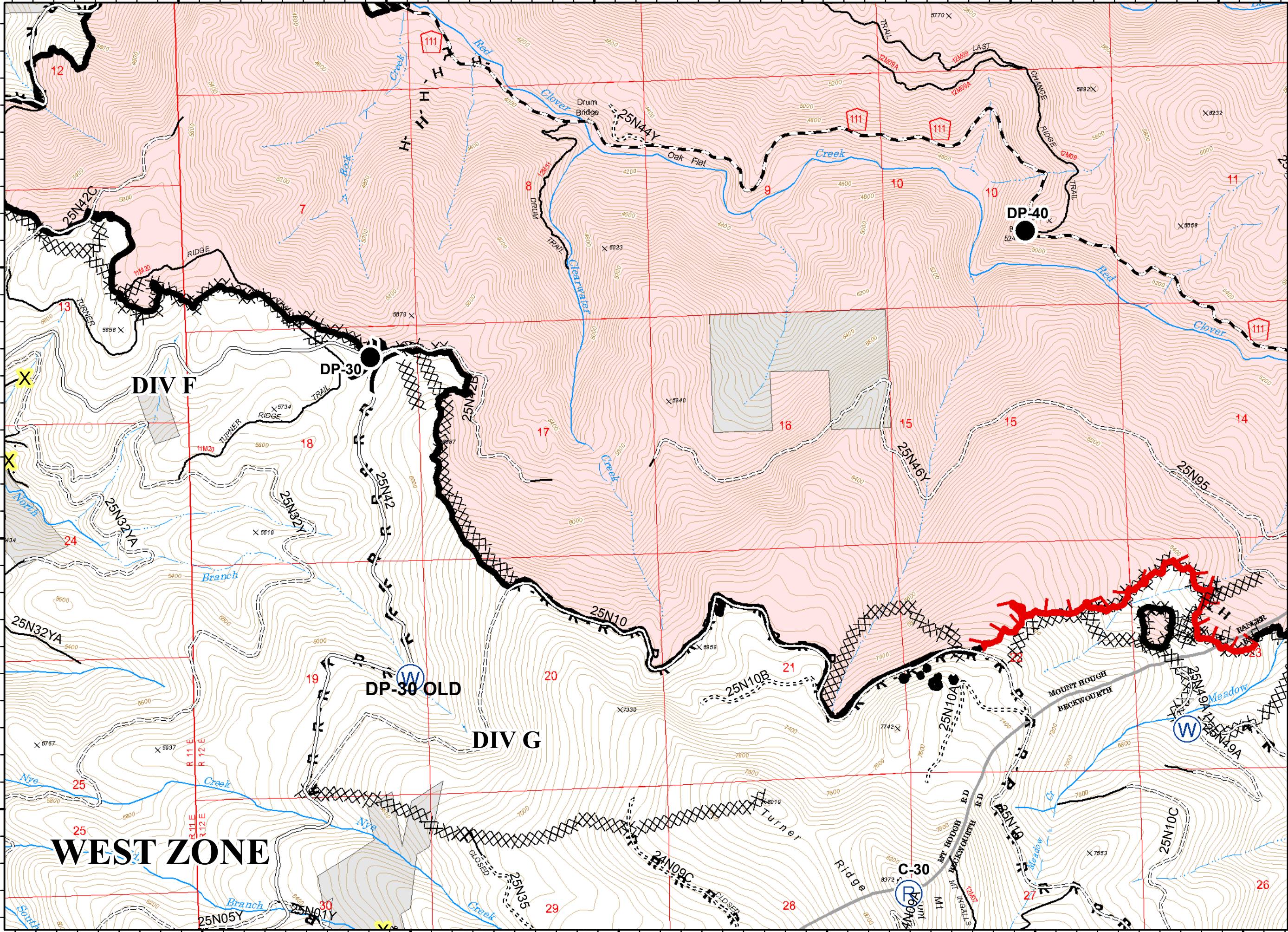
Walker
CA-PNF-001324
September 23, 2019

G5

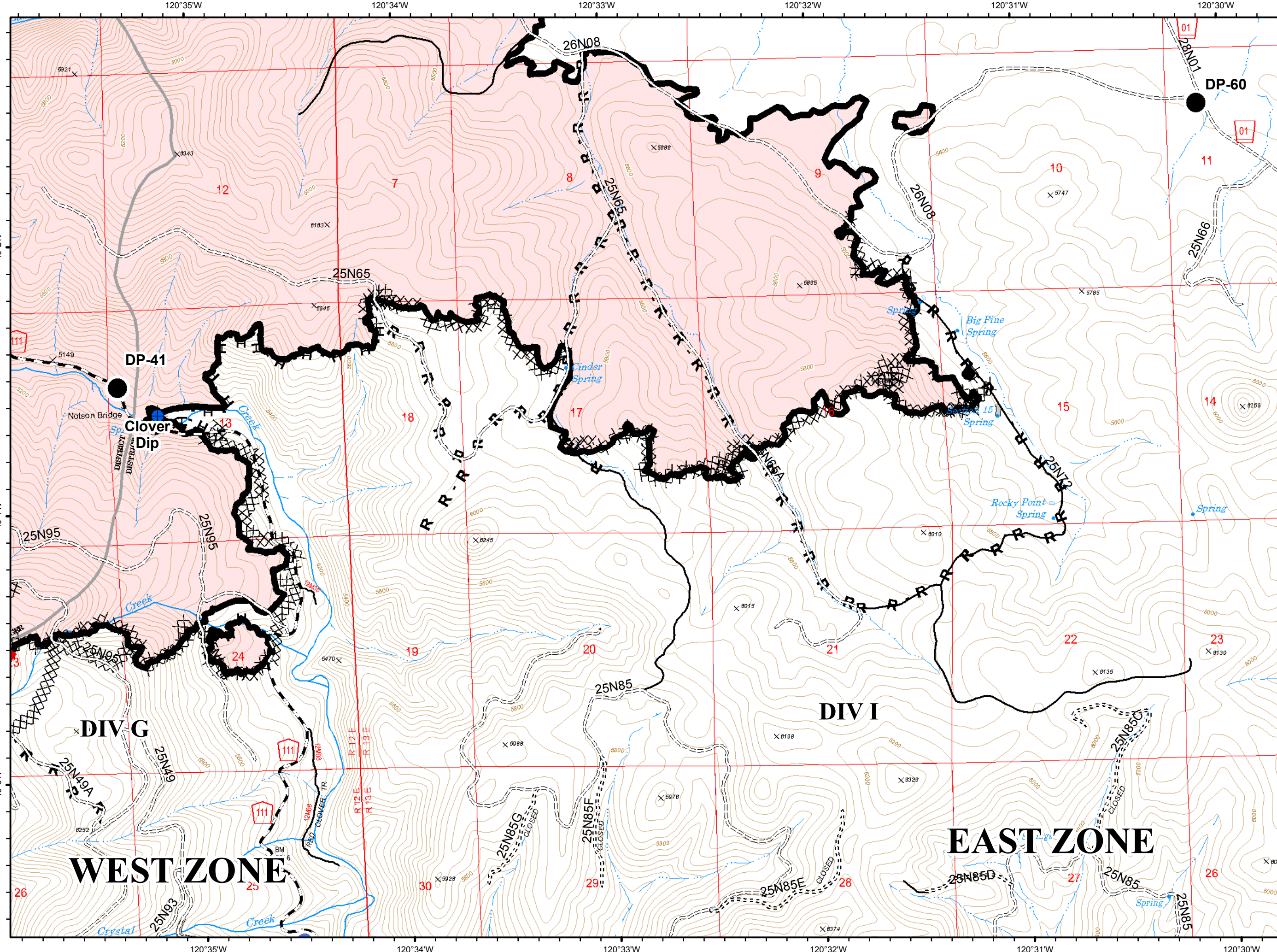


- Drop Point
- Ⓡ Repeater
- Ⓦ Water Source
- ⌋ Division Break

- ▬ Uncontrolled Fire Edge
- ▬ Completed Line
- ▬ Completed Dozer Line
- H - Completed Hand Line
- R - Road as Completed Line
- ▬ Access or Improved Road
- ▬ C - COUNTY, PARISH, BOROUGH
- ▬ NOT - NOT NEEDED
- ▬ Basic Custodial Care (Closed)
- ▬ High Clearance Roads
- ▬ Suitable for Passenger Cars
- ▬ travelRoute
- X Abandoned Mine



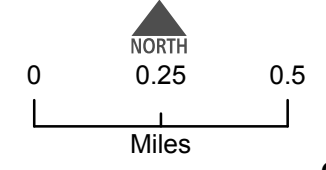
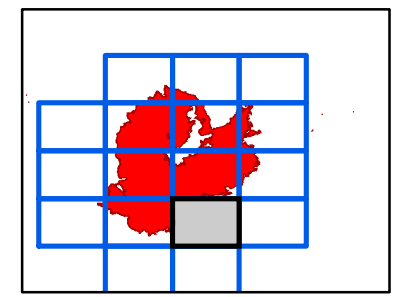
G5

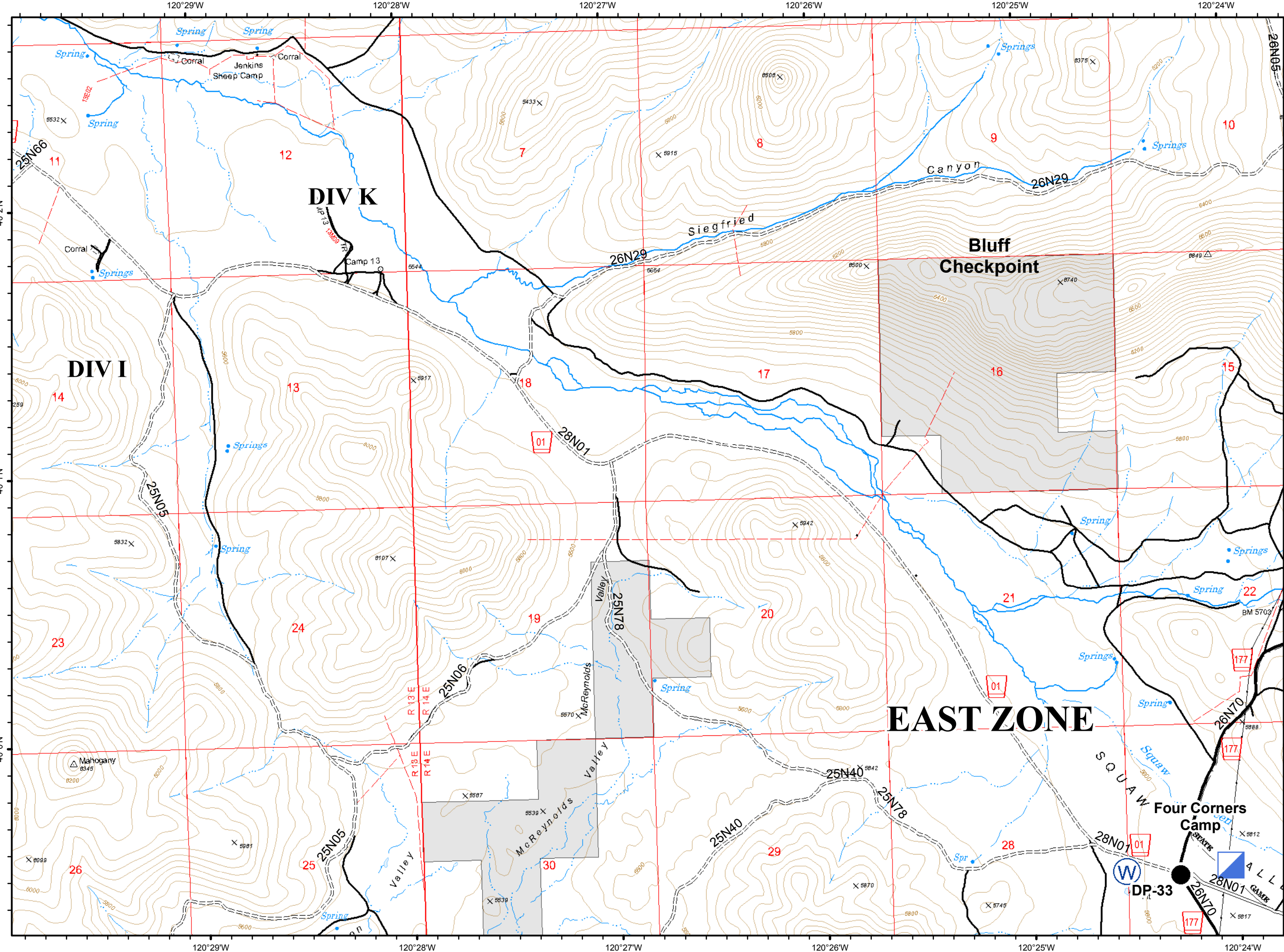


G6






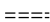



- Dip Site
- Drop Point
- Helispot
- Uncontrolled Fire Edge
- Completed Line
- Completed Dozer Line
- Completed Hand Line
- Road as Completed Line
- Access or Improved Road
- C - COUNTY, PARISH, BOROUGH
- Basic Custodial Care (Closed)
- High Clearance Roads
- Undetermined, Unknown and Other
- travelRoute

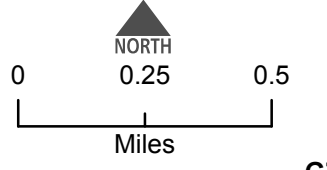
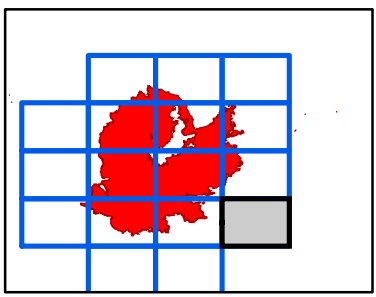




G7



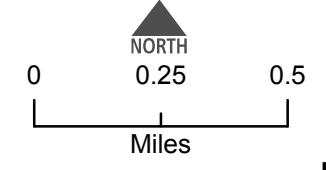
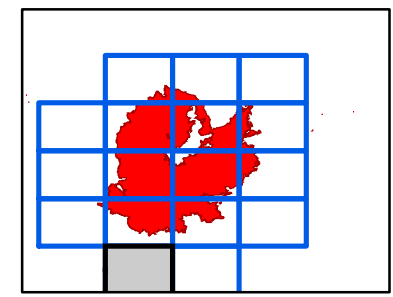
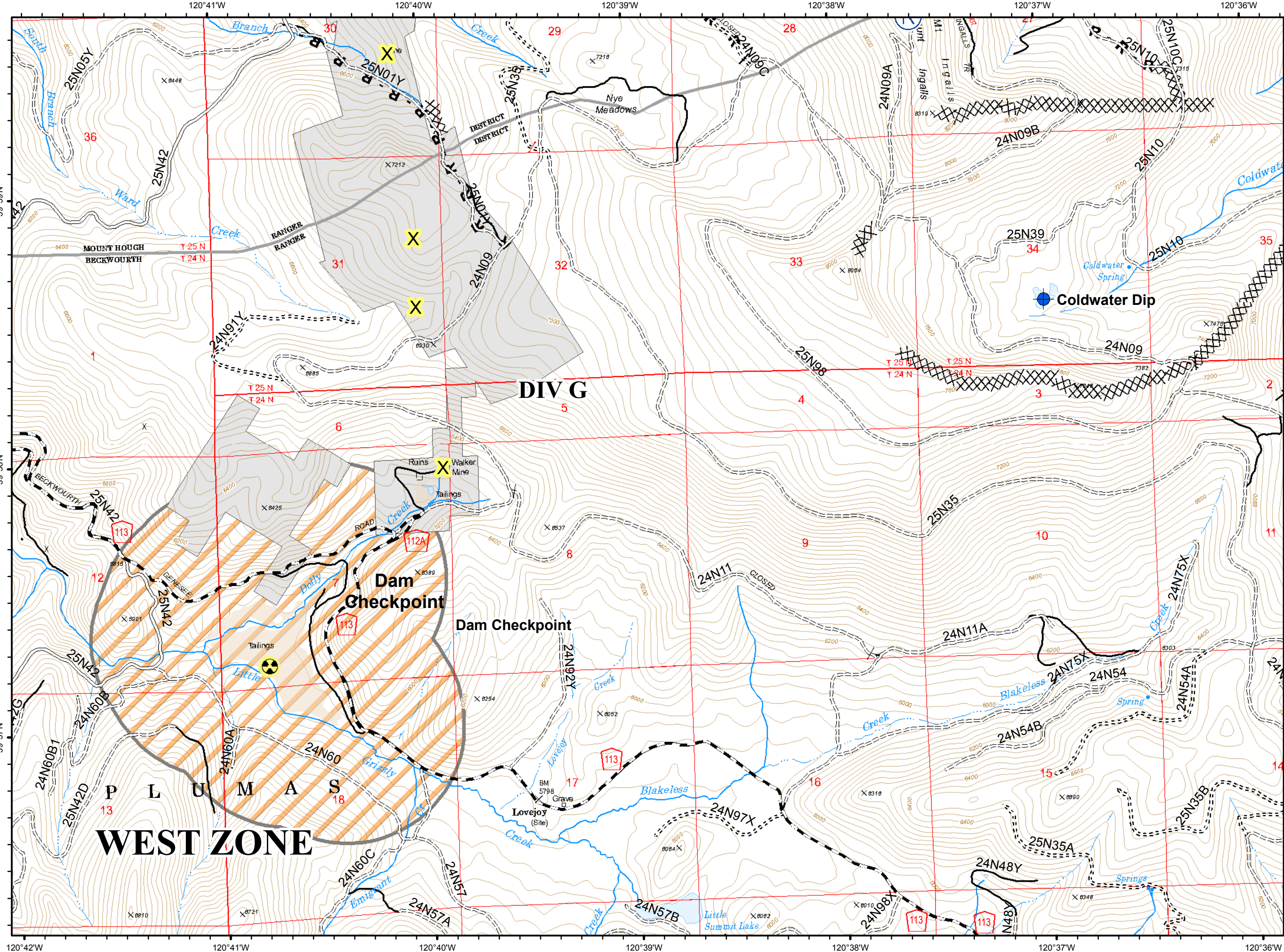
-  Drop Point
-  Incident Command Post
-  Water Source
-  High Clearance Roads
-  Suitable for Passenger Cars
-  High Degree of Comfort
-  travelRoute



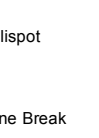
H5



- Dip Site
- Hazard
- Repeater
- Completed Dozer Line
- R - Road as Completed Line
- Exclusion Zone
- C - COUNTY, PARISH, BOROUGH
- NOT - NOT NEEDED
- Basic Custodial Care (Closed)
- High Clearance Roads
- Suitable for Passenger Cars
- travelRoute
- Abandoned Mine



H6



- Completed Dozer Line
- Completed Hand Line
- Access or Improved Road
- C - COUNTY, PARISH, BOROUGH
- NOT - NOT NEEDED
- Basic Custodial Care (Closed)
- High Clearance Roads
- Suitable for Passenger Cars
- High Degree of Comfort
- travelRoute

