

**IAP Tile Index**

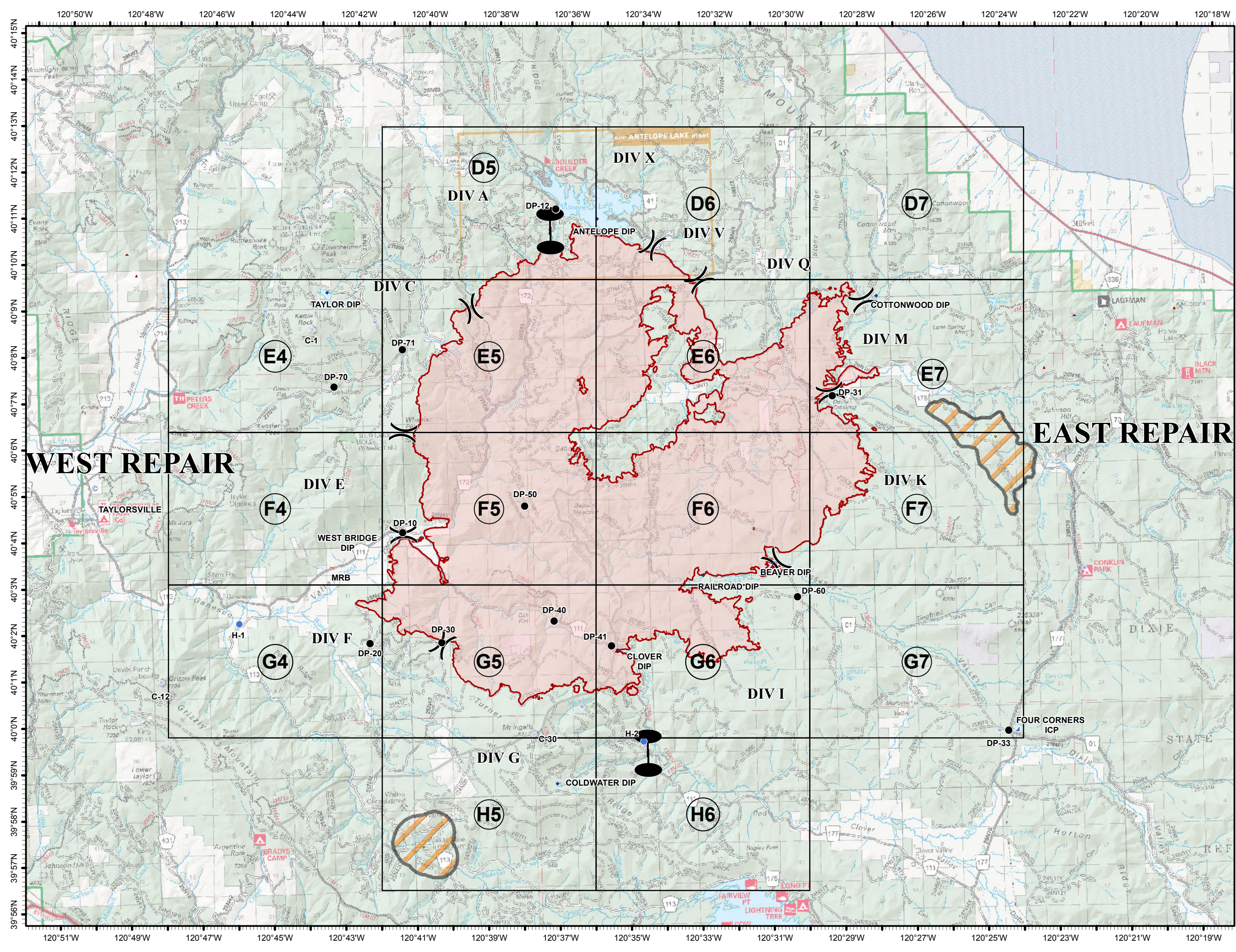
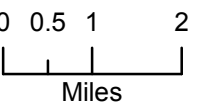
Walker Fire  
CA-PNF-001324  
September 23, 2019



- Camp
- Dip Site
- Drop Point
- Dozer Push
- Hazard
- Helispot
- Incident Command Post
- Repeater
- Retardant/Mud Pit
- Water Source
- Other
- Zone Break
- Division Break
- Wildfire Daily Fire Perimeter



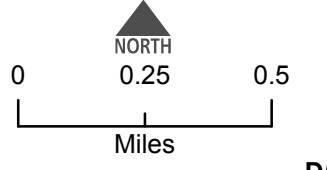
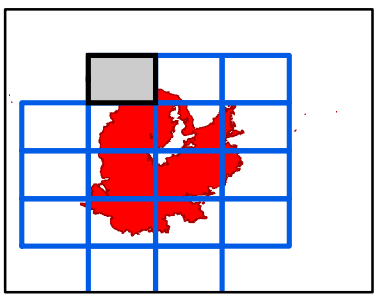
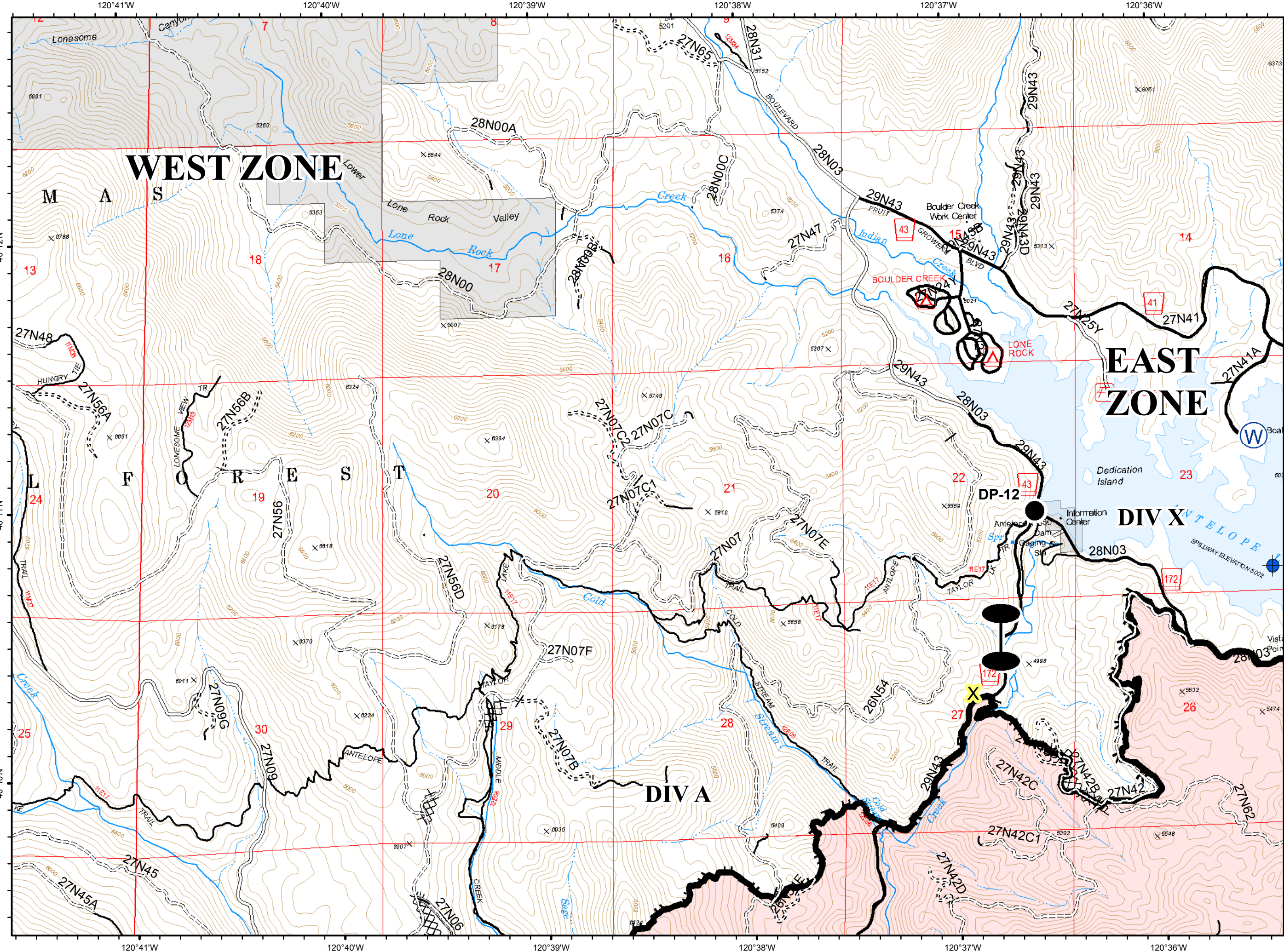
Mobile Maps



**D5**



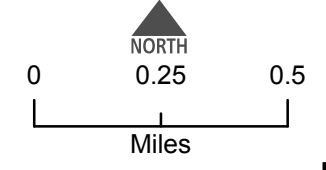
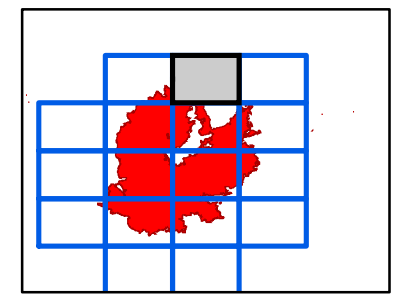
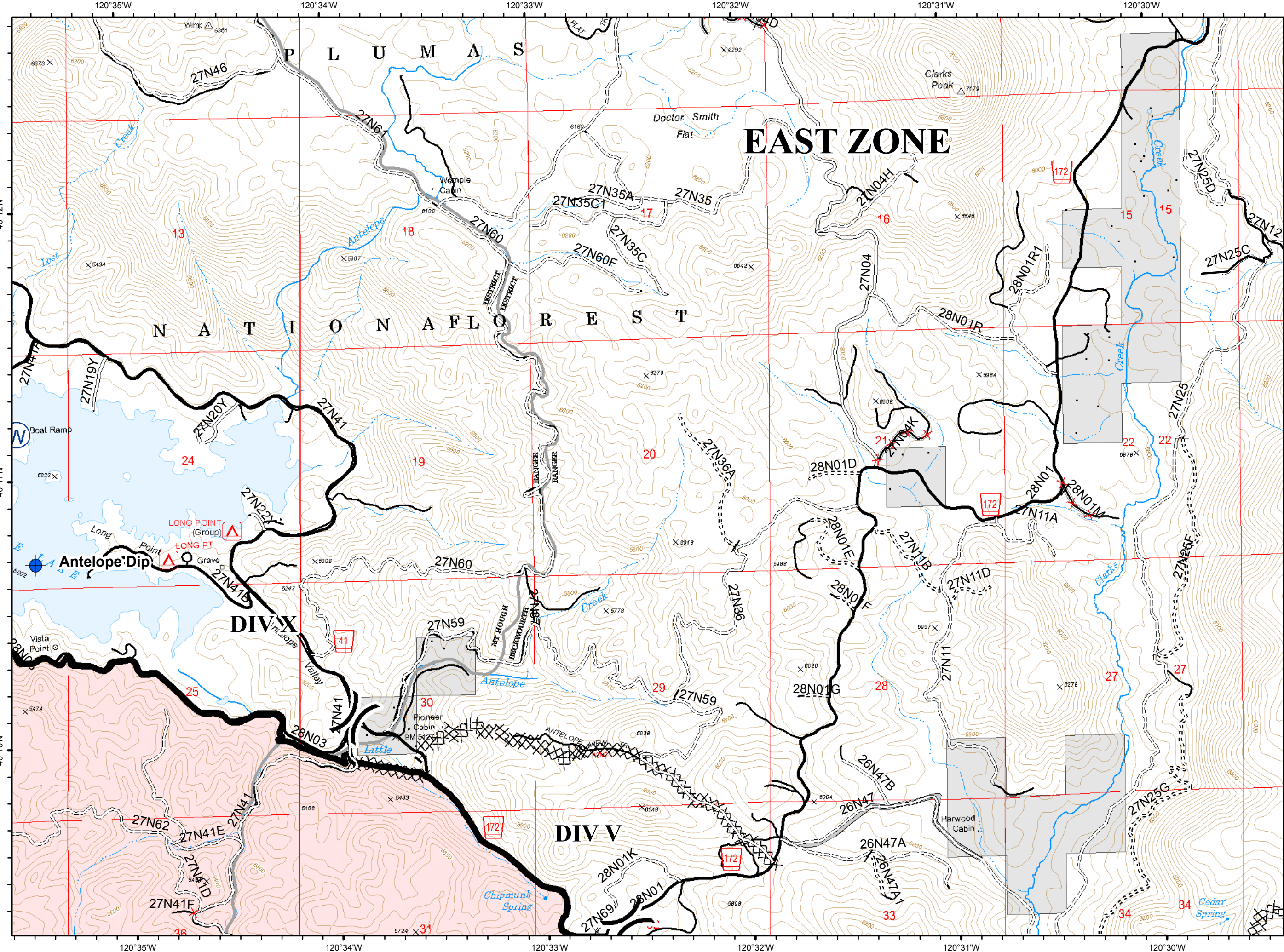
- Dip Site
- Drop Point
- Water Source
- Zone Break
- Completed Line
- Completed Dozer Line
- H - Completed Hand Line
- R - Road as Completed Line
- Access or Improved Road
- Basic Custodial Care (Closed)
- High Clearance Roads
- Suitable for Passenger Cars
- High Degree of Comfort travelRoute
- X Known Mine Hazards



D6



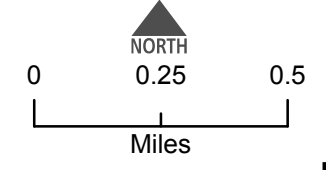
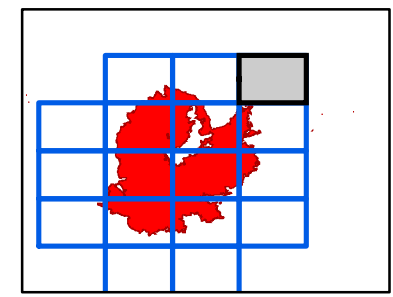
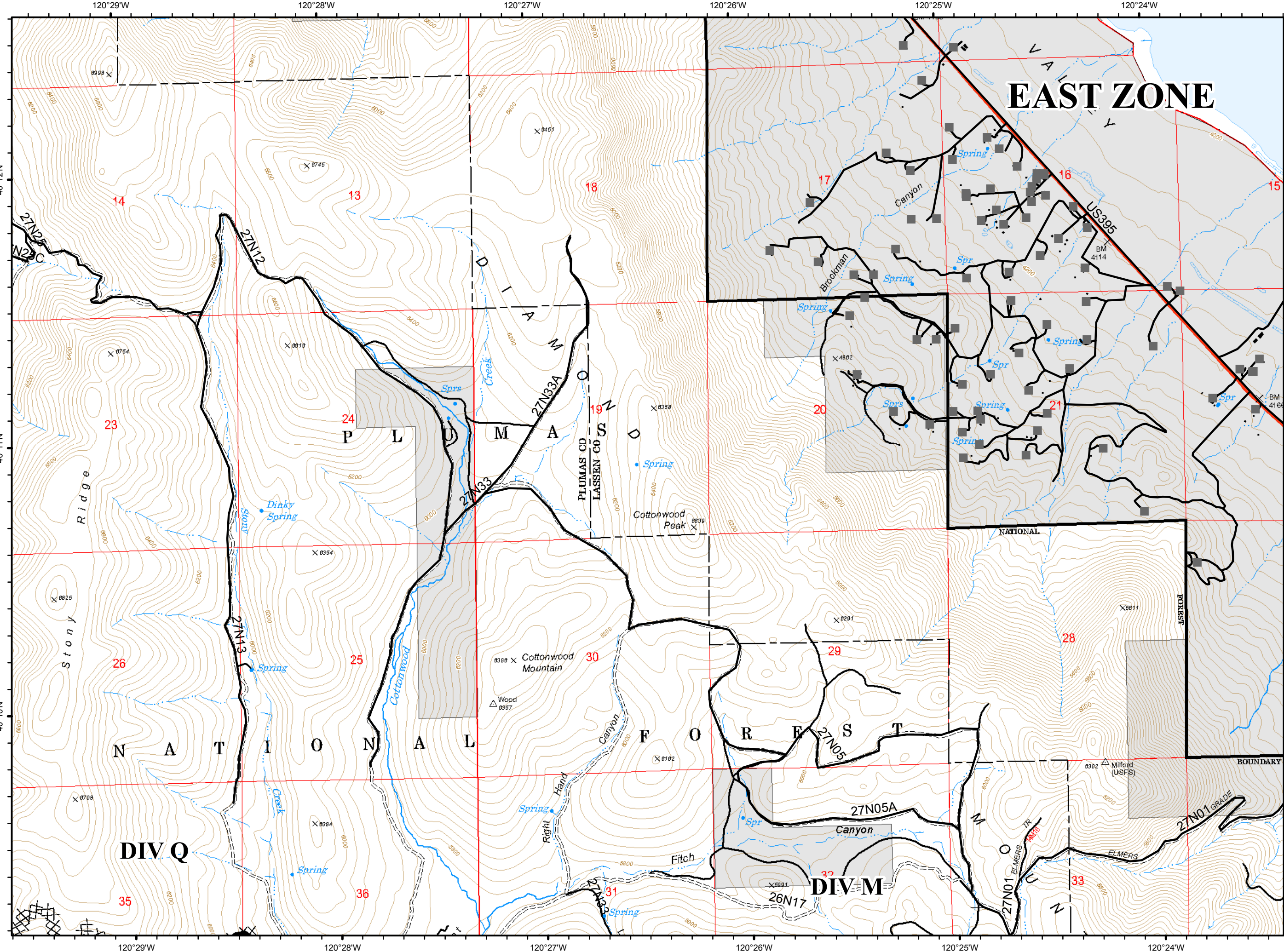
- Dip Site
- Water Source
- Division Break
- Completed Line
- Completed Dozer Line
- Completed Hand Line
- Access or Improved Road
- Milford Roads
- Basic Custodial Care (Closed)
- High Clearance Roads
- Suitable for Passenger Cars
- High Degree of Comfort
- NFSR Decommissioned
- Undetermined Decommissioned
- travelRoute



D7



- Completed Line
- Completed Dozer Line
- Milford Roads
- NOT - NOT NEEDED
- US - US HIGHWAY OR ROUTE
- High Clearance Roads
- travelRoute
- Milford Habitable Structures

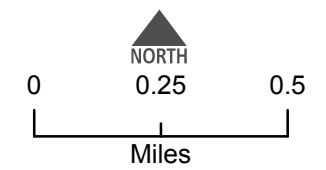
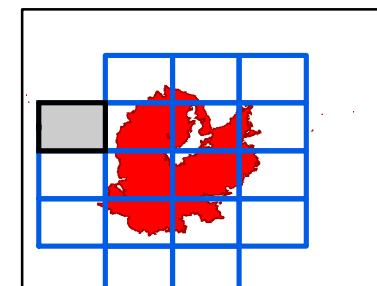
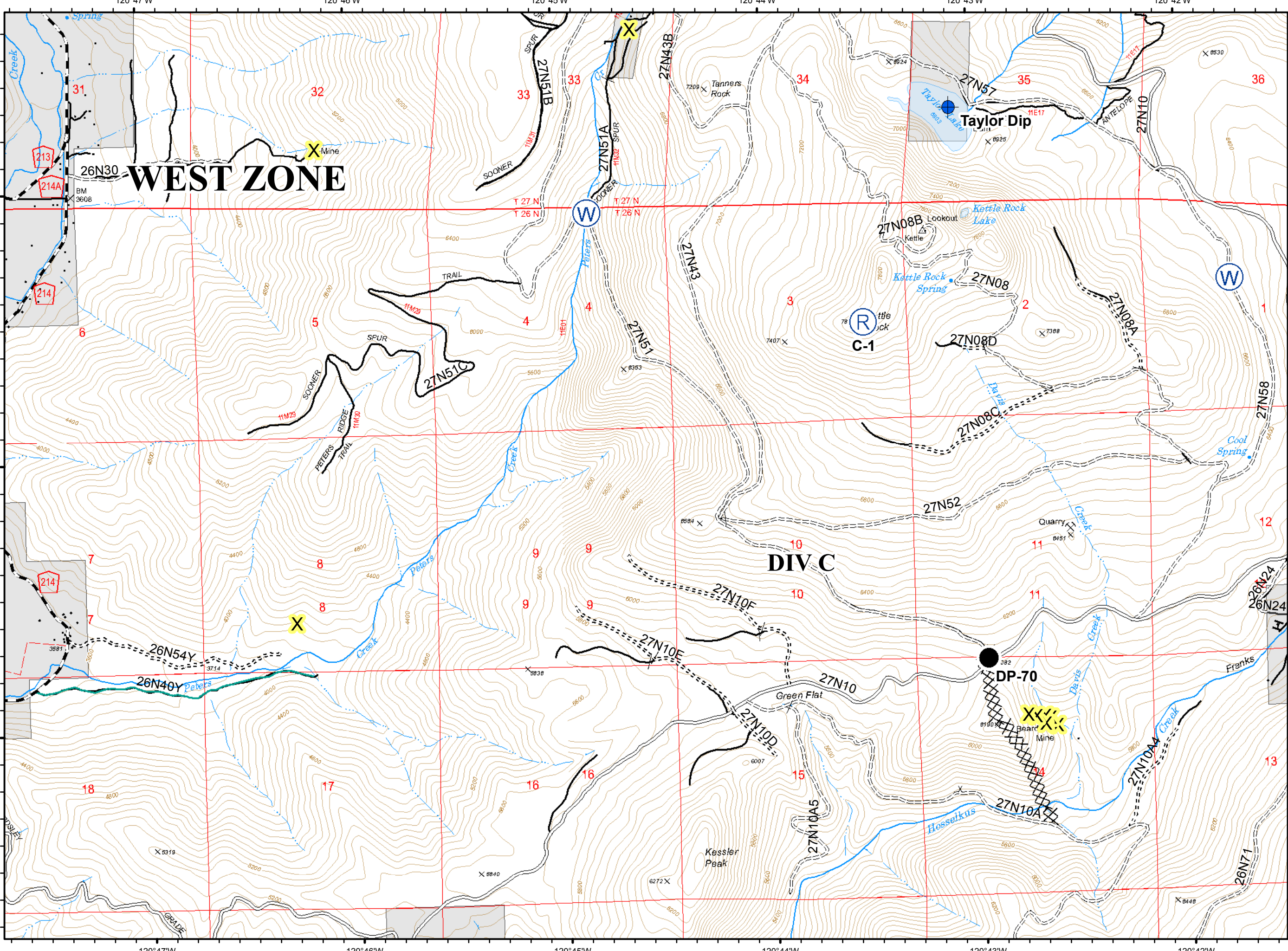


**E4**













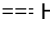

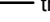

- Dip Site
- Drop Point
- Repeater
- Water Source

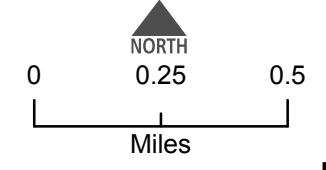
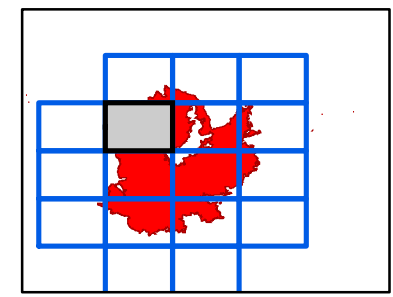
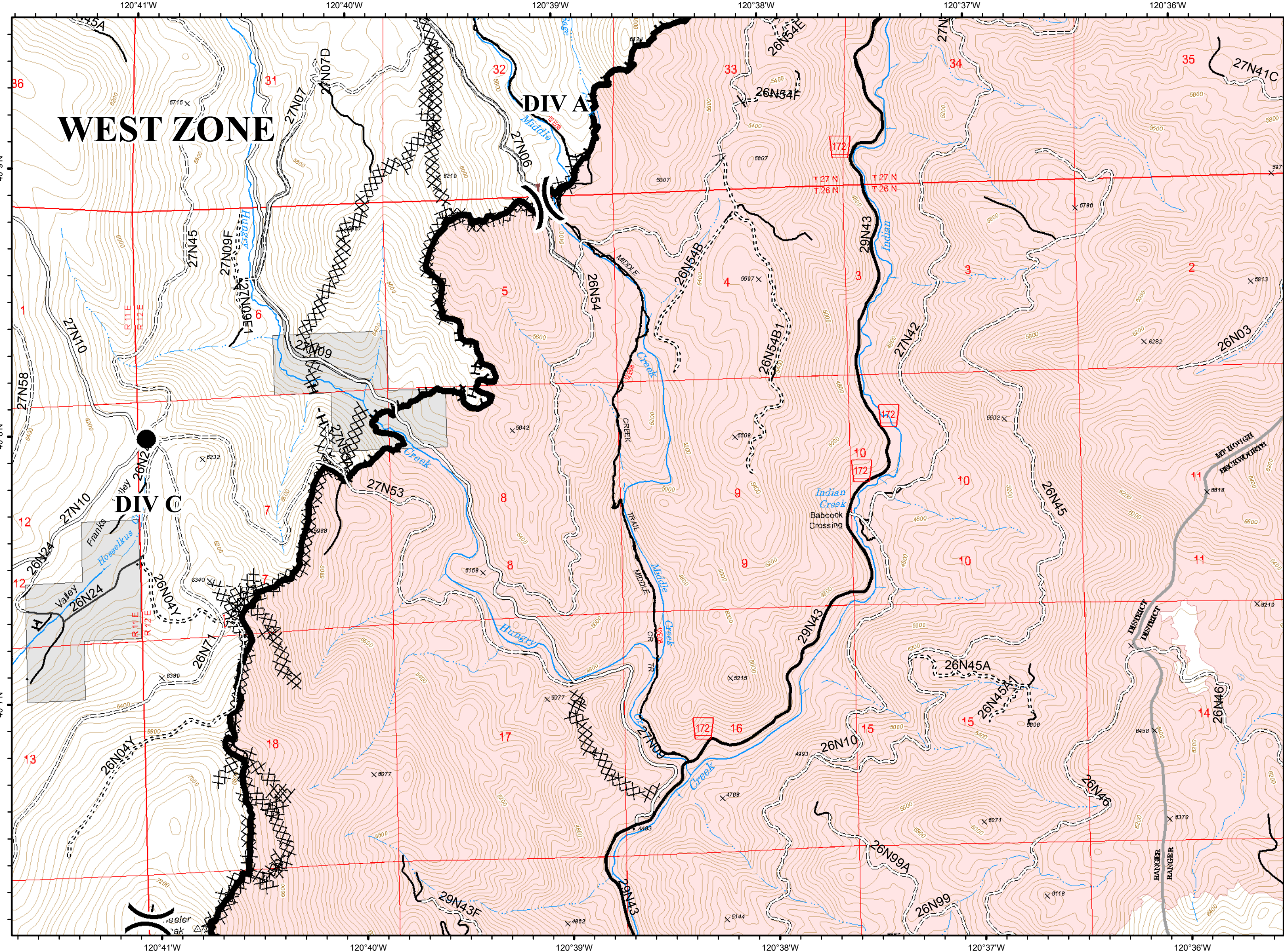
- Completed Dozer Line
- Completed Hand Line
- C - COUNTY, PARISH, BOROUGH
- NOT - NOT NEEDED
- P - PRIVATE
- <all other values>
- Basic Custodial Care (Closed)
- High Clearance Roads
- Suitable for Passenger Cars
- travelRoute
- Known Mine Hazards
- Abandoned Mine



**E5**



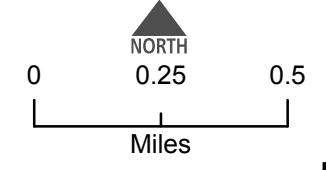
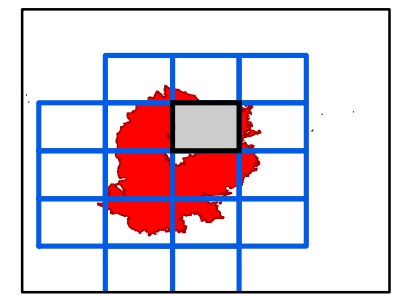
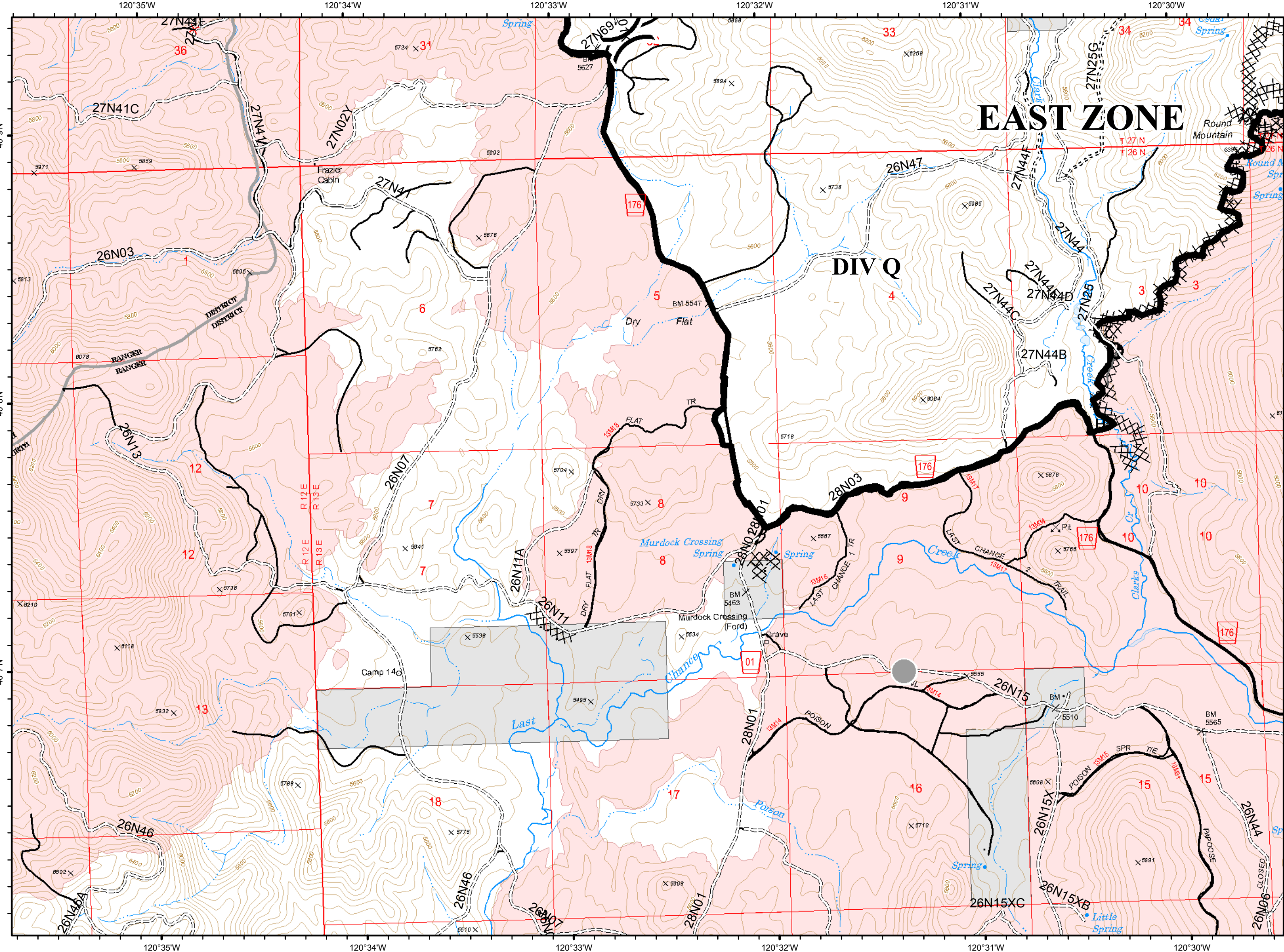
-  Drop Point
-  Dozer Push
-  Division Break
-  Completed Line
-  Completed Dozer Line
-  Completed Hand Line
-  Access or Improved Road
-  Proposed Dozer Line
-  P - PRIVATE
-  Basic Custodial Care (Closed)
-  High Clearance Roads
-  Suitable for Passenger Cars
-  High Degree of Comfort
-  travelRoute



E6



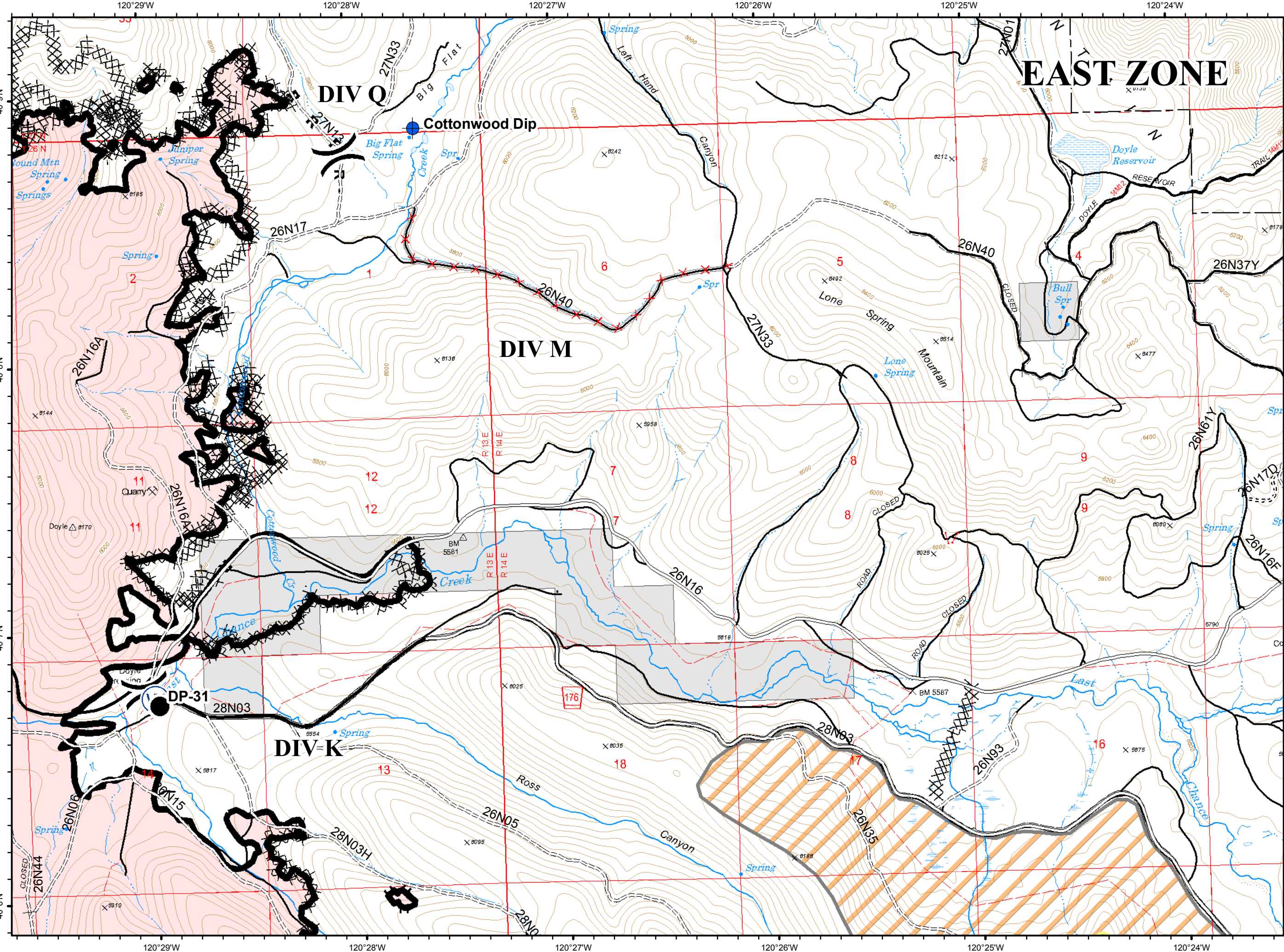
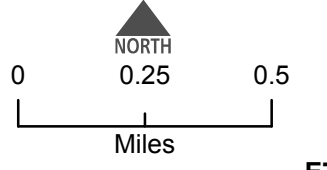
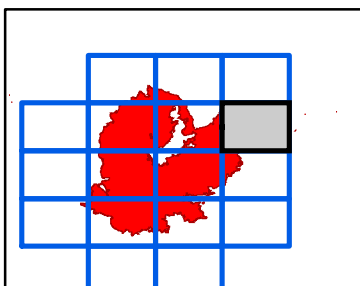
- Other
- ⌋ Division Break
- Completed Line
- ⊗ Completed Dozer Line
- H - Completed Hand Line
- ⊕ Other
- ⋯ Basic Custodial Care (Closed)
- ⋯ High Clearance Roads
- High Degree of Comfort
- ⊗ Undetermined Decommissioned
- travelRoute



**E7**



- Dip Site
- Drop Point
- Hazard
- Water Source
- Division Break
- Completed Line
- Completed Dozer Line
- Completed Hand Line
- Road as Completed Line
- Access or Improved Road
- Exclusion Zone
- Milford Roads
- NOT - NOT NEEDED
- Basic Custodial Care (Closed)
- High Clearance Roads
- Suitable for Passenger Cars
- High Degree of Comfort
- NFSR Decommissioned
- travelRoute











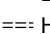

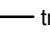





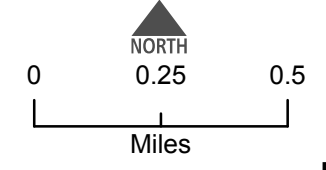
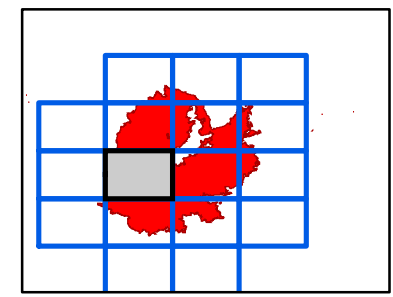
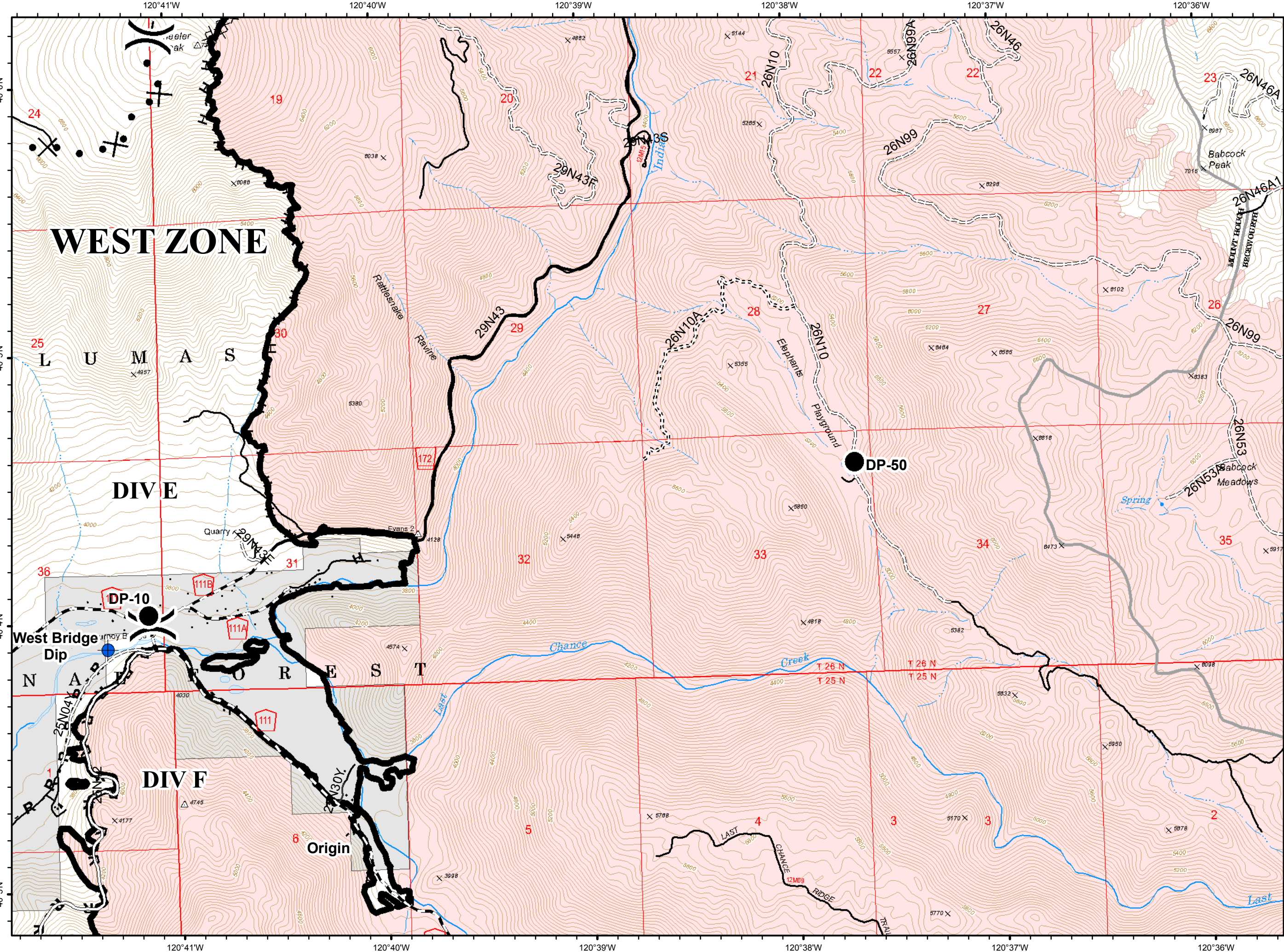




**F5**



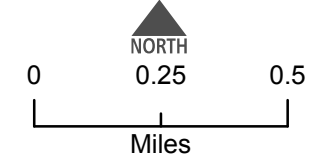
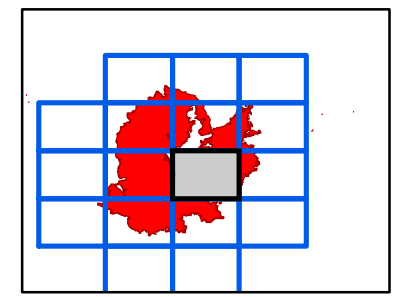
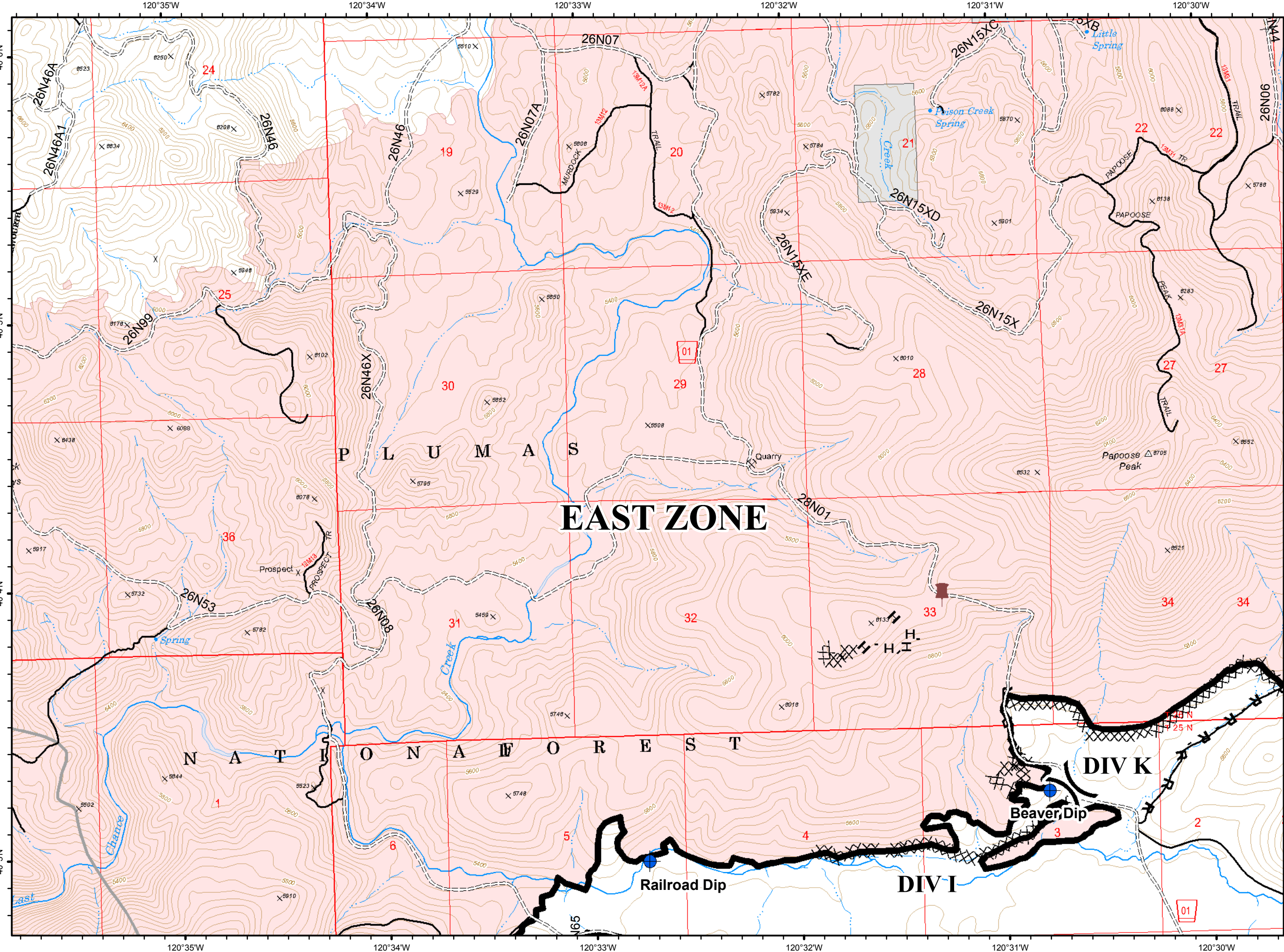
-  Dip Site
-  Drop Point
-  Division Break
-  Completed Line
-  Completed Dozer Line
-  Completed Hand Line
-  Road as Completed Line
-  Proposed Dozer Line
-  C - COUNTY, PARISH, BOROUGH
-  NOT - NOT NEEDED
-  P - PRIVATE
-  Basic Custodial Care (Closed)
-  High Clearance Roads
-  Suitable for Passenger Cars
-  High Degree of Comfort
-  travelRoute



F6



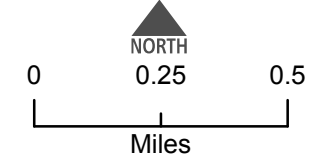
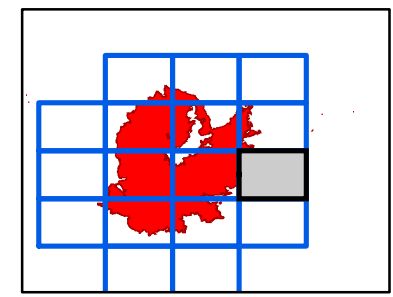
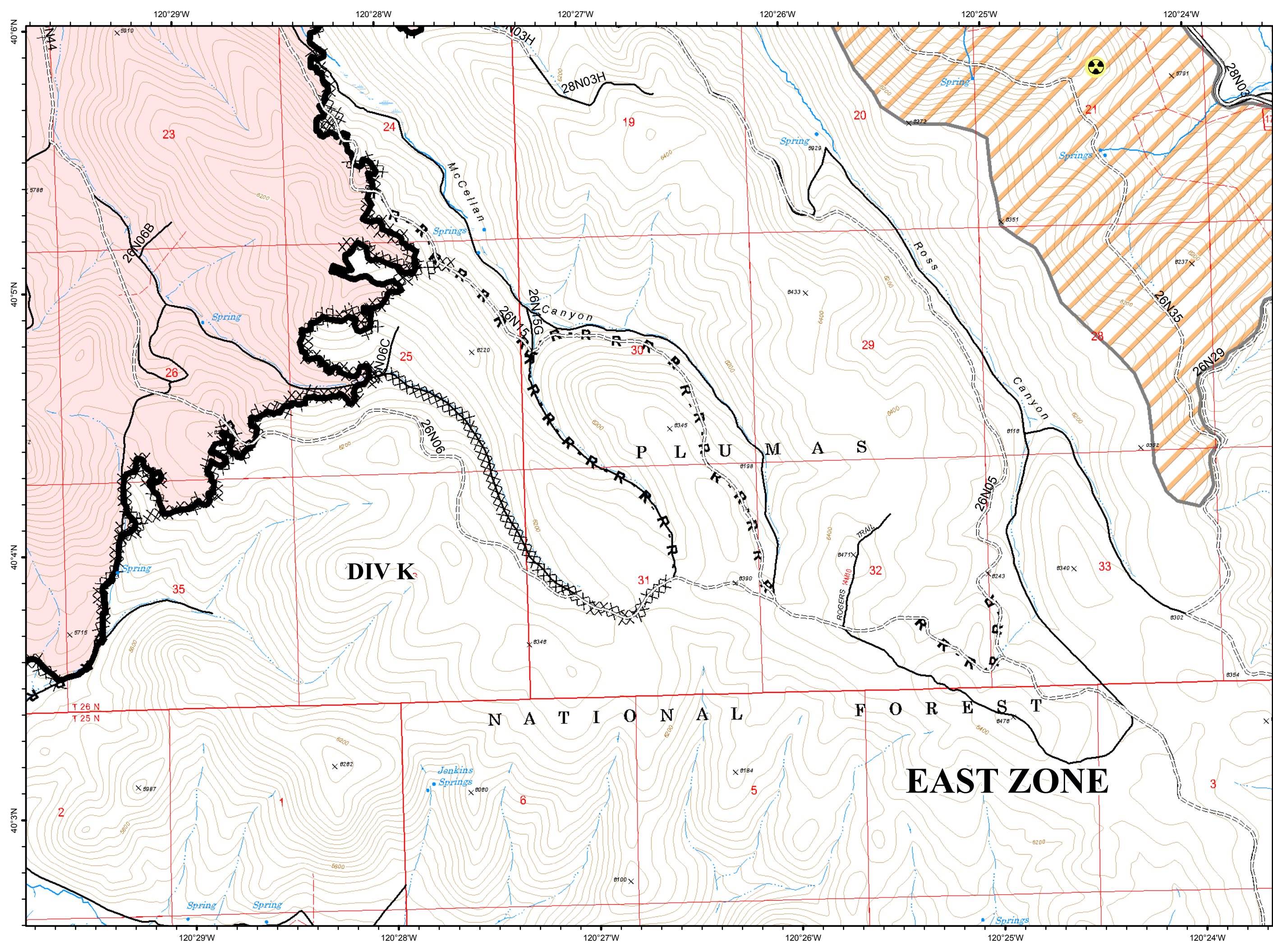
- Dip Site
- Dozer Push
- Division Break
- Completed Line
- Completed Dozer Line
- Completed Hand Line
- Road as Completed Line
- High Clearance Roads
- travelRoute



F7



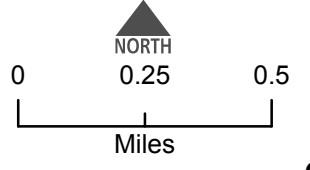
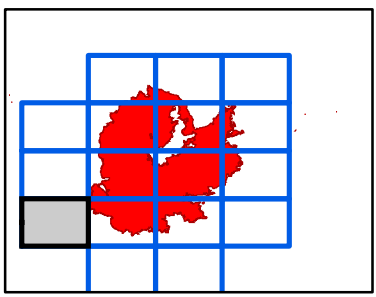
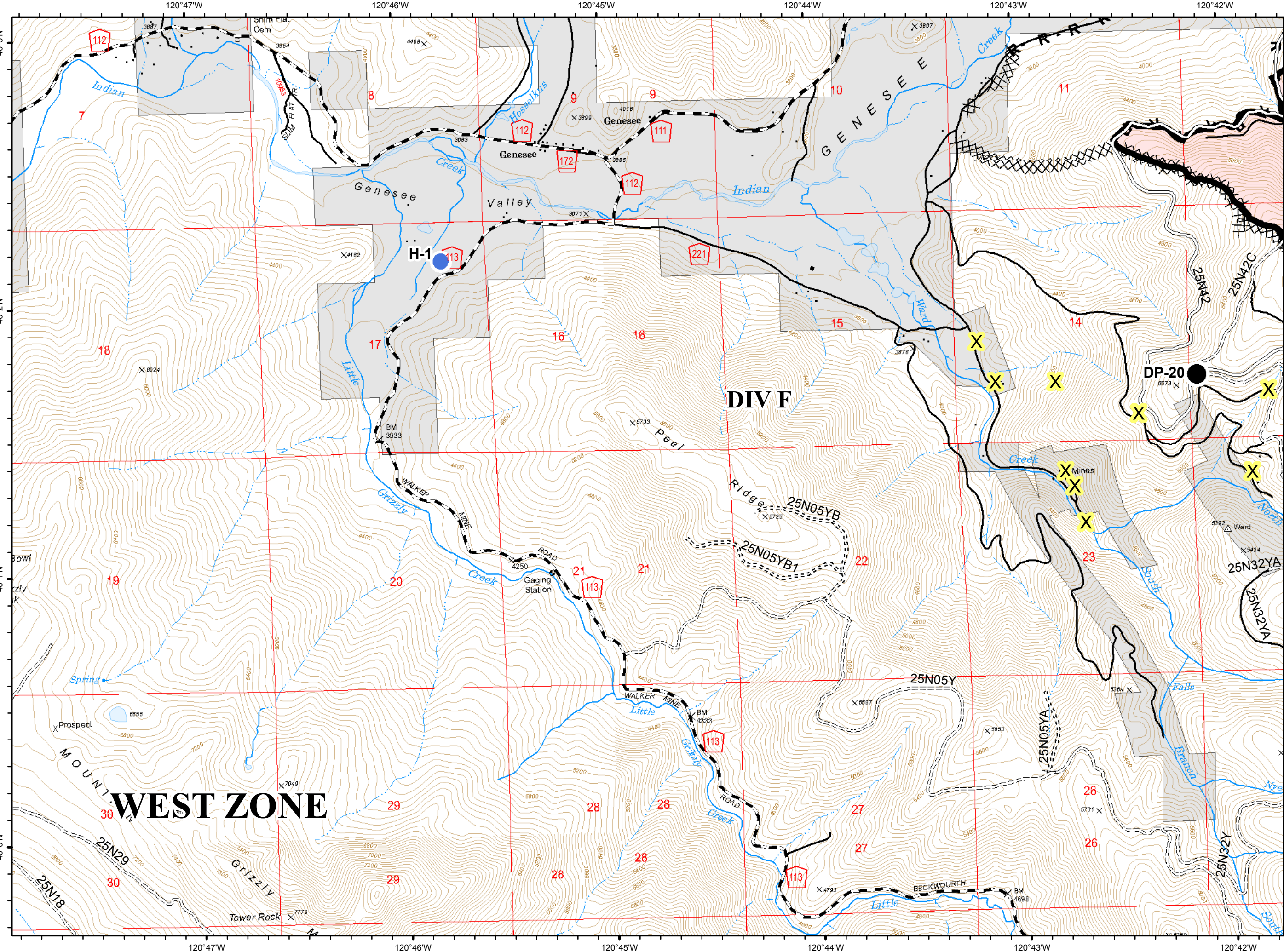
- Hazard
- Completed Line
- Completed Dozer Line
- H - Completed Hand Line
- R - Road as Completed Line
- Access or Improved Road
- Exclusion Zone
- NOT - NOT NEEDED
- High Clearance Roads
- Suitable for Passenger Cars
- travelRoute



G4



- Drop Point
- Helispot
- Completed Line
- XXXX Completed Dozer Line
- R - Road as Completed Line
- C - COUNTY, PARISH, BOROUGH
- NOT - NOT NEEDED
- ==== Basic Custodial Care (Closed)
- ==== High Clearance Roads
- Suitable for Passenger Cars
- travelRoute
- X Abandoned Mine



120°41'W 120°40'W 120°39'W 120°38'W 120°37'W 120°36'W

# IAP Map

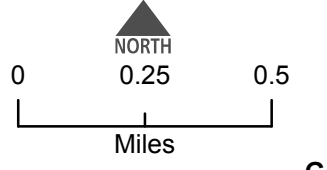
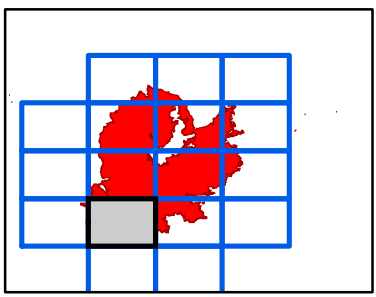
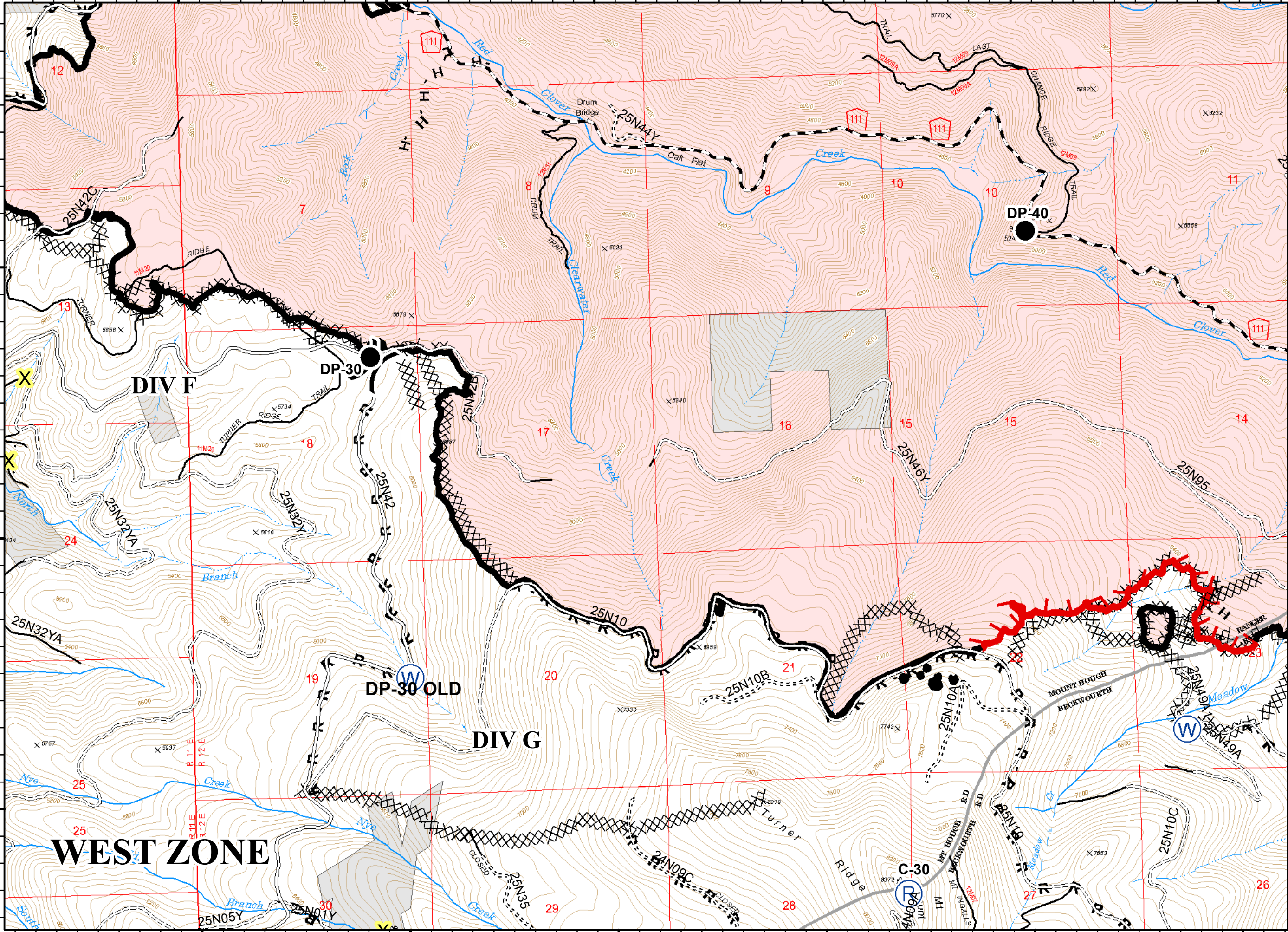
Walker  
CA-PNF-001324  
September 23, 2019

## G5



- Drop Point
- Ⓡ Repeater
- Ⓜ Water Source
- ⌋ Division Break

- ▭ Uncontrolled Fire Edge
- Completed Line
- ⊗ Completed Dozer Line
- H - Completed Hand Line
- R - Road as Completed Line
- Access or Improved Road
- C - COUNTY, PARISH, BOROUGH
- NOT - NOT NEEDED
- ⋯ Basic Custodial Care (Closed)
- ⋯ High Clearance Roads
- ⋯ Suitable for Passenger Cars
- ⋯ travelRoute
- X Abandoned Mine



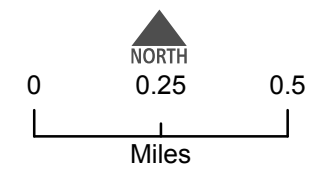
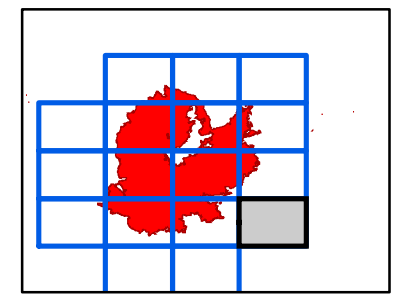
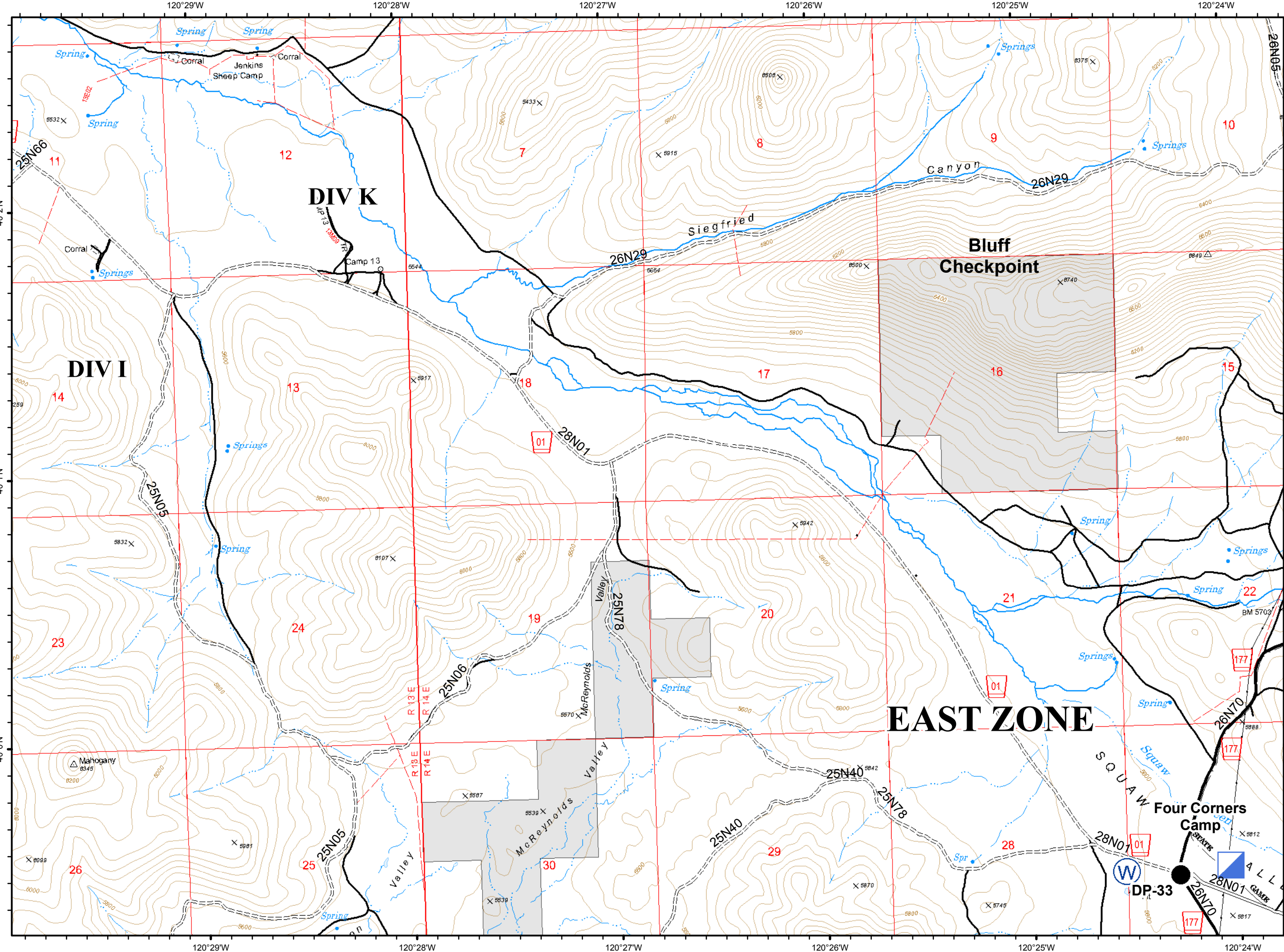
120°41'W 120°40'W 120°39'W 120°38'W 120°37'W 120°36'W



G7



- Drop Point
- ▣ Incident Command Post
- Ⓜ Water Source
- === High Clearance Roads
- Suitable for Passenger Cars
- High Degree of Comfort
- travelRoute

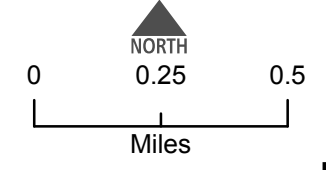
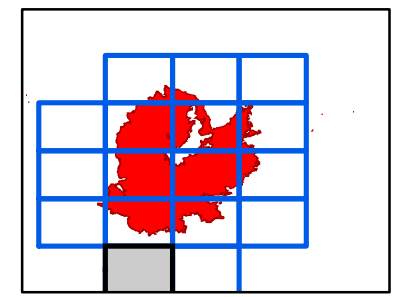
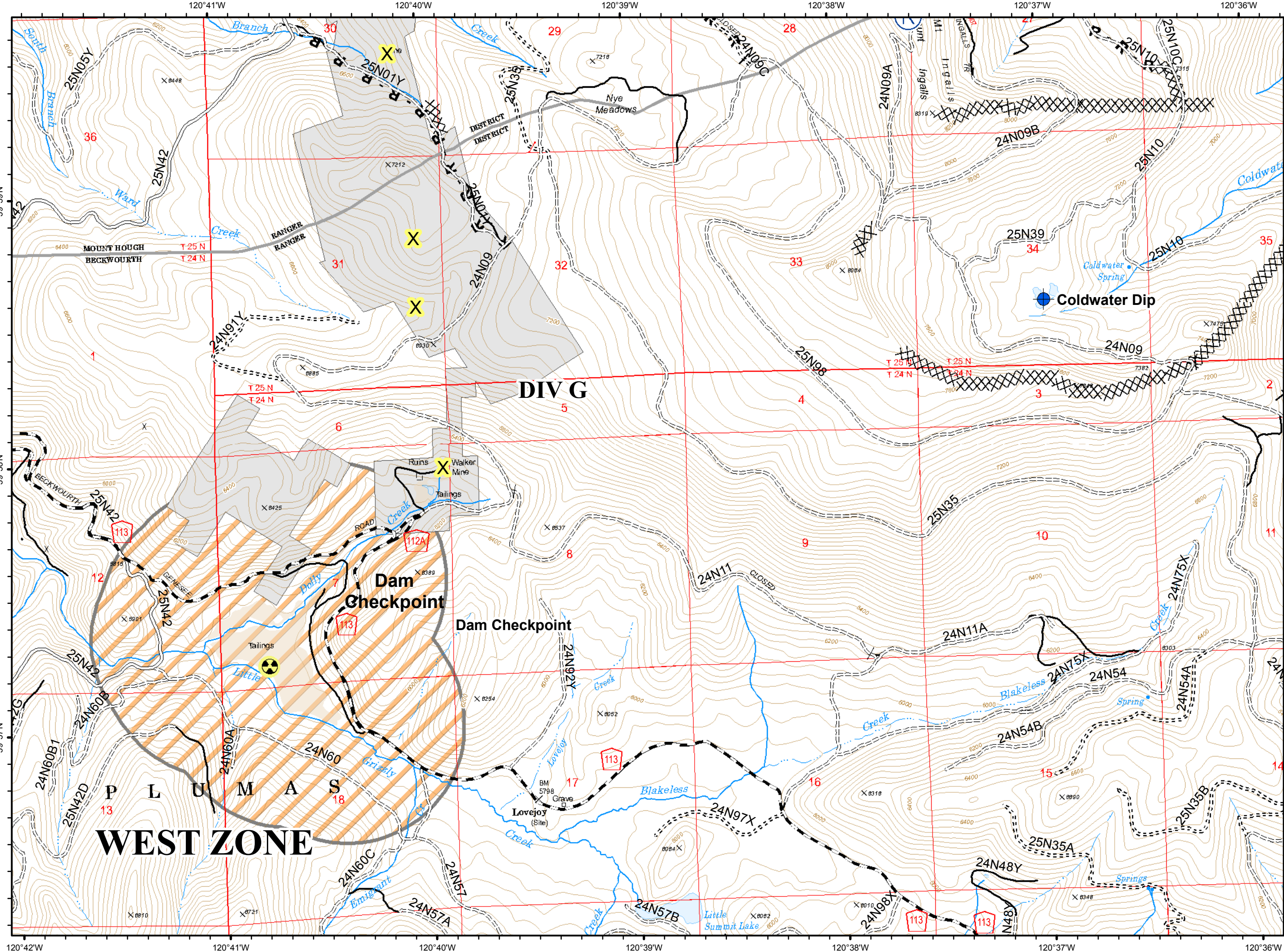




**H5**

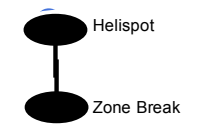


- Dip Site
- Hazard
- Repeater
- Completed Dozer Line
- R - Road as Completed Line
- Exclusion Zone
- C - COUNTY, PARISH, BOROUGH
- NOT - NOT NEEDED
- Basic Custodial Care (Closed)
- High Clearance Roads
- Suitable for Passenger Cars
- travelRoute
- Abandoned Mine

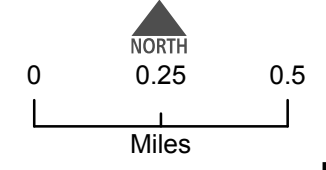
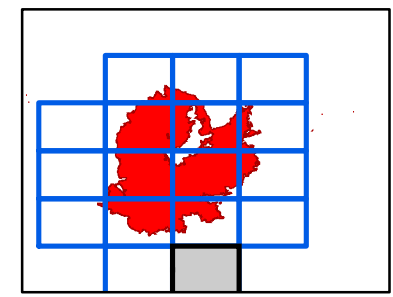
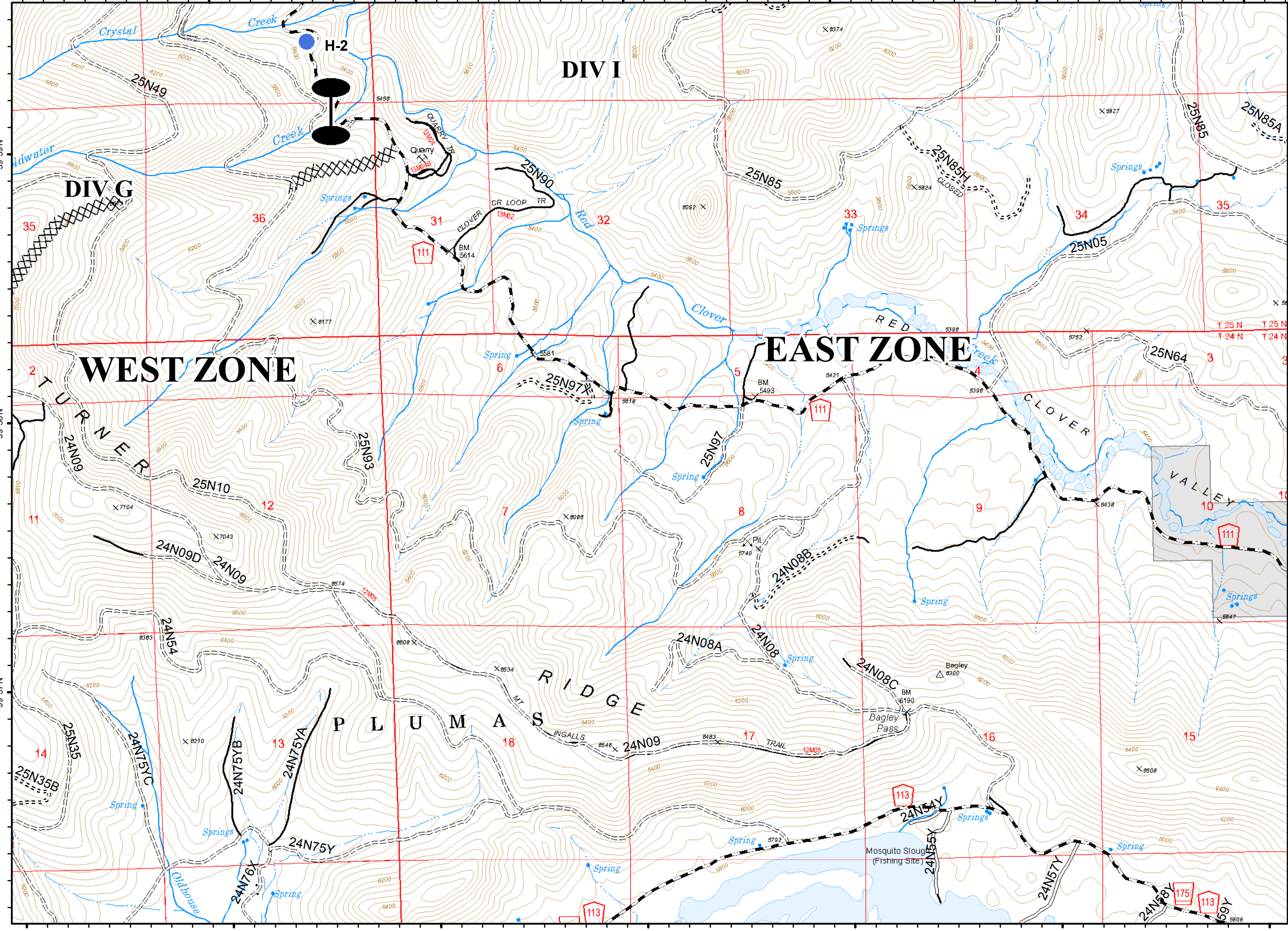


120°35'W 120°34'W 120°33'W 120°32'W 120°31'W 120°30'W

H6



- XXXX Completed Dozer Line
- H - Completed Hand Line
- Access or Improved Road
- C - COUNTY, PARISH, BOROUGH
- NOT - NOT NEEDED
- ==== Basic Custodial Care (Closed)
- ==== High Clearance Roads
- Suitable for Passenger Cars
- High Degree of Comfort
- travelRoute



120°36'W 120°35'W 120°34'W 120°33'W 120°32'W 120°31'W 120°30'W