

IAP Tile Index

Walker Fire
CA-PNF-001324
September 24, 2019



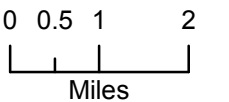
- Camp
- Culvert
- Dip Site
- Drop Point
- Dozer Push
- Hazard
- Helispot
- Incident Command Post
- Repeater
- Retardant/Mud Pit
- Safety Zone
- Water Source
- Other
- Zone Break
- Division Break
- Wildfire Daily Fire Perimeter



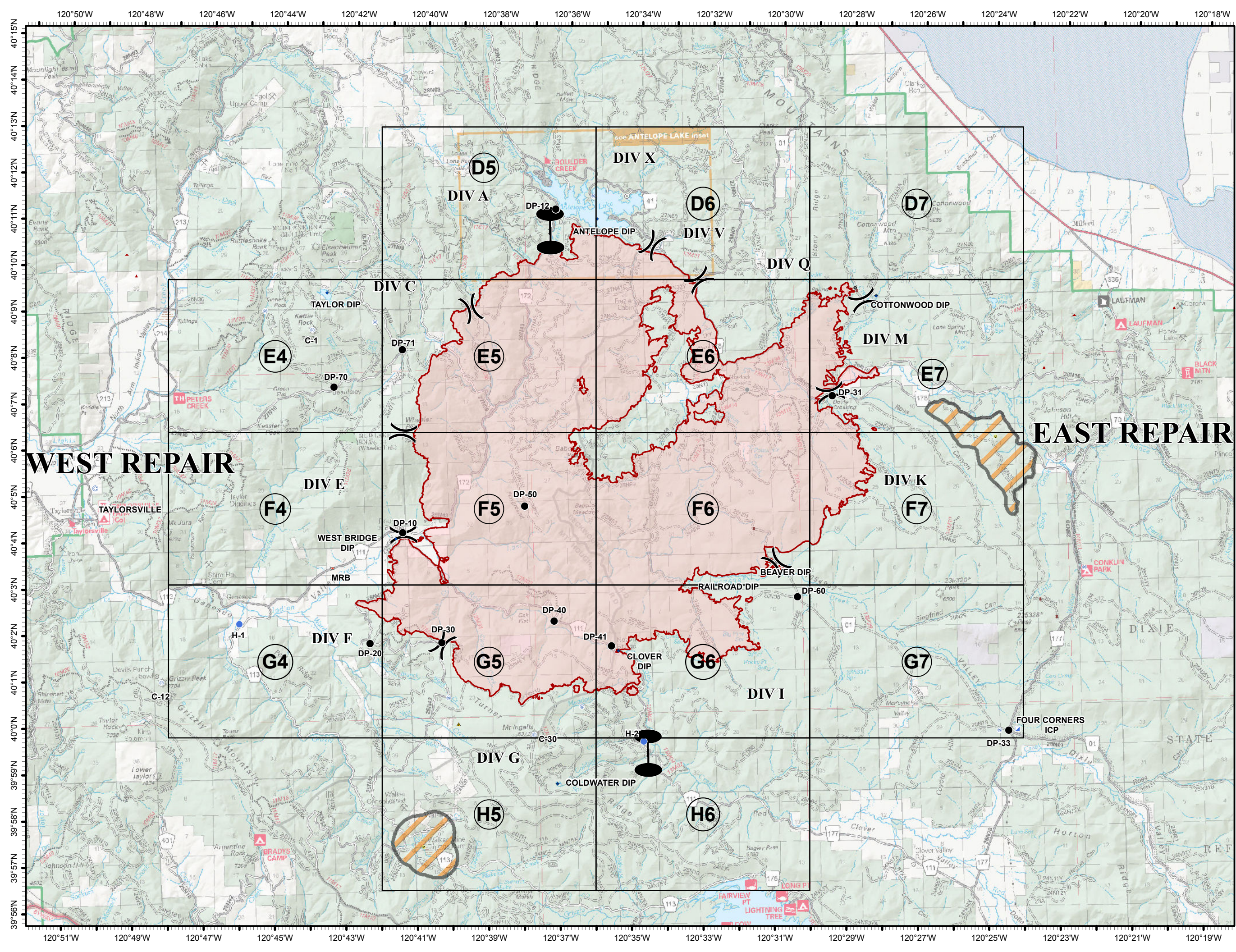
Mobile Maps



NORTH



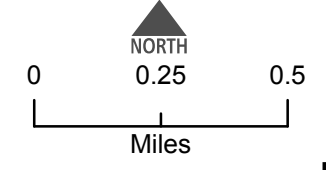
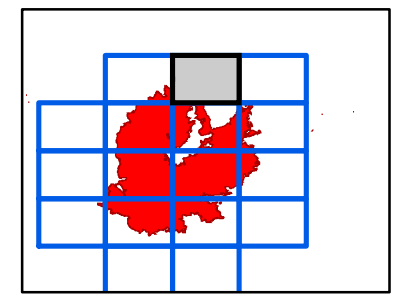
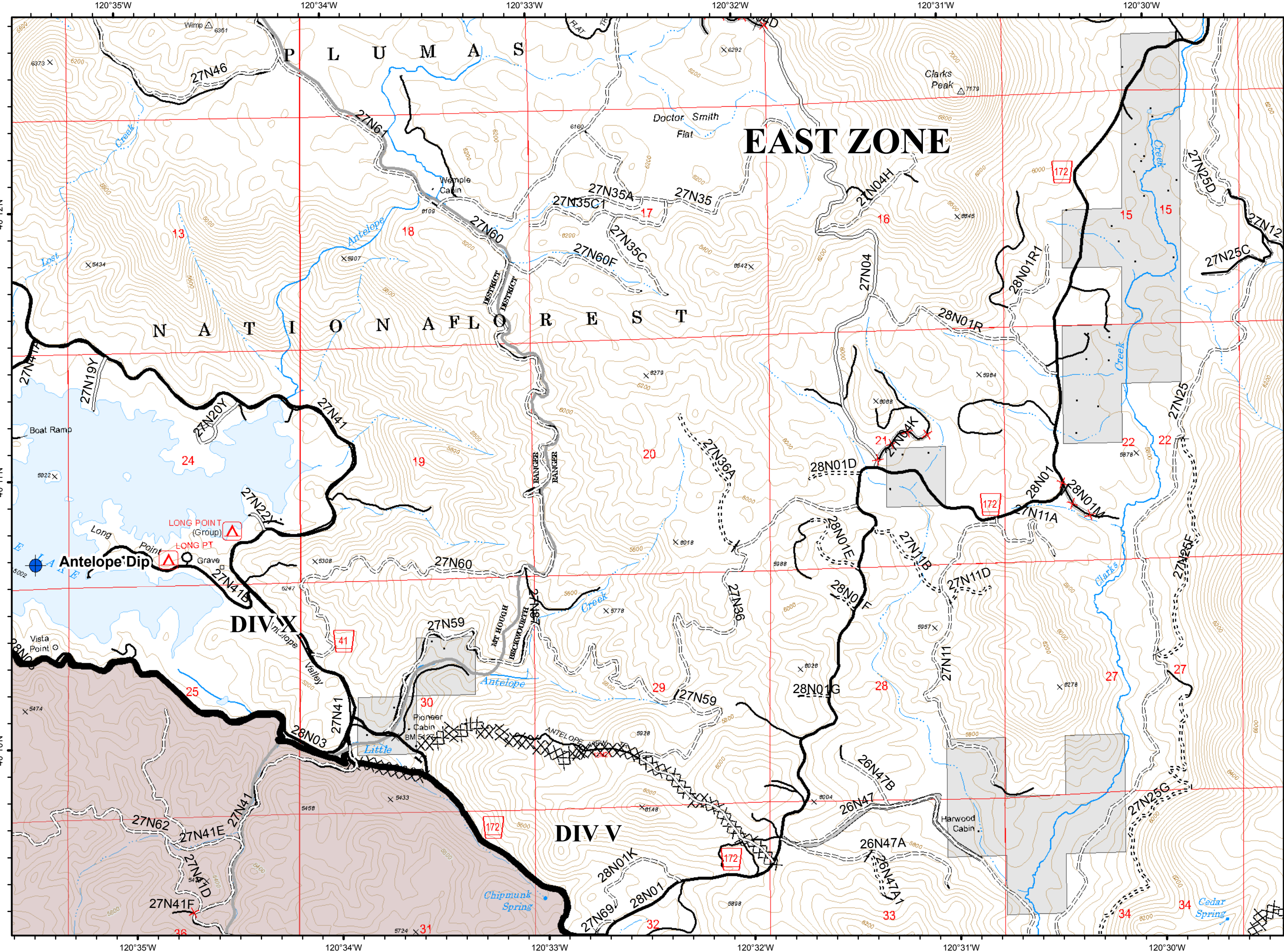
Miles



D6



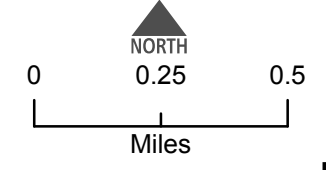
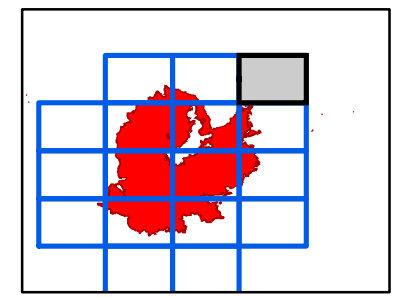
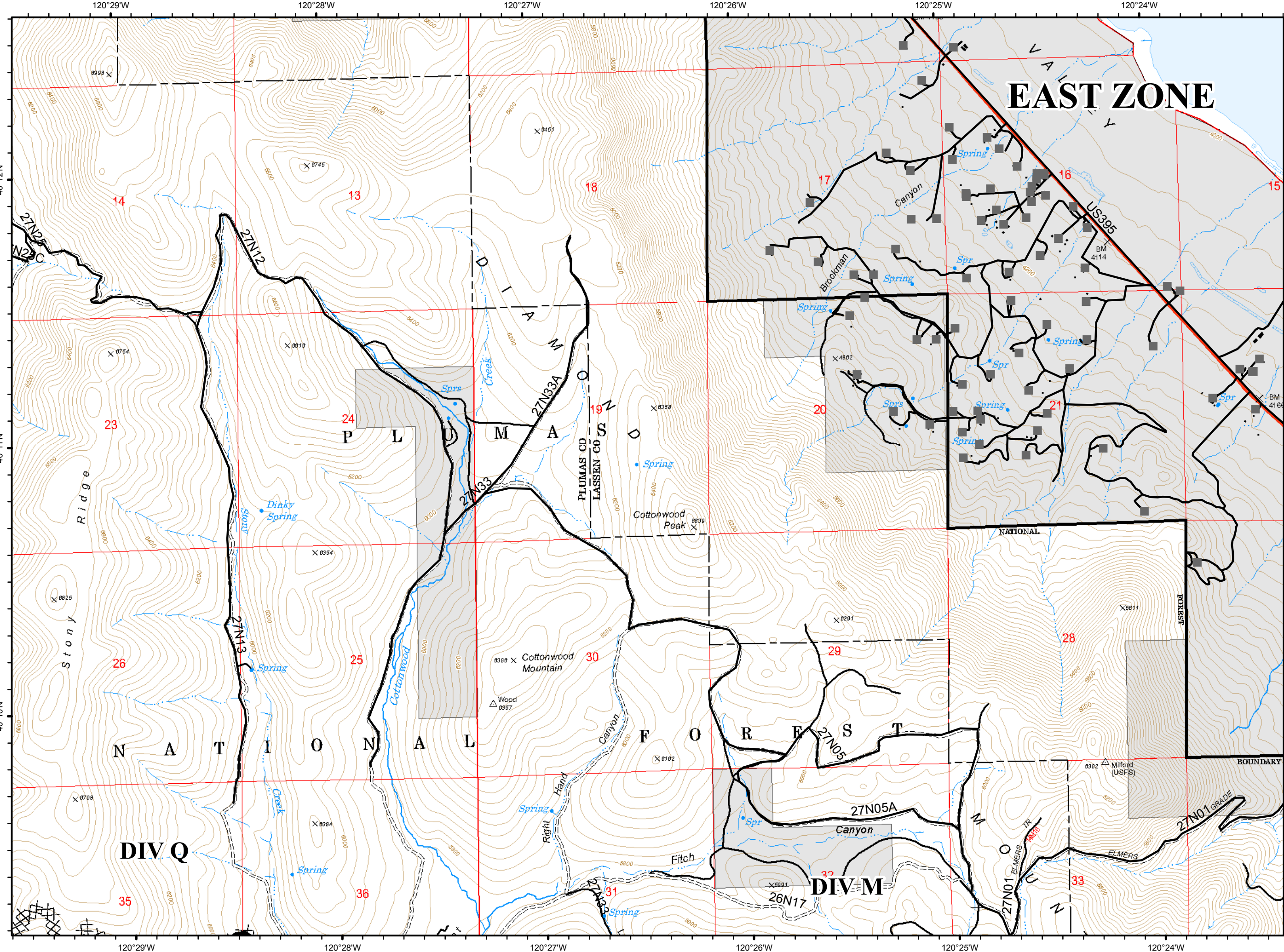
- Dip Site
- Completed Line
- Completed Dozer Line
- Completed Hand Line
- Access or Improved Road
- Milford Roads
- Basic Custodial Care (Closed)
- High Clearance Roads
- Suitable for Passenger Cars
- High Degree of Comfort
- NFSR Decommissioned
- Undetermined Decommissioned
- travelRoute



D7



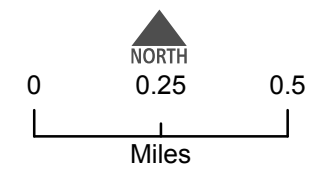
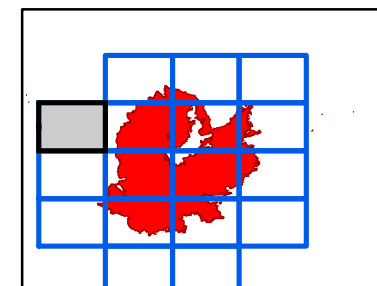
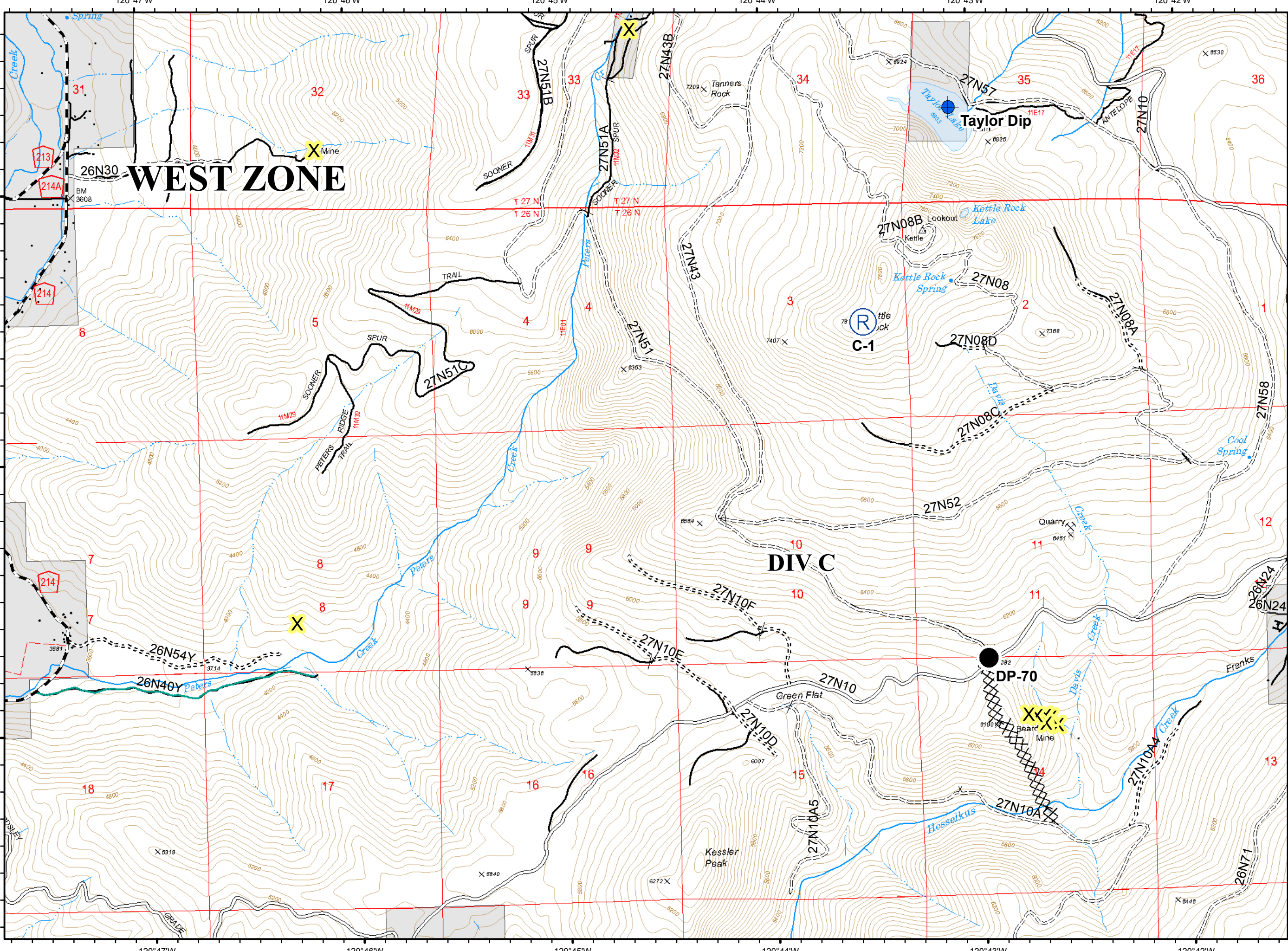
- Completed Line
- Completed Dozer Line
- Milford Roads
- NOT - NOT NEEDED
- US - US HIGHWAY OR ROUTE
- High Clearance Roads
- travelRoute
- Milford Habitable Structures



E4



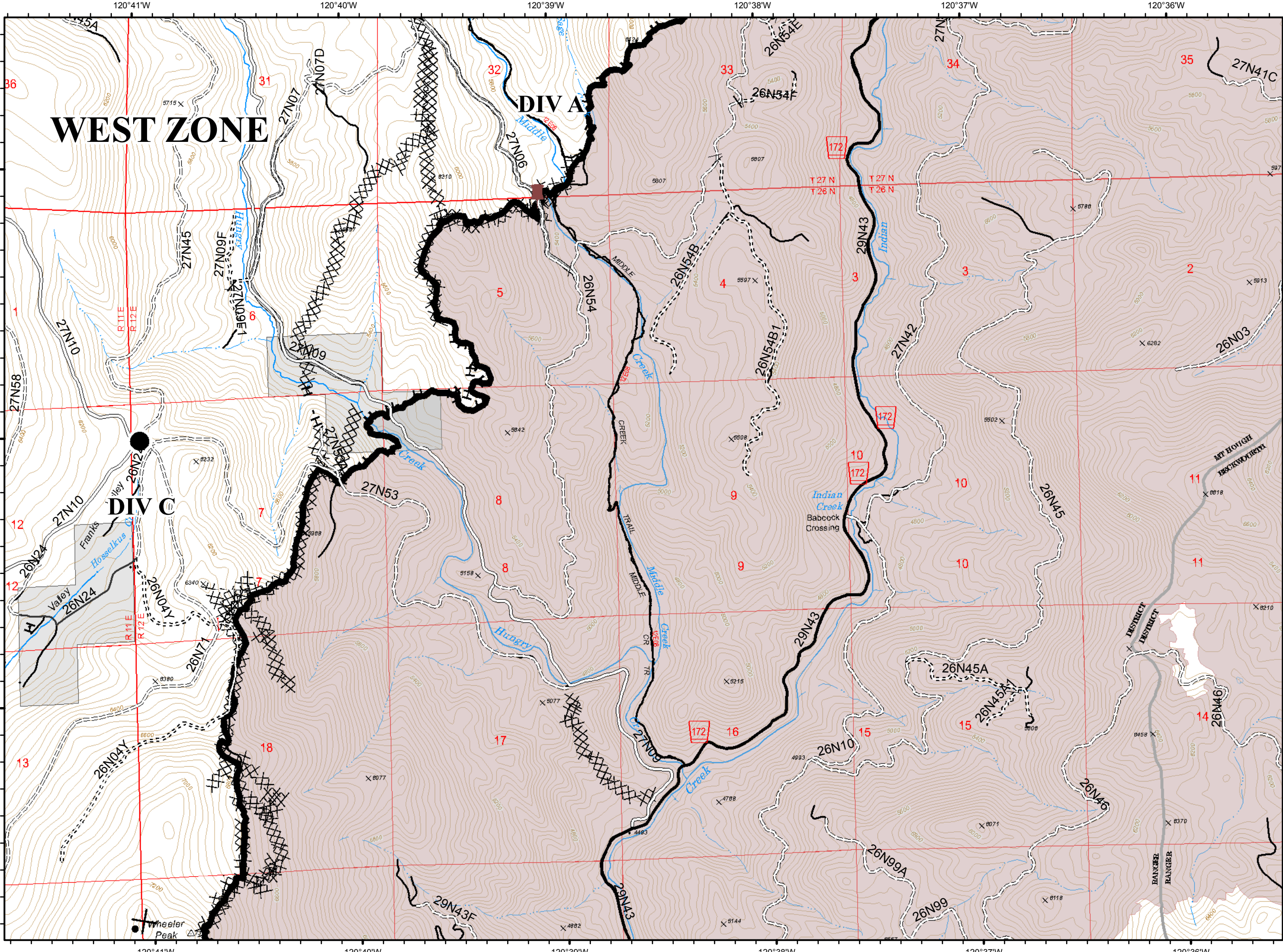
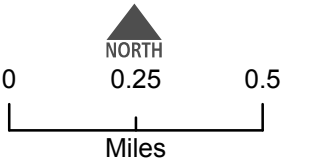
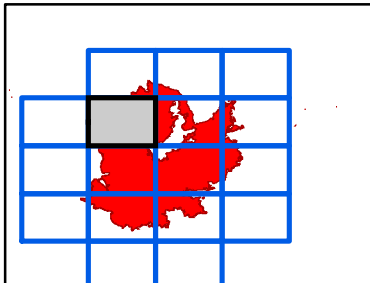
- Dip Site
- Drop Point
- Repeater
- Completed Dozer Line
- Completed Hand Line
- C - COUNTY, PARISH, BOROUGH
- NOT - NOT NEEDED
- P - PRIVATE
- <all other values>
- Basic Custodial Care (Closed)
- High Clearance Roads
- Suitable for Passenger Cars
- travelRoute
- Known Mine Hazards
- Abandoned Mine



E5



- Drop Point
- 📌 Dozer Push
- Completed Line
- XXXX Completed Dozer Line
- H - Completed Hand Line
- Access or Improved Road
- ✂ Proposed Dozer Line
- P - PRIVATE
- ==== Basic Custodial Care (Closed)
- ==== High Clearance Roads
- Suitable for Passenger Cars
- High Degree of Comfort
- travelRoute



WEST ZONE

DIV A

DIV C

Wheeler Peak

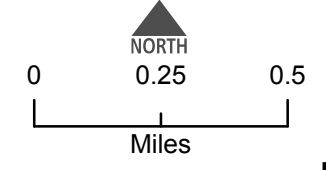
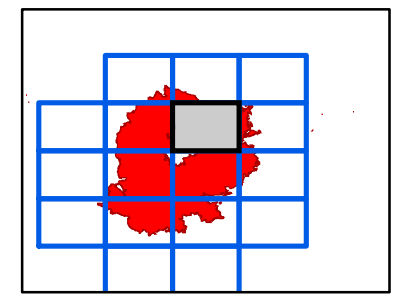
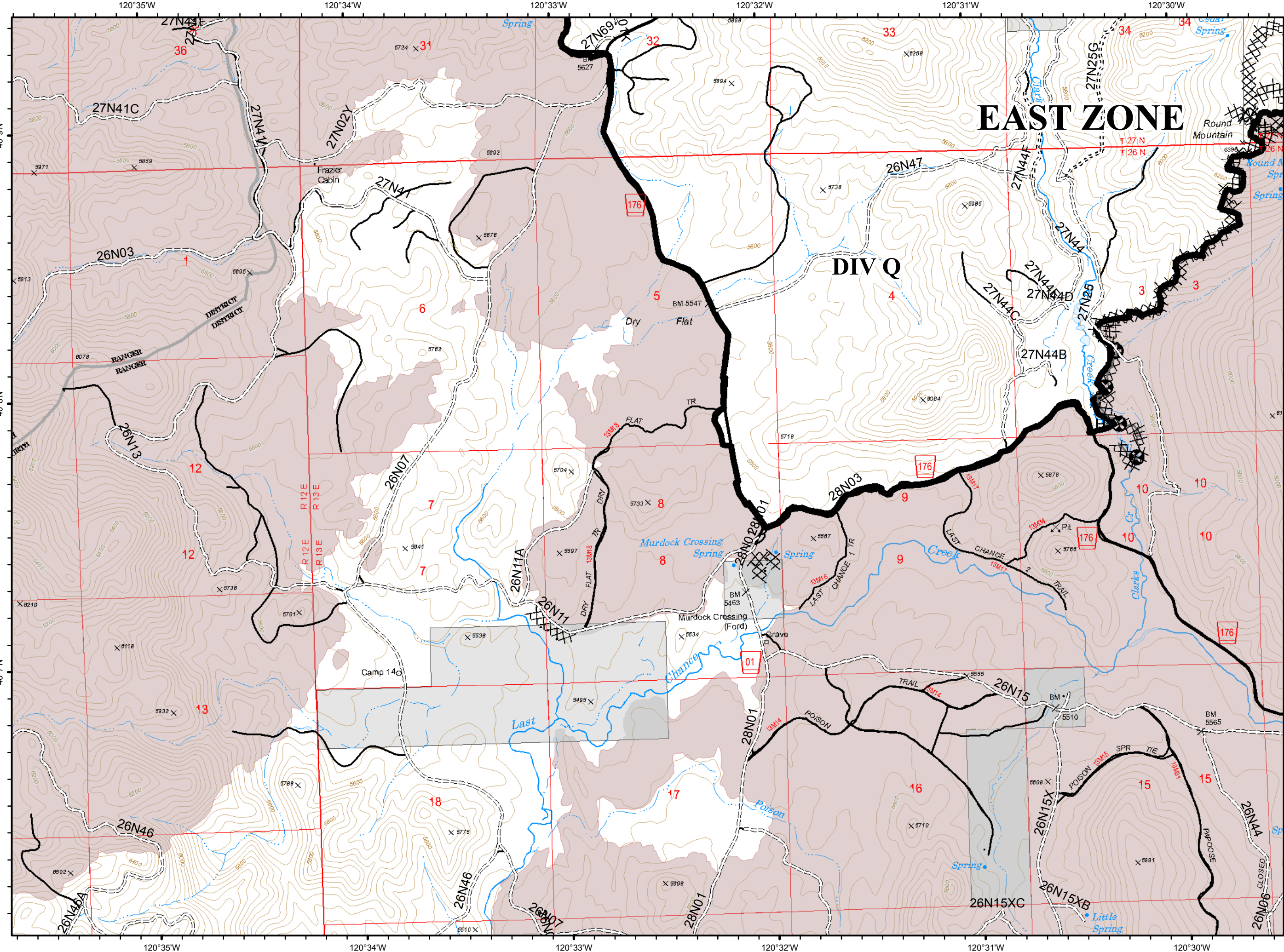
DISTRICT DISTRICT

RANGER RANGER

E6



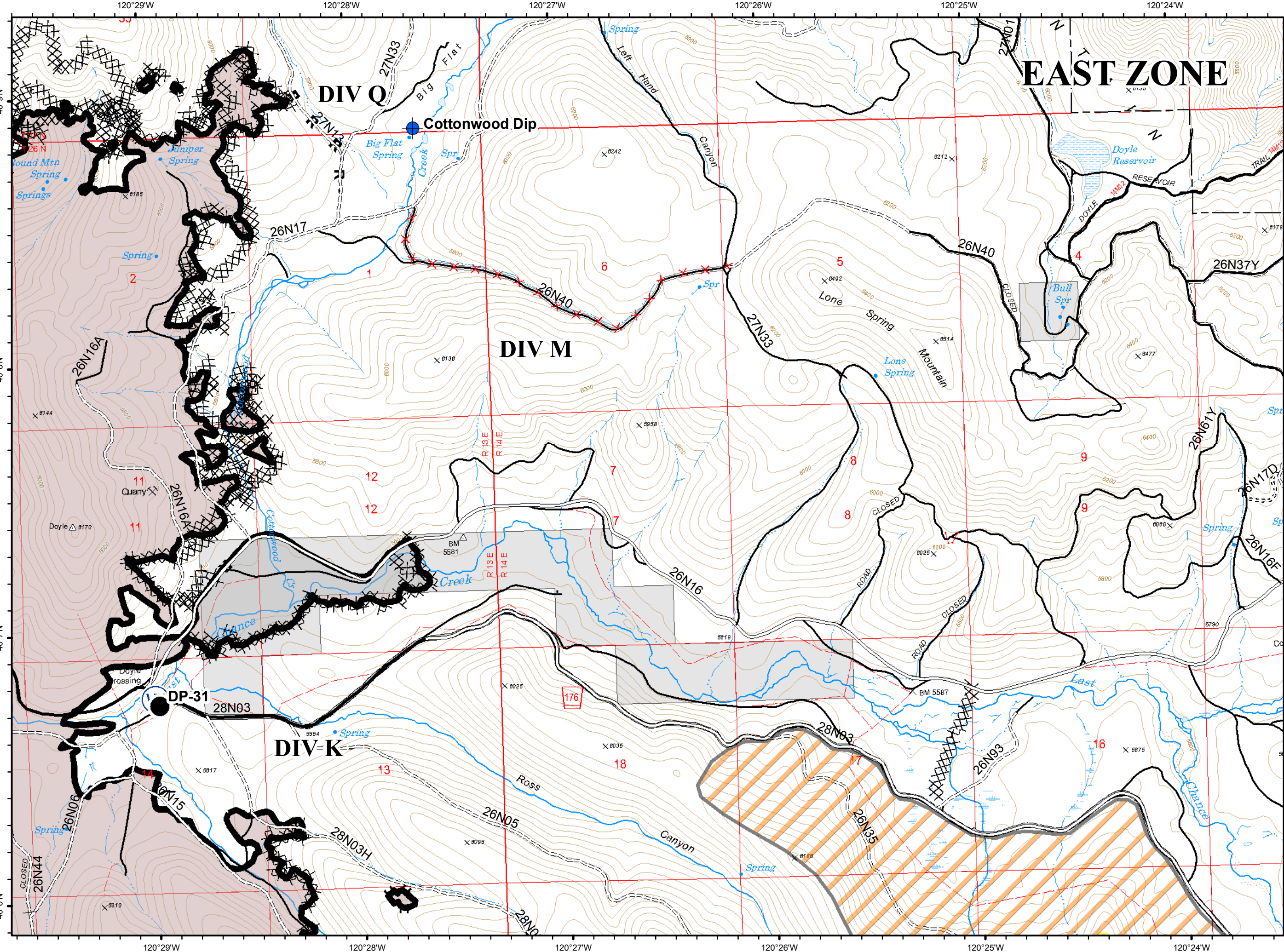
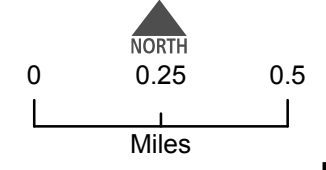
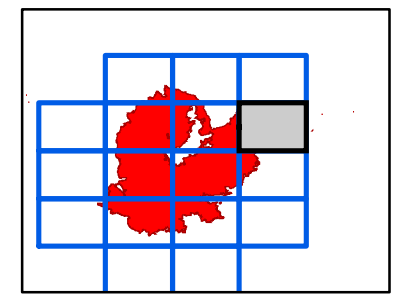
- Completed Line
- XXXX Completed Dozer Line
- H - Completed Hand Line
- ⊕ Other
- ==== Basic Custodial Care (Closed)
- ==== High Clearance Roads
- High Degree of Comfort
- X - Undetermined Decommissioned
- travelRoute



E7



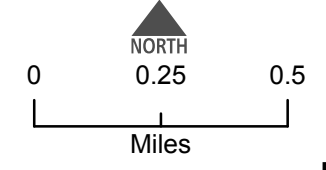
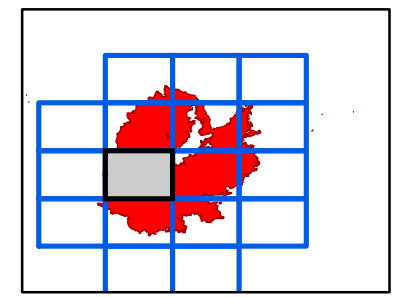
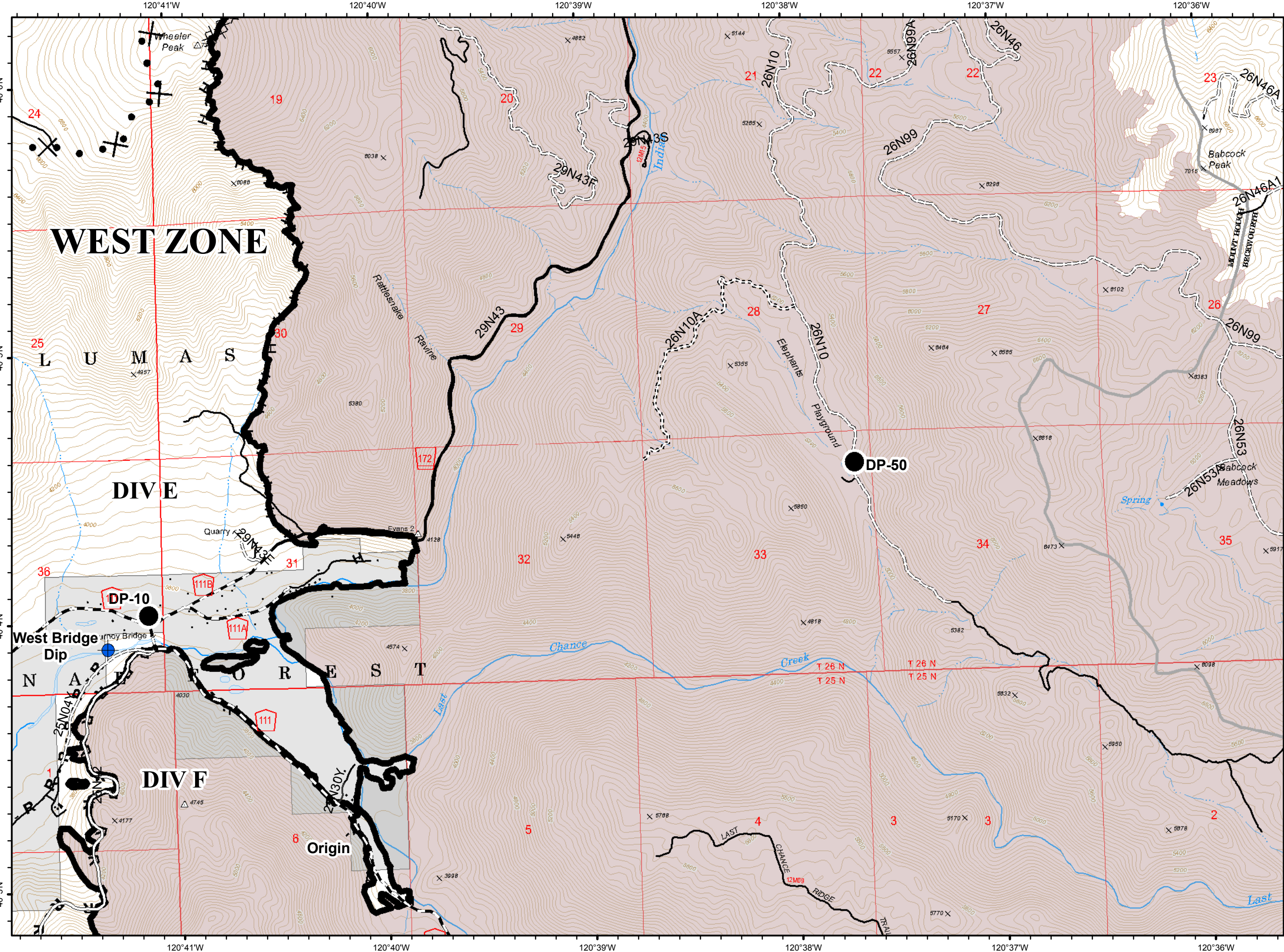
- Dip Site
- Drop Point
- Hazard
- Water Source
- Completed Line
- Completed Dozer Line
- Completed Hand Line
- Road as Completed Line
- Access or Improved Road
- Exclusion Zone
- Milford Roads
- NOT - NOT NEEDED
- Basic Custodial Care (Closed)
- High Clearance Roads
- Suitable for Passenger Cars
- High Degree of Comfort
- NFSR Decommissioned
- travelRoute



F5



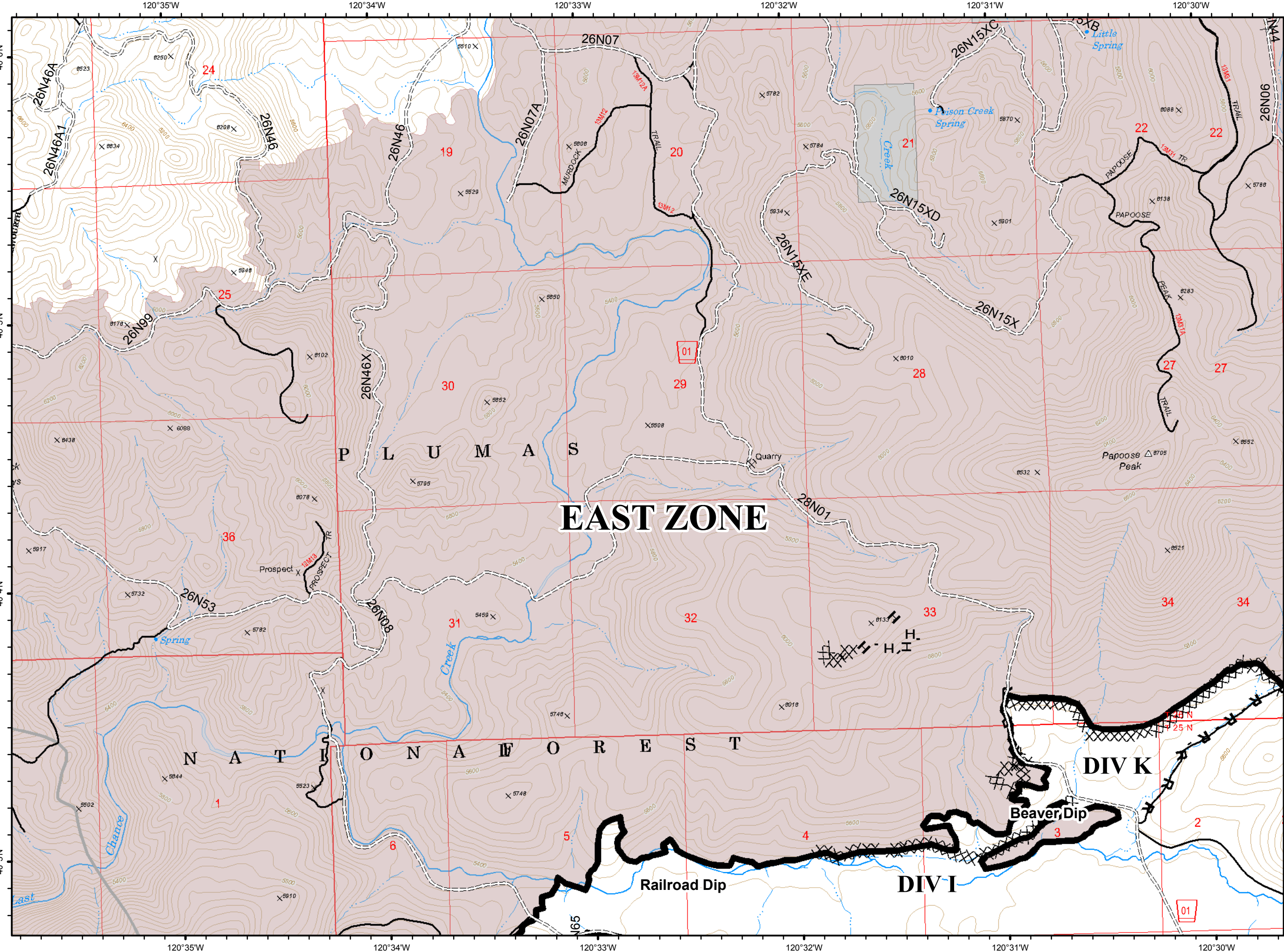
- Dip Site
- Drop Point
- Completed Line
- Completed Dozer Line
- Completed Hand Line
- Road as Completed Line
- Proposed Dozer Line
- C - COUNTY, PARISH, BOROUGH
- NOT - NOT NEEDED
- P - PRIVATE
- Basic Custodial Care (Closed)
- High Clearance Roads
- Suitable for Passenger Cars
- High Degree of Comfort
- travelRoute



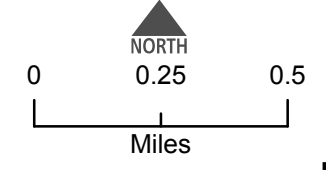
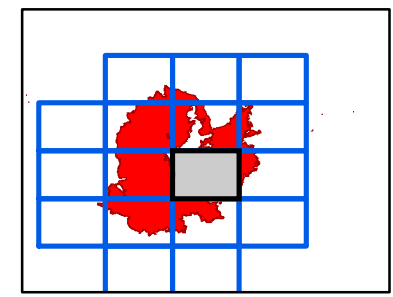
F6



- Completed Line
- Completed Dozer Line
- H - Completed Hand Line
- R - Road as Completed Line
- High Clearance Roads
- travelRoute



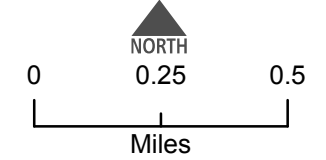
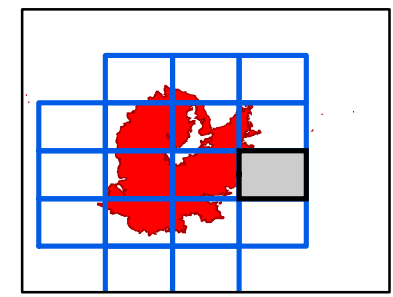
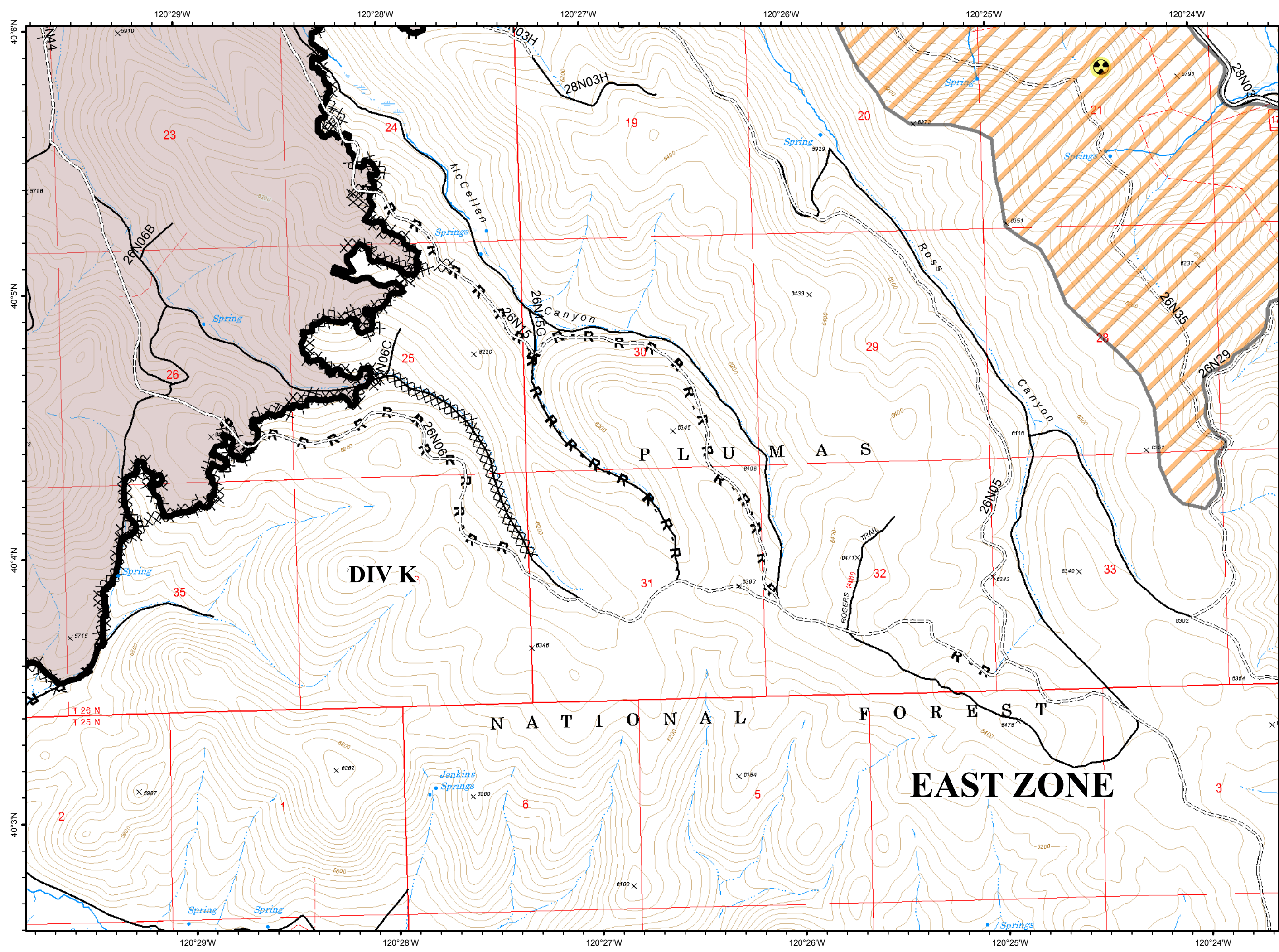
EAST ZONE



F7



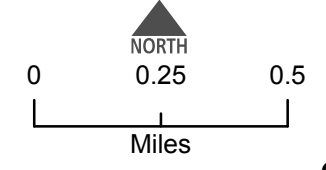
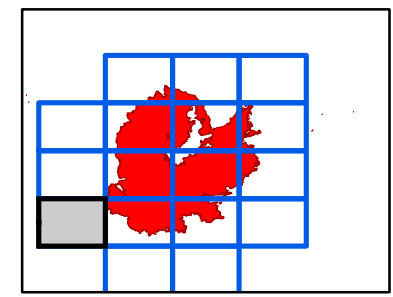
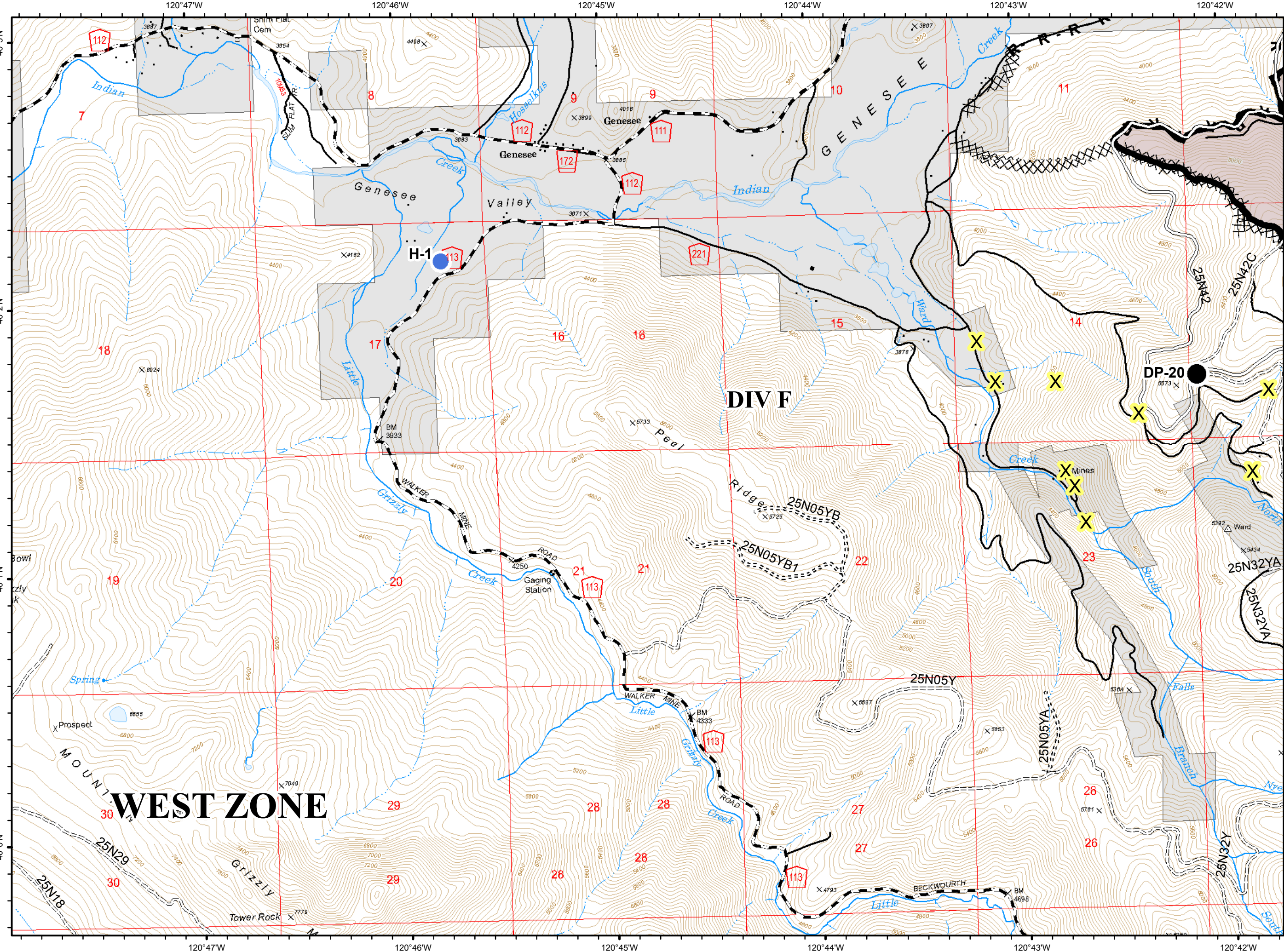
- Hazard
- Completed Line
- Completed Dozer Line
- H - Completed Hand Line
- R - Road as Completed Line
- Access or Improved Road
- Exclusion Zone
- NOT - NOT NEEDED
- High Clearance Roads
- Suitable for Passenger Cars
- travelRoute



G4



- Drop Point
- Helispot
- Completed Line
- Completed Dozer Line
- R - Road as Completed Line
- C - COUNTY, PARISH, BOROUGH
- NOT - NOT NEEDED
- Basic Custodial Care (Closed)
- High Clearance Roads
- Suitable for Passenger Cars
- travelRoute
- Abandoned Mine

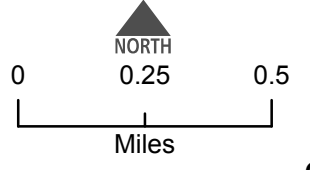
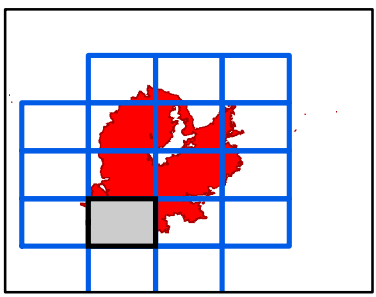
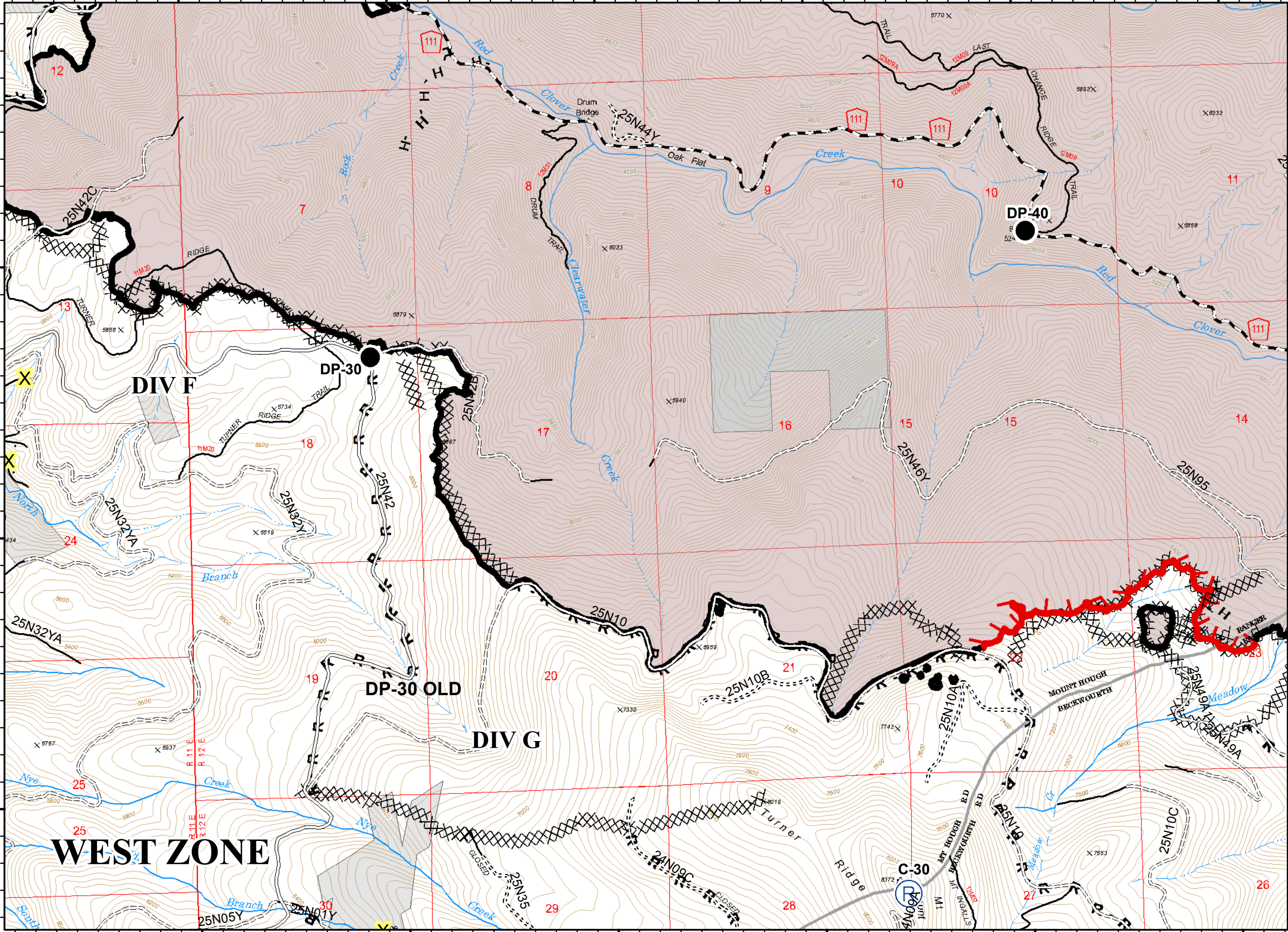


120°41'W 120°40'W 120°39'W 120°38'W 120°37'W 120°36'W

G5



- Drop Point
- Repeater
- Uncontrolled Fire Edge
- Completed Line
- Completed Dozer Line
- H - Completed Hand Line
- R - Road as Completed Line
- Access or Improved Road
- C - COUNTY, PARISH, BOROUGH
- NOT - NOT NEEDED
- Basic Custodial Care (Closed)
- High Clearance Roads
- Suitable for Passenger Cars
- travelRoute
- Abandoned Mine

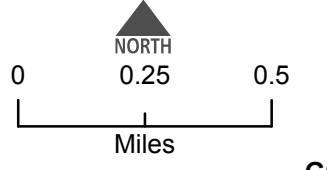
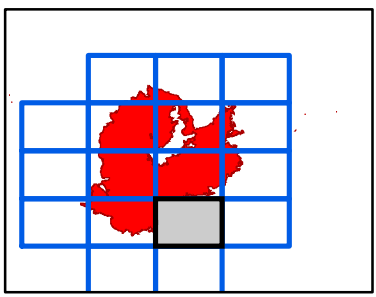
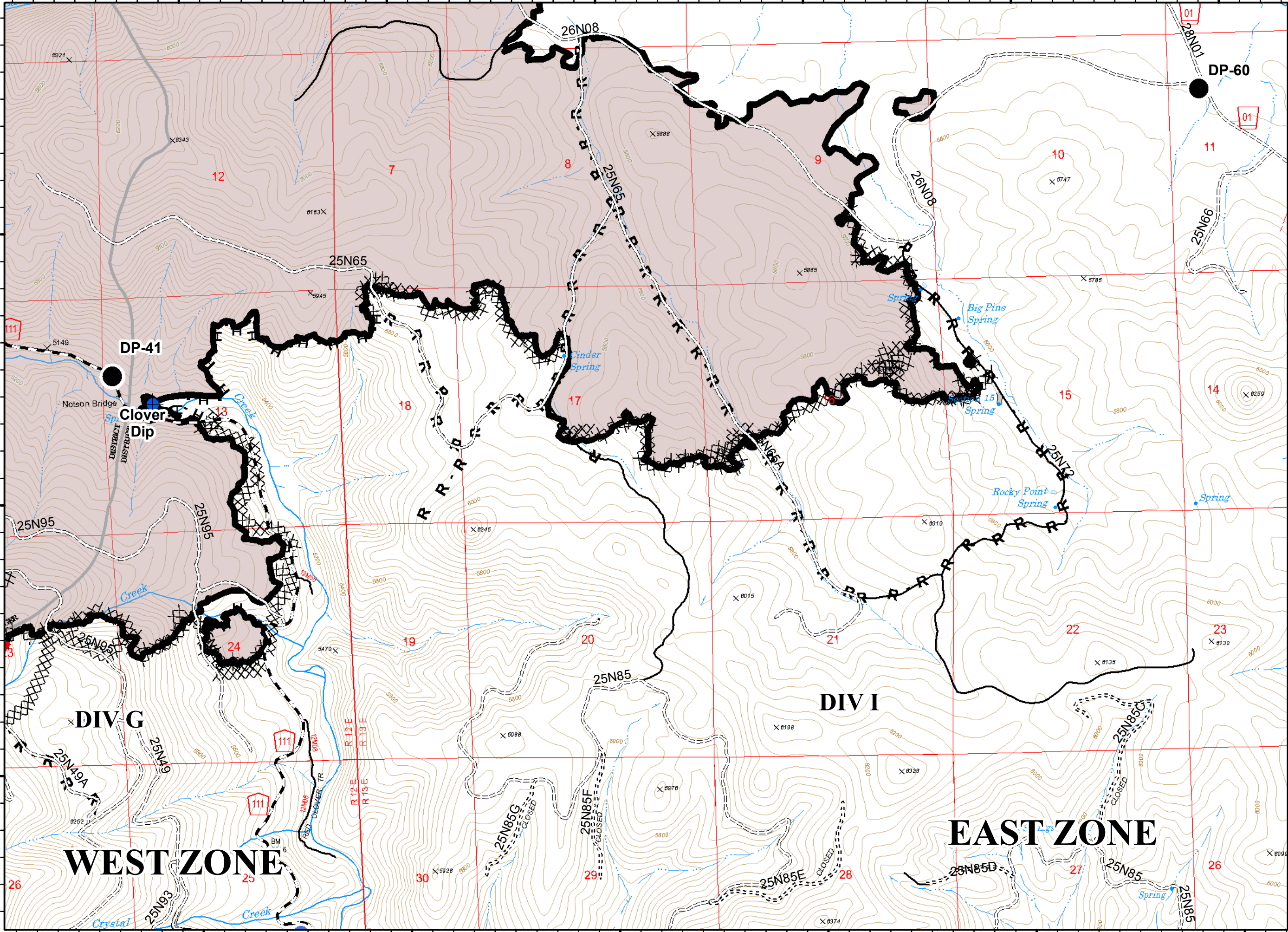


120°35'W 120°34'W 120°33'W 120°32'W 120°31'W 120°30'W

G6



- Dip Site
- Drop Point
- Helispot
- Uncontrolled Fire Edge
- Completed Line
- Completed Dozer Line
- Completed Hand Line
- Road as Completed Line
- Access or Improved Road
- C - COUNTY, PARISH, BOROUGH
- Basic Custodial Care (Closed)
- High Clearance Roads
- Undetermined, Unknown and Other
- travelRoute

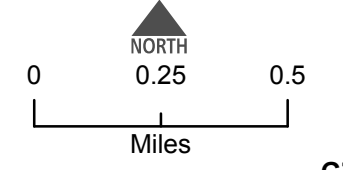
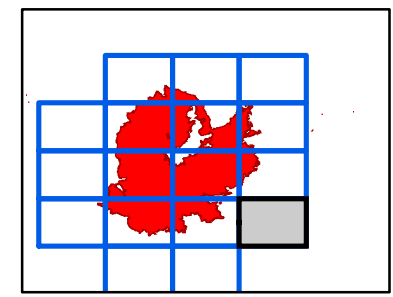
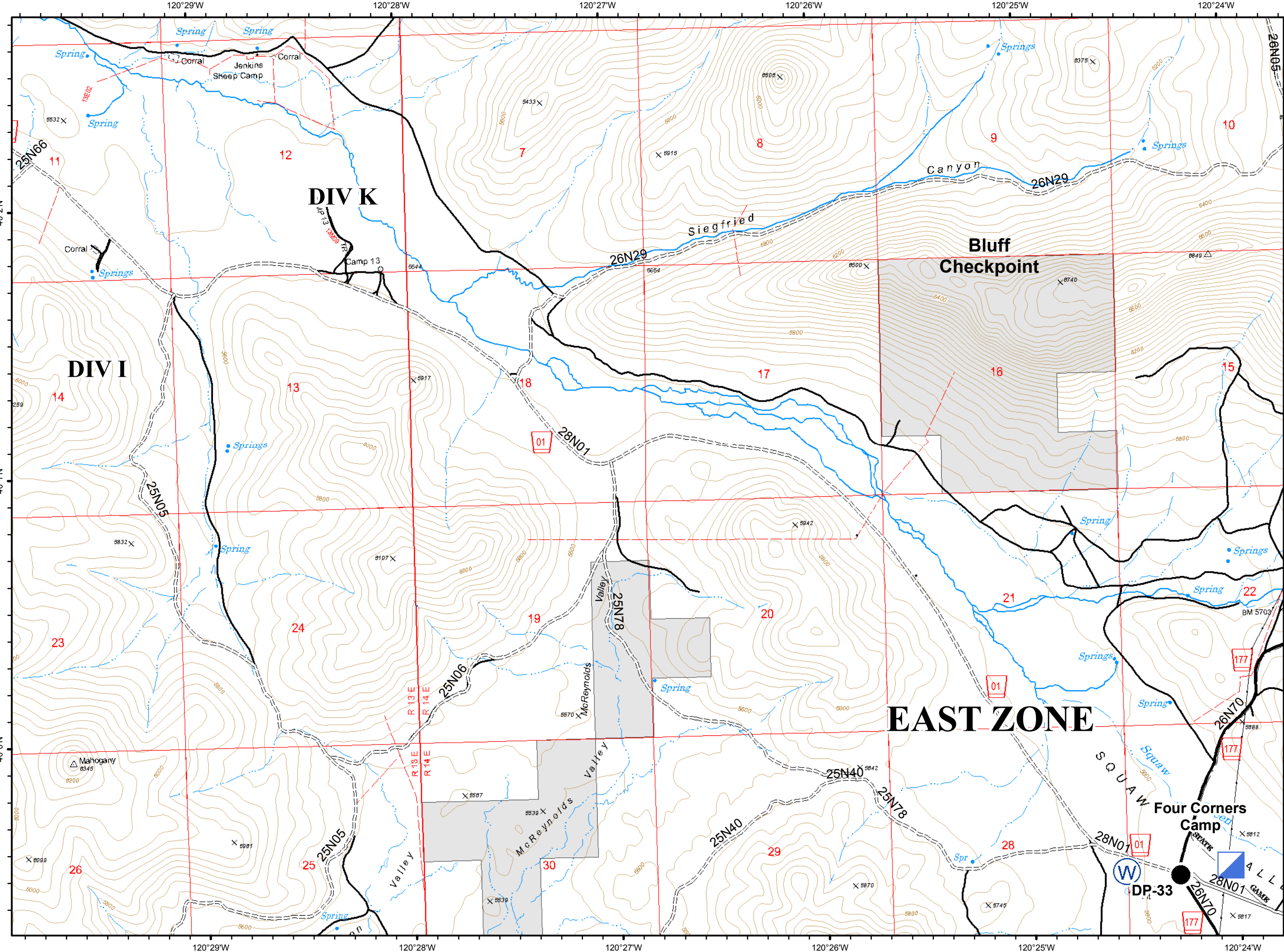


120°35'W 120°34'W 120°33'W 120°32'W 120°31'W 120°30'W

G7



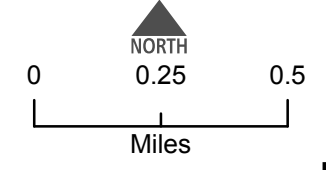
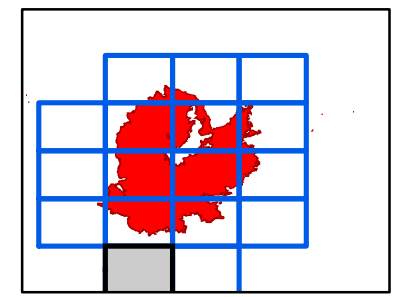
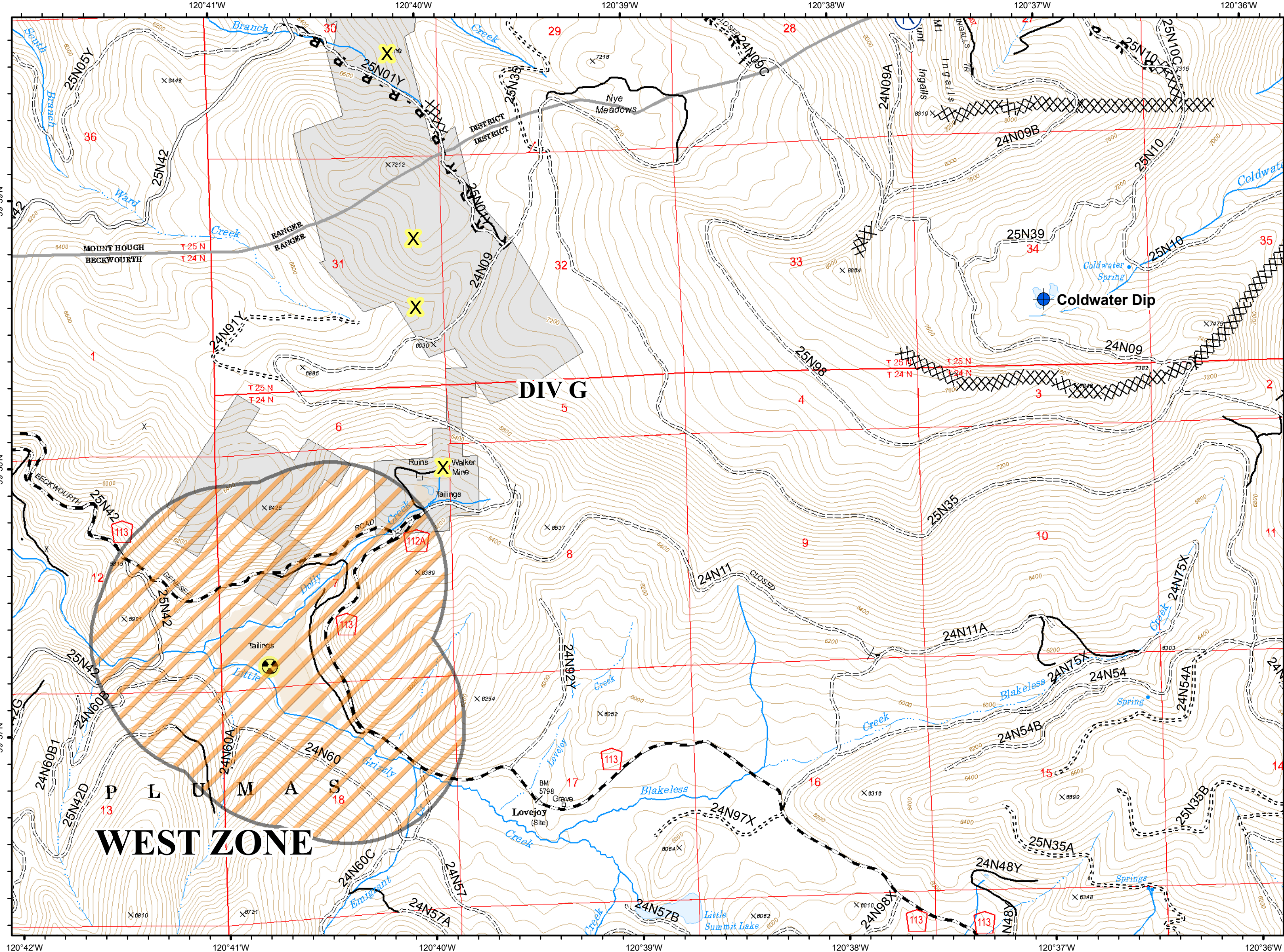
- Drop Point
- ▣ Incident Command Post
- ⊕ Water Source
- === High Clearance Roads
- Suitable for Passenger Cars
- High Degree of Comfort
- travelRoute



H5



- Dip Site
- Hazard
- Repeater
- Completed Dozer Line
- R - Road as Completed Line
- Exclusion Zone
- C - COUNTY, PARISH, BOROUGH
- NOT - NOT NEEDED
- Basic Custodial Care (Closed)
- High Clearance Roads
- Suitable for Passenger Cars
- travelRoute
- Abandoned Mine



H6



- Helispot
- XXXX Completed Dozer Line
- H - Completed Hand Line
- Access or Improved Road
- C - COUNTY, PARISH, BOROUGH
- NOT - NOT NEEDED
- Basic Custodial Care (Closed)
- ==== High Clearance Roads
- Suitable for Passenger Cars
- High Degree of Comfort
- travelRoute

