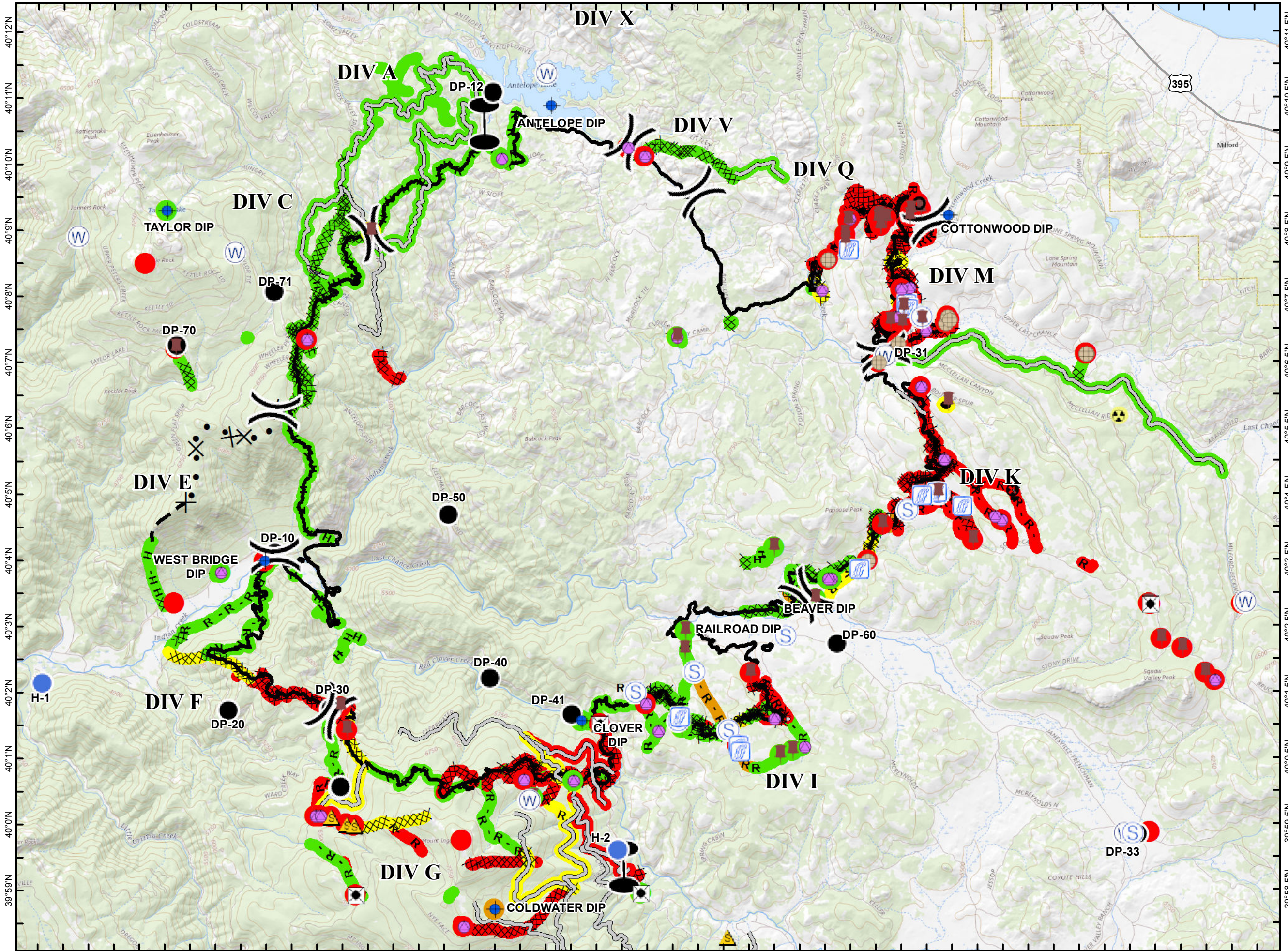


120°45'W 120°44'W 120°43'W 120°42'W 120°41'W 120°40'W 120°39'W 120°38'W 120°37'W 120°36'W 120°35'W 120°34'W 120°33'W 120°32'W 120°31'W 120°30'W 120°29'W 120°28'W 120°27'W 120°26'W 120°25'W 120°24'W 120°23'W 120°22'W 120°21'W

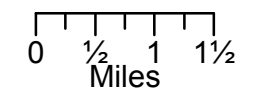


Suppression Repair Map
Walker Fire
CA-PNF-001324
9/28/2019



- Controlled Line
 - Completed Dozer Line
 - Completed Hand Line
 - Road as Completed Line
 - Access or Improved Road
 - Proposed Dozer Line
 - Planned Fire Line
 - Other
- Repair Status**
- Repair Needed
 - In Progress
 - Completed - Ready for Inspection
 - Completed - Inspected
 - Special Treatment Area

	Total Miles	% Completed & Inspected
Dozer Line	76.0	32%
Hand Line	14.0	100%
Road	72.0	61%



120°46'W 120°45'W 120°44'W 120°43'W 120°42'W 120°41'W 120°40'W 120°39'W 120°38'W 120°37'W 120°36'W 120°35'W 120°34'W 120°33'W 120°32'W 120°31'W 120°30'W 120°29'W 120°28'W 120°27'W 120°26'W 120°25'W 120°24'W 120°23'W 120°22'W