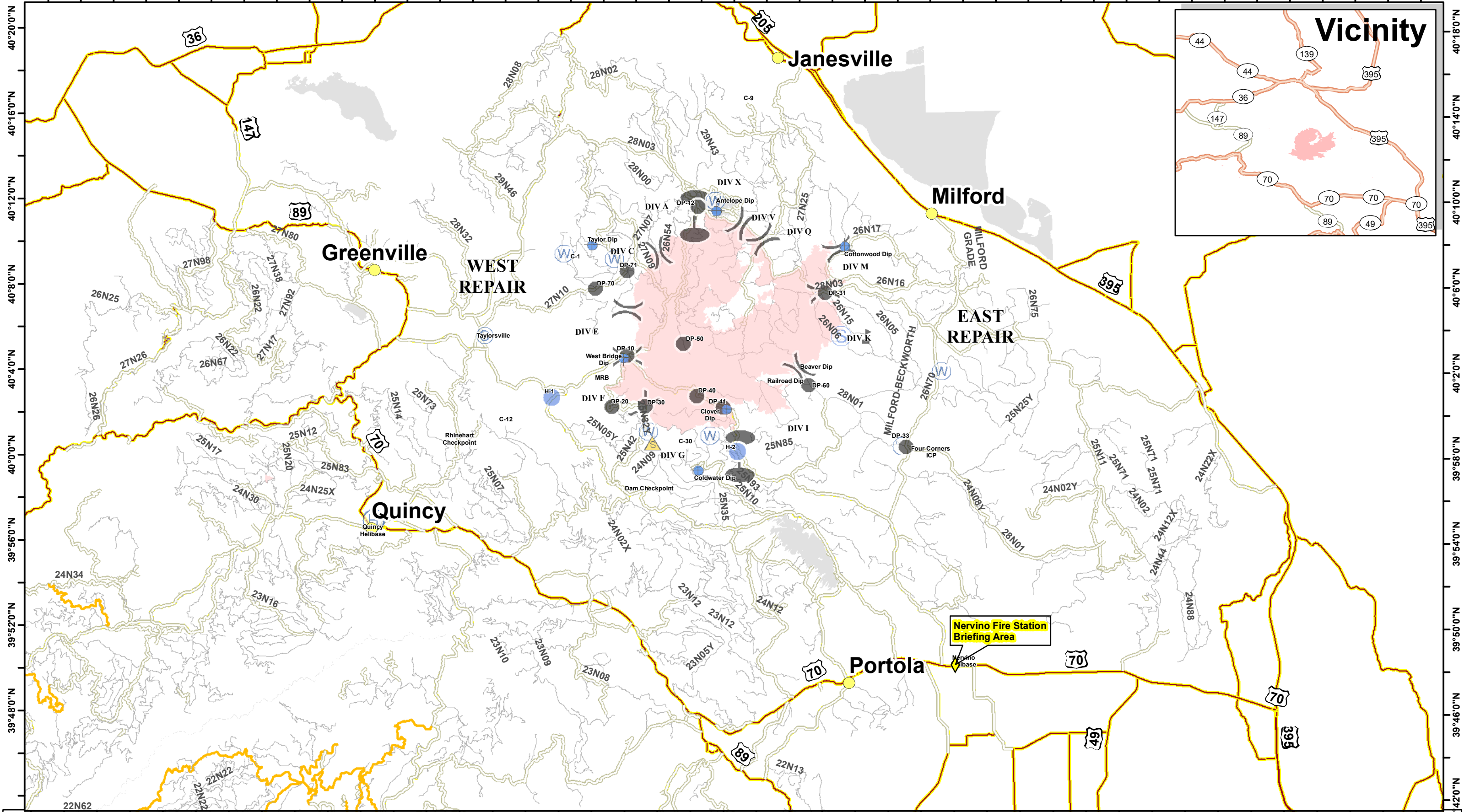


121°16'0"W 121°12'0"W 121°8'0"W 121°4'0"W 121°0'0"W 120°56'0"W 120°52'0"W 120°48'0"W 120°44'0"W 120°40'0"W 120°36'0"W 120°32'0"W 120°28'0"W 120°24'0"W 120°20'0"W 120°16'0"W 120°12'0"W 120°8'0"W 120°4'0"W 120°0'0"W 119°56'0"W 119°52'0"W



121°18'0"W 121°14'0"W 121°10'0"W 121°6'0"W 121°2'0"W 120°58'0"W 120°54'0"W 120°50'0"W 120°46'0"W 120°42'0"W 120°38'0"W 120°34'0"W 120°30'0"W 120°26'0"W 120°22'0"W 120°18'0"W 120°14'0"W 120°10'0"W 120°6'0"W 120°2'0"W 119°58'0"W 119°54'0"W

Transportation
Walker Fire
CA-PNF-001324
09/30/2019



- CITIES.SDC
- C Camp
- Drop Point
- Helispot
- S Staging Area
- Blue at Risk
- + Dip Site
- H Helibase
- ▲ Safety Zone
- W Water Source
- Zone Break
- Division Break
- Wildfire Daily Fire Perimeter

