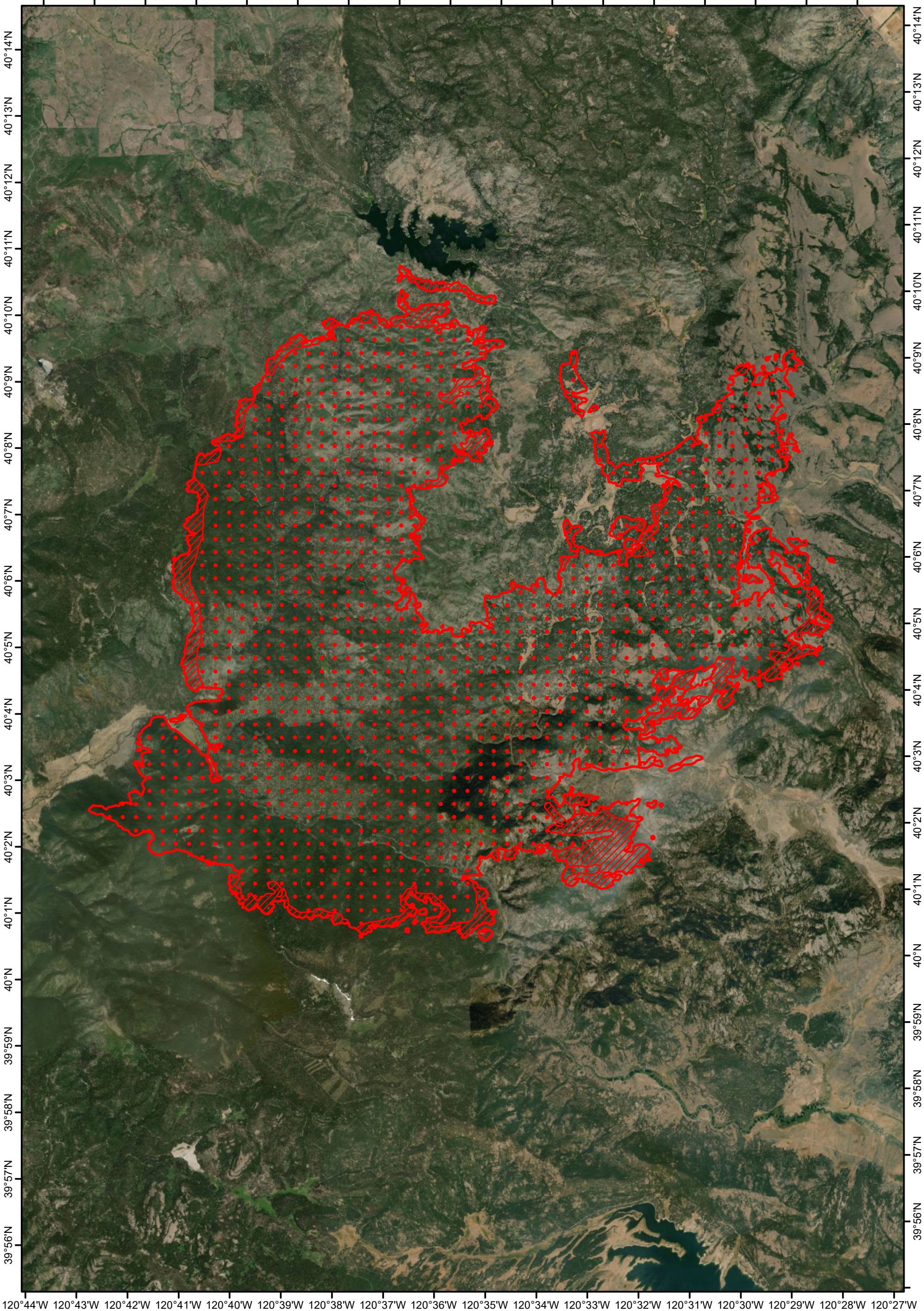


120°43'W 120°42'W 120°41'W 120°40'W 120°39'W 120°38'W 120°37'W 120°36'W 120°35'W 120°34'W 120°33'W 120°32'W 120°31'W 120°30'W 120°29'W 120°28'W 120°27'W

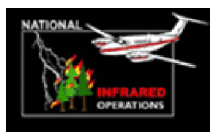


-  Heat Perimeter
-  Intense Heat
-  Scattered Heat
-  Isolated Heat



0 1 2 4 Miles

Walker - Infrared Map
 CA-PNF-001324
 Imagery Date: 20190909 2216 PDT



Infrared Interpreter: Lauren Miller
 NAD83 UTM Zone 10