

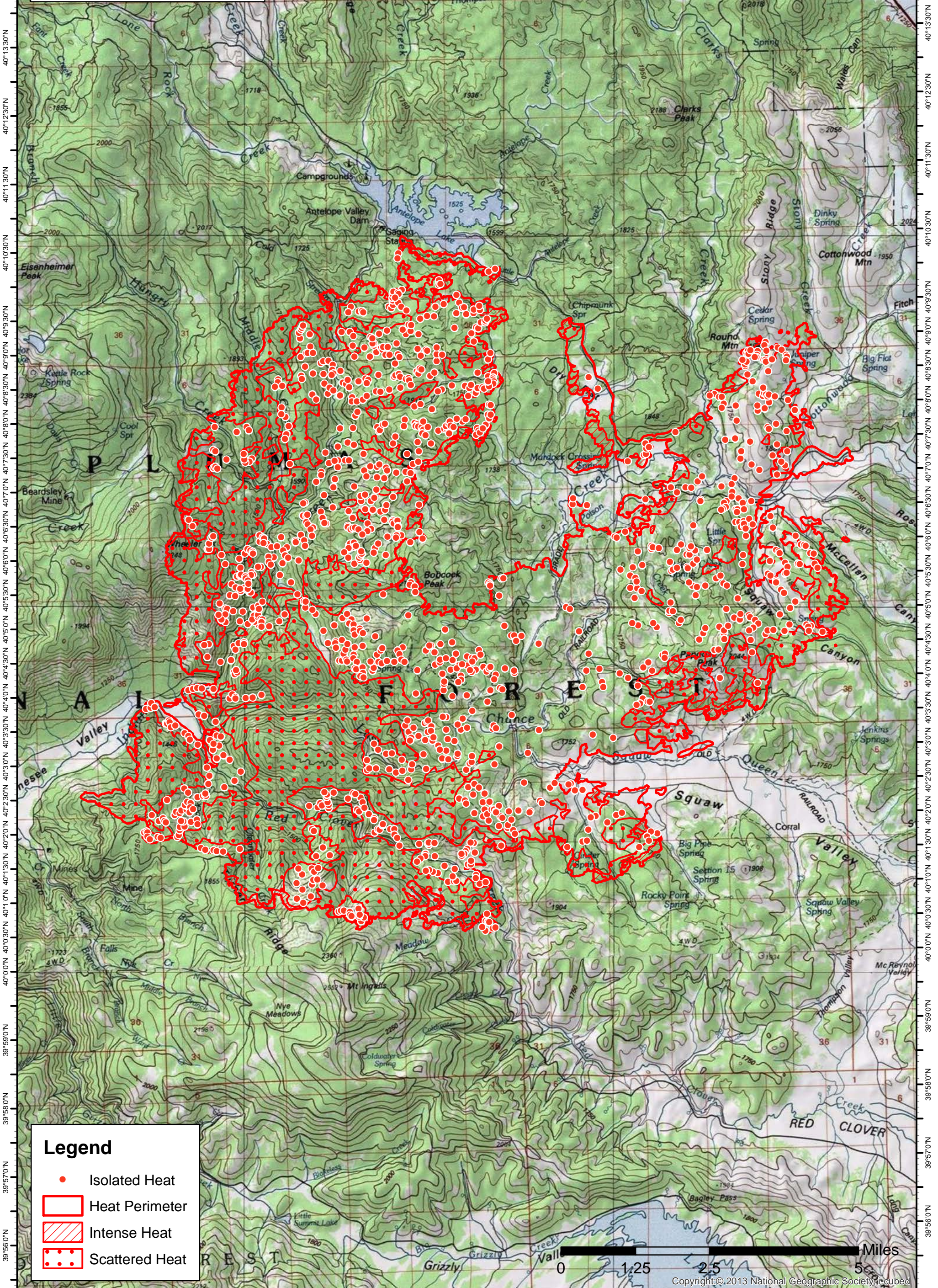


120°42'30"W 120°41'30"W 120°40'30"W 120°39'30"W 120°38'30"W 120°37'30"W 120°36'30"W 120°35'30"W 120°34'30"W 120°33'30"W 120°32'30"W 120°31'30"W 120°30'30"W 120°29'30"W 120°28'30"W 120°27'30"W 120°26'30"W

 Walker Incident
CA-PNF-001324
Infrared Map

Imagery Date: 9/11/2019 @ 2108 PDT

IRIN: Maximillian Wahlberg

120°43'0"W 120°42'0"W 120°41'0"W 120°40'0"W 120°39'0"W 120°38'0"W 120°37'0"W 120°36'0"W 120°35'0"W 120°34'0"W 120°33'0"W 120°32'0"W 120°31'0"W 120°30'0"W 120°29'0"W 120°28'0"W 120°27'0"W

40°15'30"N
40°14'30"N
40°13'30"N
40°12'30"N
40°11'30"N
40°10'30"N
40°9'30"N
40°8'30"N
40°7'30"N
40°6'30"N
40°5'30"N
40°4'30"N
40°3'30"N
40°2'30"N
40°1'30"N
40°0'30"N
39°59'0"N
39°58'0"N
39°57'0"N
39°56'0"N

40°15'30"N
40°14'30"N
40°13'30"N
40°12'30"N
40°11'30"N
40°10'30"N
40°9'30"N
40°8'30"N
40°7'30"N
40°6'30"N
40°5'30"N
40°4'30"N
40°3'30"N
40°2'30"N
40°1'30"N
40°0'30"N
39°59'0"N
39°58'0"N
39°57'0"N
39°56'0"N

Copyright © 2013 National Geographic Society, Inc. Scanned