

120°42'30"W 120°41'30"W 120°40'30"W 120°39'30"W 120°38'30"W 120°37'30"W 120°36'30"W 120°35'30"W 120°34'30"W 120°33'30"W 120°32'30"W 120°31'30"W 120°30'30"W 120°29'30"W 120°28'30"W 120°27'30"W 120°26'30"W


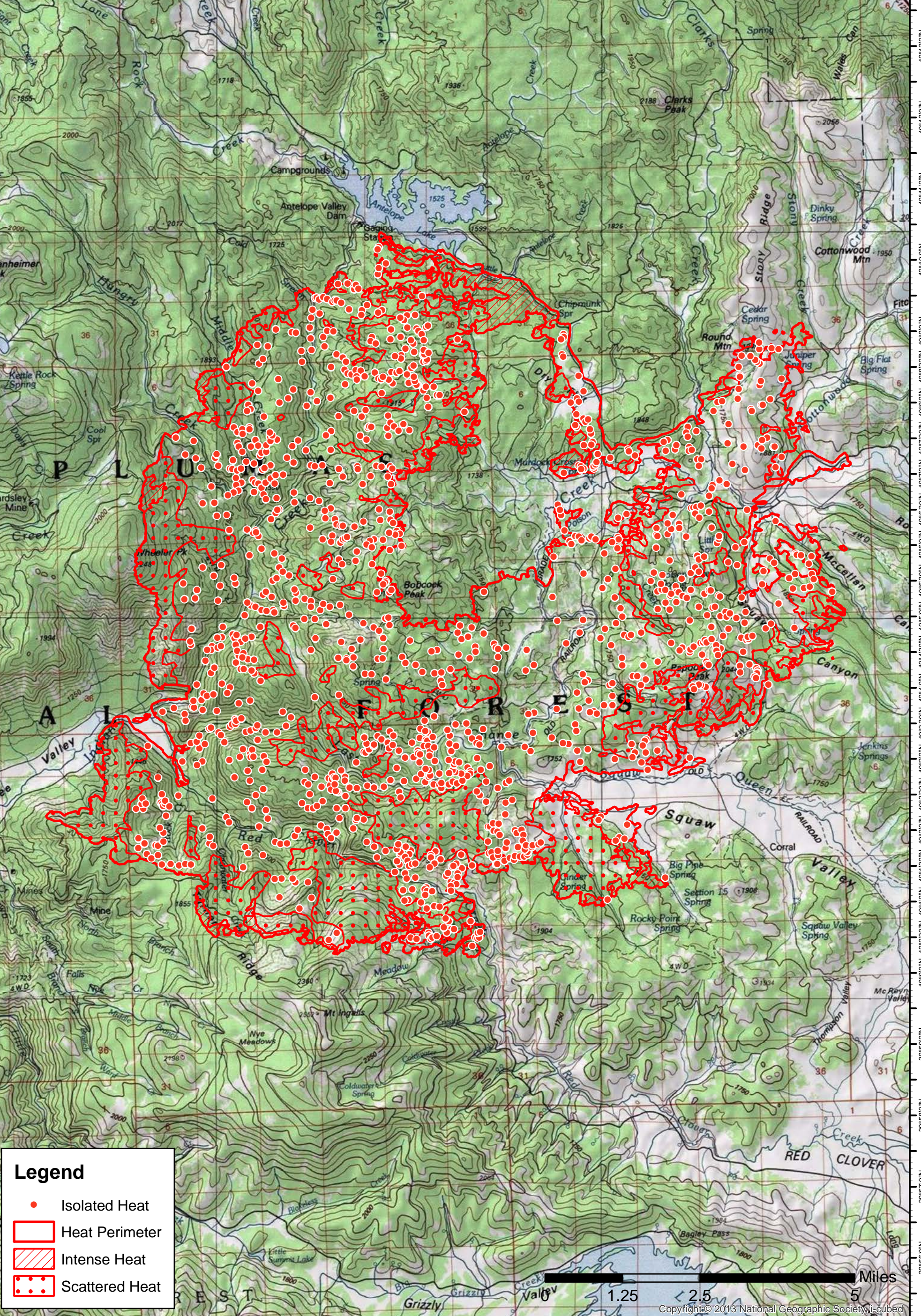
40°15'30"N 40°14'30"N 40°13'30"N 40°12'30"N 40°11'30"N 40°10'30"N 40°9'30"N 40°8'30"N 40°7'30"N 40°6'30"N 40°5'30"N 40°4'30"N 40°3'30"N 40°2'30"N 40°1'30"N 40°0'30"N 39°59'0"N 39°58'0"N 39°57'0"N 39°56'0"N

40°15'0"N 40°14'0"N 40°13'0"N 40°12'0"N 40°11'0"N 40°10'0"N 40°9'0"N 40°8'0"N 40°7'0"N 40°6'0"N 40°5'0"N 40°4'0"N 40°3'0"N 40°2'0"N 40°1'0"N 40°0'0"N 39°59'0"N 39°58'0"N 39°57'0"N 39°56'0"N

**Walker Incident**  
**CA-PNF-001324**  
**Infrared Map**

Imagery Date: 9/12/2019 @ 2224 PDT

IRIN: Maximillian Wahlberg

**Legend**

- Isolated Heat
- Heat Perimeter
- Intense Heat
- Scattered Heat

Miles 1.25 2.5 5

Copyright © 2013 National Geographic Society, i-cubed

120°43'30"W 120°42'30"W 120°41'30"W 120°40'30"W 120°39'30"W 120°38'30"W 120°37'30"W 120°36'30"W 120°35'30"W 120°34'30"W 120°33'30"W 120°32'30"W 120°31'30"W 120°30'30"W 120°29'30"W 120°28'30"W 120°27'30"W