

120°42'30"W 120°41'30"W 120°40'30"W 120°39'30"W 120°38'30"W 120°37'30"W 120°36'30"W 120°35'30"W 120°34'30"W 120°33'30"W 120°32'30"W 120°31'30"W 120°30'30"W 120°29'30"W 120°28'30"W 120°27'30"W 120°26'30"W

40°15'30"N
40°14'30"N
40°13'30"N
40°12'30"N
40°11'30"N
40°10'30"N
40°9'30"N
40°8'30"N
40°7'30"N
40°6'30"N
40°5'30"N
40°4'30"N
40°4'0"N
40°3'30"N
40°3'0"N
40°2'30"N
40°2'0"N
40°1'30"N
40°1'0"N
40°0'30"N
40°0'0"N
39°59'0"N
39°58'0"N
39°57'0"N
39°56'0"N

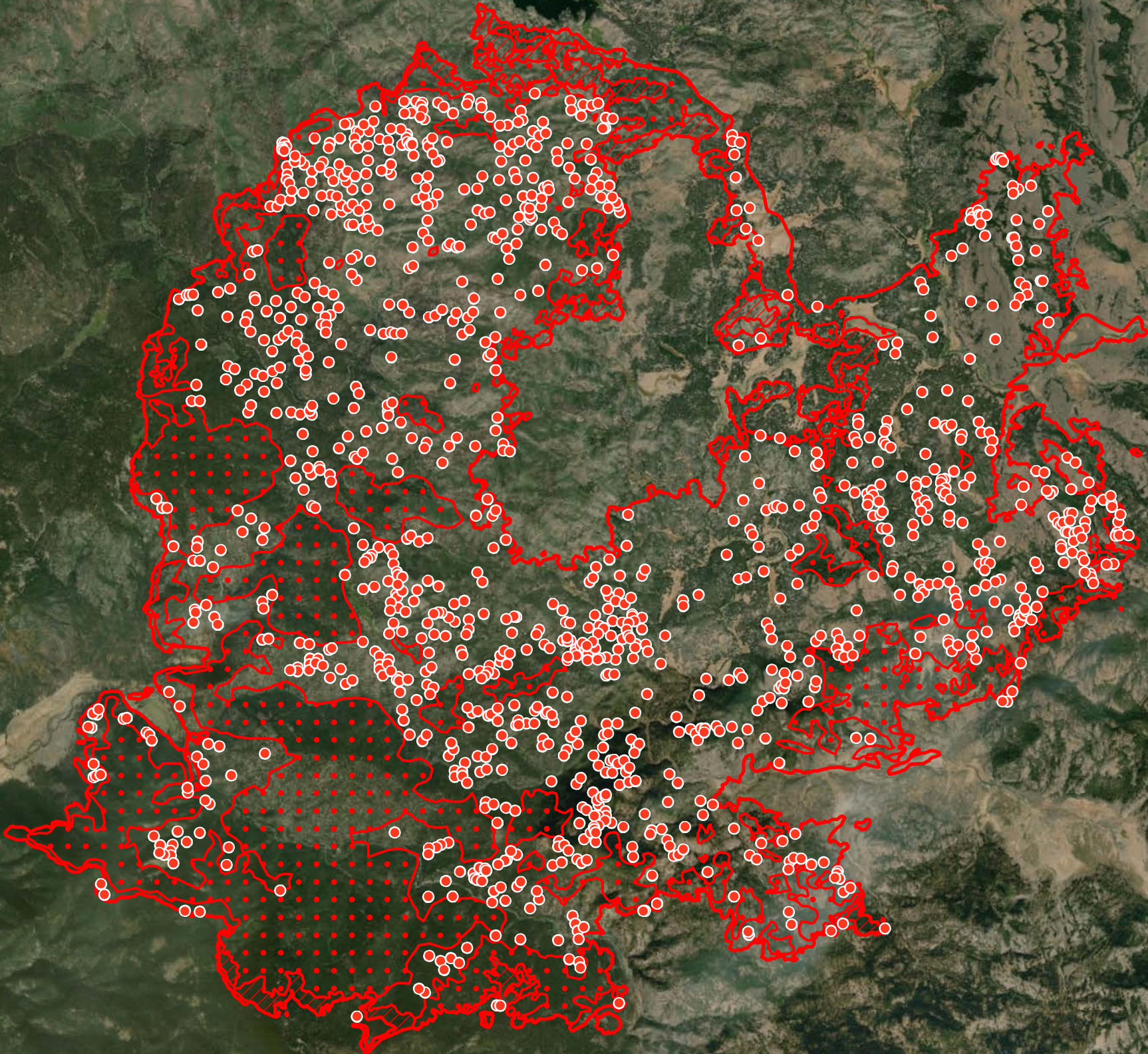
40°15'0"N
40°14'0"N
40°13'0"N
40°12'0"N
40°11'0"N
40°10'0"N
40°9'0"N
40°8'0"N
40°7'0"N
40°6'0"N
40°5'0"N
40°4'0"N
40°3'0"N
40°3'0"N
40°2'0"N
40°2'0"N
40°1'0"N
40°1'0"N
40°0'0"N
39°59'0"N
39°58'0"N
39°57'0"N
39°56'0"N



Walker Incident CA-PNF-001324 Infrared Map

Imagery Date: 9/13/2019 @ 2119 PDT

IRIN: Maximillian Wahlberg



Legend

- Isolated Heat
- Heat Perimeter
- Intense Heat
- Scattered Heat

0 25 50 Miles

Source: Esri, DigitalGlobe, GeoEye, Earthstar Geographics, CNES/Airbus DS, USDA, USGS, AeroGRID, IGN, and the GIS User Community

120°43'30"W 120°42'30"W 120°41'30"W 120°40'30"W 120°39'30"W 120°38'30"W 120°37'30"W 120°36'30"W 120°35'30"W 120°34'30"W 120°33'30"W 120°32'30"W 120°31'30"W 120°30'30"W 120°29'30"W 120°28'30"W 120°27'30"W