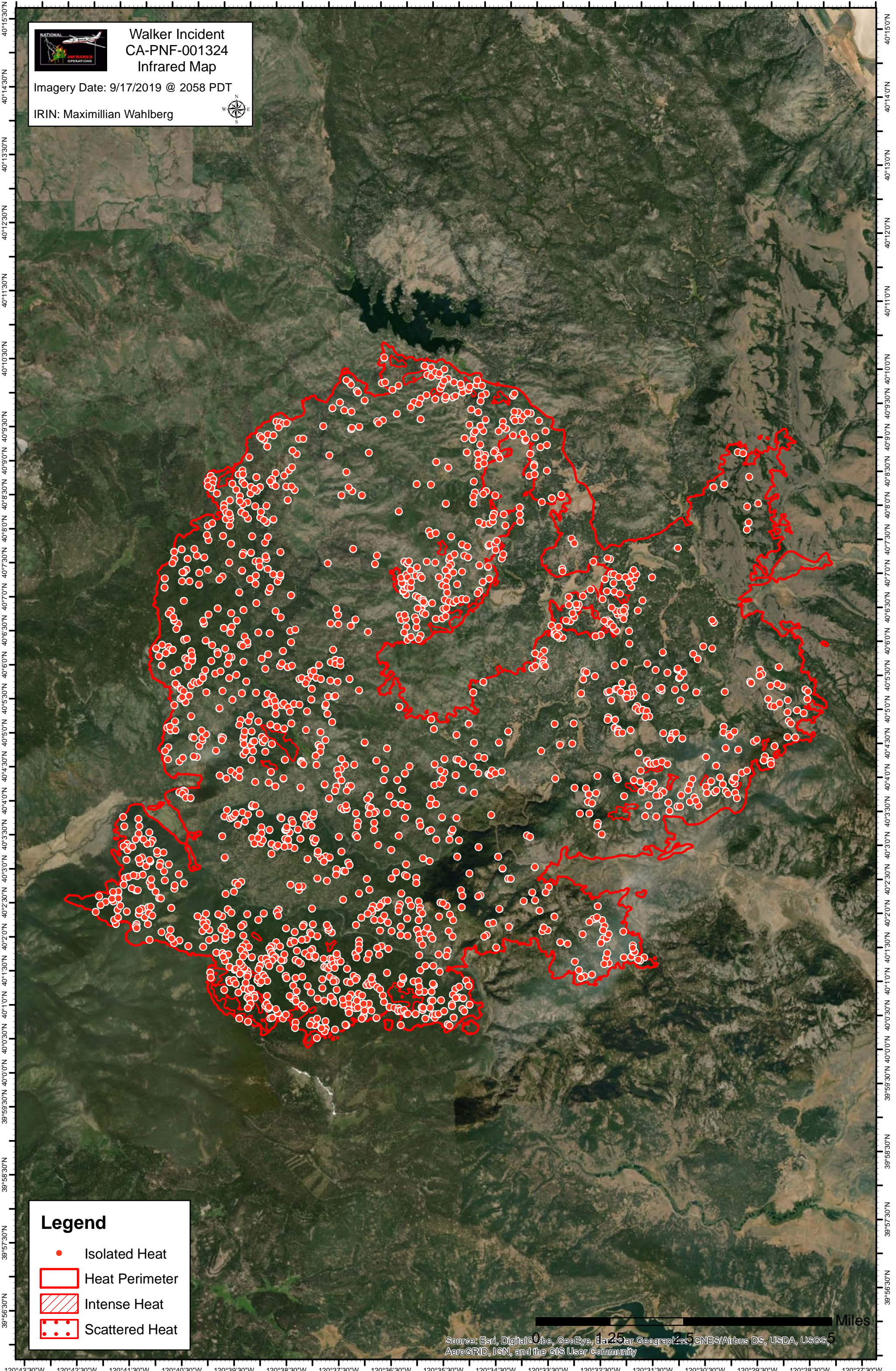




120°42'30"W 120°41'30"W 120°40'30"W 120°39'30"W 120°38'30"W 120°37'30"W 120°36'30"W 120°35'30"W 120°34'30"W 120°33'30"W 120°32'30"W 120°31'30"W 120°30'30"W 120°29'30"W 120°28'30"W 120°27'30"W 120°26'30"W



Walker Incident
CA-PNF-001324
Infrared Map

Imagery Date: 9/17/2019 @ 2058 PDT

IRIN: Maximillian Wahlberg

Legend

- Isolated Heat
- Heat Perimeter
- Intense Heat
- Scattered Heat

0 1 2 3 4 5 Miles

Source: Esri, DigitalGlobe, GeoEye, Earthstar Geographics, CNES/Airbus DS, USDA, USGS, AeroGRID, IGN, and the GIS User Community

120°43'30"W 120°42'30"W 120°41'30"W 120°40'30"W 120°39'30"W 120°38'30"W 120°37'30"W 120°36'30"W 120°35'30"W 120°34'30"W 120°33'30"W 120°32'30"W 120°31'30"W 120°30'30"W 120°29'30"W 120°28'30"W 120°27'30"W