

40°46'N

123°12'W

123°11'W

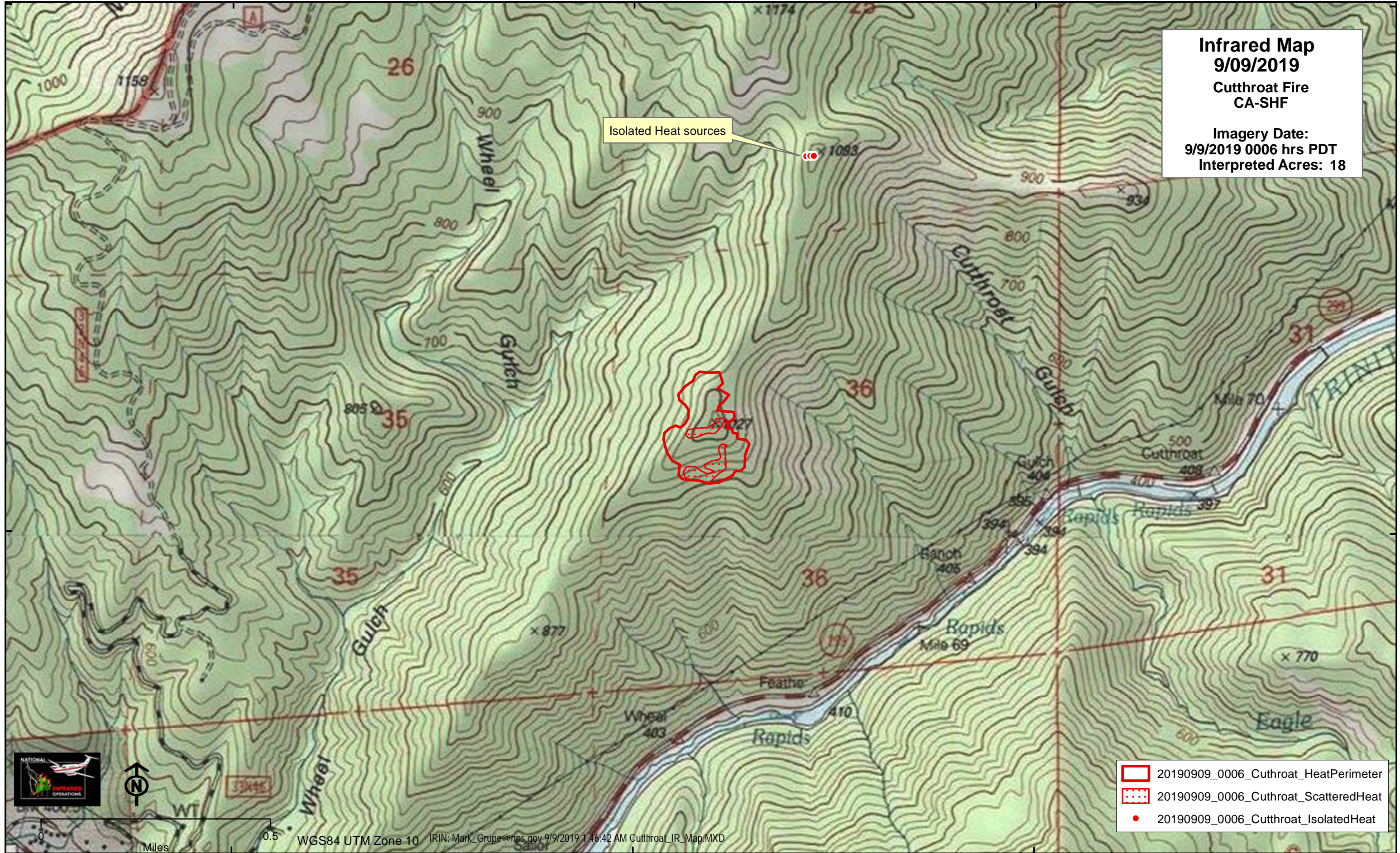
123°10'W

40°46'N

Infrared Map
9/09/2019
Cutthroat Fire
CA-SHF

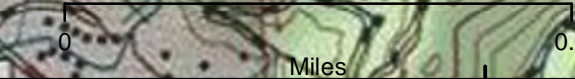
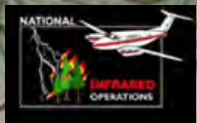
Imagery Date:
9/9/2019 0006 hrs PDT
Interpreted Acres: 18

Isolated Heat sources



40°45'N

40°45'N



WGS84 UTM Zone 10 IRIN: Mark_Grupe@nps.gov 9/9/2019 1:46:42 AM Cutthroat_IR_Map.MXD

123°12'W

123°11'W

123°10'W

- 20190909_0006_Cutthroat_HeatPerimeter
- 20190909_0006_Cutthroat_ScatteredHeat
- 20190909_0006_Cutthroat_IsolatedHeat