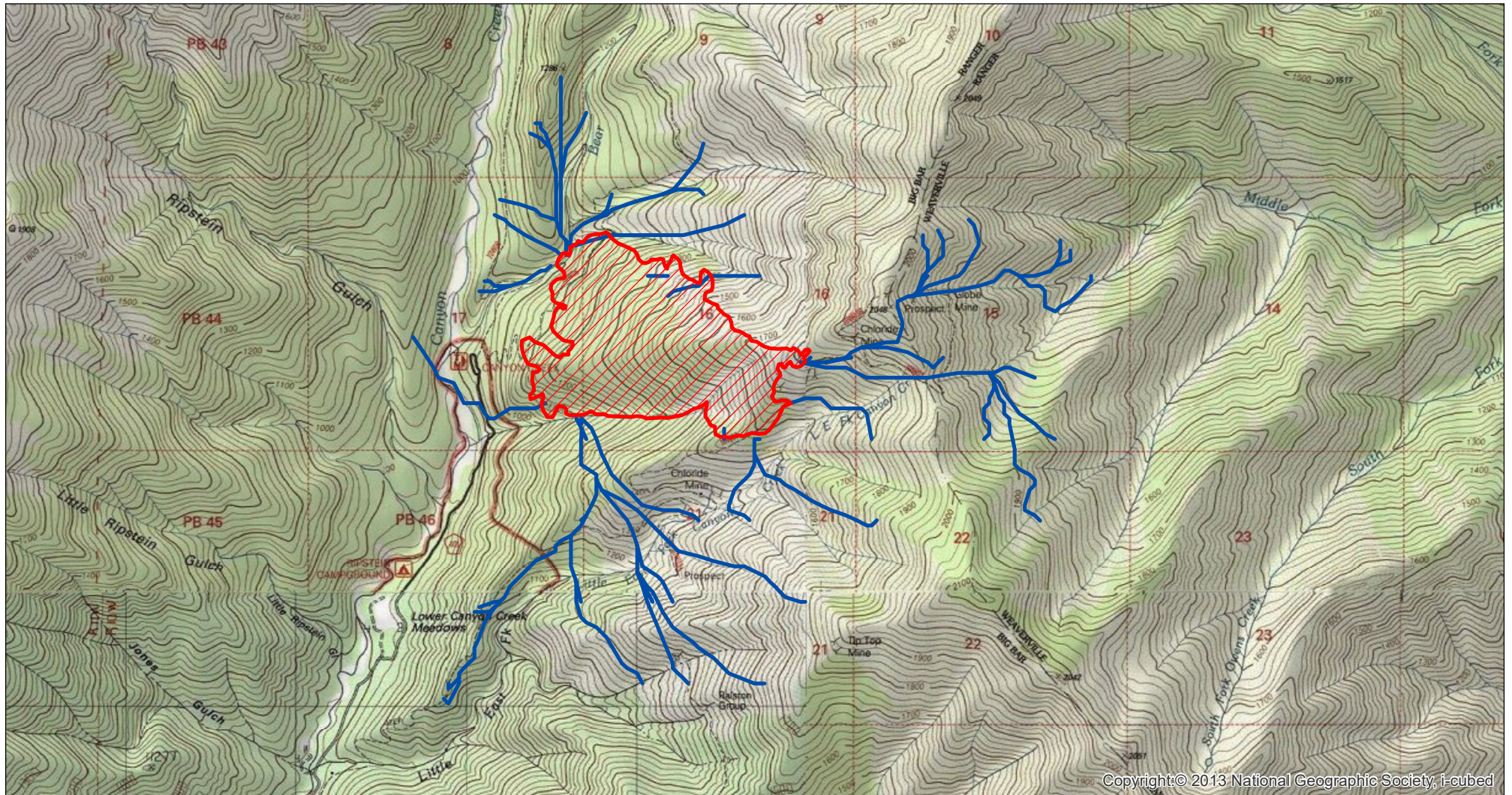






# Middle Fire MTT Major Flow Paths - NW Wind

Trinity River Management Unit  
Shasta-Trinity National Forest



Copyright © 2013 National Geographic Society, i-cubed



-  Middle Heat Perimeter
-  MTT Major Flow Paths - NW Wind

0 0.5 1 2 Miles

9/10/2019

3 day short term fire behavior for the Middle Fire starting 09/08/2019 under a NW wind scenario. Map displays major flow paths from the minimum travel time (MTT) model. Largest growth potential is to the east and south with one major path north along Canyon Creek. Model assumes static weather and fuel moisture conditions and no suppression actions for the length of the simulation.