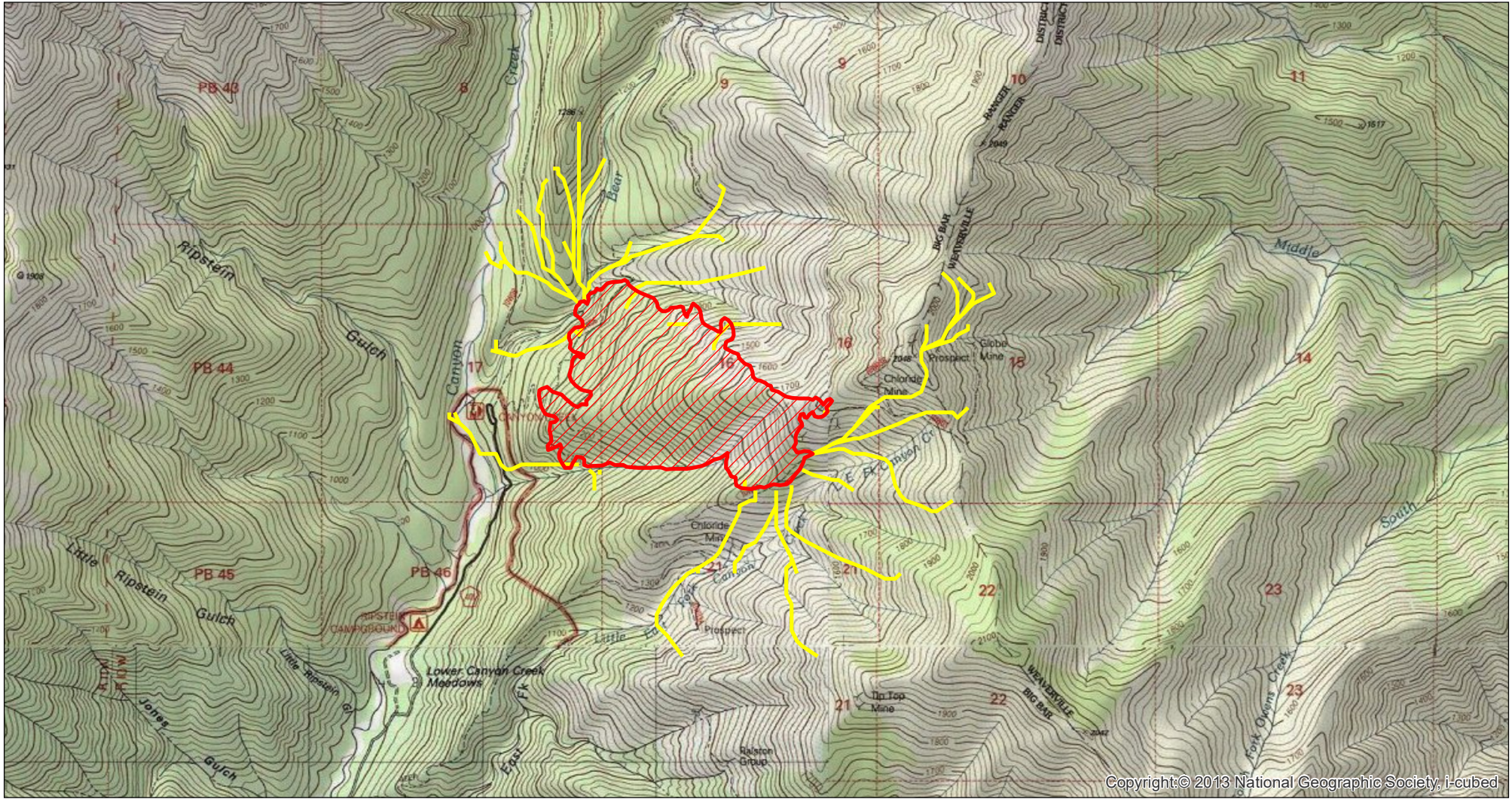




Middle Fire MTT Major Flow Paths - SE Wind

Trinity River Management Unit
Shasta-Trinity National Forest


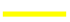


Copyright © 2013 National Geographic Society, i-cubed



0 0.375 0.75 1.5 Miles

9/10/2019

-  Middle Heat Perimeter
-  MTT Major Flow Paths - SE Wind

3 day Short term fire behavior for the Middle Fire starting 09/08/2019 under SE wind scenario. Map displays major flow paths from the minimum travel time (MTT) model. Largest growth potential is to the east and south with one major path north along Canyon Creek. Under a light SE wind scenario, a major flow path appears from the SW corner and follows the ridgeline to the SW, very similar to the path that appears under a NW wind scenario. Model assumes static weather conditions and no suppression actions for the length of the simulation.