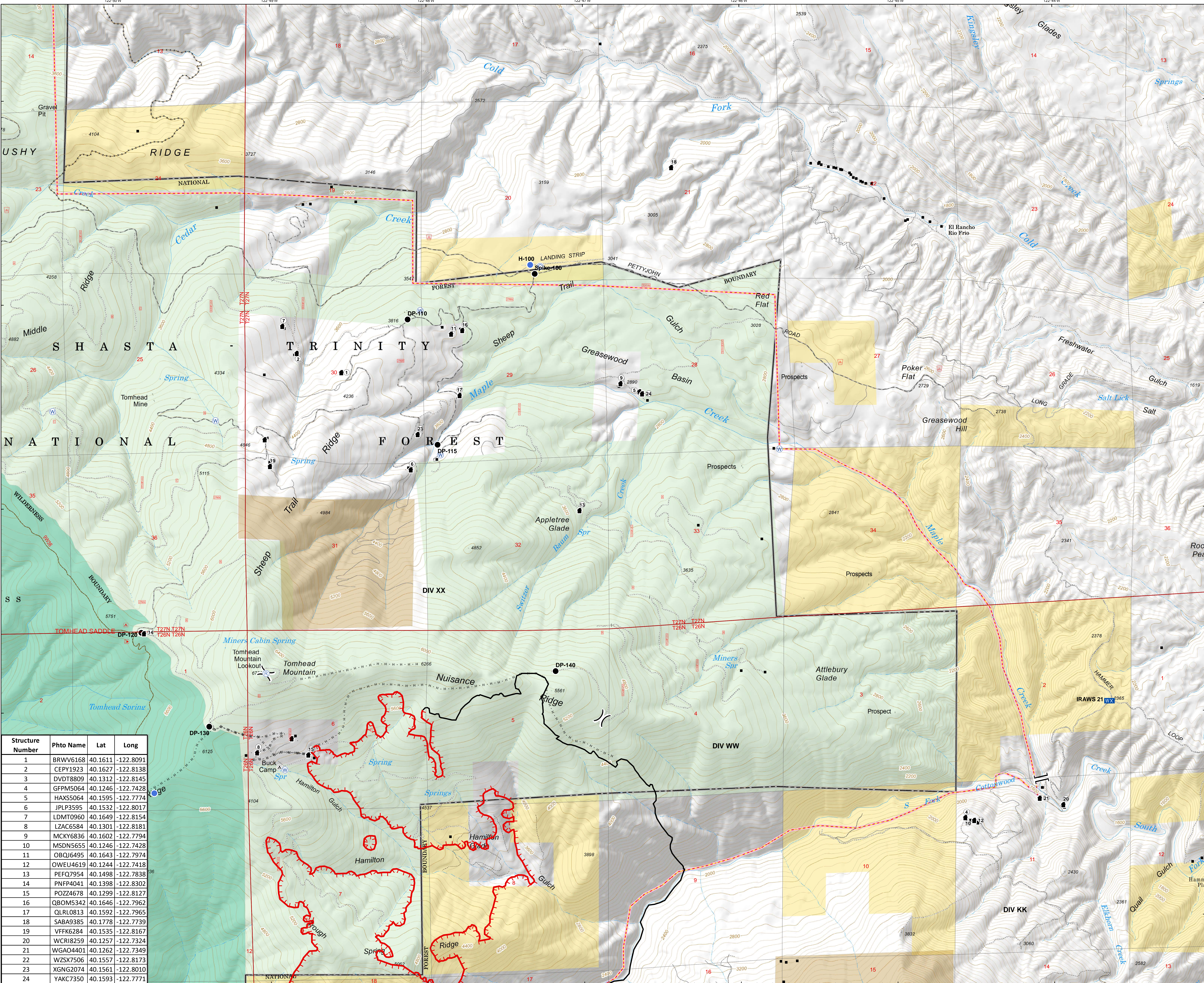


**STRUCTURES  
SOUTH FIRE  
2019-CASHF-1209  
9/13/2019  
3,177 ACRES**

- Structures
- Camp
- Drop Point
- Helispot
- ☒ Mobile Weather Unit
- Ⓜ Repeater
- Ⓜ Water Source
- ⎓ Division Break
- ⎓ Branch Break
- ▭ Administrative Forest
- ▭ USDA Forest Service
- ▭ Crane Mills
- ▭ Wilderness
- ▭ BLM
- ▭ Direct Protection
- ▭ NFST or other federal trail, existing
- ▭ Decommissioned Trail



Structure Number	Photo Name	Lat	Long
1	BRVV6168	40.1611	-122.8091
2	CEPY1923	40.1627	-122.8138
3	DVDT8809	40.1312	-122.8145
4	GFPM5064	40.1246	-122.7428
5	HAX55064	40.1595	-122.7774
6	JPLP3595	40.1532	-122.8017
7	LDMT0960	40.1649	-122.8154
8	LZAC6584	40.1301	-122.8181
9	MCKY6836	40.1602	-122.7794
10	MSDN5655	40.1246	-122.7428
11	OBQJ6495	40.1643	-122.7974
12	OWEU4619	40.1244	-122.7418
13	PEFQ7954	40.1498	-122.7838
14	PNFP4041	40.1398	-122.8302
15	POZZ4678	40.1299	-122.8127
16	QBOM5342	40.1646	-122.7962
17	QLRL0813	40.1592	-122.7965
18	SABA9385	40.1778	-122.7739
19	VFFK6284	40.1535	-122.8167
20	WCRI8259	40.1257	-122.7324
21	WGAQ4401	40.1262	-122.7349
22	WZSX7506	40.1557	-122.8173
23	XGNG2074	40.1561	-122.8010
24	YAKC7350	40.1593	-122.7771