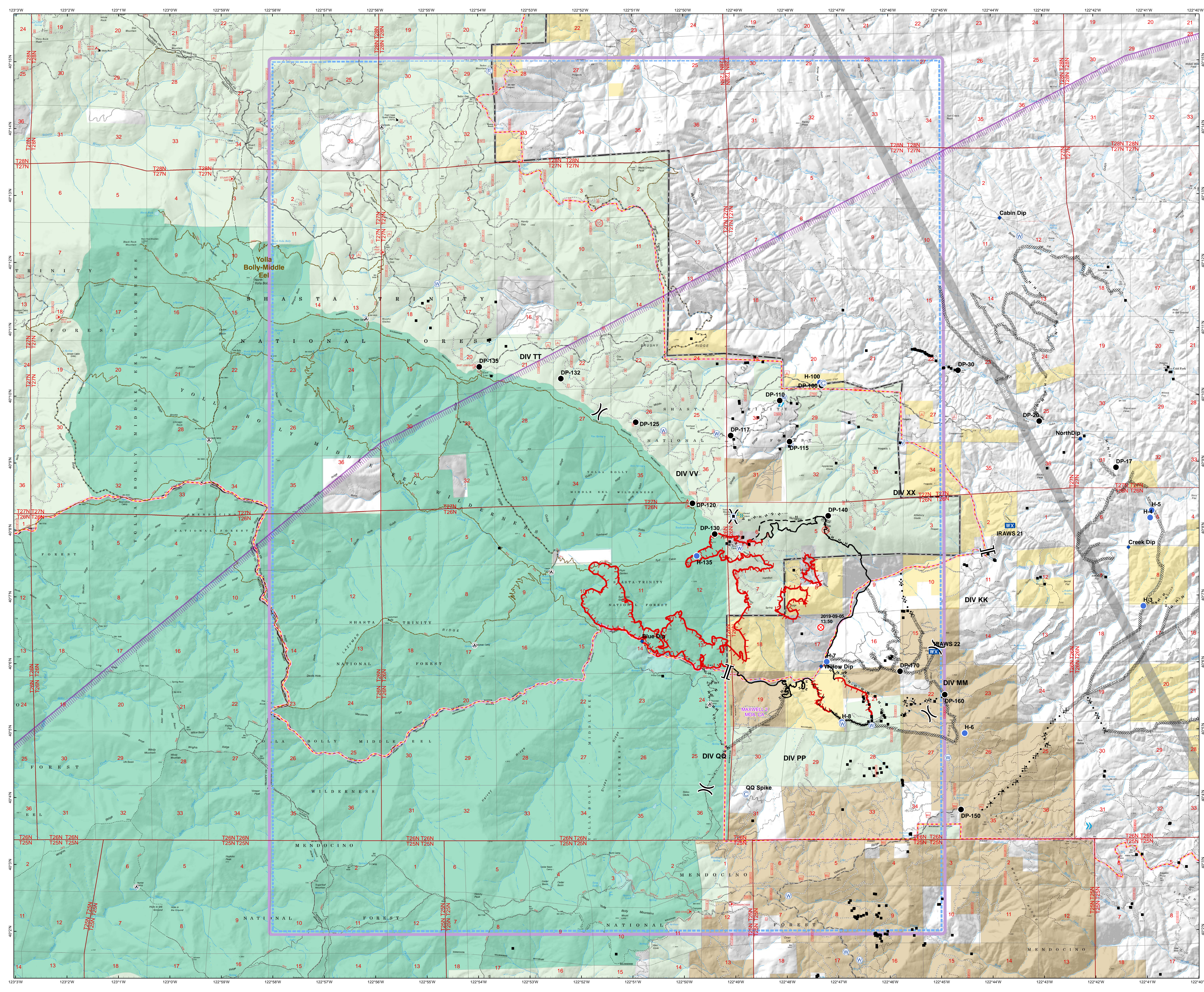
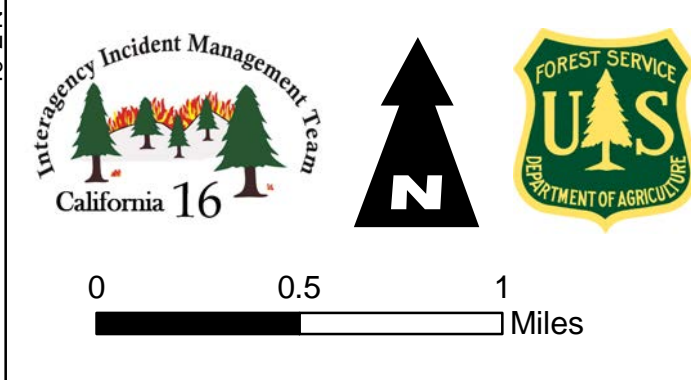


TFR  
 SOUTH FIRE  
 2019-CASHF-1209  
 9/14/2019  
 4,094

South Fire Perimeter as of 9/13 @ 2049 hrs

- Structures
- ⊙ Camp
- Drop Point
- ⊙ Fire Origin
- ⊙ Helispot
- ⊙ Mobile Weather Unit
- ⊙ Repeater
- ⊙ Water Source
- ⊙ Division Break
- ⊙ Branch Break
- ⊙ Completed Dozer Line
- ⊙ Completed Hand Line
- ⊙ Proposed Dozer Line
- ⊙ Ridge/Geographic Feature
- ⊙ Tower
- ⊙ Jettison
- ⊙ 5 76-100 ft
- ⊙ Military Training Route
- ⊙ AviationObstacle\_Pt...
- ⊙ M
- ⊙ Administrative Forest
- ⊙ USDA Forest Service
- ⊙ Crane Mills
- ⊙ Wilderness
- ⊙ BLM
- ⊙ Direct Protection Area
- ⊙ NFST or other federal trail, existing
- ⊙ Decommissioned Trail

Map Label	Latitude	Longitude
Spike-100	40° 10.149' N	122° 47.309' W
DP-10	40° 7.158' N	40° 7.158' W
DP-100	40° 10.149' N	122° 47.18518' W
DP-110	40° 9.927' N	122° 48.121' W
DP-115	40° 9.312' N	122° 47.932' W
DP-117	40° 9.404' N	122° 49.079' W
DP-12	40° 2.438' N	40° 2.438' W
DP-120	40° 8.393' N	122° 49.826' W
DP-125	40° 9.607' N	122° 50.926' W
DP-130	40° 7.932' N	122° 49.394' W
DP-132	40° 10.260' N	122° 52.384' W
DP-135	40° 10.437' N	122° 53.976' W
DP-140	40° 8.201' N	122° 47.181' W
DP-15	40° 2.235' N	40° 2.235' W
DP-150	40° 3.806' N	40° 3.806' W
DP-160	40° 5.523' N	40° 5.523' W
DP-17	40° 8.916' N	40° 8.916' W
DP-170	40° 5.874' N	40° 5.874' W
DP-20	40° 9.610' N	40° 9.610' W
DP-30	40° 10.373' N	40° 10.373' W
DP-40	40° 9.787' N	40° 9.787' W
DP-50	40° 7.498' N	40° 7.498' W
H-1	40° 9.007' N	40° 9.007' W
H-100	40° 10.193' N	40° 10.193' W
H-100	40° 10.193' N	122° 47.337' W
H-135	40° 7.606' N	122° 49.745' W
H-3	40° 6.841' N	40° 6.841' W
H-4	40° 8.161' N	40° 8.161' W
H-5	40° 8.271' N	40° 8.271' W
H-6	40° 4.948' N	40° 4.948' W
H-7	40° 6.020' N	40° 6.020' W
H-8	40° 5.115' N	40° 5.115' W
Blue Dip	40° 6.330' N	40° 6.330' W
Cabin Dip	40° 12.647' N	40° 12.647' W
Creek Dip	40° 7.702' N	40° 7.702' W
East Dip	40° 10.000' N	40° 10.000' W
Green Dip	40° 7.420' N	40° 7.420' W
NorthDip	40° 9.340' N	40° 9.340' W
Willow Dip	40° 5.951' N	40° 5.951' W
IRAWS 21	40° 8.048' N	122° 48.647' W
IRAWS 22	40° 6.167' N	122° 45.135' W
QQ Spike	40° 4.044' N	122° 48.797' W



123°3'W 123°2'W 123°1'W 123°0'W 122°59'W 122°58'W 122°57'W 122°56'W 122°55'W 122°54'W 122°53'W 122°52'W 122°51'W 122°50'W 122°49'W 122°48'W 122°47'W 122°46'W 122°45'W 122°44'W 122°43'W 122°42'W 122°41'W 122°40'W