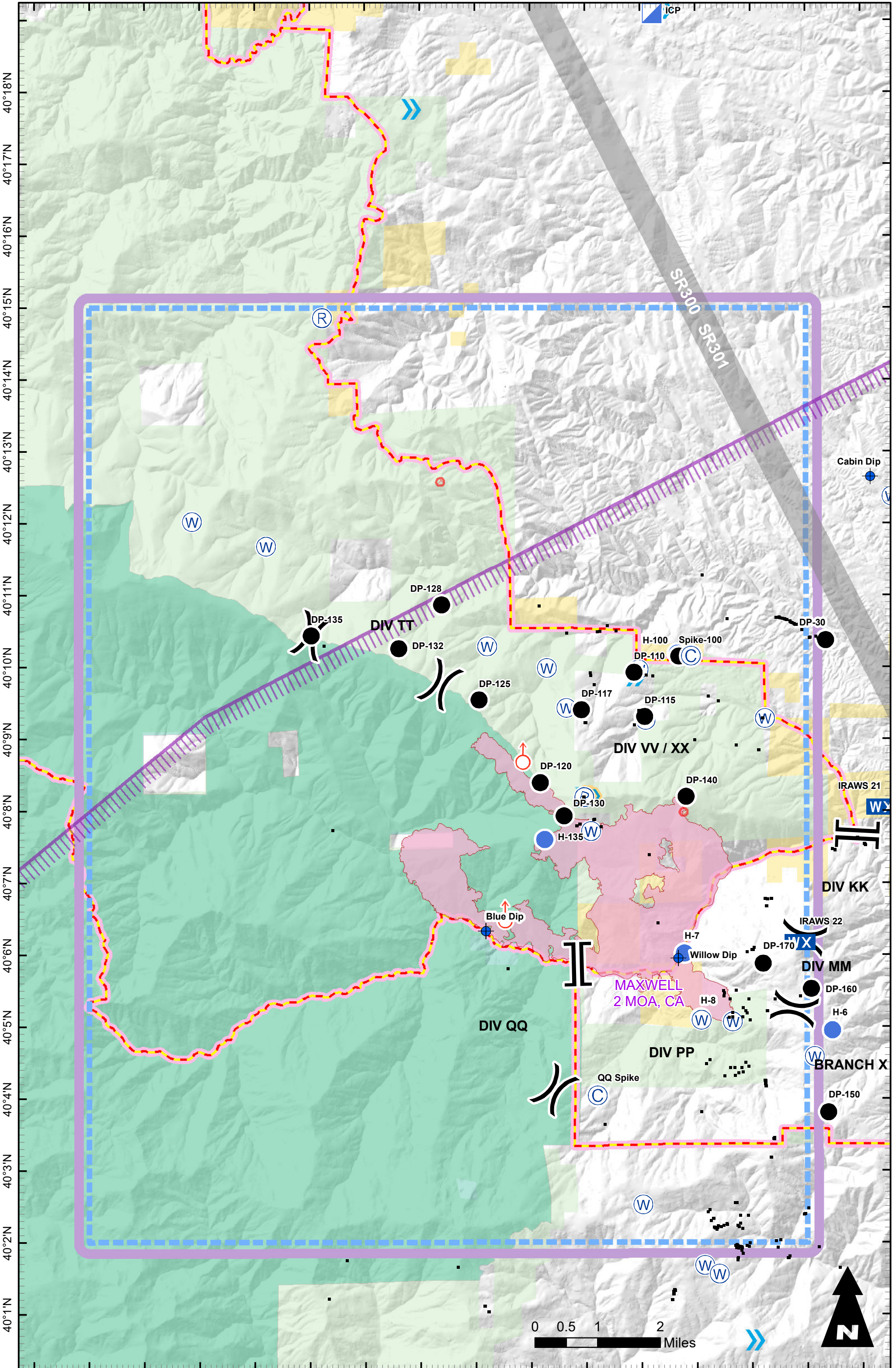


122°59'W 122°58'W 122°57'W 122°56'W 122°55'W 122°54'W 122°53'W 122°52'W 122°51'W 122°50'W 122°49'W 122°48'W 122°47'W 122°46'W 122°45'W 122°44'W



122°59'W 122°58'W 122°57'W 122°56'W 122°55'W 122°54'W 122°53'W 122°52'W 122°51'W 122°50'W 122°49'W 122°48'W 122°47'W 122°46'W 122°45'W 122°44'W

Pilot Map South Fire 2019-CASHF-1209 9/17/2019 5,192 acres as of 9/15 @ 19:43 hrs



Legend

- TFR
- Direct Protection Area
- HazardType**
- Tower
- HazardType**
- Jettison
- Aerial Obstacles**
- AGL_RngSrt**
- 5 76-100 ft
- Military Training Route
- AviationObstacle_Pt_HSIP2019_LndMobilePrivTransTwr
- Aviation Activity: Type M
- USDA Forest Service
- Wilderness
- Wildfire Daily Fire Perimeter
- Camp
- Drop Point
- Helispot
- Mobile Weather Unit
- Repeater
- Water Source
- Division Break
- Branch Break
- Structures



Map Label	Latitude	Longitude
ICP	40° 19.092' N	122° 47.775' W
Spike-100	40° 10.149' N	122° 47.309' W
DP-10	40° 7.158' N	40° 7.158' N
DP-100	40° 10.149' N	122° 47' 18.518" W
DP-110	40° 9.927' N	122° 48.121' W
DP-115	40° 9.312' N	122° 47.932' W
DP-117	40° 9.404' N	122° 49.079' W
DP-12	40° 2.438' N	40° 2.438' N
DP-120	40° 8.393' N	122° 49.826' W
DP-125	40° 9.607' N	122° 50.926' W
DP-128	40° 10.867' N	122° 51.61' W
DP-130	40° 7.932' N	122° 49.394' W
DP-132	40° 10.260' N	122° 52.384' W
DP-135	40° 10.437' N	122° 53.976' W
DP-140	40° 8.201' N	122° 47.181' W
DP-15	40° 2.235' N	40° 2.235' N
DP-150	40° 3.806' N	40° 3.806' N
DP-160	40° 5.523' N	40° 5.523' N
DP-17	40° 8.916' N	40° 8.916' N
DP-170	40° 5.874' N	40° 5.874' N
DP-20	40° 9.610' N	40° 9.610' N
DP-30	40° 10.373' N	40° 10.373' N
DP-40	40° 9.787' N	40° 9.787' N
DP-50	40° 7.498' N	40° 7.498' N
H-1	40° 9.020' N	40° 9.020' N
H-100	40° 10.193' N	40° 10.193' N
H-100	40° 10.193' N	122° 47.337' W
H-135	40° 7.606' N	122° 49.745' W
H-3	40° 6.841' N	40° 6.841' N
H-4	40° 8.161' N	40° 8.161' N
H-5	40° 8.271' N	40° 8.271' N
H-6	40° 4.948' N	40° 4.948' N
H-7	40° 6.020' N	40° 6.020' N
H-8	40° 5.115' N	40° 5.115' N
Blue Dip	40° 6.330' N	40° 6.330' N
Cabin Dip	40° 12.647' N	40° 12.647' N
Creek Dip	40° 7.720' N	40° 7.720' N
East Dip	40° 10.000' N	40° 10.000' N
Green Dip	40° 7.420' N	40° 7.420' N
NorthDip	40° 9.340' N	40° 9.340' N
Willow Dip	40° 5.951' N	40° 5.951' N
IRAWS 21	40° 8.048' N	122° 43.647' W
IRAWS 22	40° 6.167' N	122° 45.135' W
QQ Spike	40° 4.044' N	122° 48.797' W