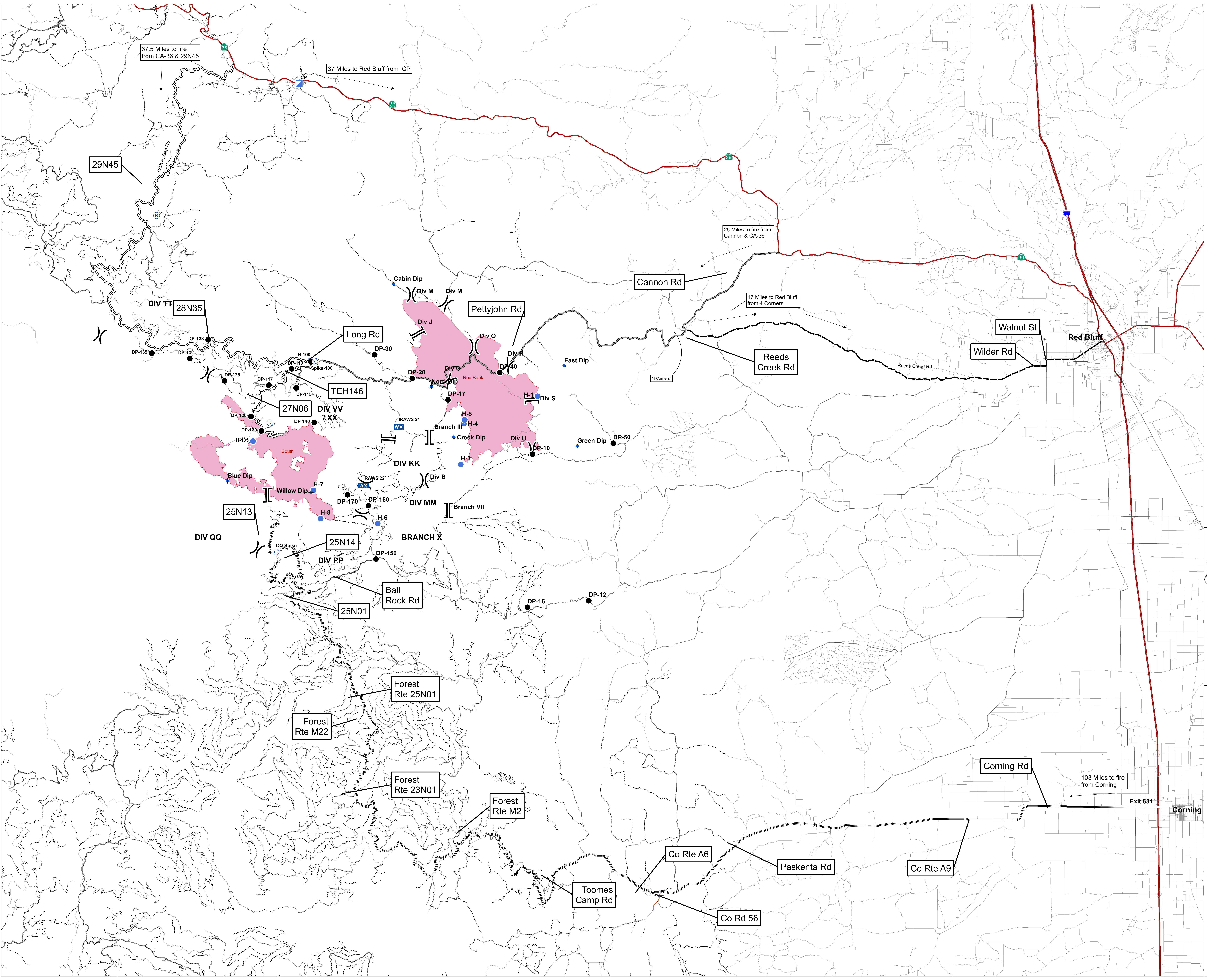


- Ⓢ Camp
- ◆ Dip Site
- Drop Point
- Helispot
- ▣ Incident Command Post
- ☒ Mobile Weather Unit
- Ⓡ Repeater
- ) Division Break
- || Branch Break
- ◆ Dip Site
- Drop Point
- Helispot
- ) Division Break
- || Branch Break
- DivisionL...
- East Route
- Emergency Route
- West Route
- South Route

South Fire Location



0 1.25 2.5 Miles



29N45

37.5 Miles to fire from CA-36 & 29N45

37 Miles to Red Bluff from ICP

25 Miles to fire from Cannon & CA-36

17 Miles to Red Bluff from 4 Corners

103 Miles to fire from Corning

DIV TT

28N35

TEH146

27N06

25N13

25N14

25N01

Forest Rte 25N01

Forest Rte M22

Forest Rte 23N01

Forest Rte M2

Co Rte A6

Co Rd 56

Co Rte A9

Corning Rd

Exit 631

Corning

Cannon Rd

Pettyjohn Rd

Long Rd

Reeds Creek Rd

Wilder Rd

Walnut St

Red Bluff

Ball Rock Rd

Forest Rte 23N01

Forest Rte M2

Co Rte A6

Paskenta Rd

Toomes Camp Rd

DIV TT

27N06

25N13

25N14

25N01

Forest Rte 25N01

Forest Rte M22

Forest Rte 23N01

Forest Rte M2

Co Rte A6

Co Rd 56

Co Rte A9

Corning Rd

Exit 631

Corning

Cannon Rd

Pettyjohn Rd

Long Rd

Reeds Creek Rd

Wilder Rd

Walnut St

Red Bluff

Ball Rock Rd

Forest Rte 23N01

Forest Rte M2

Co Rte A6

Paskenta Rd

Toomes Camp Rd