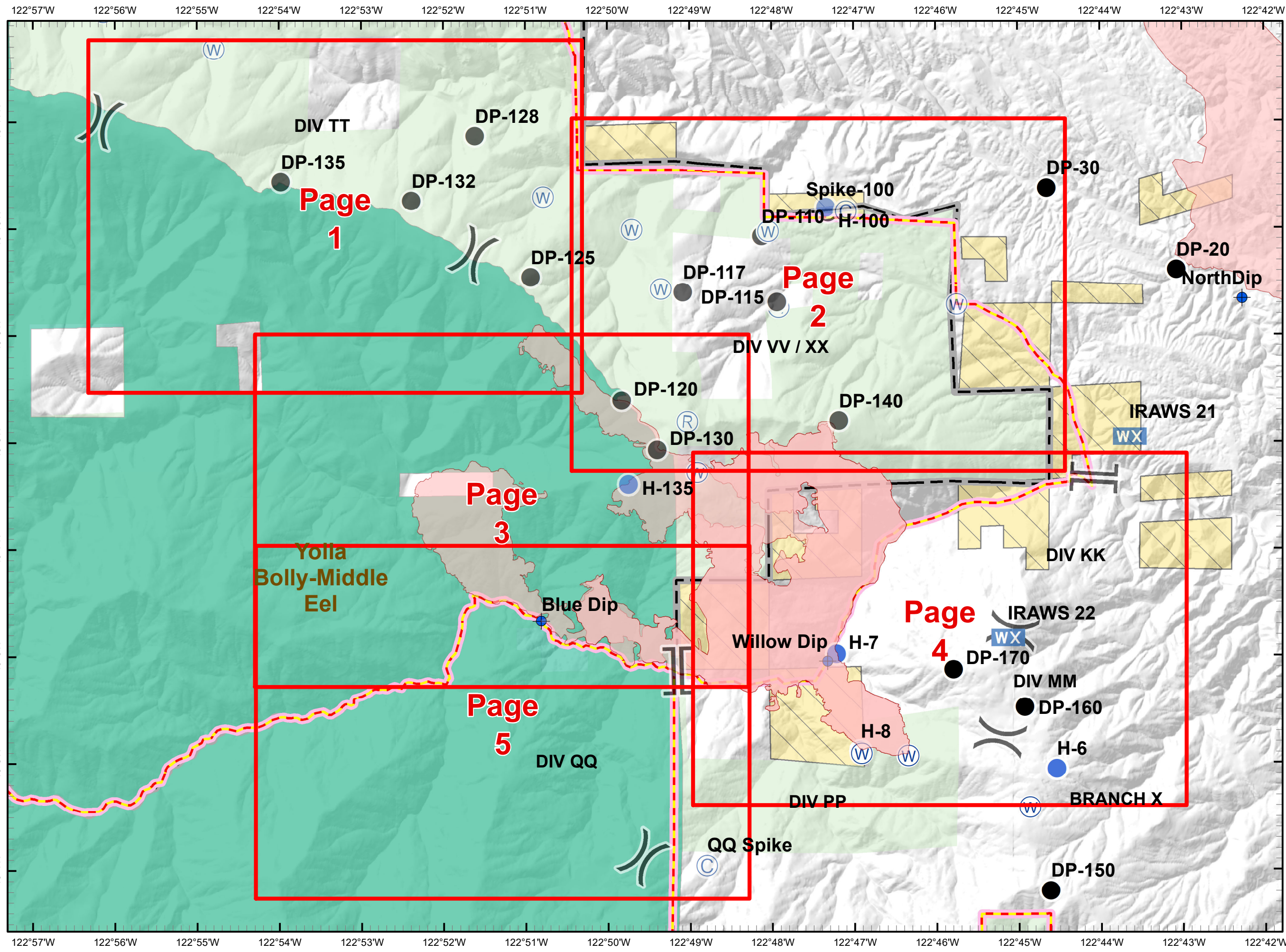
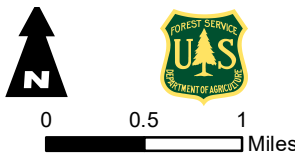


IAP INDEX MAP  
 SOUTH FIRE  
 2019-CASHF-1209  
 9/20/2019  
 5,203 ACRES

Fire Perimeter as of 9/17 @ 1938



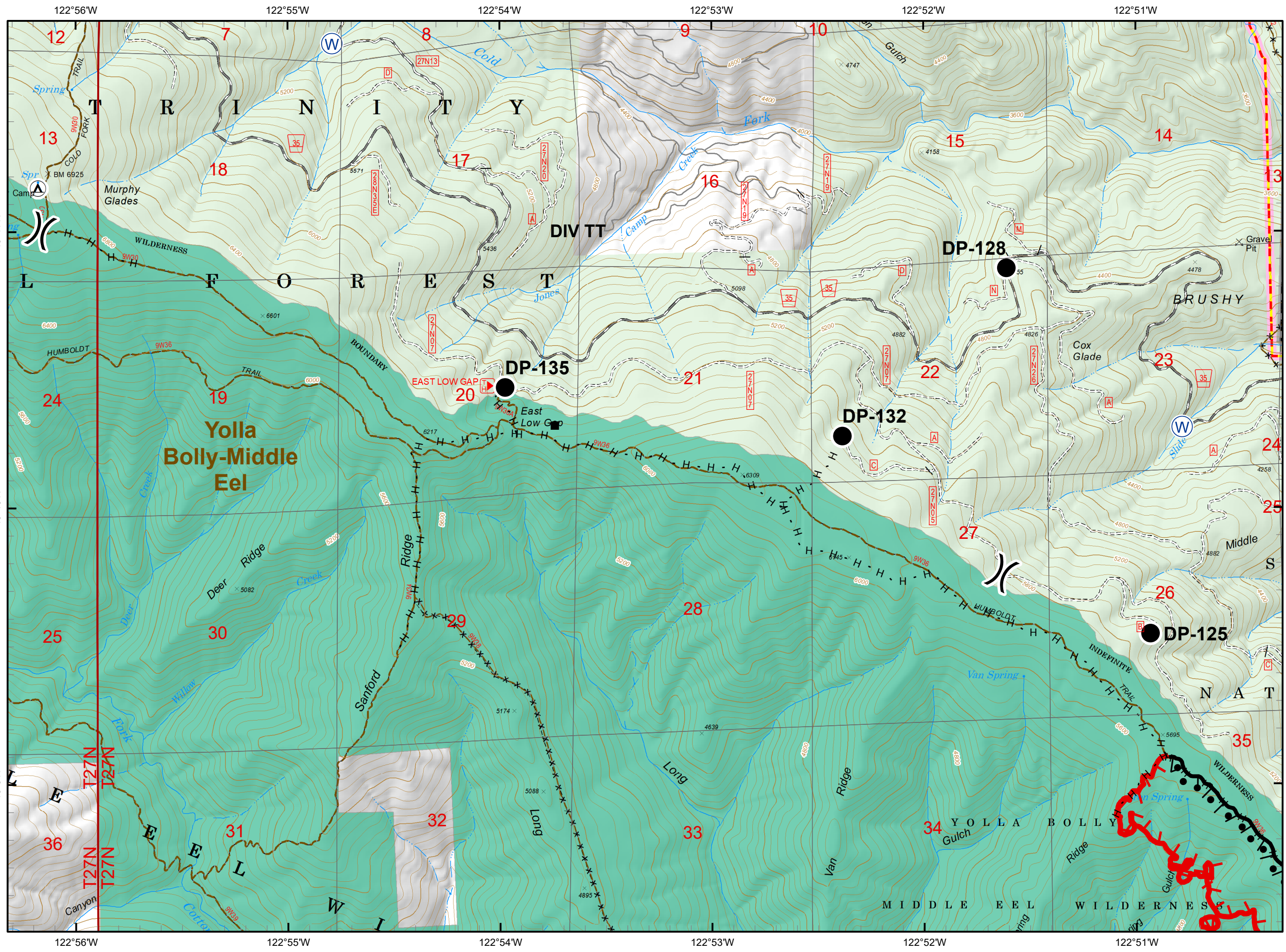
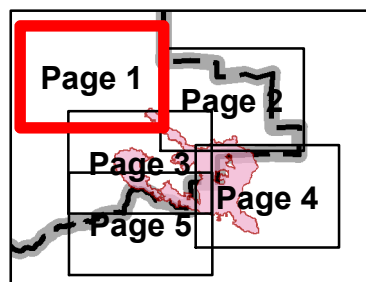
- Camp
- Dip Site
- Drop Point
- Helispot
- Mobile Weather Unit
- Repeater
- Water Source
- Division Break
- Branch Break
- Direct Protection Area
- Administrative Forest
- Wilderness
- BLM
- USDA Forest Service



Fire Perimeter as of 9/17 @ 1938

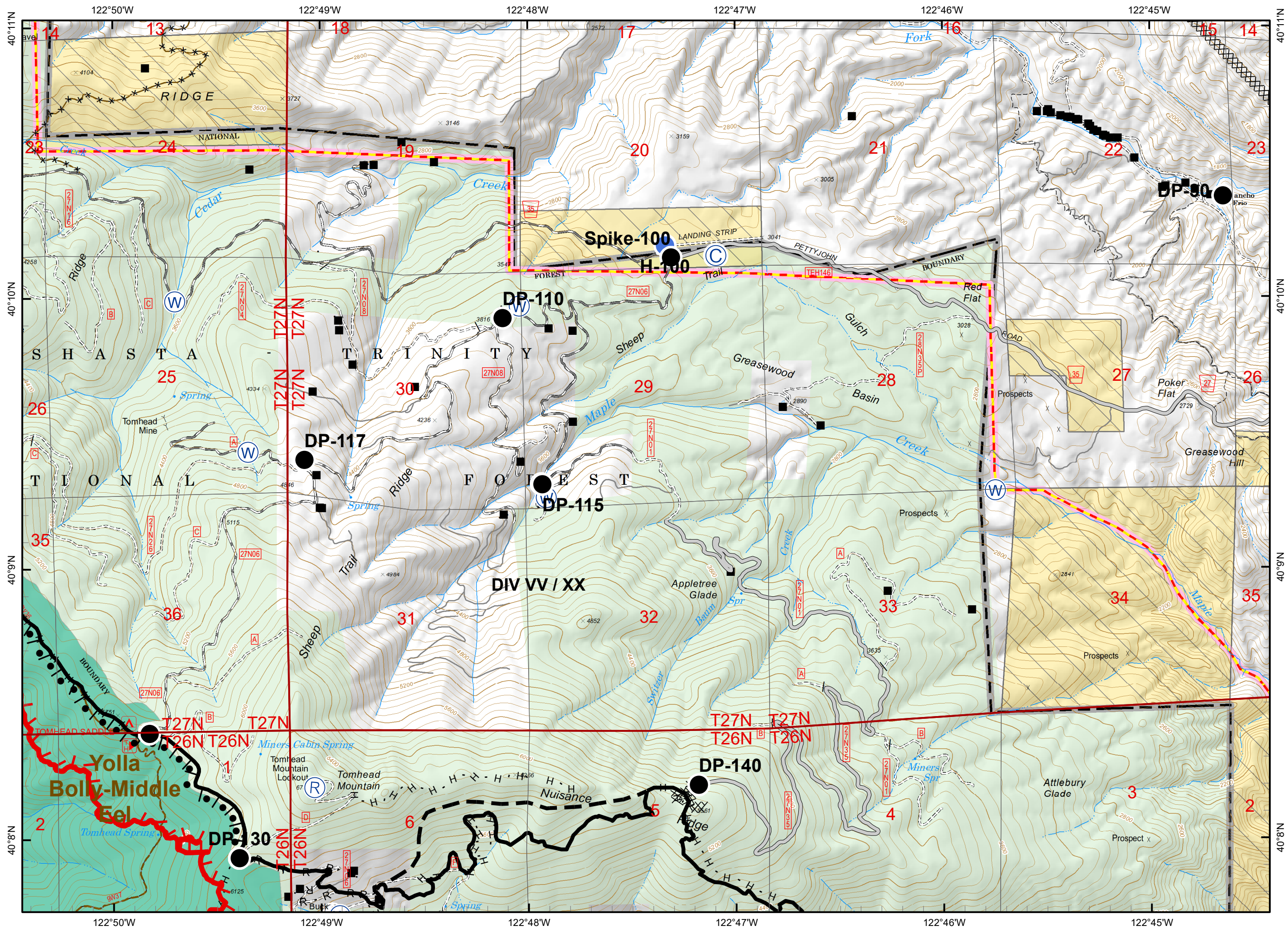
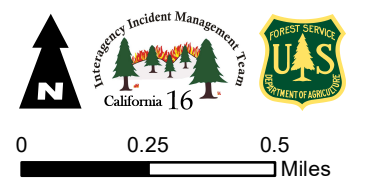
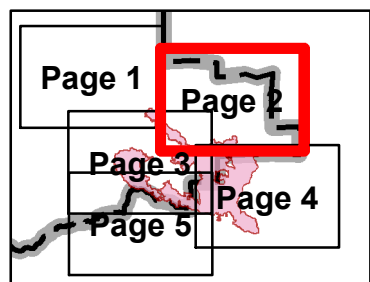
Page 1

- Structures
- Drop Point
- Ⓜ Water Source
- ⎓ Division Break
- ▬ Uncontrolled Fire Edge
- ▬ Completed Line
- H · H Completed Hand Line
- Ⓜ Completed Burnout
- ▭ Direct Protection Area
- ▭ Administrative Forest
- ▭ Wilderness
- ▭ BLM
- ▭ USDA Forest Service



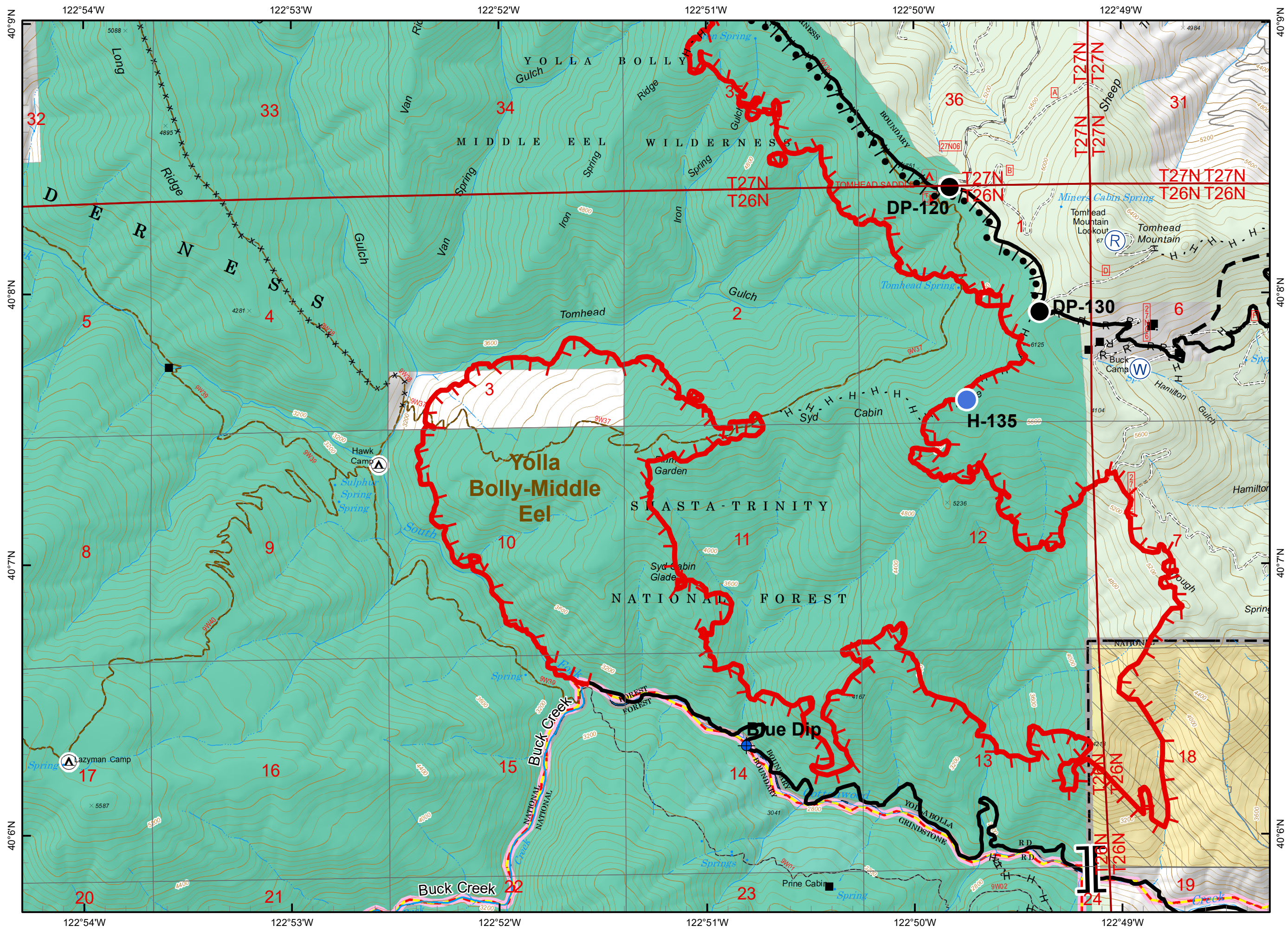
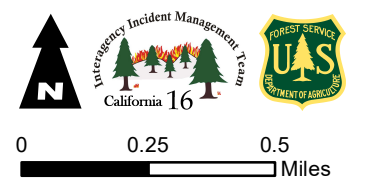
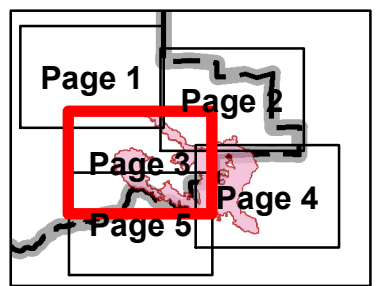
Fire Perimeter as of 9/17 @ 1938

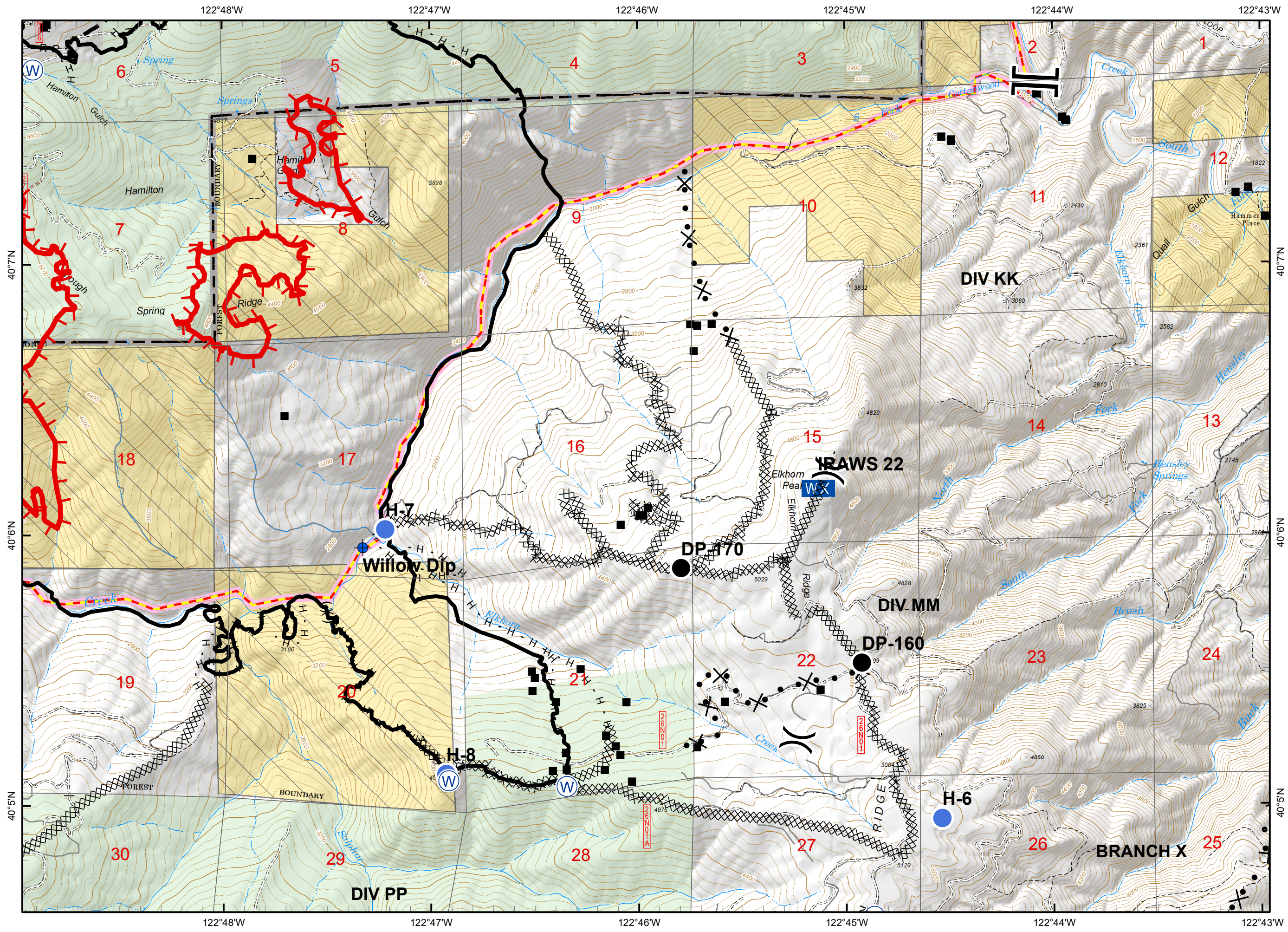
- Structures
- ⊙ Camp
- Drop Point
- Helispot
- Ⓡ Repeater
- Ⓜ Water Source
- ┌ Uncontrolled Fire Edge
- Completed Line
- XXXXX Completed Dozer Line
- H · H Completed Hand Line
- R · R Road as Completed Line
- Access or Improved Road
- ⊥ Completed Burnout
- - - Planned Fire Line
- ▭ Direct Protection Area
- ▭ Administrative Forest
- ▭ Wilderness
- ▭ BLM
- ▭ USDA Forest Service



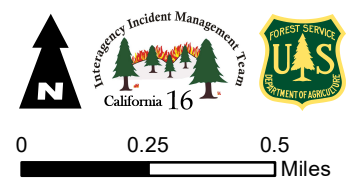
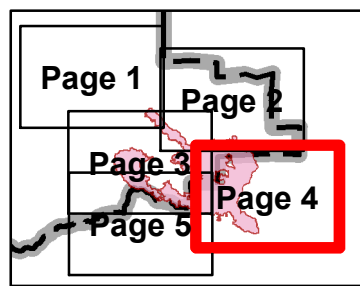
Fire Perimeter as of 9/17 @ 1938

- Structures
- ⊕ Dip Site
- Drop Point
- Helispot
- Ⓡ Repeater
- Ⓢ Water Source
- || Branch Break
- ┌ Uncontrolled Fire Edge
- Completed Line
- H · H Completed Hand Line
- R · R Road as Completed Line
- Ⓢ Completed Burnout
- Planned Fire Line
- ▭ Direct Protection Area
- ▭ Administrative Forest
- ▭ Wilderness
- ▭ BLM
- ▭ USDA Forest Service













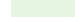




- Structures
- WX Mobile Weather Unit
- W Water Source
- ( ) Division Break
- || Branch Break
- ┌ Uncontrolled Fire Edge
- Completed Line
- XXXXX Completed Dozer Line
- H - H Completed Hand Line
- R - R Road as Completed Line
- - - Planned Fire Line
- ▭ Direct Protection Area
- ▭ Administrative Forest
- ▭ BLM
- ▭ USDA Forest Service



Fire Perimeter as of 9/17 @ 1938

-  Camp
-  Dip Site
-  Division Break
-  Branch Break
-  Uncontrolled Fire Edge
-  Completed Line
-  Completed Dozer Line
-  Completed Hand Line
-  Direct Protection Area
-  Administrative Forest
-  Wilderness
-  BLM
-  USDA Forest Service

