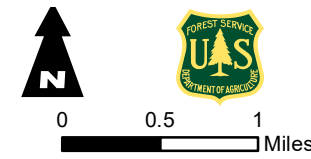


IAP INDEX MAP
SOUTH FIRE
 2019-CASHF-1209
 9/21/2019
 5,209 ACRES

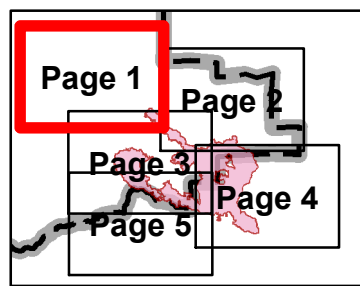
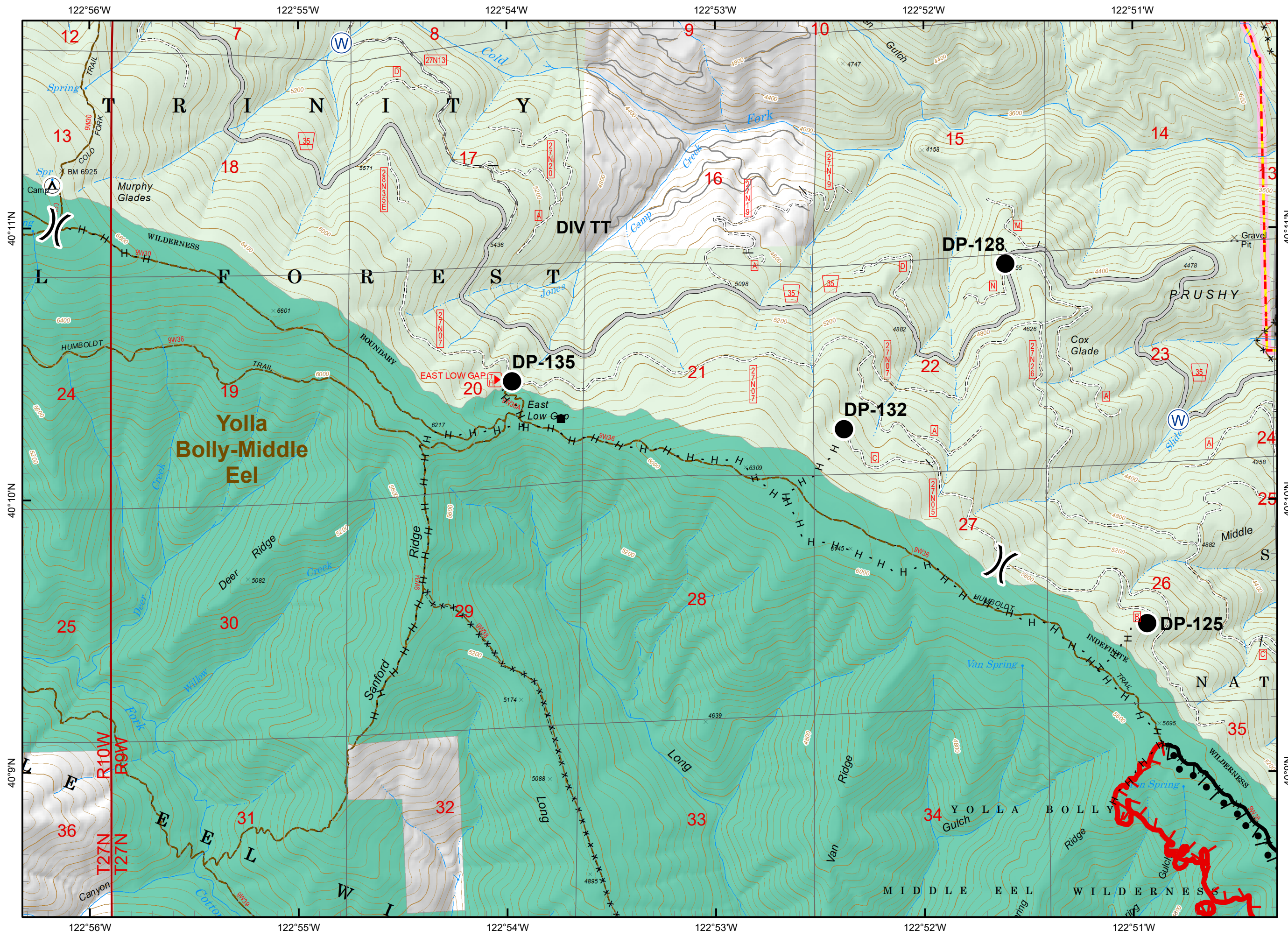
Fire Perimeter as of 9/19 @ 2306

- Camp
- Dip Site
- Drop Point
- Helispot
- Mobile Weather Unit
- Repeater
- Water Source
- Division Break
- Branch Break
- Direct Protection Area
- Administrative Forest
- Wilderness
- BLM
- USDA Forest Service



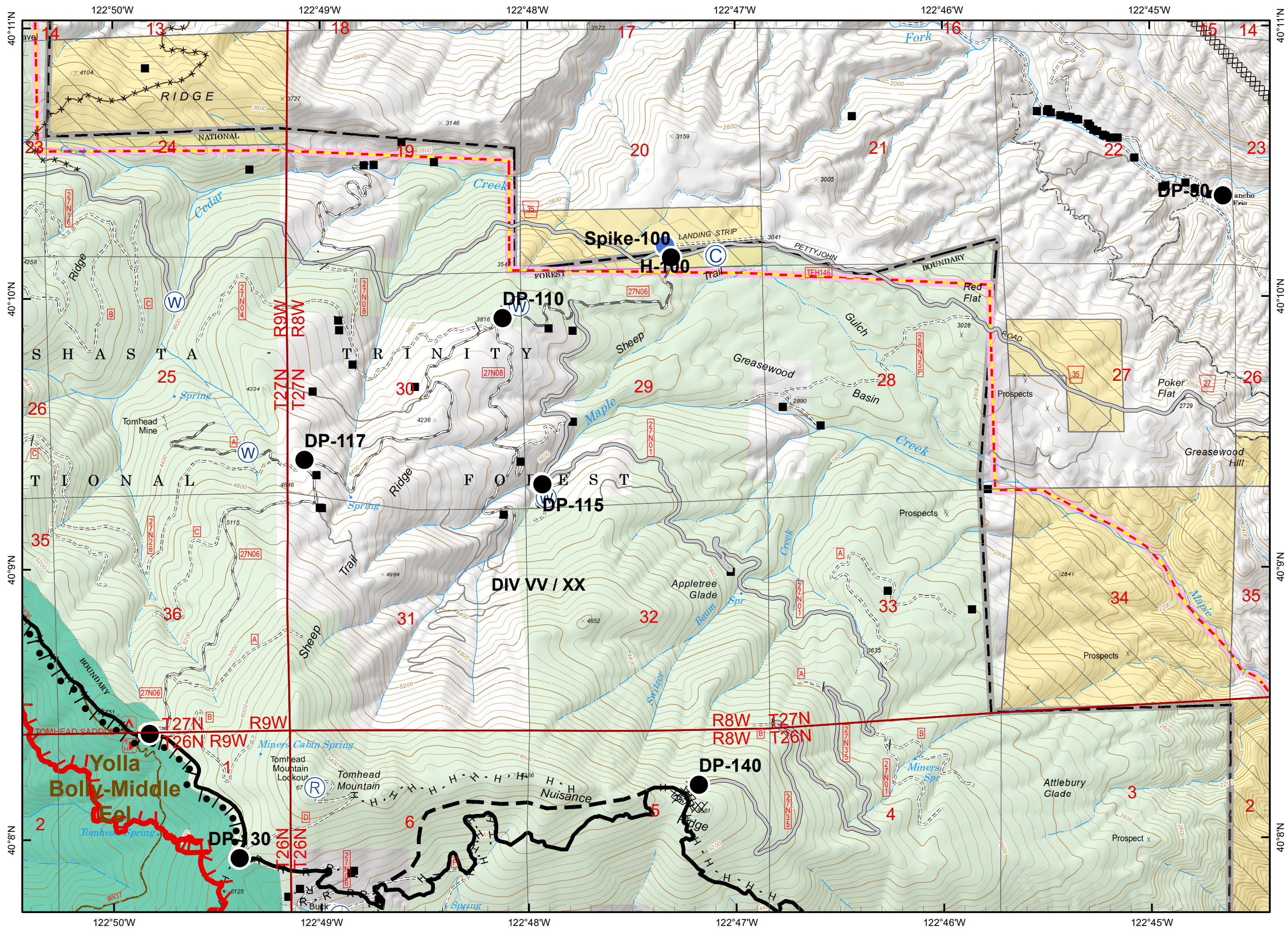
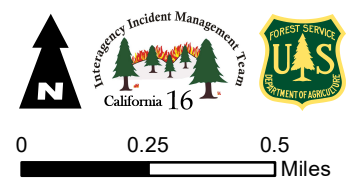
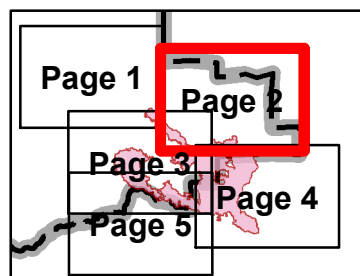
Fire Perimeter as of 9/19 @ 2306

- Structures
- Drop Point
- ⊙ Water Source
- ⌋ Division Break
- ▬ Uncontrolled Fire Edge
- ▬ Completed Line
- H · H Completed Hand Line
- ▬ Access or Improved Road
- ⊙ Completed Burnout
- ▭ Direct Protection Area
- ▭ Administrative Forest
- ▭ Wilderness
- ▭ BLM
- ▭ USDA Forest Service



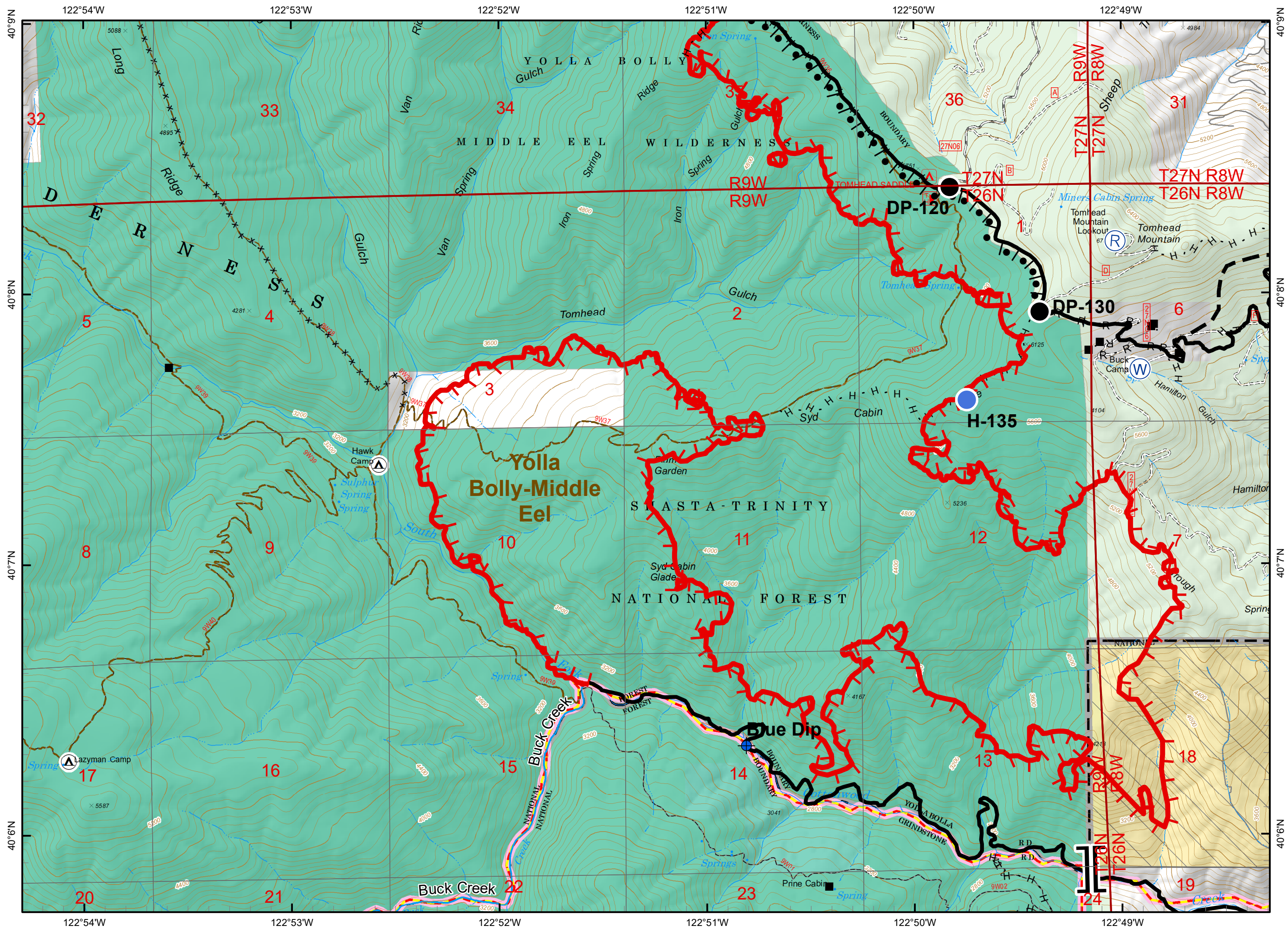
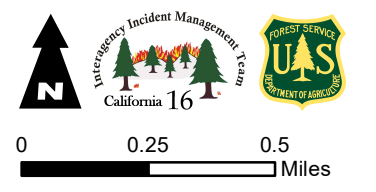
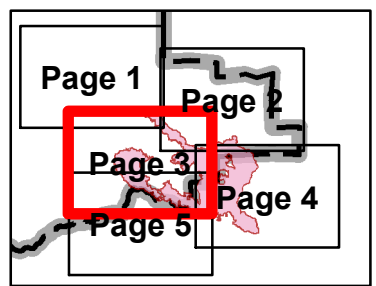
Fire Perimeter as of 9/19 @ 2306

- Structures
- ⊙ Camp
- Drop Point
- Helispot
- Ⓡ Repeater
- Ⓜ Water Source
- ▬ Uncontrolled Fire Edge
- ▬ Completed Line
- ▬ Completed Dozer Line
- H · H Completed Hand Line
- R · R Road as Completed Line
- ▬ Access or Improved Road
- ▬ Completed Burnout
- ▬ Planned Fire Line
- ▬ Direct Protection Area
- ▬ Administrative Forest
- ▬ Wilderness
- ▬ BLM
- ▬ USDA Forest Service

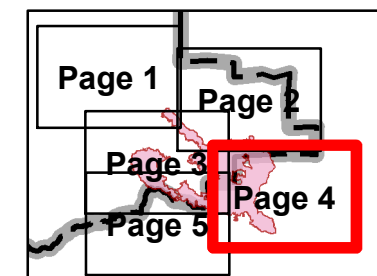


Fire Perimeter as of 9/19 @ 2306

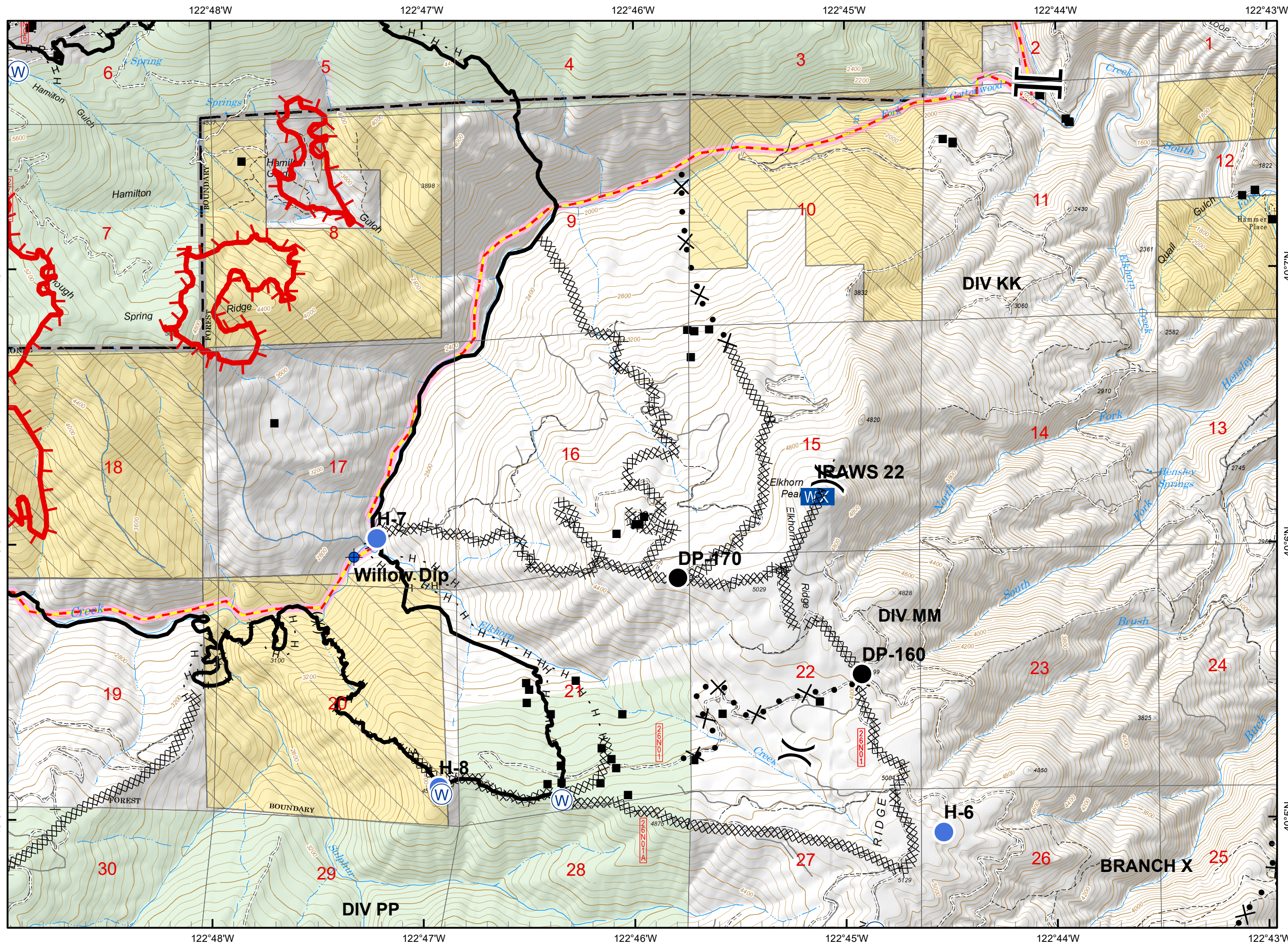
- Structures
- ⊕ Dip Site
- Drop Point
- Helispot
- Ⓡ Repeater
- Ⓜ Water Source
- || Branch Break
- ┌ Uncontrolled Fire Edge
- Completed Line
- H · H Completed Hand Line
- R · R Road as Completed Line
- Ⓜ Completed Burnout
- Planned Fire Line
- ▭ Direct Protection Area
- ▭ Administrative Forest
- ▭ Wilderness
- ▭ BLM
- ▭ USDA Forest Service










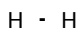




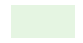
- Structures
- WX Mobile Weather Unit
- W Water Source
- () Division Break
- || Branch Break
- ┌ Uncontrolled Fire Edge
- Completed Line
- XXXXX Completed Dozer Line
- H - H Completed Hand Line
- R - R Road as Completed Line
- - - Planned Fire Line
- ▭ Direct Protection Area
- ▭ Administrative Forest
- ▭ BLM
- ▭ USDA Forest Service



0 0.25 0.5 Miles



Fire Perimeter as of 9/19 @ 2306

-  Camp
-  Dip Site
-  Division Break
-  Branch Break
-  Uncontrolled Fire Edge
-  Completed Line
-  Completed Dozer Line
-  Completed Hand Line
-  Direct Protection Area
-  Administrative Forest
-  Wilderness
-  BLM
-  USDA Forest Service

