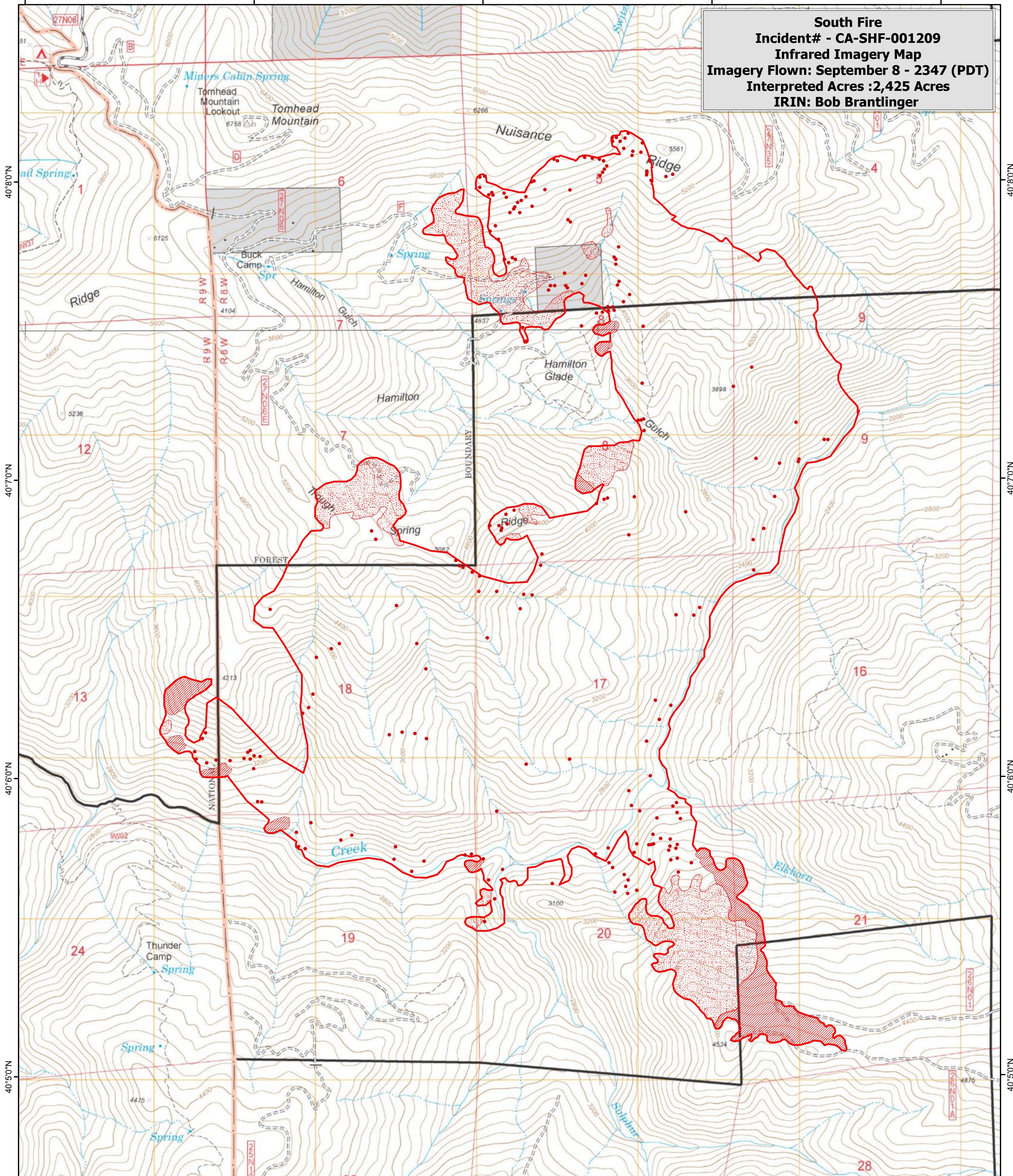





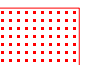
122°50'0"W 122°49'0"W 122°48'0"W 122°47'0"W 122°46'0"W

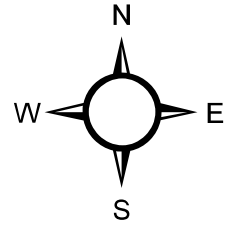
South Fire
Incident# - CA-SHF-001209
Infrared Imagery Map
Imagery Flown: September 8 - 2347 (PDT)
Interpreted Acres :2,425 Acres
IRIN: Bob Brantlinger



122°50'0"W 122°49'0"W 122°48'0"W 122°47'0"W 122°46'0"W

Legend

-  **Heat Perimeter**
-  **Isolated Heat Source**
-  **Intense Heat**
-  **Scattered Heat Source**



0 0.125 0.25 0.5 0.75 1 Miles

