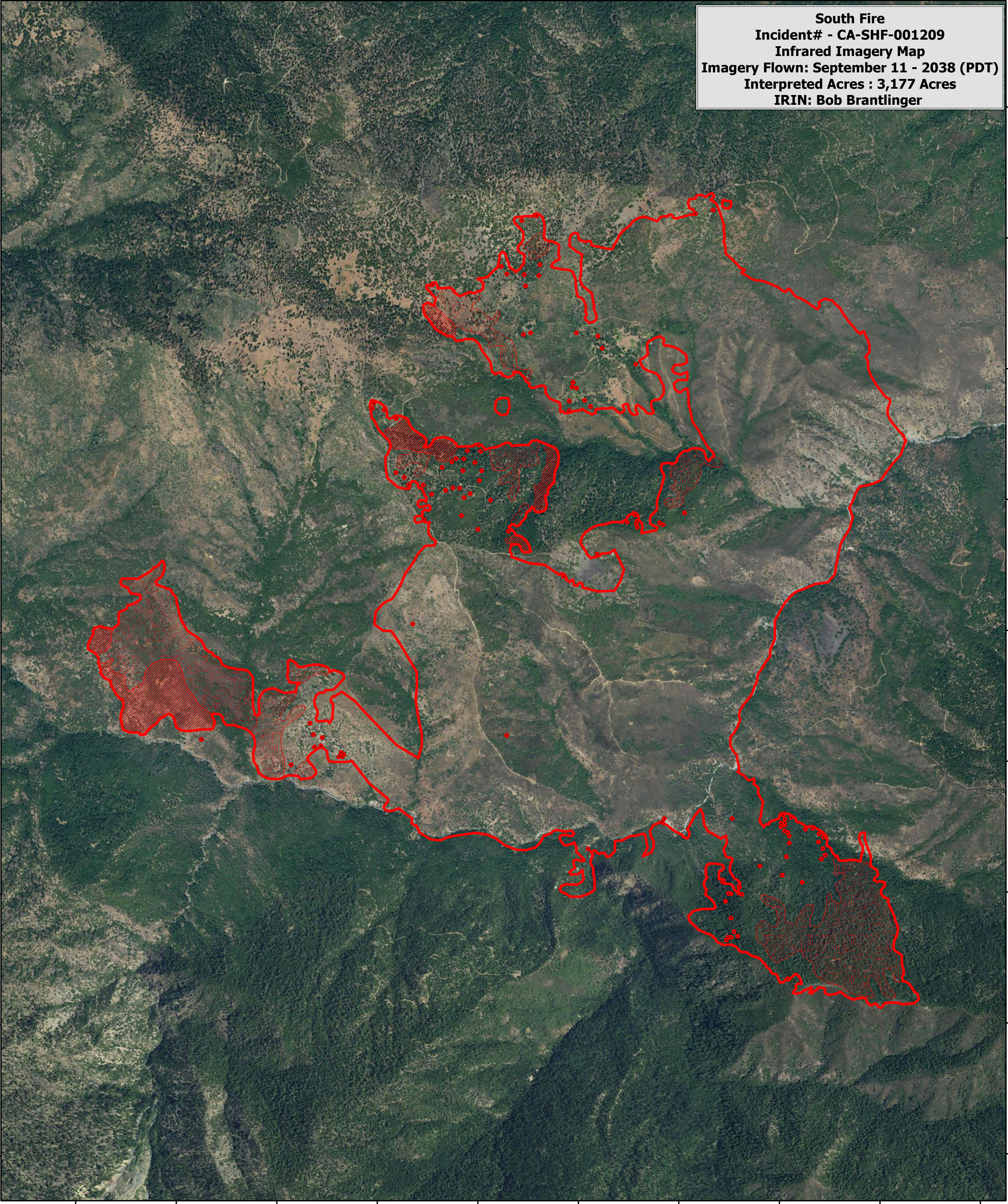


122°50'30"W 122°50'0"W 122°49'30"W 122°49'0"W 122°48'30"W 122°48'0"W 122°47'30"W 122°47'0"W 122°46'30"W 122°46'0"W

**South Fire**  
**Incident# - CA-SHF-001209**  
**Infrared Imagery Map**  
**Imagery Flown: September 11 - 2038 (PDT)**  
**Interpreted Acres : 3,177 Acres**  
**IRIN: Bob Brantlinger**




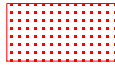
40°8'30"N  
40°8'0"N  
40°7'30"N  
40°7'0"N  
40°6'30"N  
40°6'0"N  
40°5'30"N  
40°5'0"N  
40°4'30"N

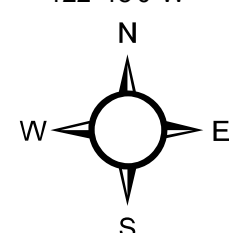
40°8'30"N  
40°8'0"N  
40°7'30"N  
40°7'0"N  
40°6'30"N  
40°6'0"N  
40°5'30"N  
40°5'0"N  
40°4'30"N



122°50'30"W 122°50'0"W 122°49'30"W 122°49'0"W 122°48'30"W 122°48'0"W 122°47'30"W 122°47'0"W 122°46'30"W 122°46'0"W

**Legend**

-  **Heat Perimeter**
-  **Intense Heat**
-  **Isolated Heat Source**
-  **Scattered Heat Source**



0 0.125 0.25 0.5 0.75 1 Miles

