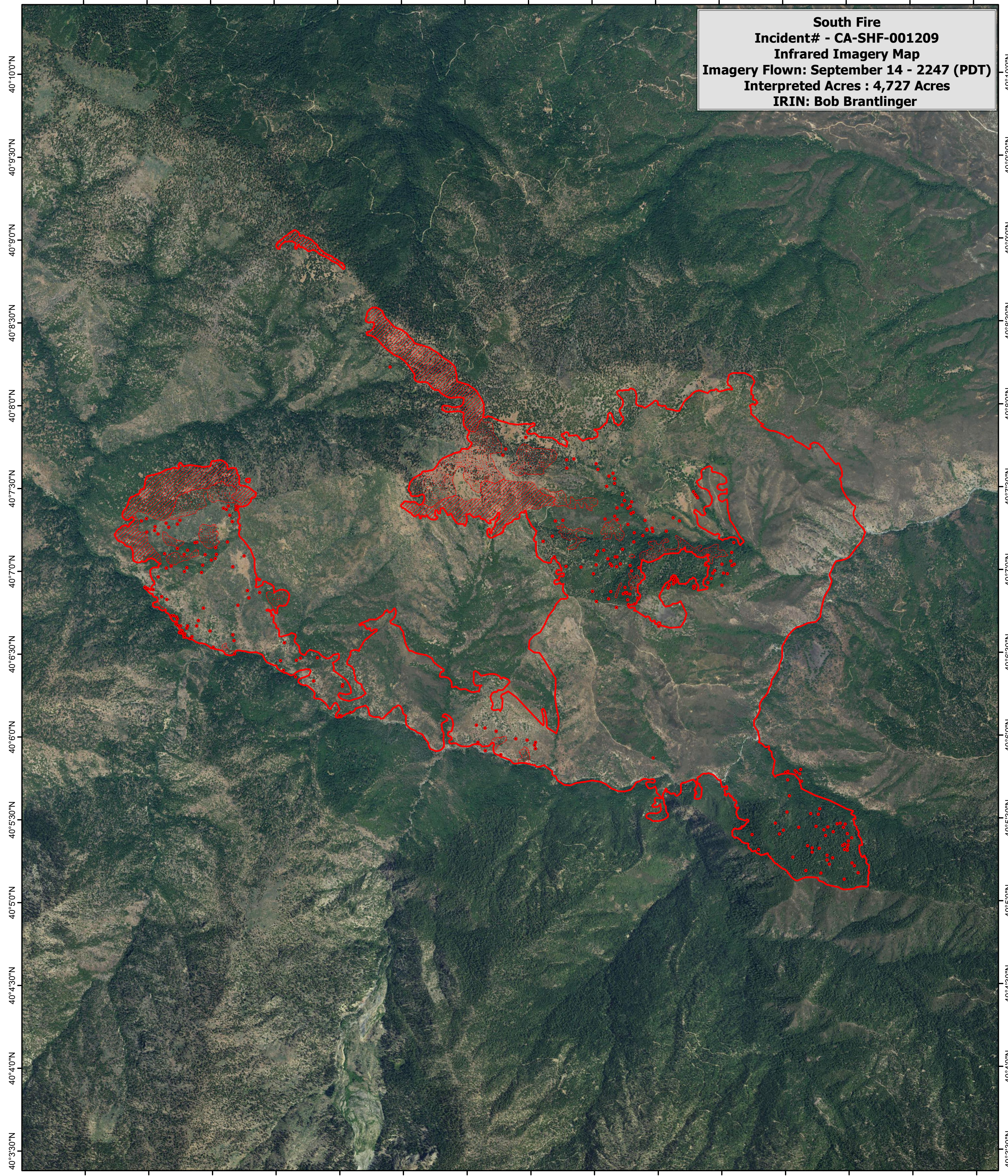


122°52'30"W 122°52'0"W 122°51'30"W 122°51'0"W 122°50'30"W 122°50'0"W 122°49'30"W 122°49'0"W 122°48'30"W 122°48'0"W 122°47'30"W 122°47'0"W 122°46'30"W 122°46'0"W 122°45'30"W

South Fire
Incident# - CA-SHF-001209
Infrared Imagery Map
Imagery Flown: September 14 - 2247 (PDT)
Interpreted Acres : 4,727 Acres
IRIN: Bob Brantlinger




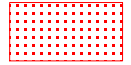


40°10'0"N
40°9'30"N
40°9'0"N
40°8'30"N
40°8'0"N
40°7'30"N
40°7'0"N
40°6'30"N
40°6'0"N
40°5'30"N
40°5'0"N
40°4'30"N
40°4'0"N
40°3'30"N

40°10'0"N
40°9'30"N
40°9'0"N
40°8'30"N
40°8'0"N
40°7'30"N
40°7'0"N
40°6'30"N
40°6'0"N
40°5'30"N
40°5'0"N
40°4'30"N
40°4'0"N
40°3'30"N

122°52'30"W 122°52'0"W 122°51'30"W 122°51'0"W 122°50'30"W 122°50'0"W 122°49'30"W 122°49'0"W 122°48'30"W 122°48'0"W 122°47'30"W 122°47'0"W 122°46'30"W 122°46'0"W 122°45'30"W

Legend

-  **Heat Perimeter**
-  **Intense Heat**
-  **Isolated Heat Source**
-  **Scattered Heat Source**

