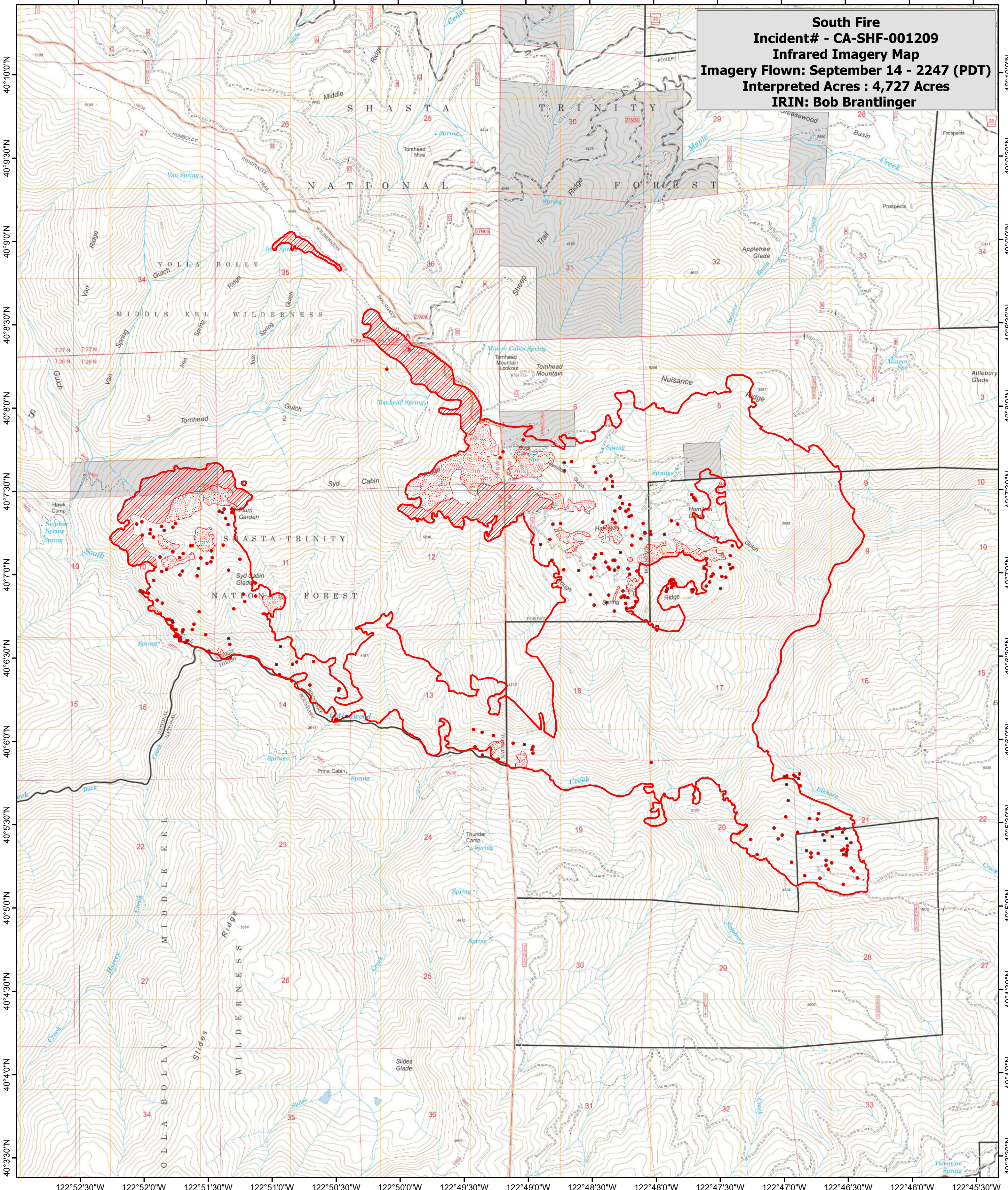



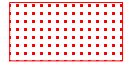


122°52'30"W 122°52'0"W 122°51'30"W 122°51'0"W 122°50'30"W 122°50'0"W 122°49'30"W 122°49'0"W 122°48'30"W 122°48'0"W 122°47'30"W 122°47'0"W 122°46'30"W 122°46'0"W 122°45'30"W

South Fire
Incident# - CA-SHF-001209
Infrared Imagery Map
Imagery Flown: September 14 - 2247 (PDT)
Interpreted Acres : 4,727 Acres
IRIN: Bob Brantlinger



Legend

-  **Heat Perimeter**
-  **Intense Heat**
-  **Isolated Heat Source**
-  **Scattered Heat Source**

