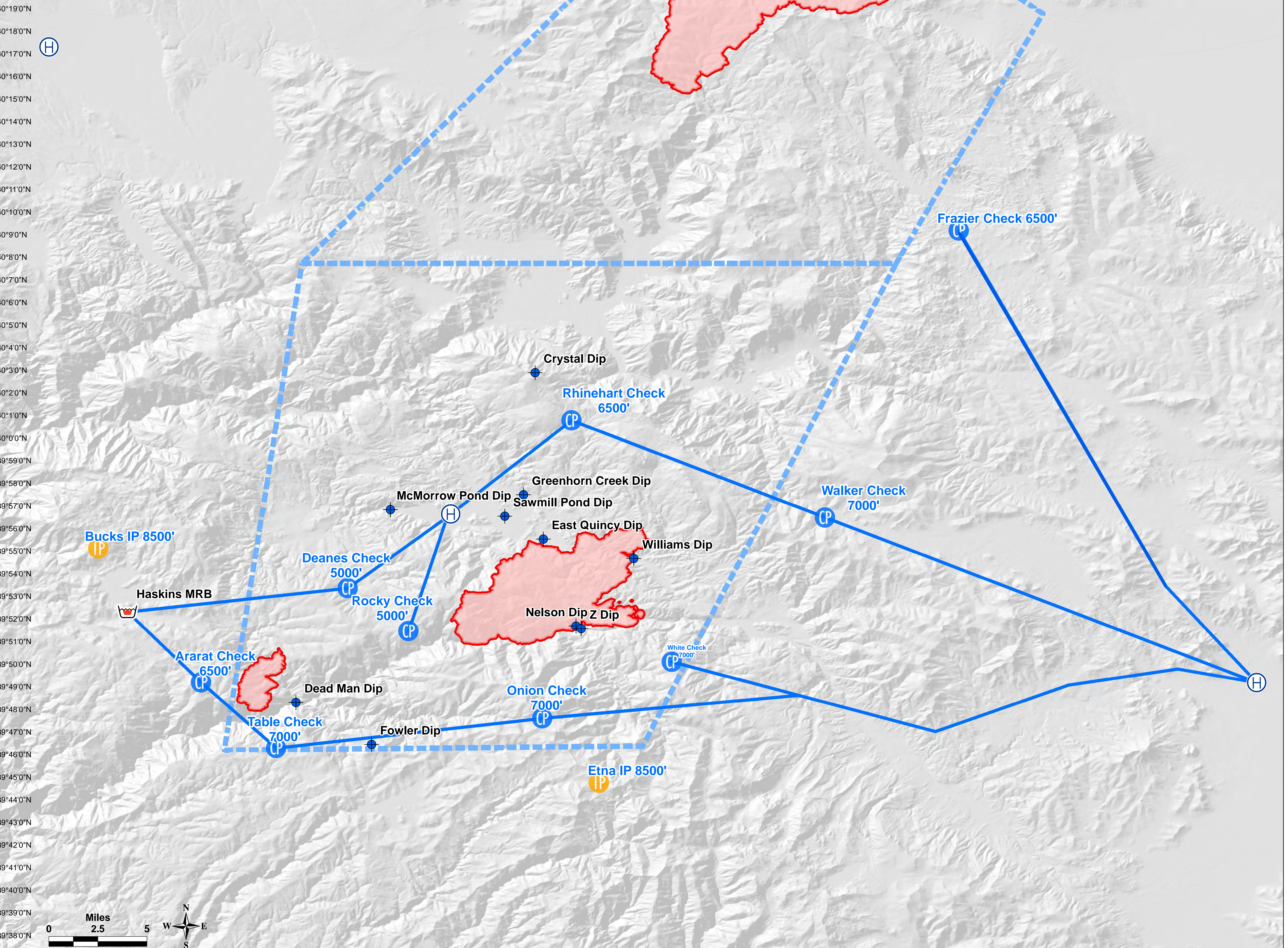


Checks and IPs		
Deanes Check 5000'	39° 53.35	121° 1.37
White Check 7000'	39° 50.09	120° 47.03
Onion Check 7000'	39° 47.6	120° 52.76
Rocky Check 5000'	39° 51.46	120° 58.68
Frazier Check 6500'	40° 9.17	120° 34.33
Walker Check 7000'	39° 56.48	120° 40.25
Table Check 7000'	39° 46.28	121° 4.54
Ararat Check 6500'	39° 49.19	121° 7.86
Rhinehart Check 6500'	40° 0.77	120° 51.47
Etna IP 8500'	39° 44.75	120° 50.25
Bucks IP 8500'	39° 55.11	121° 12.39
Dipsites		
Dead Man Dip	39° 48.29	121° 3.66
Fowler Dip	39° 46.44	121° 0.32
Crystal Dip	40° 2.88	120° 53.08
Williams Dip	39° 54.66	120° 48.71
Haskins MRB	39° 52.3	121° 11.12
East Quincy Dip	39° 55.52	120° 52.72
Greenhorn Creek Dip	39° 57.48	120° 53.59
McMorrow Pond Dip	39° 56.83	120° 59.48
Nelson Dip	39° 51.67	120° 51.27
Sawmill Pond Dip	39° 56.53	120° 54.42
Z Dip	39° 51.56	120° 51.04

NorthComplex
CA-PNF-001308
NAD 83 UTM Zone 10
Reference Scale: 1:100,000
8/24/2020

Processed by:
Brandon C. Lewis
FireWatchCabreraCB@gmail.com

40°19'0"N
40°18'0"N
40°17'0"N
40°16'0"N
40°15'0"N
40°14'0"N
40°13'0"N
40°12'0"N
40°11'0"N
40°10'0"N
40°9'0"N
40°8'0"N
40°7'0"N
40°6'0"N
40°5'0"N
40°4'0"N
40°3'0"N
40°2'0"N
40°1'0"N
40°0'0"N
39°59'0"N
39°58'0"N
39°57'0"N
39°56'0"N
39°55'0"N
39°54'0"N
39°53'0"N
39°52'0"N
39°51'0"N
39°50'0"N
39°49'0"N
39°48'0"N
39°47'0"N
39°46'0"N
39°45'0"N
39°44'0"N
39°43'0"N
39°42'0"N
39°41'0"N
39°40'0"N
39°39'0"N
39°38'0"N

121°4'0"W 121°2'0"W 121°0'0"W 120°58'0"W 120°56'0"W 120°54'0"W 120°52'0"W 120°50'0"W 120°48'0"W 120°46'0"W 120°44'0"W 120°42'0"W 120°40'0"W 120°38'0"W 120°36'0"W 120°34'0"W 120°32'0"W 120°30'0"W 120°28'0"W 120°26'0"W 120°24'0"W 120°22'0"W 120°20'0"W



Miles
0 2.5 5

