


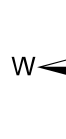
Pilot Map

North Complex
CA-PNF-001308
8/26/2020

- Camp
- Dip Site
- Drop Point
- Incident Command Post
- Internet Access
- Repeater
- Retardant/Mud Pit
- Safety Zone
- Water Source
- Other
- Division Break
- Uncontrolled Fire Edge
- Contained Line
- Completed Dozer Line
- Completed Hand Line
- Road as Completed Line
- Line Break Completed
- Proposed Dozer Line
- Aerial_Hazard
- Wildfire Daily Fire Perimeter
- Wilderness
- TFR

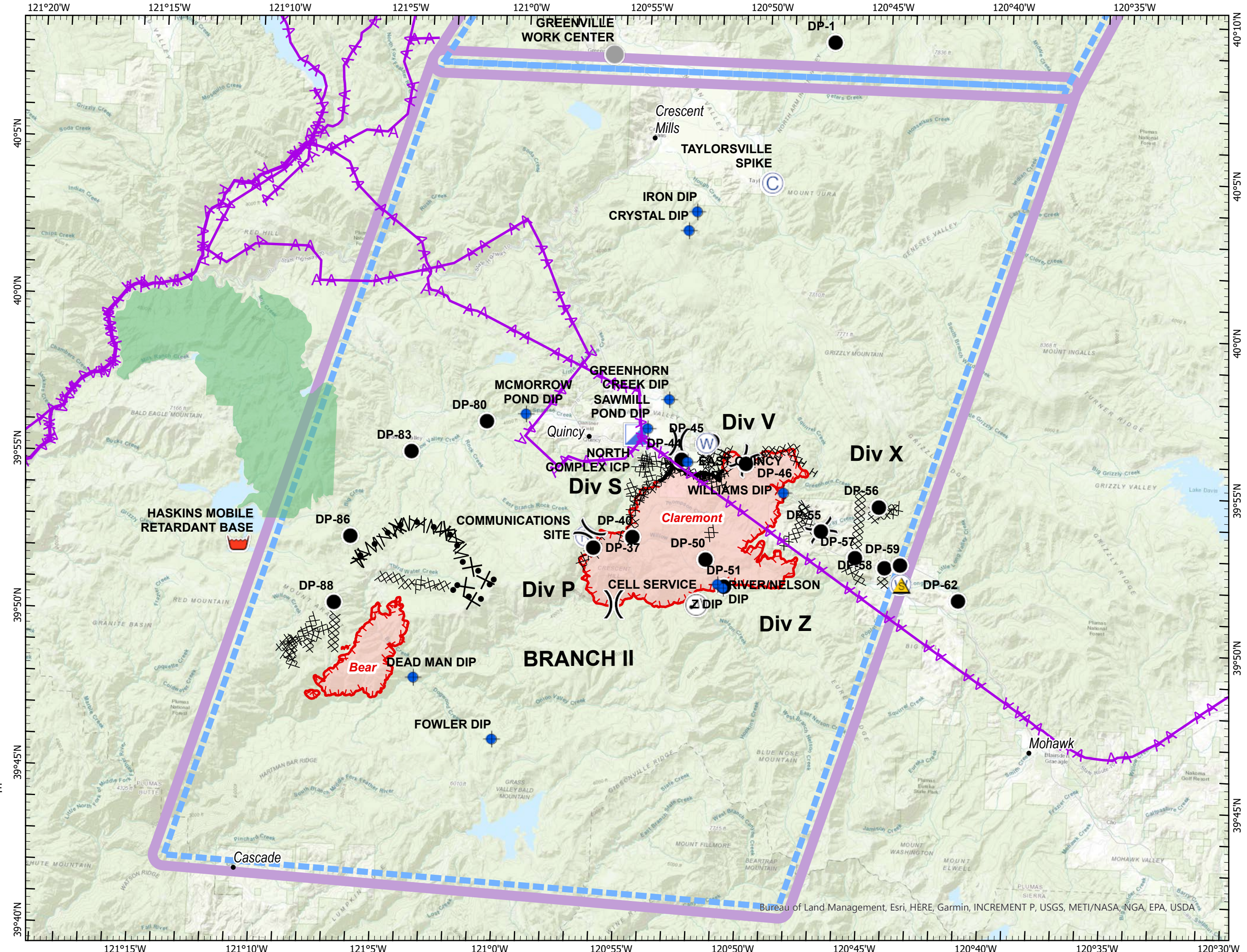


North Complex



0 1.5 3 6 Miles

Bureau of Land Management, Esri, HERE, Garmin, INCREMENT P, USGS, METI/NASA, NGA, EPA, USDA



Incident Name	Feature Category	Label	Long	Lat
Bear	Dip Site	Dead Man Dip	121° 3.664' W	39° 48.294' N
Bear	Dip Site	Fowler Dip	121° 0.317' W	39° 46.437' N
Bear	Drop Point	DP-80	121° 1.080' W	39° 56.554' N
Bear	Drop Point	DP-83	121° 4.136' W	39° 55.490' N
Bear	Drop Point	DP-86	121° 6.514' W	39° 52.716' N
Bear	Drop Point	DP-88	121° 7.071' W	39° 50.579' N
Bear	Retardant/Mud Pit	Haskins Mobile Retardant Bz	121° 11.120' W	39° 52.304' N
Claremont	Camp	Taylorville Spike	120° 49.715' W	40° 4.510' N
Claremont	Dip Site	Crystal Dip	120° 53.081' W	40° 2.883' N
Claremont	Dip Site	East Quincy Dip	120° 52.720' W	39° 55.520' N
Claremont	Dip Site	Greenhorn Creek Dip	120° 53.595' W	39° 57.485' N
Claremont	Dip Site	McMorrow Pond Dip	120° 59.485' W	39° 56.827' N
Claremont	Dip Site	River/Nelson Dip	120° 51.270' W	39° 51.670' N
Claremont	Dip Site	Sawmill Pond Dip	120° 54.425' W	39° 56.532' N
Claremont	Dip Site	Williams Dip	120° 48.713' W	39° 54.662' N
Claremont	Dip Site	Z Dip	120° 51.040' W	39° 51.560' N
Claremont	Drop Point	DP-37	120° 56.463' W	39° 52.679' N
Claremont	Drop Point	DP-40	120° 54.874' W	39° 53.072' N
Claremont	Drop Point	DP-44	120° 52.972' W	39° 55.603' N
Claremont	Drop Point	DP-45	120° 51.730' W	39° 56.231' N
Claremont	Drop Point	DP-46	120° 50.307' W	39° 55.551' N
Claremont	Drop Point	DP-50	120° 51.812' W	39° 52.457' N
Claremont	Drop Point	DP-51	120° 50.999' W	39° 51.616' N
Claremont	Drop Point	DP-55	120° 47.086' W	39° 53.503' N
Claremont	Drop Point	DP-56	120° 44.748' W	39° 54.353' N
Claremont	Drop Point	DP-57	120° 45.634' W	39° 52.706' N
Claremont	Drop Point	DP-58	120° 44.404' W	39° 52.424' N
Claremont	Drop Point	DP-59	120° 43.770' W	39° 52.534' N
Claremont	Drop Point	DP-62	120° 41.320' W	39° 51.460' N
Claremont	Incident Command Post	North Complex ICP	120° 54.903' W	39° 56.346' N
Claremont	Water Source		120° 51.972' W	39° 56.150' N
Claremont	Water Source		120° 43.699' W	39° 51.918' N
Claremont	Water Source		120° 43.554' W	39° 51.894' N
Sheep	Camp	Susanville Base Camp	120° 38.101' W	40° 24.836' N
Sheep	Dip Site	Antelope Dip	120° 36.583' W	40° 11.515' N
Sheep	Dip Site	Bridge Dip	120° 55.199' W	40° 16.242' N
Sheep	Dip Site	Emerson Dip	120° 38.653' W	40° 21.972' N
Sheep	Dip Site	Golf Dip	120° 39.484' W	40° 21.977' N
Sheep	Dip Site	Pipe Dip	120° 38.221' W	40° 21.253' N
Sheep	Dip Site	Richmond Dip	120° 36.526' W	40° 22.465' N
Sheep	Dip Site	Taylor Dip	120° 43.071' W	40° 11.515' N
Sheep	Drop Point	DP-1	120° 47.345' W	40° 9.075' N
Sheep	Drop Point	DP-10	120° 45.095' W	40° 14.356' N
Sheep	Drop Point	DP-17	120° 46.833' W	40° 17.835' N
Sheep	Drop Point	DP-20	120° 44.387' W	40° 19.084' N
Sheep	Drop Point	DP-30	120° 41.216' W	40° 21.801' N