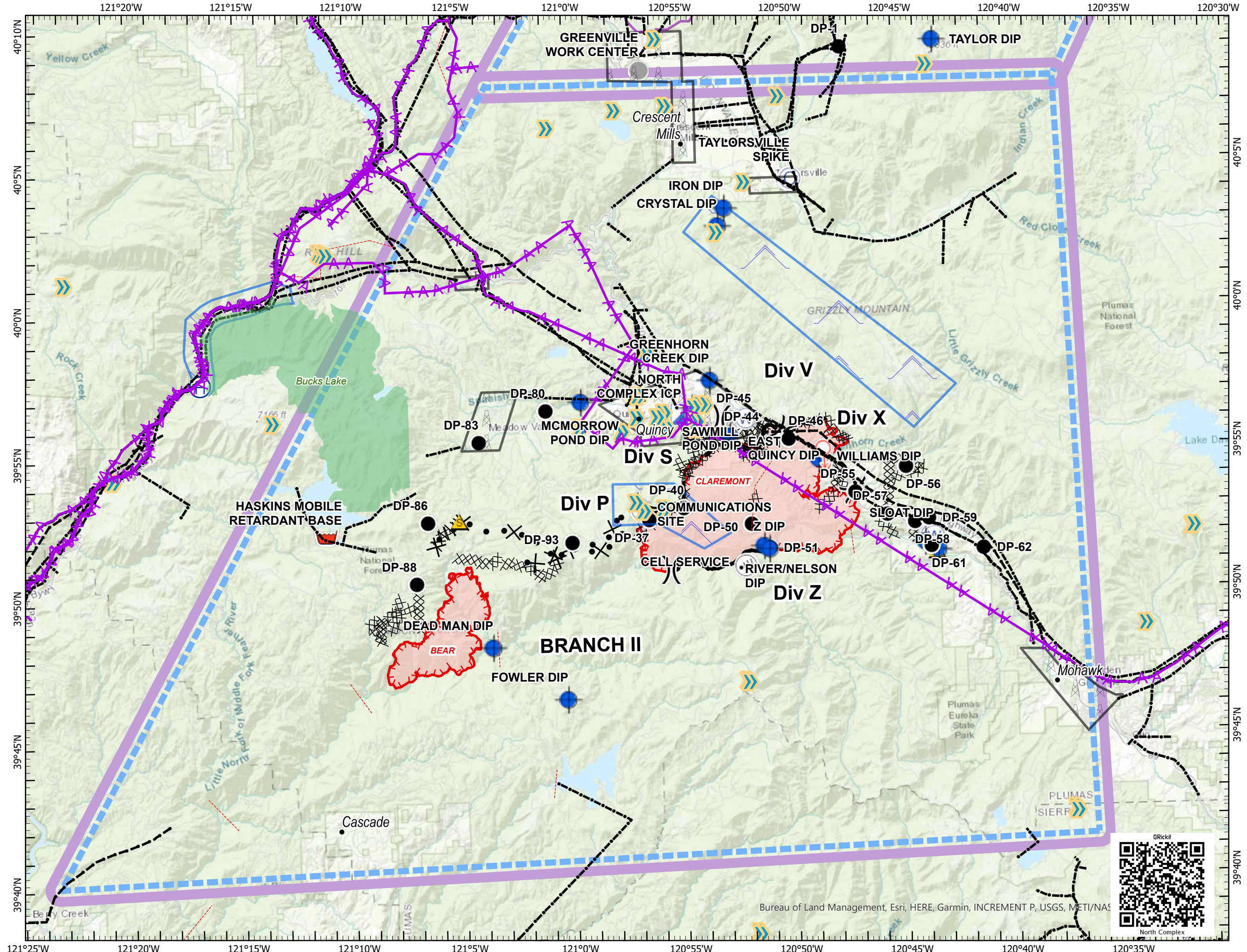
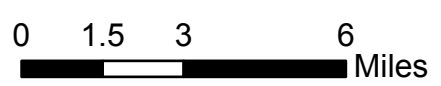


Pilot Map

North Complex CA-PNF-001308 8/27/2020

- Camp
- Dip Site
- Drop Point
- Incident Command Post
- Internet Access
- Repeater
- Retardant/Mud Pit
- Safety Zone
- Spot Fire
- Water Source
- Other
- Division Break
- Tower
- Airport
- Helibase
- Uncontrolled Fire Edge
- Contained Line
- Completed Dozer Line
- Completed Hand Line
- Road as Completed Line
- Line Break Completed
- Proposed Dozer Line
- Powerline
- Telephone wires
- Aerial_Hazard
- Hangglide/Paraglide
- Powerline
- Turbulence
- Wildfire Daily Fire Perimeter
- Wilderness
- TFR



| Incident Name | Feature Category | Label | Long | Lat |
|---------------|-----------------------|-----------------------------|----------------|---------------|
| Bear | Dip Site | Dead Man Dip | 121° 3.664' W | 39° 48.294' N |
| Bear | Dip Site | Fowler Dip | 121° 0.317' W | 39° 46.437' N |
| Bear | Drop Point | DP-80 | 121° 1.080' W | 39° 56.554' N |
| Bear | Drop Point | DP-83 | 121° 4.136' W | 39° 55.490' N |
| Bear | Drop Point | DP-86 | 121° 6.514' W | 39° 52.716' N |
| Bear | Drop Point | DP-88 | 121° 7.071' W | 39° 50.579' N |
| Bear | Retardant/Mud Pit | Haskins Mobile Retardant Bz | 121° 11.120' W | 39° 52.304' N |
| Claremont | Camp | Taylorville Spike | 120° 49.715' W | 40° 4.510' N |
| Claremont | Dip Site | Crystal Dip | 120° 53.081' W | 40° 2.883' N |
| Claremont | Dip Site | East Quincy Dip | 120° 52.720' W | 39° 55.520' N |
| Claremont | Dip Site | Greenhorn Creek Dip | 120° 53.595' W | 39° 57.485' N |
| Claremont | Dip Site | McMorrow Pond Dip | 120° 59.485' W | 39° 56.827' N |
| Claremont | Dip Site | River/Nelson Dip | 120° 51.270' W | 39° 51.670' N |
| Claremont | Dip Site | Sawmill Pond Dip | 120° 54.425' W | 39° 56.532' N |
| Claremont | Dip Site | Williams Dip | 120° 48.713' W | 39° 54.662' N |
| Claremont | Dip Site | Z Dip | 120° 51.040' W | 39° 51.560' N |
| Claremont | Drop Point | DP-37 | 120° 56.463' W | 39° 52.679' N |
| Claremont | Drop Point | DP-40 | 120° 54.874' W | 39° 53.072' N |
| Claremont | Drop Point | DP-44 | 120° 52.972' W | 39° 55.603' N |
| Claremont | Drop Point | DP-45 | 120° 51.730' W | 39° 56.231' N |
| Claremont | Drop Point | DP-46 | 120° 50.307' W | 39° 55.551' N |
| Claremont | Drop Point | DP-50 | 120° 51.812' W | 39° 52.457' N |
| Claremont | Drop Point | DP-51 | 120° 50.999' W | 39° 51.616' N |
| Claremont | Drop Point | DP-55 | 120° 47.086' W | 39° 53.503' N |
| Claremont | Drop Point | DP-56 | 120° 44.748' W | 39° 54.353' N |
| Claremont | Drop Point | DP-57 | 120° 45.634' W | 39° 52.706' N |
| Claremont | Drop Point | DP-58 | 120° 44.404' W | 39° 52.424' N |
| Claremont | Drop Point | DP-59 | 120° 43.770' W | 39° 52.534' N |
| Claremont | Drop Point | DP-62 | 120° 41.320' W | 39° 51.460' N |
| Claremont | Incident Command Post | North Complex ICP | 120° 54.903' W | 39° 56.346' N |
| Claremont | Water Source | | 120° 51.972' W | 39° 56.150' N |
| Claremont | Water Source | | 120° 43.699' W | 39° 51.918' N |
| Claremont | Water Source | | 120° 43.554' W | 39° 51.894' N |
| Sheep | Camp | Susanville Base Camp | 120° 38.101' W | 40° 24.836' N |
| Sheep | Dip Site | Antelope Dip | 120° 36.583' W | 40° 11.515' N |
| Sheep | Dip Site | Bridge Dip | 120° 55.199' W | 40° 16.242' N |
| Sheep | Dip Site | Emerson Dip | 120° 38.653' W | 40° 21.972' N |
| Sheep | Dip Site | Golf Dip | 120° 39.484' W | 40° 21.977' N |
| Sheep | Dip Site | Pipe Dip | 120° 38.221' W | 40° 21.253' N |
| Sheep | Dip Site | Richmond Dip | 120° 36.526' W | 40° 22.465' N |
| Sheep | Dip Site | Taylor Dip | 120° 43.071' W | 40° 11.515' N |
| Sheep | Drop Point | DP-1 | 120° 47.345' W | 40° 9.075' N |
| Sheep | Drop Point | DP-10 | 120° 45.095' W | 40° 14.356' N |
| Sheep | Drop Point | DP-17 | 120° 46.833' W | 40° 17.835' N |
| Sheep | Drop Point | DP-20 | 120° 44.387' W | 40° 19.084' N |
| Sheep | Drop Point | DP-30 | 120° 41.216' W | 40° 21.801' N |