

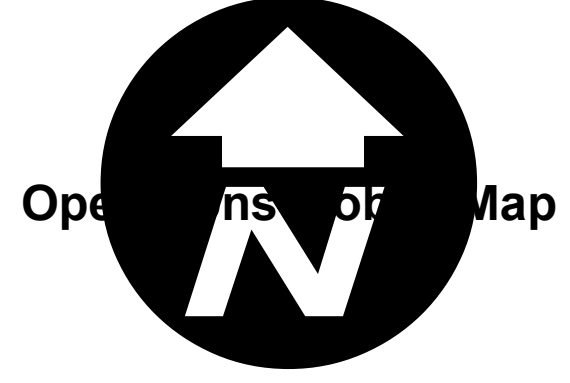
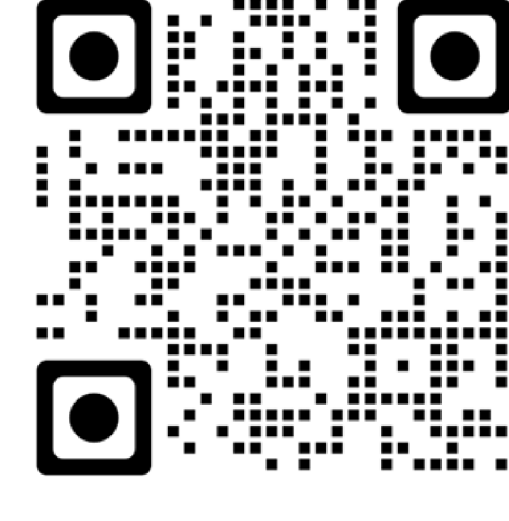
Briefing Map

Claremont & Bear Fires

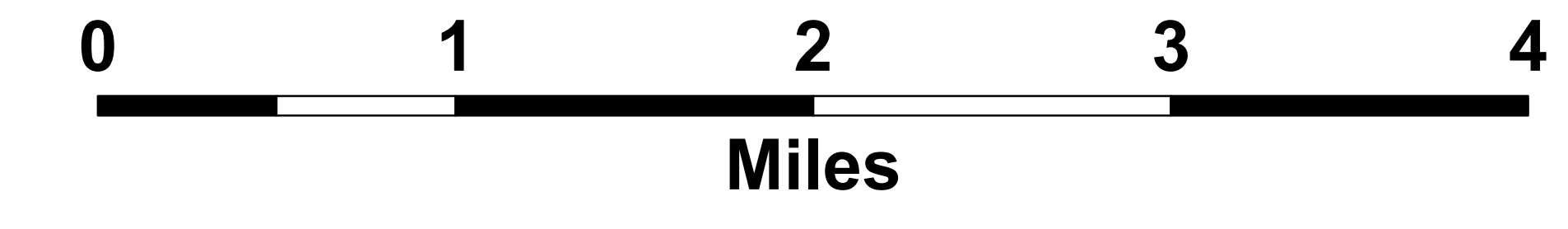
North Complex

CA-PNF-001308

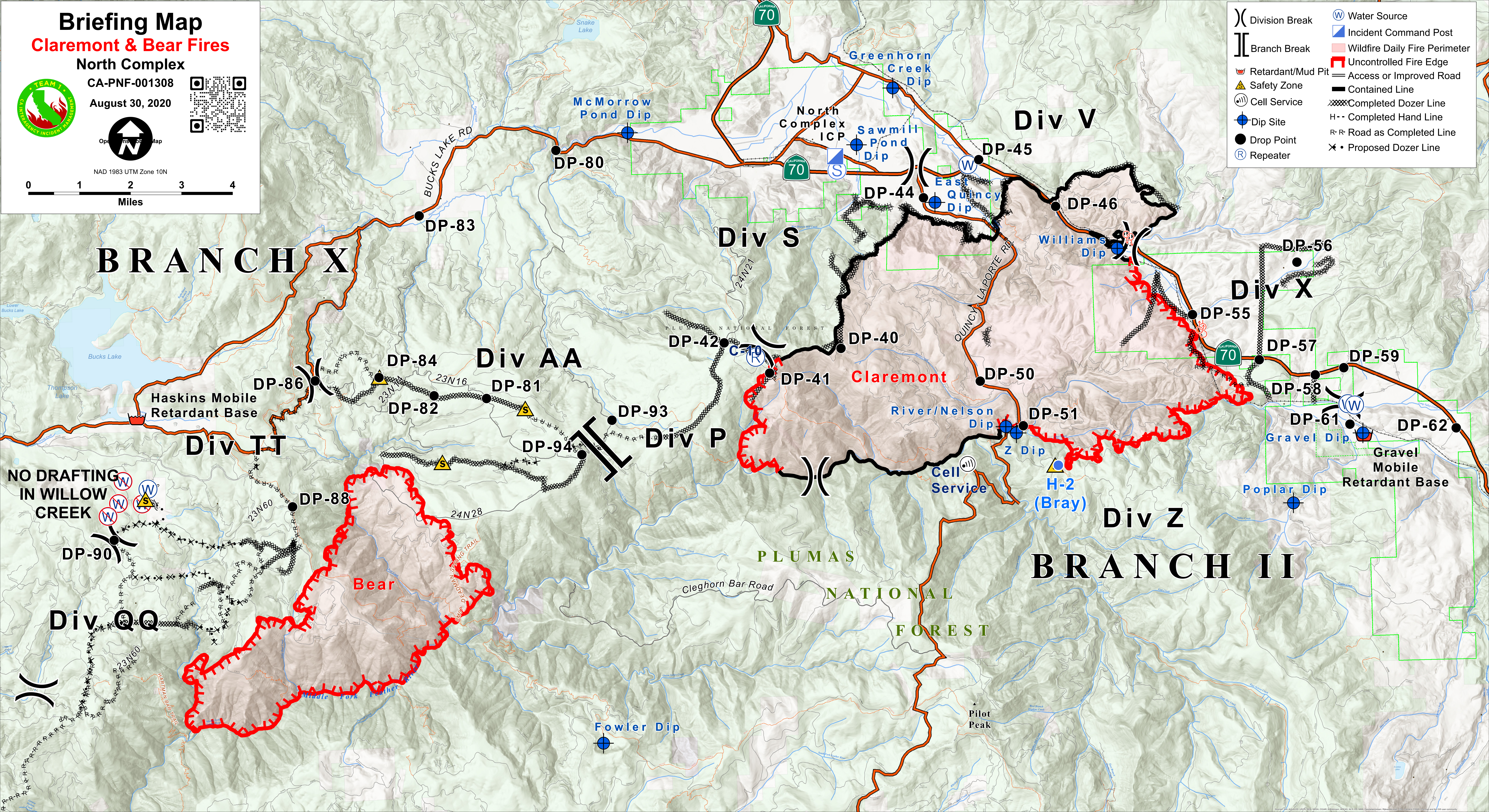
August 30, 2020



NAD 1983 UTM Zone 10N



	Division Break		Water Source
	Branch Break		Incident Command Post
	Retardant/Mud Pit		Wildfire Daily Fire Perimeter
	Safety Zone		Uncontrolled Fire Edge
	Cell Service		Access or Improved Road
	Dip Site		Contained Line
	Drop Point		Completed Dozer Line
	Repeater		Completed Hand Line
			R-R Road as Completed Line
			Proposed Dozer Line



**NO DRAFTING
IN WILLOW
CREEK**

Bear

Claremont

**PLUMAS
NATIONAL
FOREST**

BRANCH II

Div QQ

Div TT

Div AA

Div P

Div S

Div V

Div X

Div Z

Haskins Mobile Retardant Base

Gravel Mobile Retardant Base

North Complex ICP

DP-42

DP-41

DP-40

DP-50

DP-51

DP-57

DP-59

DP-58

DP-62

DP-61

DP-56

DP-55

DP-46

DP-45

DP-44

DP-80

DP-83

DP-84

DP-81

DP-93

DP-94

DP-88

DP-90

Fowler Dip

Pilot Peak

Cleghorn Bar Road

Bucks Lake Rd

Quincy Laporte Rd

River/Nelson Dip

Poplar Dip

Sawmill Pond Dip

East Quincy Dip

Williams Dip

McMorrow Pond Dip

Greenhorn Creek Dip

Snake Lake

Bucks Lake

Thompson Lake

Willow Creek

Middle Fork Feather

Poplar Creek

Clay Creek

McClure Creek

McClure Creek

McClure Creek

McClure Creek

McClure Creek

Lower Bucks Lake

Lower Bucks Lake

Lower Bucks Lake

Lower Bucks Lake

Lower Bucks Lake

Lower Bucks Lake

Lower Bucks Lake

Lower Bucks Lake

Lower Bucks Lake

Lower Bucks Lake