

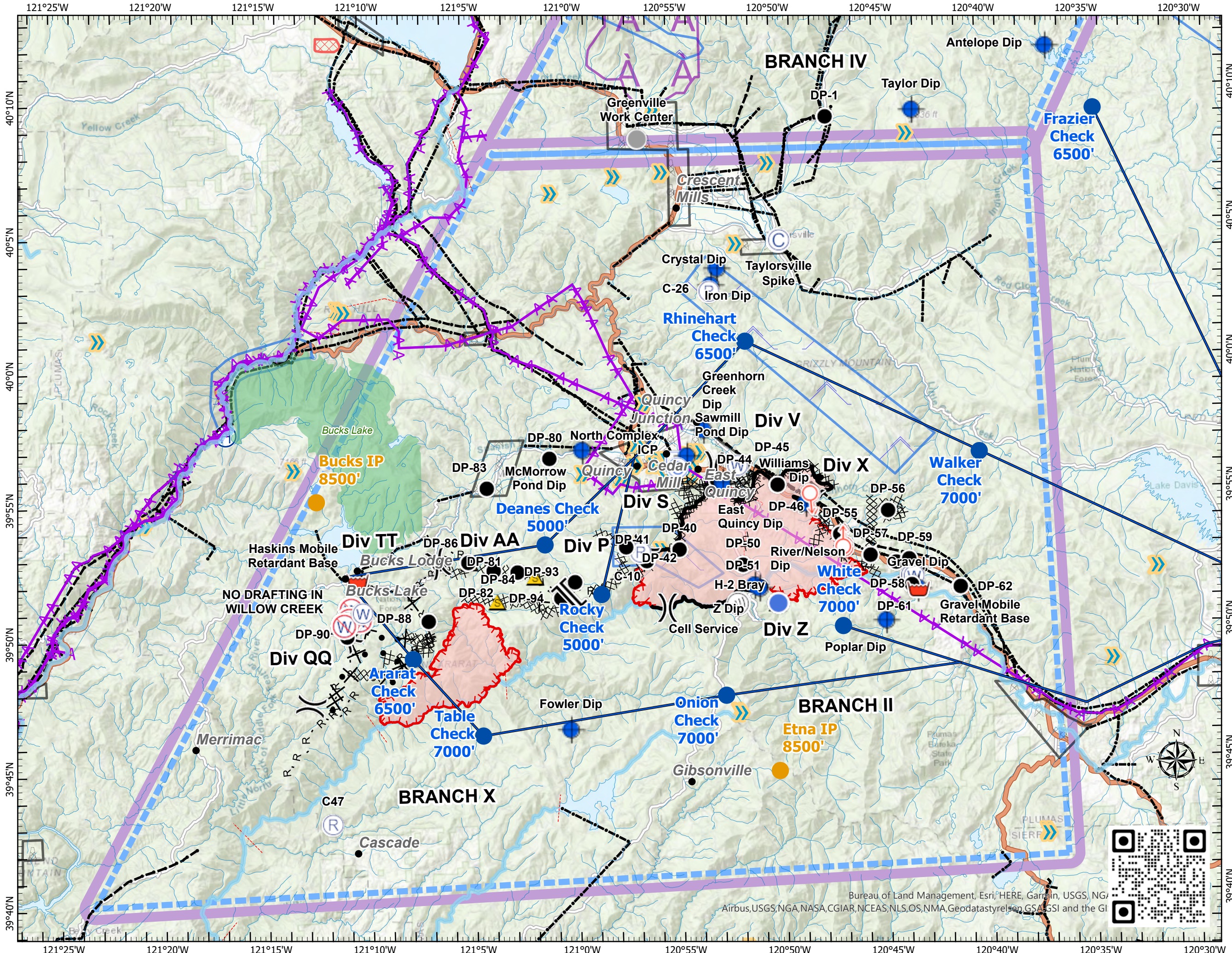
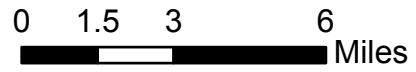
# Pilot Map

## North Complex

### CA-PNF-001308

8/30/2020

- Camp
- Dip Site
- Drop Point
- Helispot
- Incident Command Post
- Internet Access
- Repeater
- Retardant/Mud Pit
- Safety Zone
- Spot Fire
- Staging Area
- Water Source
- Restricted Water Source
- Other
- Division Break
- Branch Break
- Check Point
- Initial Point
- Helicopter Routes\_North
- Aerial Hazard
- Powerline
- Telephone wires
- Airport
- Helibase
- Hangglide/Paraglide
- Jettison
- Powerline
- Turbulence
- Uncontrolled Fire Edge
- Contained Line
- Completed Dozer Line
- Completed Hand Line
- Road as Completed Line
- Access or Improved Road
- Proposed Dozer Line
- Wildfire Daily Fire Perimeter
- TFR



Bureau of Land Management, Esri, HERE, Garmin, USGS, NGI, Airbus, USGS, NGA, NASA, CGIAR, NCEAS, NLS, OS, NMA, Geodatastyrelsen, GSA, GSI and the GI

Incident Name	Feature	LatWGS84 DDM	LongWGS84 DDM
Bear	Drop Point	+39° 50.57897694'	-121° 07.07084898'
Bear	Drop Point	+39° 52.71620430'	-121° 06.51414300'
Bear	Drop Point	+39° 55.48950858'	-121° 04.13551566'
Bear	Drop Point	+39° 56.55415902'	-121° 01.07964162'
Bear	Dip Site	+39° 46.43670042'	-121° 00.31732968'
Bear	Retardant/Mud Pit	+39° 52.12910772'	-121° 10.47001884'
Bear	Drop Point	+39° 51.93583134'	-120° 59.97194304'
Bear	Safety Zone	+39° 52.75264326'	-121° 05.08871682'
Bear	Safety Zone	+39° 51.27701784'	-121° 03.73986312'
Bear	Drop Point	+39° 51.36168660'	-121° 00.65315418'
Bear	Drop Point	+39° 52.35382254'	-121° 02.73341676'
Bear	Drop Point	+39° 52.41994020'	-121° 03.89278494'
Bear	Drop Point	+39° 52.75031094'	-121° 05.10090390'
Bear	Branch Break	+39° 51.44907426'	-121° 00.24909150'
Bear	Division Break	+39° 52.72104762'	-121° 06.52931316'
Bear	Division Break	+39° 50.07149964'	-121° 11.03028018'
Bear	Division Break	+39° 47.54387796'	-121° 12.81097596'
Bear	Drop Point	+39° 50.07149964'	-121° 11.03028018'
Bear	Safety Zone	+39° 52.16536194'	-121° 01.88211186'
Bear	Safety Zone	+39° 50.75510976'	-121° 10.31910738'
Bear	Restricted Water Source	+39° 50.67790854'	-121° 10.39448904'
Bear	Restricted Water Source	+39° 51.07152090'	-121° 10.80729330'
Bear	Restricted Water Source	+39° 50.69568048'	-121° 10.91629716'
Bear	Restricted Water Source	+39° 50.47971438'	-121° 11.15546352'
Bear	Water Source	+39° 50.93151444'	-121° 10.25867982'
Claremont	Drop Point	+39° 53.07212124'	-120° 54.87357408'
Claremont	Division Break	+39° 53.13932430'	-120° 56.60709072'
Claremont	Division Break	+39° 56.13773736'	-120° 53.11481364'
Claremont	Division Break	+39° 50.89927290'	-120° 55.50844710'
Claremont	Division Break	+39° 51.93964674'	-120° 43.80984834'
Claremont	Internet Access	+39° 51.01734420'	-120° 52.08403332'
Claremont	Drop Point	+39° 52.45701702'	-120° 51.81195714'
Claremont	Division Break	+39° 54.73758942'	-120° 48.40429572'
Claremont	Drop Point	+39° 56.23059102'	-120° 51.72971802'
Claremont	Drop Point	+39° 53.50315596'	-120° 47.08615194'
Claremont	Incident Command Post	+39° 56.34543456'	-120° 54.90268752'
Claremont	Drop Point	+39° 55.60324944'	-120° 52.97197494'
Claremont	Camp	+40° 04.51038666'	-120° 49.71536076'
Claremont	Other	+40° 08.38330872'	-120° 56.48821428'
Claremont	Drop Point	+39° 51.61604202'	-120° 50.99886258'
Claremont	Water Source	+39° 56.14982676'	-120° 51.97195332'
Claremont	Dip Site	+39° 55.51999998'	-120° 52.72000002'
Claremont	Dip Site	+39° 51.67000002'	-120° 51.27000000'
Claremont	Dip Site	+39° 51.55999998'	-120° 51.04000002'
Claremont	Dip Site	+39° 56.82690000'	-120° 59.48500002'
Claremont	Dip Site	+39° 57.48499998'	-120° 53.59500000'
Claremont	Dip Site	+39° 56.53240038'	-120° 54.42494346'
Claremont	Drop Point	+39° 52.67875176'	-120° 56.46316164'
Claremont	Dip Site	+39° 54.66199998'	-120° 48.71299998'
Claremont	Dip Site	+40° 02.88317148'	-120° 53.08056894'
Claremont	Drop Point	+39° 55.40343384'	-120° 50.05323222'
Claremont	Drop Point	+39° 54.35247402'	-120° 44.74758642'
Claremont	Water Source	+39° 51.91828242'	-120° 43.69937910'
Claremont	Water Source	+39° 51.89379006'	-120° 43.55402046'
Claremont	Dip Site	+39° 51.41428638'	-120° 43.38350928'
Claremont	Drop Point	+39° 52.70542416'	-120° 45.63363954'
Claremont	Drop Point	+39° 52.42412916'	-120° 44.40381588'
Claremont	Drop Point	+39° 52.53342738'	-120° 43.76998500'
Claremont	Drop Point	+39° 51.46015860'	-120° 41.32024902'
Claremont	Spot Fire	+39° 54.85914924'	-120° 48.41748624'
Claremont	Spot Fire	+39° 54.90075306'	-120° 48.50649444'
Claremont	Drop Point	+39° 51.56900892'	-120° 43.66672578'
Claremont	Repeater	+39° 52.99864716'	-120° 56.75246190'
Claremont	Repeater	+39° 43.07597850'	-121° 11.89662960'
Claremont	Repeater	+40° 02.65648158'	-120° 53.16962934'
Claremont	Dip Site	+39° 50.25300498'	-120° 44.95700136'
Claremont	Safety Zone	+39° 50.99512938'	-120° 50.20123728'
Claremont	Helispot	+39° 50.99157516'	-120° 50.13047976'
Claremont	Drop Point	+39° 53.21050230'	-120° 57.45293634'
Claremont	Staging Area	+39° 56.10834138'	-120° 54.86928636'
Claremont	Spot Fire	+39° 53.28462162'	-120° 46.86430032'
Claremont	Spot Fire	+39° 53.16296184'	-120° 46.85420874'
Claremont	Spot Fire	+39° 53.22967848'	-120° 46.94166924'
Iron	Dip Site	+40° 03.49999998'	-120° 52.77000000'