

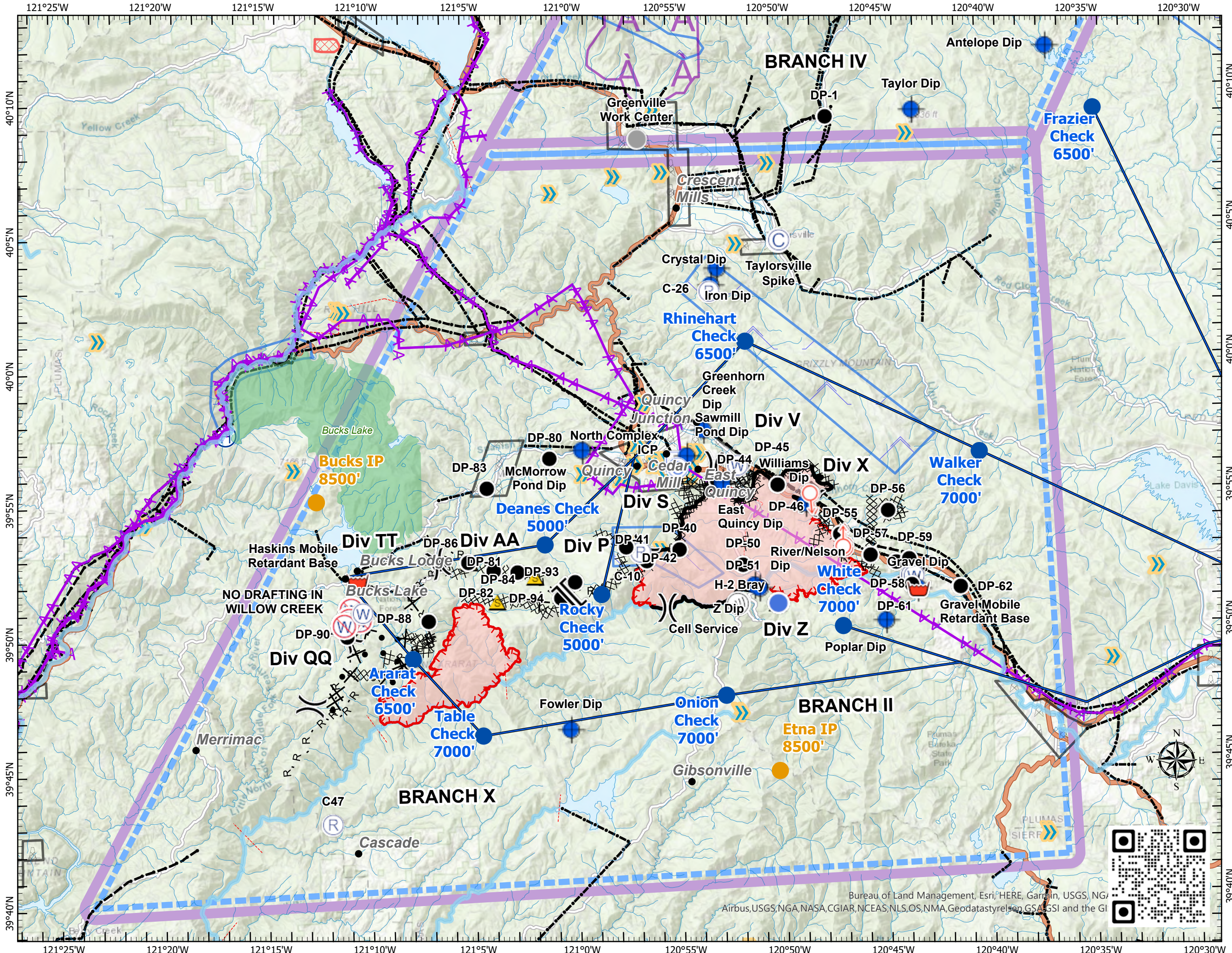
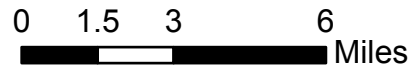
Pilot Map

North Complex

CA-PNF-001308

8/30/2020

- Camp
- Dip Site
- Drop Point
- Helispot
- Incident Command Post
- Internet Access
- Repeater
- Retardant/Mud Pit
- Safety Zone
- Spot Fire
- Staging Area
- Water Source
- Restricted Water Source
- Other
- Division Break
- Branch Break
- Check Point
- Initial Point
- Helicopter Routes_North
- Aerial Hazard
- Powerline
- Telephone wires
- Airport
- Helibase
- Hangglide/Paraglide
- Jettison
- Powerline
- Turbulence
- Uncontrolled Fire Edge
- Contained Line
- Completed Dozer Line
- Completed Hand Line
- Road as Completed Line
- Access or Improved Road
- Proposed Dozer Line
- Wildfire Daily Fire Perimeter
- TFR



Incident Name	Feature	LatWGS84 DDM	LongWGS84 DDM
Bear	Drop Point	+39° 50.57897694'	-121° 07.07084898'
Bear	Drop Point	+39° 52.71620430'	-121° 06.51414300'
Bear	Drop Point	+39° 55.48950858'	-121° 04.13551566'
Bear	Drop Point	+39° 56.55415902'	-121° 01.07964162'
Bear	Dip Site	+39° 46.43670042'	-121° 00.31732968'
Bear	Retardant/Mud Pit	+39° 52.12910772'	-121° 10.47001884'
Bear	Drop Point	+39° 51.93583134'	-120° 59.97194304'
Bear	Safety Zone	+39° 52.75264326'	-121° 05.08871682'
Bear	Safety Zone	+39° 51.27701784'	-121° 03.73986312'
Bear	Drop Point	+39° 51.36168660'	-121° 00.65315418'
Bear	Drop Point	+39° 52.35382254'	-121° 02.73341676'
Bear	Drop Point	+39° 52.41994020'	-121° 03.89278494'
Bear	Drop Point	+39° 52.75031094'	-121° 05.10090390'
Bear	Branch Break	+39° 51.44907426'	-121° 00.24909150'
Bear	Division Break	+39° 52.72104762'	-121° 06.52931316'
Bear	Division Break	+39° 50.07149964'	-121° 11.03028018'
Bear	Division Break	+39° 47.54387796'	-121° 12.81097596'
Bear	Drop Point	+39° 50.07149964'	-121° 11.03028018'
Bear	Safety Zone	+39° 52.16536194'	-121° 01.88211186'
Bear	Safety Zone	+39° 50.75510976'	-121° 10.31910738'
Bear	Restricted Water Source	+39° 50.67790854'	-121° 10.39448904'
Bear	Restricted Water Source	+39° 51.07152090'	-121° 10.80729330'
Bear	Restricted Water Source	+39° 50.69568048'	-121° 10.91629716'
Bear	Restricted Water Source	+39° 50.47971438'	-121° 11.15546352'
Bear	Water Source	+39° 50.93151444'	-121° 10.25867982'
Claremont	Drop Point	+39° 53.07212124'	-120° 54.87357408'
Claremont	Division Break	+39° 53.13932430'	-120° 56.60709072'
Claremont	Division Break	+39° 56.13773736'	-120° 53.11481364'
Claremont	Division Break	+39° 50.89927290'	-120° 55.50844710'
Claremont	Division Break	+39° 51.93964674'	-120° 43.80984834'
Claremont	Internet Access	+39° 51.01734420'	-120° 52.08403332'
Claremont	Drop Point	+39° 52.45701702'	-120° 51.81195714'
Claremont	Division Break	+39° 54.73758942'	-120° 48.40429572'
Claremont	Drop Point	+39° 56.23059102'	-120° 51.72971802'
Claremont	Drop Point	+39° 53.50315596'	-120° 47.08615194'
Claremont	Incident Command Post	+39° 56.34543456'	-120° 54.90268752'
Claremont	Drop Point	+39° 55.60324944'	-120° 52.97197494'
Claremont	Camp	+40° 04.51038666'	-120° 49.71536076'
Claremont	Other	+40° 08.38330872'	-120° 56.48821428'
Claremont	Drop Point	+39° 51.61604202'	-120° 50.99886258'
Claremont	Water Source	+39° 56.14982676'	-120° 51.97195332'
Claremont	Dip Site	+39° 55.51999998'	-120° 52.72000002'
Claremont	Dip Site	+39° 51.67000002'	-120° 51.27000000'
Claremont	Dip Site	+39° 51.55999998'	-120° 51.04000002'
Claremont	Dip Site	+39° 56.82690000'	-120° 59.48500002'
Claremont	Dip Site	+39° 57.48499998'	-120° 53.59500000'
Claremont	Dip Site	+39° 56.53240038'	-120° 54.42494346'
Claremont	Drop Point	+39° 52.67875176'	-120° 56.46316164'
Claremont	Dip Site	+39° 54.66199998'	-120° 48.71299998'
Claremont	Dip Site	+40° 02.88317148'	-120° 53.08056894'
Claremont	Drop Point	+39° 55.40343384'	-120° 50.05323222'
Claremont	Drop Point	+39° 54.35247402'	-120° 44.74758642'
Claremont	Water Source	+39° 51.91828242'	-120° 43.69937910'
Claremont	Water Source	+39° 51.89379006'	-120° 43.55402046'
Claremont	Dip Site	+39° 51.41428638'	-120° 43.38350928'
Claremont	Drop Point	+39° 52.70542416'	-120° 45.63363954'
Claremont	Drop Point	+39° 52.42412916'	-120° 44.40381588'
Claremont	Drop Point	+39° 52.53342738'	-120° 43.76998500'
Claremont	Drop Point	+39° 51.46015860'	-120° 41.32024902'
Claremont	Spot Fire	+39° 54.85914924'	-120° 48.41748624'
Claremont	Spot Fire	+39° 54.90075306'	-120° 48.50649444'
Claremont	Drop Point	+39° 51.56900892'	-120° 43.66672578'
Claremont	Repeater	+39° 52.99864716'	-120° 56.75246190'
Claremont	Repeater	+39° 43.07597850'	-121° 11.89662960'
Claremont	Repeater	+40° 02.65648158'	-120° 53.16962934'
Claremont	Dip Site	+39° 50.25300498'	-120° 44.95700136'
Claremont	Safety Zone	+39° 50.99512938'	-120° 50.20123728'
Claremont	Helispot	+39° 50.99157516'	-120° 50.13047976'
Claremont	Drop Point	+39° 53.21050230'	-120° 57.45293634'
Claremont	Staging Area	+39° 56.10834138'	-120° 54.86928636'
Claremont	Spot Fire	+39° 53.28462162'	-120° 46.86430032'
Claremont	Spot Fire	+39° 53.16296184'	-120° 46.85420874'
Claremont	Spot Fire	+39° 53.22967848'	-120° 46.94166924'
Iron	Dip Site	+40° 03.49999998'	-120° 52.77000000'