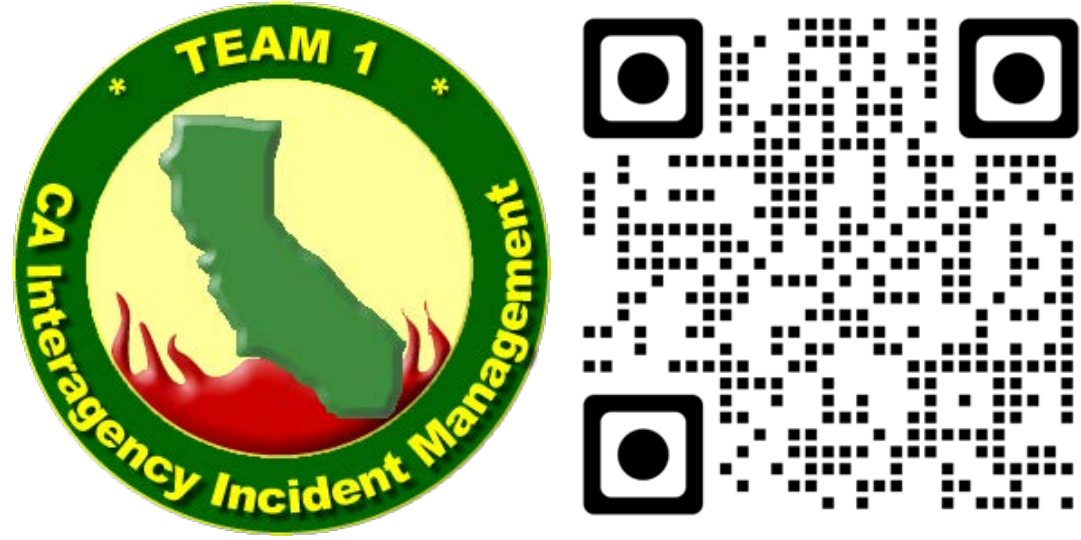


Operations

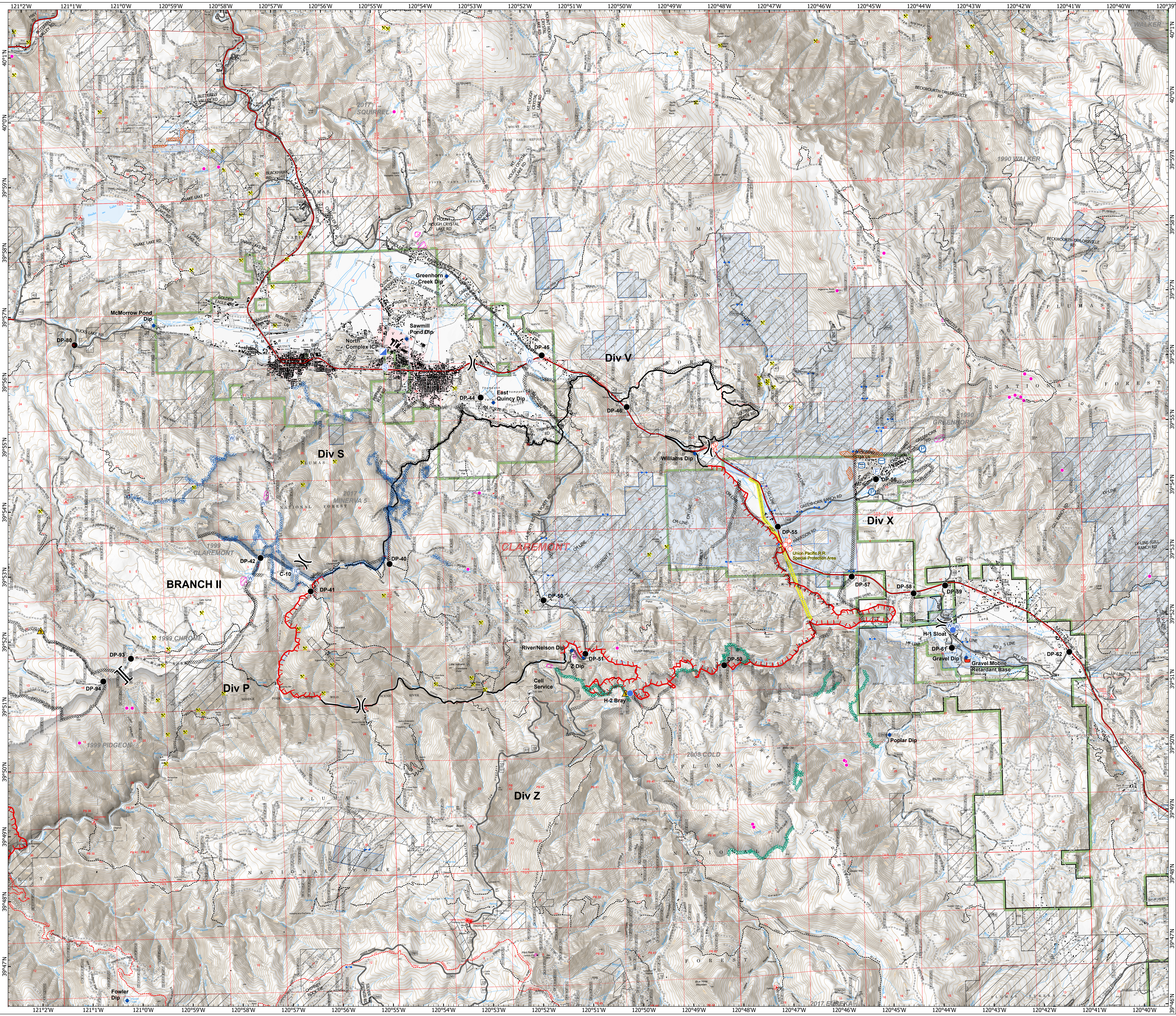
Branch II

Claremont Fire

North Complex
 CA-PNF-001308
 September 1, 2020



- Uncontrolled Fire Edge
- Contained Fire Edge
- Completed Dozer Line
- Completed Hand Line
- Road as Completed Line
- Branch Break
- Division Break
- Incident Command Post
- Staging Area
- Drop Point
- Helispot
- Dip Site
- Retardant/Mud Pit
- Water Source
- Repeater
- Cell Service
- Spot Fire
- Safety Zone
- Fire Station
- Pump
- Water Tank
- Structure
- Mine
- Mineshaft
- MANDATORY EXCLUSION AREA
- MANDATORY EXCLUSION AREA
- Union Pacific Special Protection
- Historic Fire (1990-2019; 100+ acres)
- Dozer Lines - 2017 Minerva Fire
- Dozer Lines - 2008 Cold Fire
- National Forest Boundary
- Non-FS Lands within Forest Boundary
- Sierra Pacific Industries
- SPI Fuelbreak
- SPI Gate



Approximate fire perimeter as of 8/31 @ 1015 hrs

NAD83 UTM Zone 10N
 Contour Interval 80 ft.

0 0.5 1 2 3 Miles