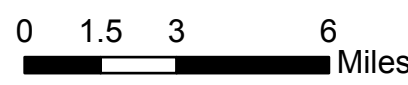
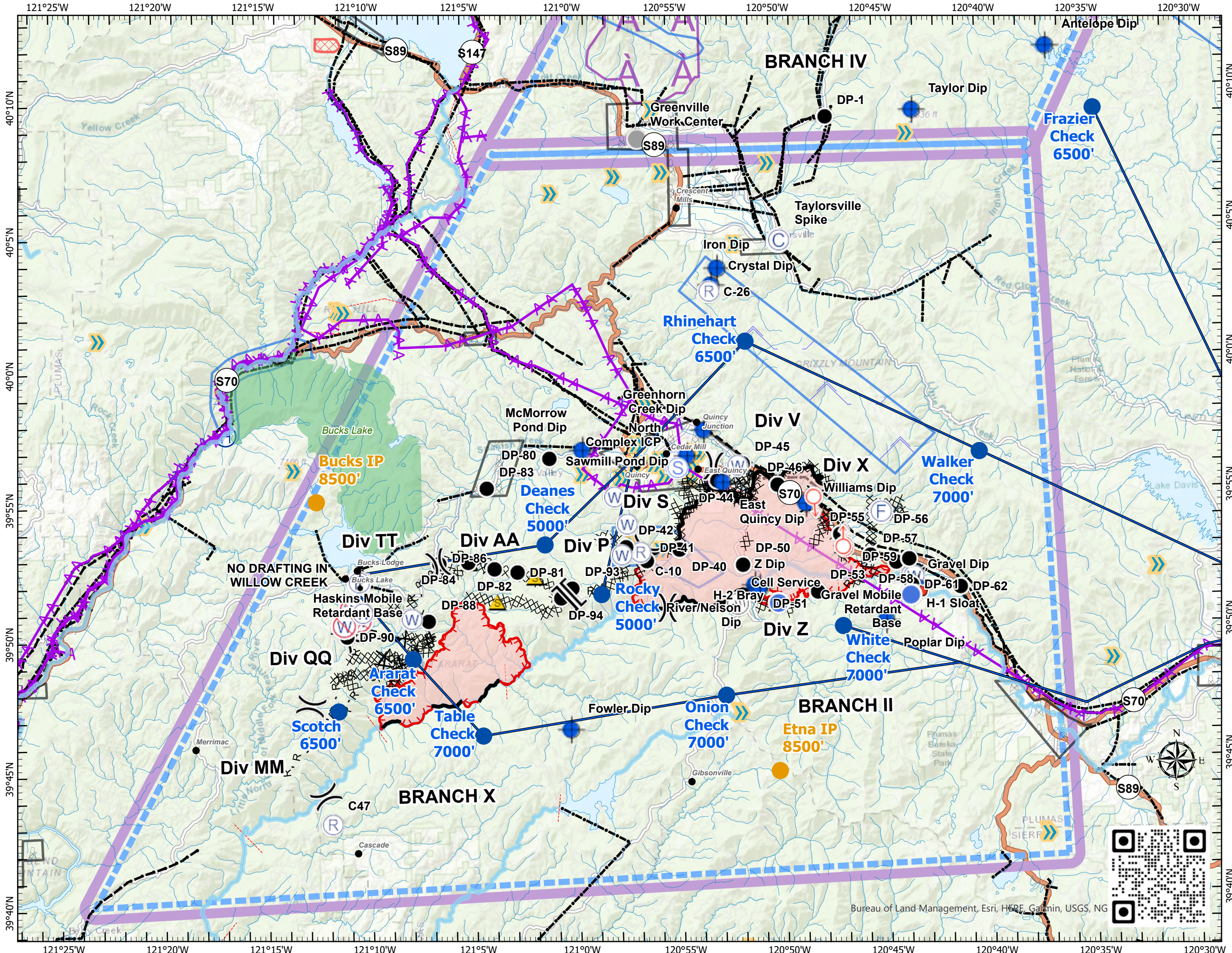


Pilot Map

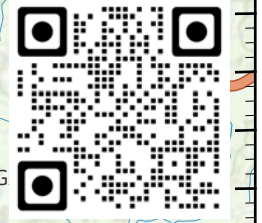
North Complex CA-PNF-001308

9/01/2020

- Camp
- Dip Site
- Drop Point
- Fire Station
- Gate
- Helispot
- Incident Command Post
- Internet Access
- Repeater
- Retardant/Mud Pit
- Safety Zone
- Spot Fire
- Staging Area
- Water Source
- Restricted Water Source
- Other
- Division Break
- Branch Break
- Check Point
- Initial Point
- Helicopter Routes North
- Aerial Hazard
- Powerline
- Telephone wires
- Airport
- Helibase
- Hangglide/Paraglide
- Jettison
- Powerline
- Turbulence
- Uncontrolled Fire Edge
- Contained Line
- Completed Dozer Line
- Completed Hand Line
- Road as Completed Line
- Access or Improved Road
- Proposed Dozer Line
- Wildfire Daily Fire Perimeter
- TFR
- Highways_100k_USA



Bureau of Land Management, Esri, HERE, Garmin, USGS, NG



Incident Name	Feature Name	Lat WGS84_DDM	Long WGS84_DDM
Bear	DP-80	+39° 56.55415902'	-121° 01.07964162'
Bear	DP-81	+39° 52.35382254'	-121° 02.73341676'
Bear	DP-82	+39° 52.48805514'	-121° 03.84083736'
Bear	DP-83	+39° 55.48950858'	-121° 04.13551566'
Bear	DP-84	+39° 52.75031094'	-121° 05.10090390'
Bear	DP-86	+39° 52.71620430'	-121° 06.51414300'
Bear	DP-88	+39° 50.57897694'	-121° 07.07084898'
Bear	DP-90	+39° 50.07149964'	-121° 11.03028018'
Bear	DP-93	+39° 51.70330974'	-121° 00.09103950'
Bear	DP-94	+39° 51.36168660'	-121° 00.65315418'
Bear	Fowler Dip	+39° 46.43670042'	-121° 00.31732968'
Bear	Haskins Mobile Retardant Base	+39° 52.12910772'	-121° 10.47001884'
Claremont	C-10	+39° 52.99864716'	-120° 56.75246190'
Claremont	C-26	+40° 02.65648158'	-120° 53.16962934'
Claremont	C47	+39° 43.07597850'	-121° 11.89662960'
Claremont	Cell Service	+39° 51.01734420'	-120° 52.08403332'
Claremont	Crystal Dip	+40° 02.88317148'	-120° 53.08056894'
Claremont	DP-40	+39° 53.07212124'	-120° 54.87357408'
Claremont	DP-41	+39° 52.67875176'	-120° 56.46316164'
Claremont	DP-42	+39° 53.21050230'	-120° 57.45293634'
Claremont	DP-44	+39° 55.60324944'	-120° 52.97197494'
Claremont	DP-45	+39° 56.23059102'	-120° 51.72971802'
Claremont	DP-46	+39° 55.40343384'	-120° 50.05323222'
Claremont	DP-50	+39° 52.45701702'	-120° 51.81195714'
Claremont	DP-51	+39° 51.61604202'	-120° 50.99886258'
Claremont	DP-53	+39° 51.38858568'	-120° 48.22826214'
Claremont	DP-55	+39° 53.50315596'	-120° 47.08615194'
Claremont	DP-56	+39° 54.19696902'	-120° 45.09963798'
Claremont	DP-57	+39° 52.70542416'	-120° 45.63363954'
Claremont	DP-58	+39° 52.42412916'	-120° 44.40381588'
Claremont	DP-59	+39° 52.53342738'	-120° 43.76998500'
Claremont	DP-61	+39° 51.56900892'	-120° 43.66672578'
Claremont	DP-62	+39° 51.46015860'	-120° 41.32024902'
Claremont	East Quincy Dip	+39° 55.51999998'	-120° 52.72000002'
Claremont	Gravel Dip	+39° 51.41428638'	-120° 43.38350928'
Claremont	Greenhorn Creek Dip	+39° 57.48499998'	-120° 53.59500000'
Claremont	Greenville Work Center	+40° 08.38330872'	-120° 56.48821428'
Claremont	H-1 Sloat	+39° 51.19000002'	-120° 43.72000002'
Claremont	H-2 Bray	+39° 50.99157516'	-120° 50.12378628'
Claremont	McMorrow Pond Dip	+39° 56.82690000'	-120° 59.48500002'
Claremont	North Complex ICP	+39° 56.34543456'	-120° 54.90268752'
Claremont	Poplar Dip	+39° 50.25300498'	-120° 44.95700136'
Claremont	River/Nelson Dip	+39° 51.67000002'	-120° 51.27000000'
Claremont	Sawmill Pond Dip	+39° 56.53240038'	-120° 54.42494346'
Claremont	Taylorville Spike	+40° 04.51038666'	-120° 49.71536076'
Claremont	Williams Dip	+39° 54.66199998'	-120° 48.71299998'
Claremont	Z Dip	+39° 51.55999998'	-120° 51.04000002'
Iron	Iron Dip	+40° 03.49999998'	-120° 52.77000000'