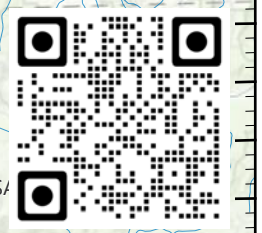
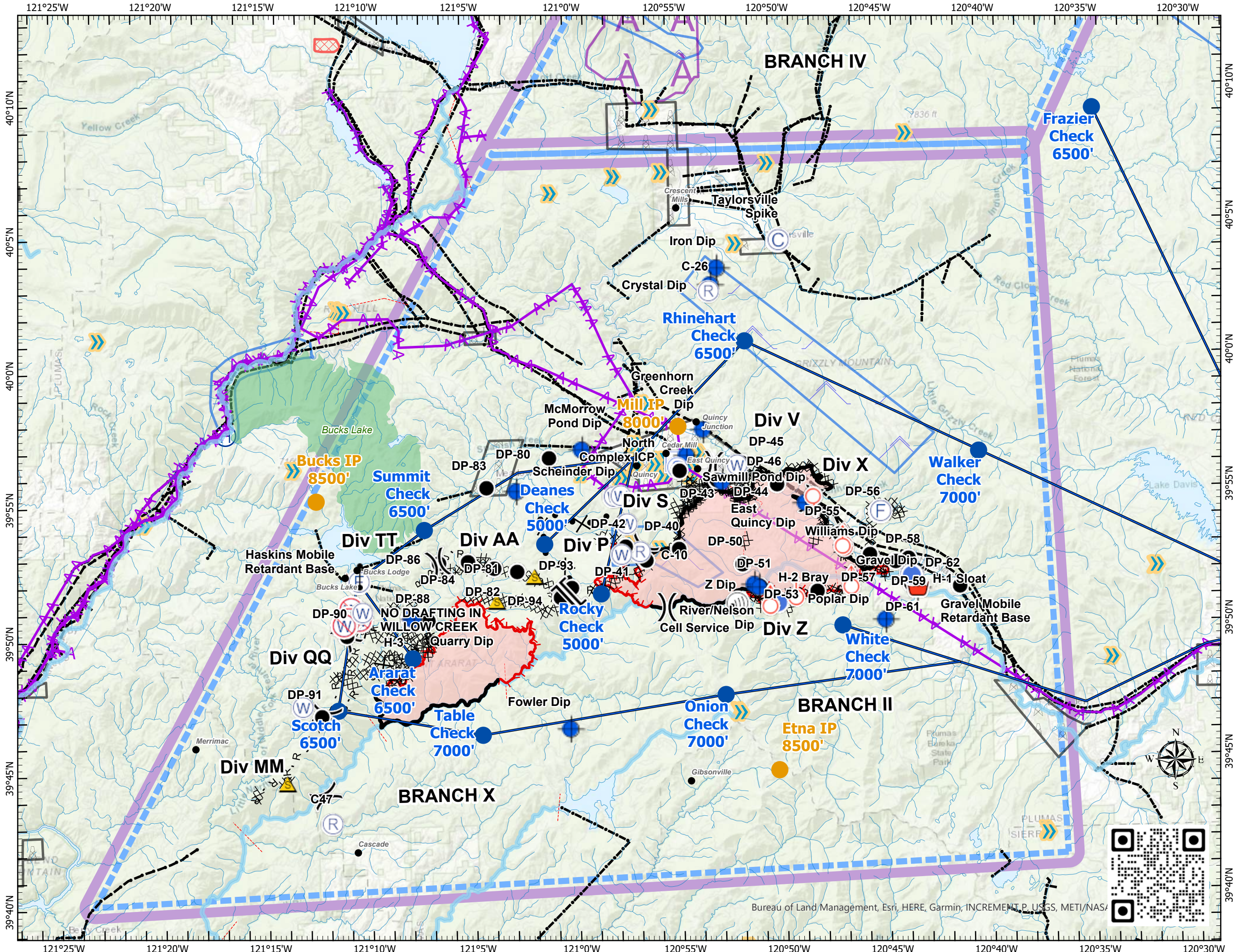
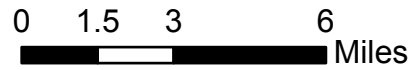


Pilot Map

North Complex
CA-PNF-001308
9/03/2020

- Camp
- Dip Site
- Drop Point
- Fire Station
- Gate
- Helispot
- Incident Command Post
- Internet Access
- Repeater
- Retardant/Mud Pit
- Safety Zone
- Spot Fire
- Staging Area
- Water Source
- Restricted Water Source
- Division Break
- Branch Break
- Check Point
- Initial Point
- Helicopter Routes_North
- Aerial Hazard
- Powerline
- Telephone wires
- Airport
- Helibase
- Hangglide/Paraglide
- Jettison
- Powerline
- Turbulence
- Uncontrolled Fire Edge
- Contained Line
- Completed Dozer Line
- Completed Hand Line
- Road as Completed Line
- Access or Improved Road
- Proposed Dozer Line
- Wildfire Daily Fire Perimeter
- TFR



Incident Name	Feature Category	Label	Lat	Long
Bear	Dip Site	Fowler Dip	39° 46.437' N	121° 0.317' W
Bear	Dip Site	Quarry Dip	39° 50.636' N	121° 7.794' W
Bear	Dip Site	Scheinder Dip	39° 55.327' N	121° 2.700' W
Bear	Drop Point	DP-80	39° 56.554' N	121° 1.080' W
Bear	Drop Point	DP-81	39° 52.354' N	121° 2.734' W
Bear	Drop Point	DP-82	39° 52.488' N	121° 3.841' W
Bear	Drop Point	DP-83	39° 55.490' N	121° 4.136' W
Bear	Drop Point	DP-84	39° 52.750' N	121° 5.101' W
Bear	Drop Point	DP-86	39° 52.716' N	121° 6.514' W
Bear	Drop Point	DP-88	39° 50.579' N	121° 7.071' W
Bear	Drop Point	DP-90	39° 50.072' N	121° 11.030' W
Bear	Drop Point	DP-91	39° 47.079' N	121° 12.312' W
Bear	Drop Point	DP-93	39° 51.703' N	121° 0.091' W
Bear	Drop Point	DP-94	39° 51.362' N	121° 0.653' W
Bear	Fire Station		39° 52.077' N	121° 10.399' W
Bear	Helispot	H-3	39° 50.700' N	121° 7.892' W
Bear	Restricted Water Source	NO DRAFTING IN WILLOW CREEK	39° 51.072' N	121° 10.807' W
Bear	Restricted Water Source		39° 50.678' N	121° 10.395' W
Bear	Restricted Water Source		39° 50.696' N	121° 10.916' W
Bear	Restricted Water Source		39° 50.480' N	121° 11.156' W
Bear	Retardant/Mud Pit	Haskins Mobile Retardant Base	39° 52.129' N	121° 10.470' W
Bear	Safety Zone		39° 52.753' N	121° 5.089' W
Bear	Safety Zone		39° 51.277' N	121° 3.740' W
Bear	Safety Zone		39° 52.165' N	121° 1.882' W
Bear	Safety Zone		39° 44.621' N	121° 14.038' W
Bear	Water Source		39° 50.932' N	121° 10.259' W
Bear	Water Source		39° 50.632' N	121° 7.882' W
Bear	Water Source		39° 47.448' N	121° 13.236' W
Claremont	Camp	Taylorsville Spike	40° 4.510' N	120° 49.715' W
Claremont	Dip Site	Crystal Dip	40° 2.883' N	120° 53.081' W
Claremont	Dip Site	East Quincy Dip	39° 55.520' N	120° 52.720' W
Claremont	Dip Site	Gravel Dip	39° 51.414' N	120° 43.384' W
Claremont	Dip Site	Greenhorn Creek Dip	39° 57.485' N	120° 53.595' W
Claremont	Dip Site	McMorrow Pond Dip	39° 56.827' N	120° 59.485' W
Claremont	Dip Site	Poplar Dip	39° 50.253' N	120° 44.957' W
Claremont	Dip Site	River/Nelson Dip	39° 51.670' N	120° 51.270' W
Claremont	Dip Site	Sawmill Pond Dip	39° 56.532' N	120° 54.425' W
Claremont	Dip Site	Sloat Dip	39° 51.894' N	120° 43.563' W
Claremont	Dip Site	Williams Dip	39° 54.662' N	120° 48.713' W
Claremont	Dip Site	Z Dip	39° 51.560' N	120° 51.040' W
Claremont	Dip Site		39° 51.689' N	120° 43.963' W
Claremont	Drop Point	DP-40	39° 53.072' N	120° 54.874' W
Claremont	Drop Point	DP-41	39° 52.679' N	120° 56.463' W
Claremont	Drop Point	DP-42	39° 53.211' N	120° 57.453' W
Claremont	Drop Point	DP-43	39° 55.991' N	120° 54.753' W
Claremont	Drop Point	DP-44	39° 55.603' N	120° 52.972' W
Claremont	Drop Point	DP-45	39° 56.231' N	120° 51.730' W
Claremont	Drop Point	DP-46	39° 55.404' N	120° 50.053' W
Claremont	Drop Point	DP-50	39° 52.457' N	120° 51.812' W
Claremont	Drop Point	DP-51	39° 51.616' N	120° 50.999' W
Claremont	Drop Point	DP-53	39° 51.389' N	120° 48.228' W
Claremont	Drop Point	DP-55	39° 53.503' N	120° 47.086' W
Claremont	Drop Point	DP-56	39° 54.197' N	120° 45.100' W
Claremont	Drop Point	DP-57	39° 52.706' N	120° 45.634' W
Claremont	Drop Point	DP-58	39° 52.424' N	120° 44.404' W
Claremont	Drop Point	DP-59	39° 52.534' N	120° 43.770' W
Claremont	Drop Point	DP-61	39° 51.569' N	120° 43.667' W
Claremont	Drop Point	DP-62	39° 51.460' N	120° 41.320' W
Claremont	Fire Station		39° 54.320' N	120° 45.083' W
Claremont	Helispot	H-1 Sloat	39° 51.891' N	120° 43.628' W
Claremont	Helispot	H-2 Bray	39° 50.992' N	120° 50.124' W
Claremont	Incident Command Post	North Complex ICP	39° 56.346' N	120° 54.903' W
Claremont	Repeater	C-10	39° 52.999' N	120° 56.753' W
Claremont	Repeater	C-26	40° 2.657' N	120° 53.170' W
Claremont	Repeater	C47	39° 43.076' N	121° 11.897' W
Claremont	Retardant/Mud Pit	Gravel Mobile Retardant Base	39° 51.372' N	120° 43.363' W
Claremont	Safety Zone		39° 51.899' N	120° 43.687' W
Claremont	Safety Zone		39° 51.391' N	120° 43.434' W
Claremont	Safety Zone		39° 50.995' N	120° 50.210' W
Claremont	Safety Zone		39° 53.009' N	120° 55.054' W
Claremont	Staging Area		39° 56.108' N	120° 54.869' W
Claremont	Water Source		39° 56.150' N	120° 51.972' W
Claremont	Water Source		39° 51.918' N	120° 43.699' W
Claremont	Water Source		39° 51.894' N	120° 43.554' W
Claremont	Water Source		39° 53.982' N	120° 45.482' W
Claremont	Water Source		39° 54.033' N	120° 45.418' W
Claremont	Water Source		39° 54.116' N	120° 45.299' W
Claremont	Water Source		39° 54.125' N	120° 45.425' W
Claremont	Water Source		39° 54.203' N	120° 45.441' W
Claremont	Water Source		39° 54.207' N	120° 45.323' W
Claremont	Water Source		39° 54.413' N	120° 45.420' W
Claremont	Water Source		39° 54.495' N	120° 45.418' W
Claremont	Water Source		39° 54.427' N	120° 45.326' W
Claremont	Water Source		39° 54.519' N	120° 45.265' W
Claremont	Water Source		39° 54.518' N	120° 45.140' W
Claremont	Water Source		39° 54.360' N	120° 45.260' W
Claremont	Water Source		39° 54.442' N	120° 45.187' W
Claremont	Water Source		39° 54.407' N	120° 45.124' W
Claremont	Water Source		39° 54.287' N	120° 45.191' W
Claremont	Water Source		39° 54.258' N	120° 45.051' W
Claremont	Water Source		39° 54.055' N	120° 57.376' W
Claremont	Water Source		39° 52.906' N	120° 57.665' W
Claremont	Water Source		39° 55.071' N	120° 57.971' W
Claremont	Water Source		39° 55.099' N	120° 57.638' W