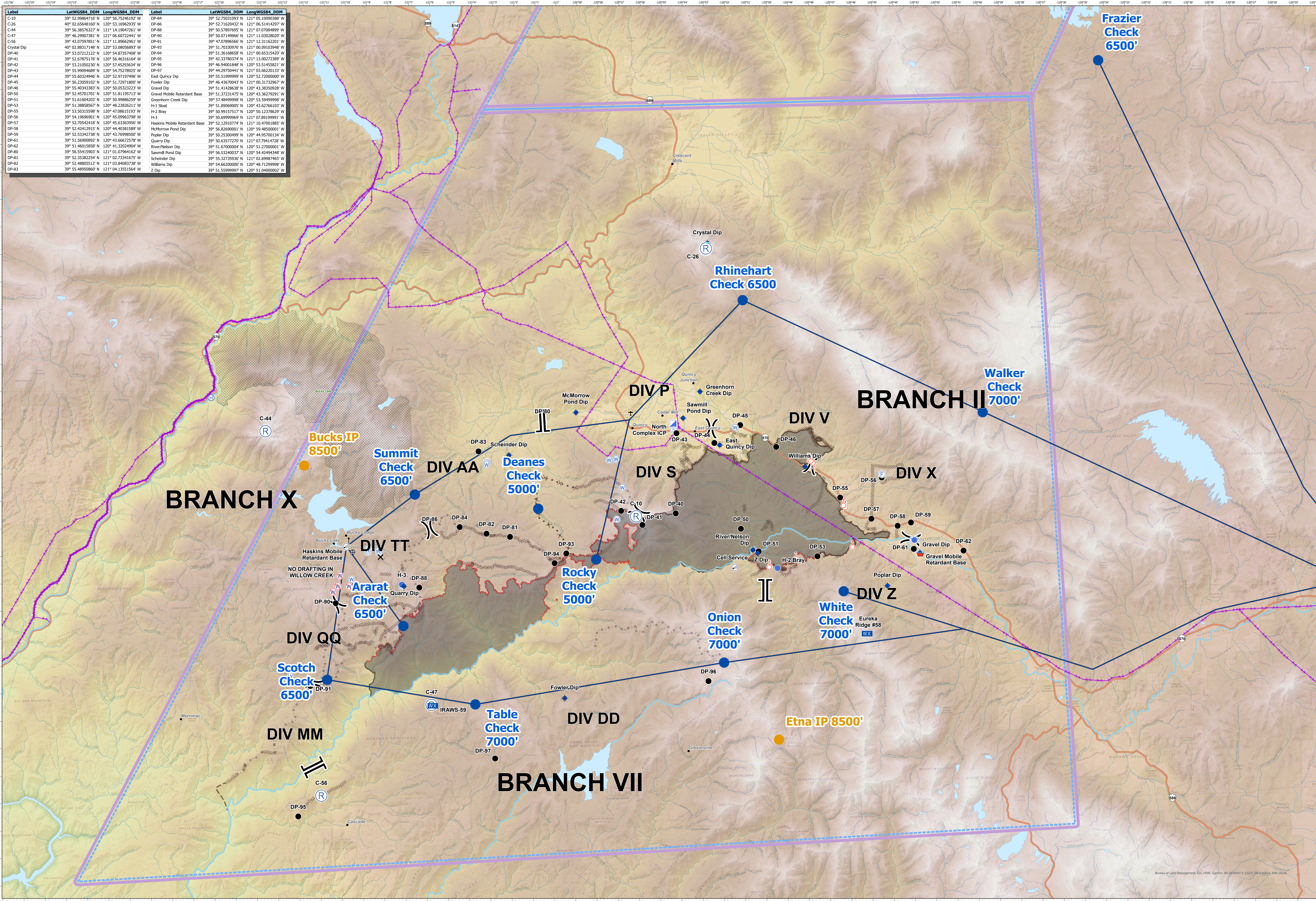
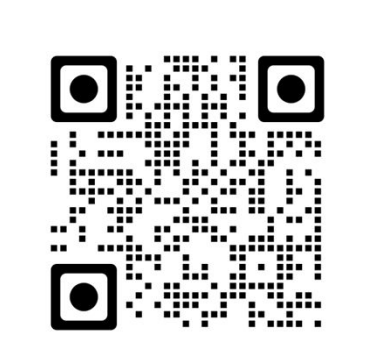


| Label | LatWGS84_DDM | LongWGS84_DDM | Label | LatWGS84_DDM | LongWGS84_DDM |
|-------------|--------------------|----------------------|-------------------------------|--------------------|---------------------|
| C-10 | 39° 52.99864716' N | 120° 56.75246192' W | DP-84 | 39° 52.75031093' N | 121° 06.10090388' W |
| C-26 | 40° 02.63648160' N | 120° 53.16962935' W | DP-86 | 39° 52.71620432' N | 121° 06.51414297' W |
| C-44 | 39° 56.38576322' N | 121° 14.19947261' W | DP-88 | 39° 50.57897699' N | 121° 07.07384899' W |
| C-47 | 39° 46.29907381' N | 121° 06.60722441' W | DP-90 | 39° 50.07149966' N | 121° 11.03028020' W |
| C-56 | 39° 43.07597851' N | 121° 11.89626261' W | DP-91 | 39° 43.07597851' N | 121° 11.89626261' W |
| Crystal Dip | 40° 02.88317148' N | 120° 53.08656893' W | DP-93 | 39° 51.70350976' N | 121° 00.09103948' W |
| DP-40 | 39° 53.07212222' N | 120° 54.87357408' W | DP-94 | 39° 51.36168659' N | 121° 00.65315438' W |
| DP-41 | 39° 52.67875176' N | 120° 56.46316164' W | DP-95 | 39° 42.33780374' N | 121° 13.00272389' W |
| DP-42 | 39° 53.21050230' N | 120° 57.45293634' W | DP-96 | 39° 46.94001848' N | 120° 53.51455821' W |
| DP-43 | 39° 55.99094689' N | 120° 54.75278925' W | DP-97 | 39° 44.29750441' N | 121° 03.66220133' W |
| DP-44 | 39° 55.60349446' N | 120° 52.97474961' W | East Quincy Dip | 39° 55.51999999' N | 120° 52.72000000' W |
| DP-45 | 39° 56.23059102' N | 120° 51.72971800' W | Fowler Dip | 39° 46.43670043' N | 121° 00.31732967' W |
| DP-46 | 39° 55.40343383' N | 120° 50.05323223' W | Gravel Dip | 39° 51.41428638' N | 120° 43.38350928' W |
| DP-50 | 39° 52.45701701' N | 120° 51.81195713' W | Gravel Mobile Retardant Base | 39° 51.37231475' N | 120° 43.36279291' W |
| DP-51 | 39° 51.61604203' N | 120° 50.99862659' W | Greenhorn Creek Dip | 39° 57.48499998' N | 120° 53.59499998' W |
| DP-53 | 39° 51.38888561' N | 120° 49.22626211' W | H-1 Stair | 39° 51.89000000' N | 120° 43.62766103' W |
| DP-55 | 39° 53.50315598' N | 120° 47.088615193' W | H-2 Bray | 39° 50.99157157' N | 120° 50.12378629' W |
| DP-56 | 39° 54.19696901' N | 120° 45.0963798' W | H-3 | 39° 50.69999969' N | 121° 07.89199991' W |
| DP-57 | 39° 52.70542418' N | 120° 45.63363956' W | Haskins Mobile Retardant Base | 39° 52.12910774' N | 121° 10.47001885' W |
| DP-58 | 39° 52.42412915' N | 120° 44.40381589' W | McMorrow Pond Dip | 39° 56.82690001' N | 120° 50.48500001' W |
| DP-59 | 39° 52.53342738' N | 120° 43.76985007' W | Poplar Dip | 39° 50.25300499' N | 120° 44.95700134' W |
| DP-61 | 39° 51.56900892' N | 120° 43.66625278' W | Quarry Dip | 39° 50.63577270' N | 121° 07.79414728' W |
| DP-62 | 39° 51.46013858' N | 120° 41.32024904' W | River/Nelson Dip | 39° 51.67000004' N | 120° 51.27000001' W |
| DP-80 | 39° 56.54159037' N | 121° 01.07941632' W | Sawmill Pond Dip | 39° 56.53240007' N | 120° 54.42496348' W |
| DP-81 | 39° 52.35382554' N | 121° 02.73341675' W | Sawmill Pond Dip | 39° 56.53240007' N | 120° 54.42496348' W |
| DP-82 | 39° 52.48805512' N | 121° 03.84083738' W | Scheinder Dip | 39° 55.32739336' N | 121° 02.69874665' W |
| DP-83 | 39° 55.48950860' N | 121° 04.13551564' W | Williams Dip | 39° 54.66200000' N | 120° 48.71299998' W |
| | | | Z Dip | 39° 51.55999997' N | 120° 51.04000002' W |



Air Operations
 North Complex
 CA-PNF-001308
 September 6, 2020



- Wilderness
- Airport
- Lakes 100k
- Rivers 100k
- Streams 100k
- Highways 100k USA
- Wildfire Daily Fire Perimeter
- Uncontrolled Fire Edge
- Helibase
- Helicopter Routes, North
- Aerial Hazard
- FRR
- Completed Dozer Line
- Completed Hand Line
- Road as Completed Line
- Access or Improved Road
- Proposed Dozer Line
- Planned Fire Line

