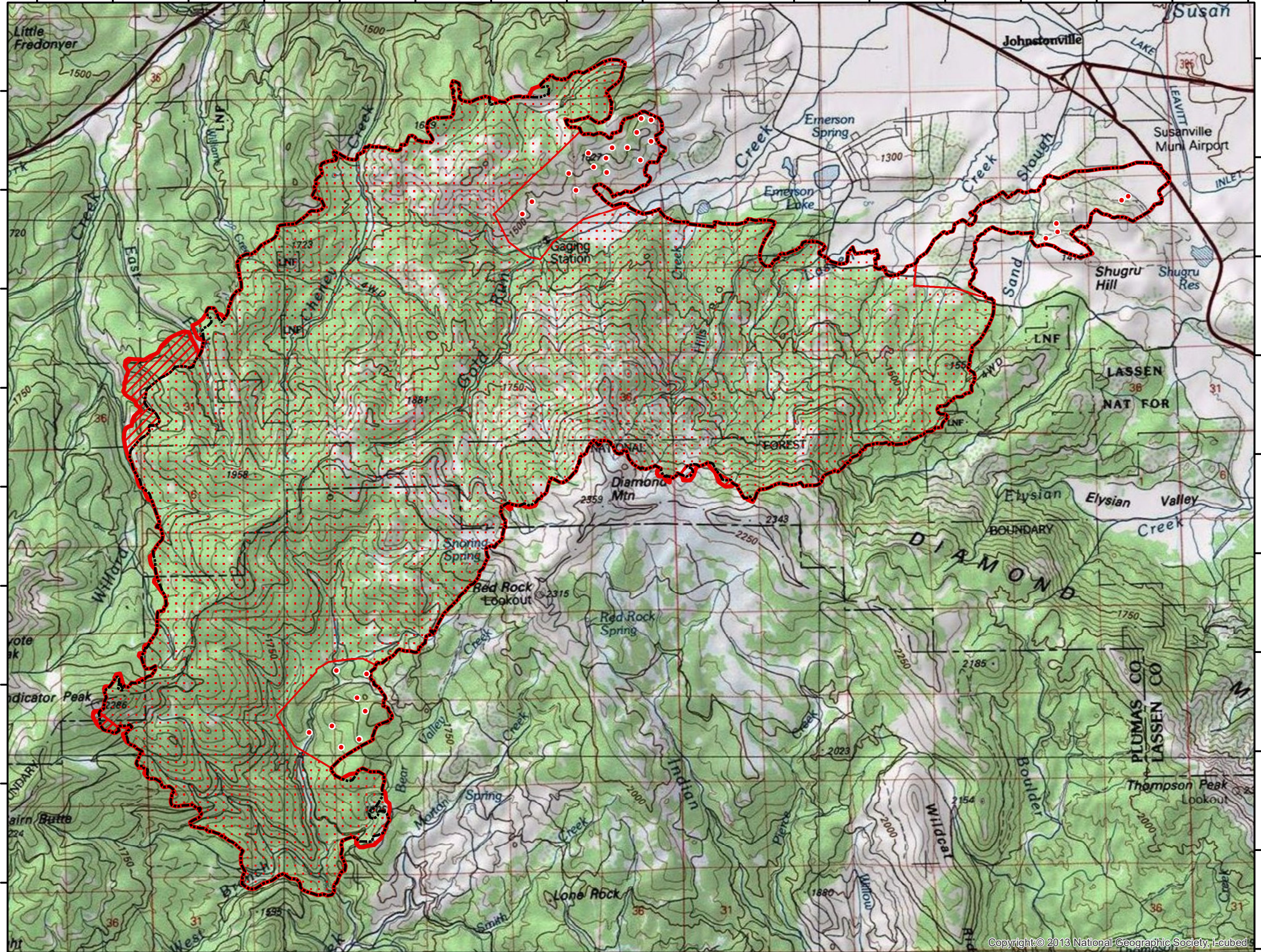


120°49'0"W 120°48'0"W 120°47'0"W 120°46'0"W 120°45'0"W 120°44'0"W 120°43'0"W 120°42'0"W 120°41'0"W 120°40'0"W 120°39'0"W 120°38'0"W 120°37'0"W 120°36'0"W 120°35'0"W 120°34'0"W 120°33'0"W






INFRARED MAP
NORTH COMPLEX-SHEEP
CA-PNF-001308
Interpreted (IR) Acres 29,410
August 27, 2020 @ 1940 PDT

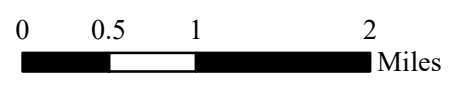


40°23'0"N
40°22'0"N
40°21'0"N
40°20'0"N
40°19'0"N
40°18'0"N
40°17'0"N
40°16'0"N
40°15'0"N
40°14'0"N

120°49'0"W 120°48'0"W 120°47'0"W 120°46'0"W 120°45'0"W 120°44'0"W 120°43'0"W 120°42'0"W 120°41'0"W 120°40'0"W 120°39'0"W 120°38'0"W 120°37'0"W 120°36'0"W 120°35'0"W 120°34'0"W



-  Isolated Heat
-  GIS Perimeter
-  Heat Perimeter
-  Intense Heat
-  Scattered Heat



IRIN: Cheron Ferland
Taos, NM
Nad 83 UTM Zone 10