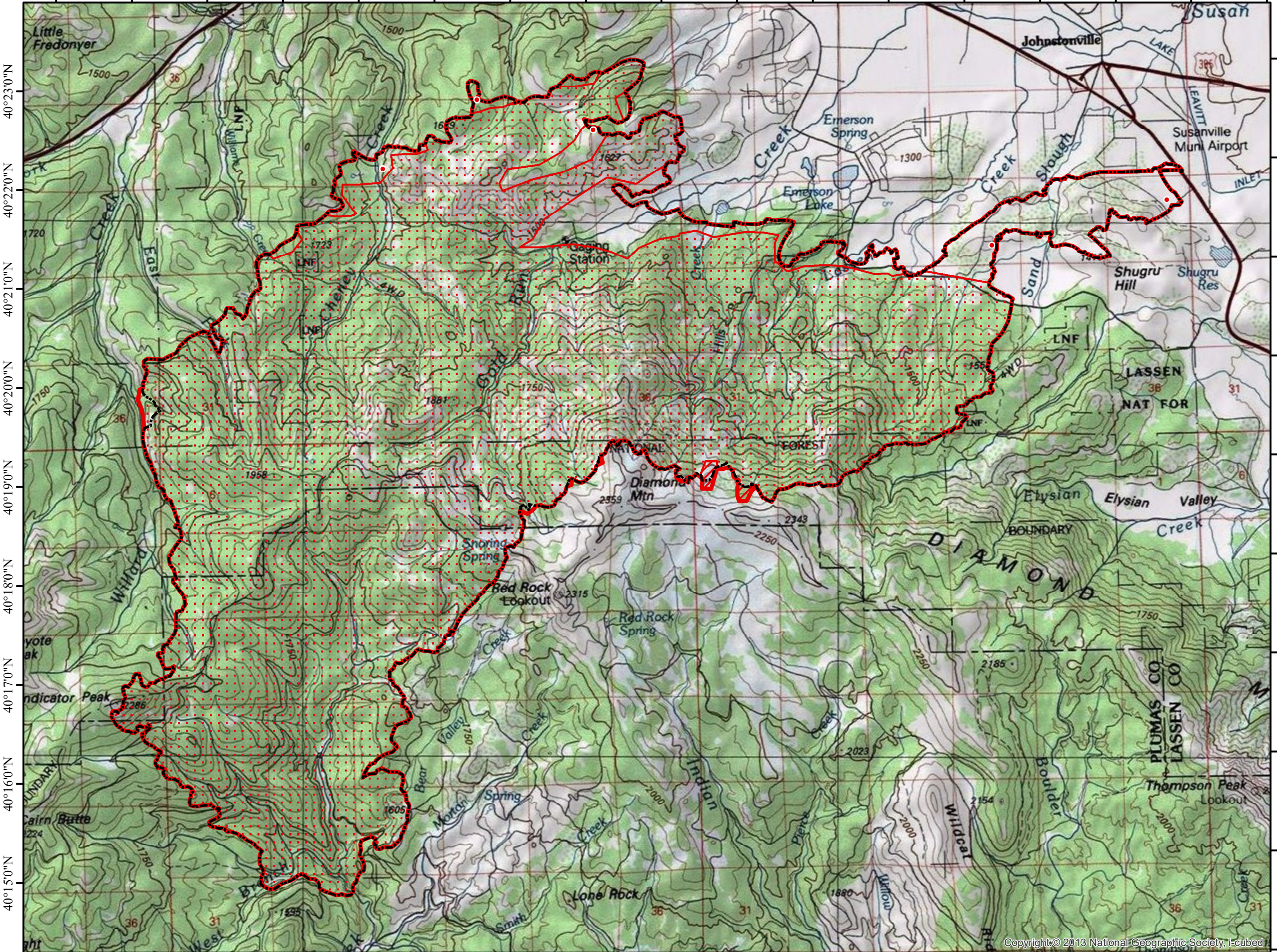


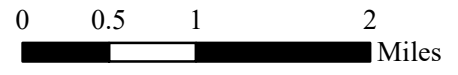
120°49'0"W 120°48'0"W 120°47'0"W 120°46'0"W 120°45'0"W 120°44'0"W 120°43'0"W 120°42'0"W 120°41'0"W 120°40'0"W 120°39'0"W 120°38'0"W 120°37'0"W 120°36'0"W 120°35'0"W 120°34'0"W 120°33'0"W



INFRARED MAP
NORTH COMPLEX-SHEEP
CA-PNF-001308
Interpreted (IR) Acres 29,527
August 30, 2020 @ 2123 PDT



	Isolated Heat
	GIS Perimeter
	Heat Perimeter
	Intense Heat
	Scattered Heat



IRIN: Cheron Ferland
Taos, NM
Nad 83 UTM Zone 10

120°49'0"W 120°48'0"W 120°47'0"W 120°46'0"W 120°45'0"W 120°44'0"W 120°43'0"W 120°42'0"W 120°41'0"W 120°40'0"W 120°39'0"W 120°38'0"W 120°37'0"W 120°36'0"W 120°35'0"W 120°34'0"W

40°23'0"N
40°22'0"N
40°21'0"N
40°20'0"N
40°19'0"N
40°18'0"N
40°17'0"N
40°16'0"N
40°15'0"N

40°23'0"N
40°22'0"N
40°21'0"N
40°20'0"N
40°19'0"N
40°18'0"N
40°17'0"N
40°16'0"N
40°15'0"N

Copyright © 2013 National Geographic Society, i-cubed