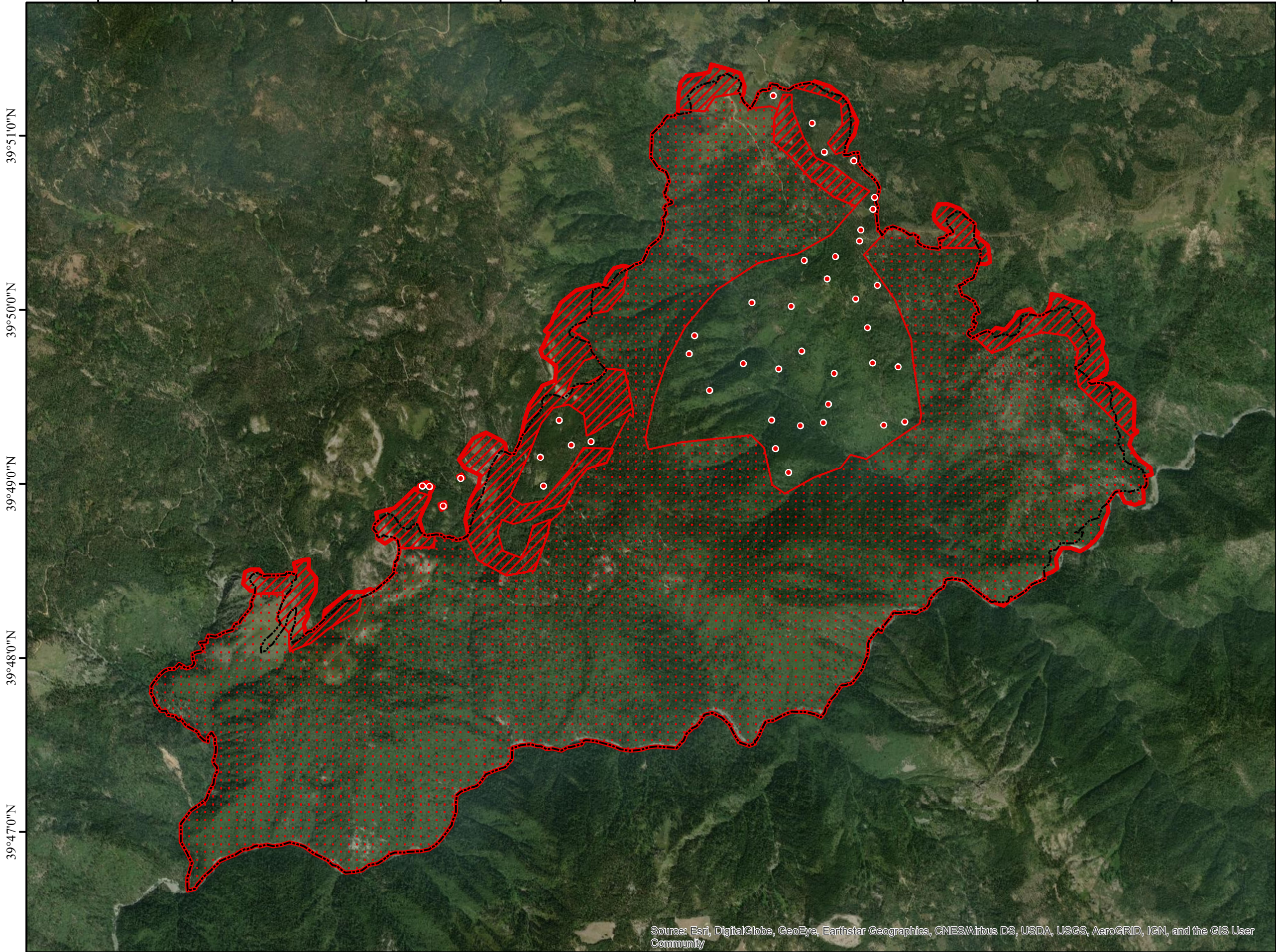


121°10'0"W 121°9'0"W 121°8'0"W 121°7'0"W 121°6'0"W 121°5'0"W 121°4'0"W 121°3'0"W 121°2'0"W






INFRARED MAP
BEAR
CA-PNF-001308
Interpreted (IR) Acres: 10.170
September 1, 2020 @ 0303 PDT



39°51'0"N
39°50'0"N
39°49'0"N
39°48'0"N
39°47'0"N

39°51'0"N
39°50'0"N
39°49'0"N
39°48'0"N
39°47'0"N



-  Isolated Heat
-  GIS Perimeter
-  Heat Perimeter
-  Intense Heat
-  Scattered Heat

0 0.25 0.5 1 Miles

Source: Esri, DigitalGlobe, GeoEye, Earthstar Geographics, CNES/Airbus DS, USDA, USGS, AeroGRID, IGN, and the GIS User Community

121°10'0"W 121°9'0"W 121°8'0"W 121°7'0"W 121°6'0"W 121°5'0"W 121°4'0"W 121°3'0"W 121°2'0"W

IRIN: Cheron Ferland
Taos, NM
Nad 83 UTM Zone 10