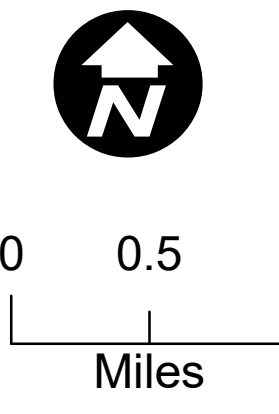
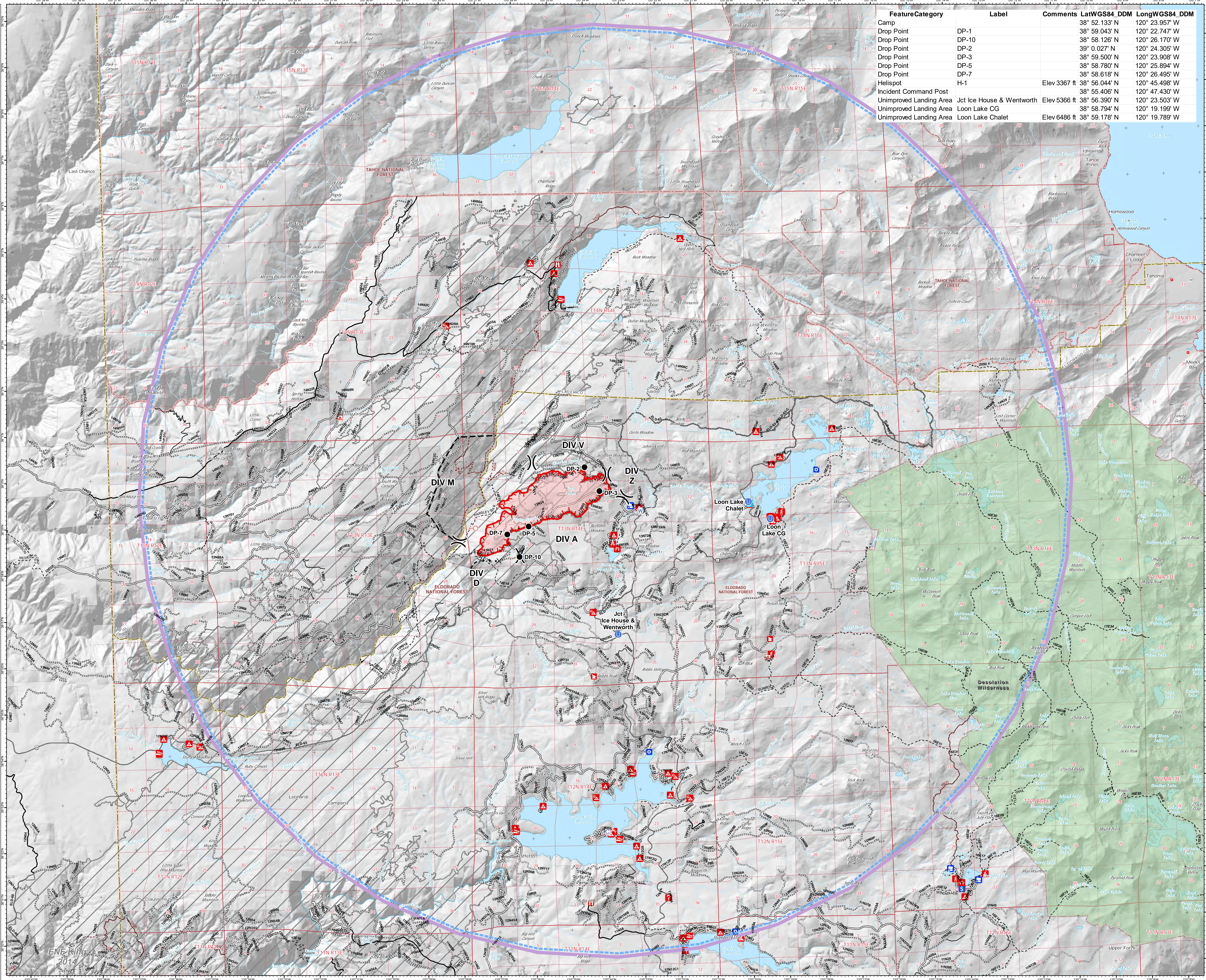


Air Ops
Fork Fire
CA-ENF-027219
 09/12/2020 Day
 1,736 acres
 at 09/11/2020
 20:40 Hrs



- Legend**
- Camp
 - Drop Point
 - Gate
 - Unimproved Landing
 - Spot Fire
 - Water Source
 - Division Break
 - Uncontrolled Fire Edge
 - Completed Dozer Line
 - Completed Hand Line
 - Road as Completed Line
 - Proposed Dozer Line
 - Planned Fire Line
 - Wildfire Daily Fire Perimeter
 - State or US Highway
 - Other Public Roads
 - Other Road
 - 1 - BASIC CUSTODIAL CARE (CLOSED)
 - 2 - HIGH CLEARANCE VEHICLES
 - 3 - SUITABLE FOR PASSENGER CARS
 - 4 - MODERATE DEGREE OF USER COMFORT
 - Non-Motorized Trail
 - Motorized Trail
 - S_ROS_ENF_TravelRoute_In
 - S_ROS_ENF_Road Private
 - Firehistory
 - Wilderness
 - USDA FOREST SERVICE
 - NON-FS
 - TFR 0_7697
 - School
 - Fire Station
 - State or Territory
 - County or Equivalent
 - Forest Service
 - Boating Site
 - Campground
 - Camping Area
 - Group Campground
 - Info Site/Fee Station
 - Interpretive Site (Admin)
 - Interpretive Site (Major)
 - Interpretive Site (Minor)
 - Lookout/Cabin
 - Observation Site
 - Organization Site
 - Picnic Site
 - Recreation Residence
 - Ski Area Nordic
 - Trailhead

FeatureCategory	Label	Comments	LatWGS84_DDM	LongWGS84_DDM
Camp			38° 52.133' N	120° 23.957' W
Drop Point	DP-1		38° 59.043' N	120° 22.747' W
Drop Point	DP-10		38° 58.126' N	120° 26.170' W
Drop Point	DP-2		39° 0.027' N	120° 24.305' W
Drop Point	DP-3		38° 59.500' N	120° 23.908' W
Drop Point	DP-5		38° 58.780' N	120° 25.894' W
Drop Point	DP-7		38° 58.618' N	120° 26.495' W
Helispot	H-1	Elev 3367 ft	38° 56.044' N	120° 45.498' W
Incident Command Post			38° 55.406' N	120° 47.430' W
Unimproved Landing Area	Jct Ice House & Wentworth	Elev 5366 ft	38° 56.390' N	120° 23.503' W
Unimproved Landing Area	Loon Lake CG		38° 58.794' N	120° 19.199' W
Unimproved Landing Area	Loon Lake Chalet	Elev 6486 ft	38° 59.178' N	120° 19.789' W



ENE King
 2014
 09-12-2020 0649 hrs
 Acres from IR and field reports
 WGS84 Lat/Long grid