

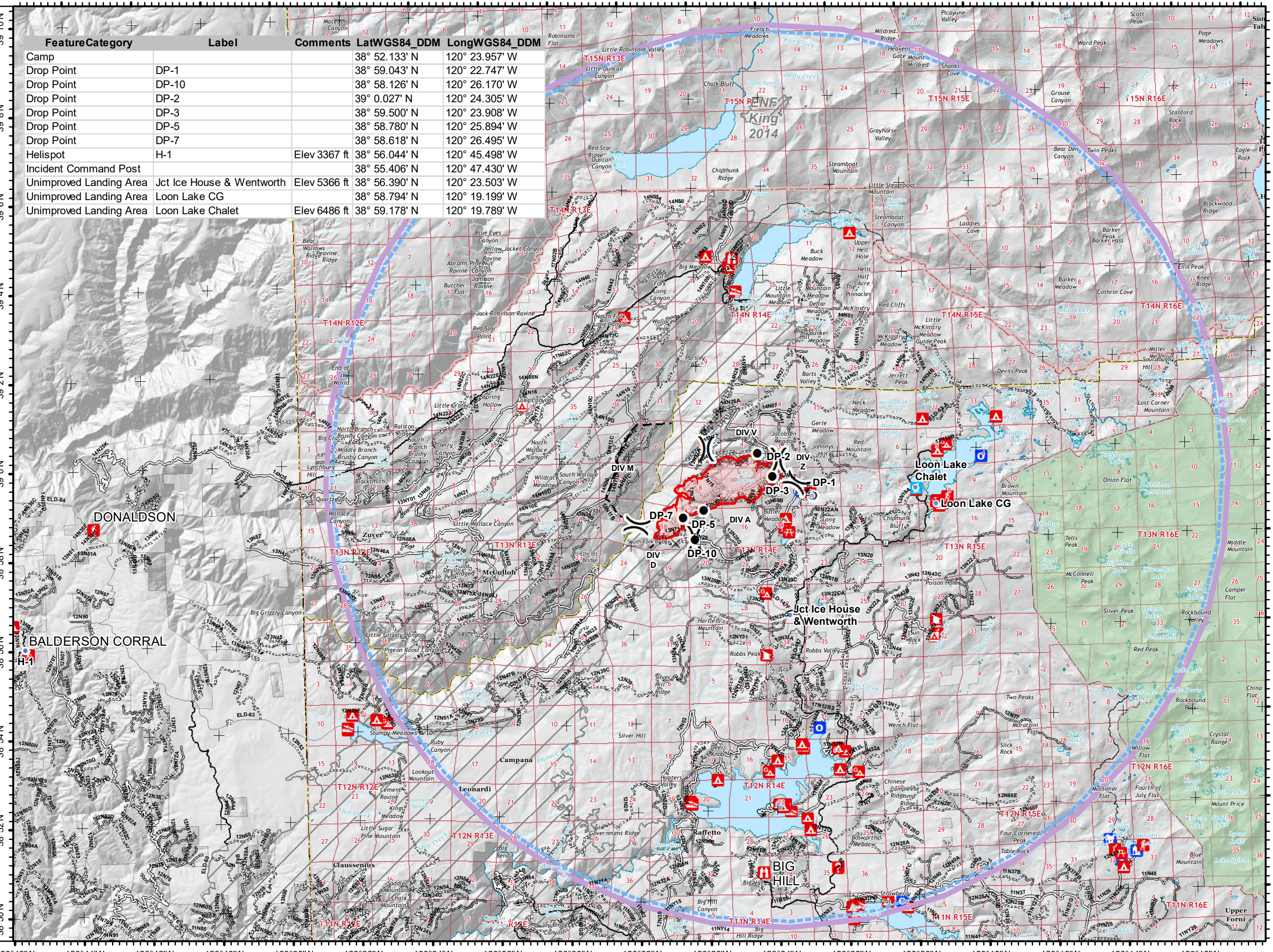
**Pilot Fork Fire**  
CA-ENF-027219  
09/12/2020 Day

1,736 acres  
at 09/11/2020  
20:40 Hrs



FeatureCategory	Label	Comments	LatWGS84_DDM	LongWGS84_DDM
Camp			38° 52.133' N	120° 23.957' W
Drop Point	DP-1		38° 59.043' N	120° 22.747' W
Drop Point	DP-10		38° 58.126' N	120° 26.170' W
Drop Point	DP-2		39° 0.027' N	120° 24.305' W
Drop Point	DP-3		38° 59.500' N	120° 23.908' W
Drop Point	DP-5		38° 58.780' N	120° 25.894' W
Drop Point	DP-7		38° 58.618' N	120° 26.495' W
Helispot	H-1	Elev 3367 ft	38° 56.044' N	120° 45.498' W
Incident Command Post			38° 55.406' N	120° 47.430' W
Unimproved Landing Area	Jct Ice House & Wentworth	Elev 5366 ft	38° 56.390' N	120° 23.503' W
Unimproved Landing Area	Loon Lake CG		38° 58.794' N	120° 19.199' W
Unimproved Landing Area	Loon Lake Chalet	Elev 6486 ft	38° 59.178' N	120° 19.789' W

- TFR 0\_7697
- Camp
- Drop Point
- Gate
- Unimproved Landing Area
- Helispot
- Spot Fire
- Water Source
- Division Break
- Uncontrolled Fire Edge
- Completed Dozer Line
- Completed Hand Line
- Road as Completed Line
- Proposed Dozer Line
- Planned Fire Line
- Wildfire Daily Fire Perimeter
- Fire History
- Wilderness
- Forest Service
- USDA FOREST SERVICE
- NON-FS
- Boating Site
- Campground
- Camping Area
- Group Campground
- Info Site/Fee Station
- Interpretive Site (Admin);
- Interpretive Site (Major);
- Interpretive Site (Minor)
- Lookout/Cabin
- Observation Site
- Organization Site
- Picnic Site
- Recreation Residence
- Ski Area Nordic
- Trailhead



bkirk  
09-12-2020 @ 0637 hrs  
Acres from IR and field reports  
WGS84 Lat/Long grid