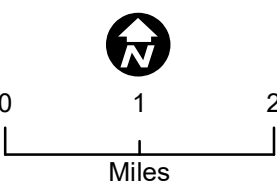
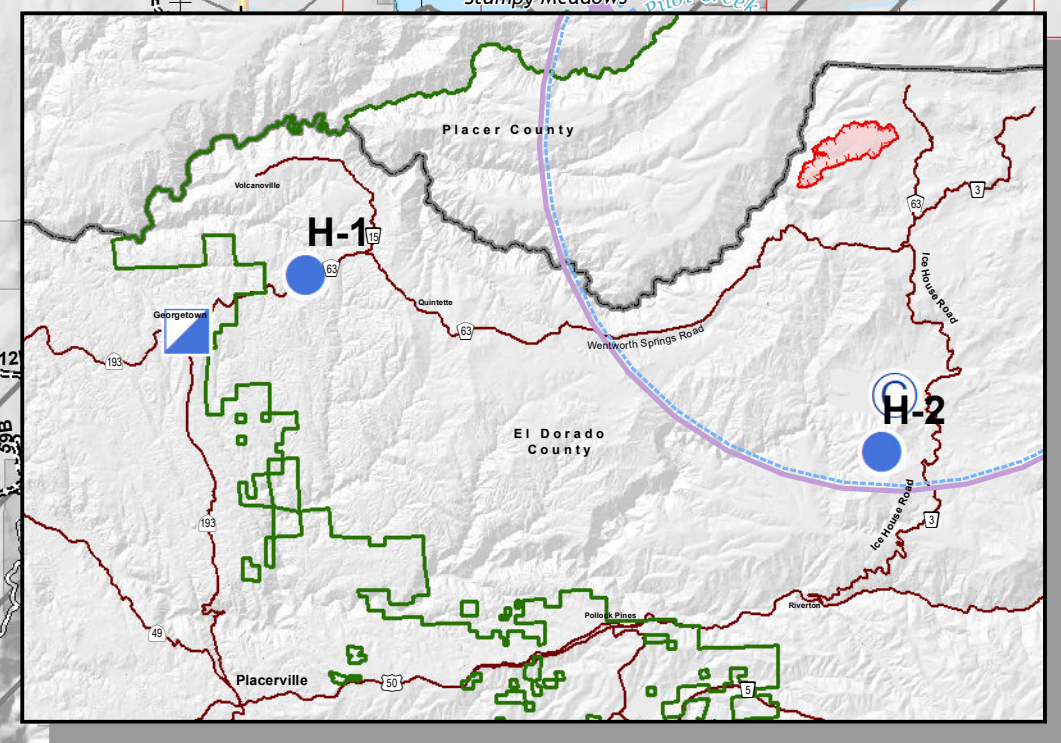
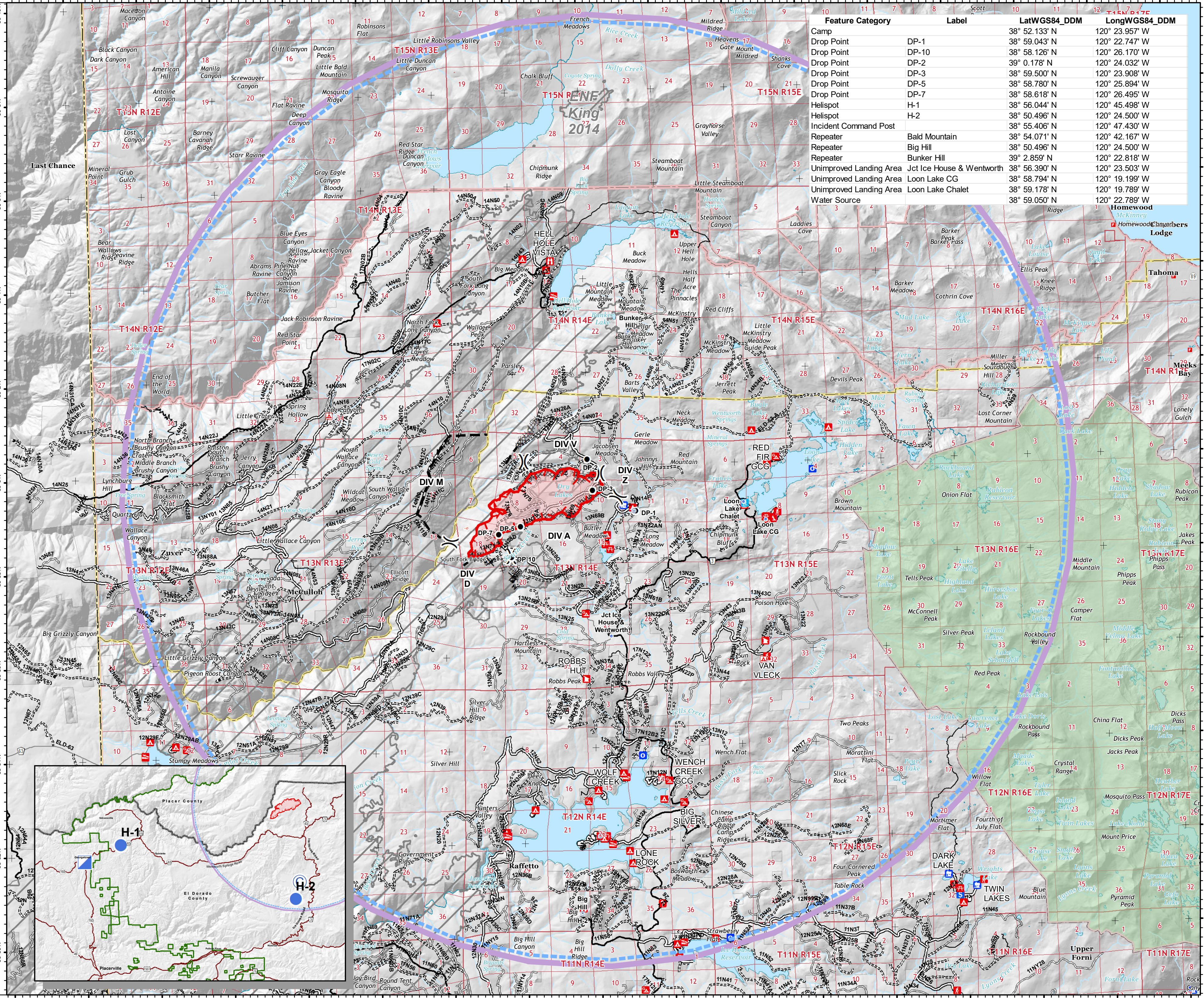


Pilot Fork Fire
 CA-ENF-027219
 09/13/2020 Day
 1,752 acres
 at 09/12/2020
 20:40 Hrs



- Camp
- Drop Point
- Gate
- Unimproved Landing Area
- Helispot
- Repeater
- Spot Fire
- Water Source
- Division Break
- Uncontrolled Fire Edge
- Completed Dozer Line
- Completed Hand Line
- Road as Completed Line
- Proposed Dozer Line
- Planned Fire Line
- Wildfire Daily Fire Perimeter
- Fire History
- Wilderness
- Forest Service
- USDA FOREST SERVICE
- NON-FS
- Boating Site
- Campground
- Camping Area
- Group Campground
- Info Site/Fee Station
- Interpretive Site (Admin)
- Interpretive Site (Major)
- Interpretive Site (Minor)
- Lookout/Cabin
- Observation Site
- Organization Site
- Picnic Site
- Recreation Residence
- Ski Area Nordic
- Trailhead

Feature Category	Label	LatWGS84_DDM	LongWGS84_DDM
Camp		38° 52.133' N	120° 23.957' W
Drop Point	DP-1	38° 59.043' N	120° 22.747' W
Drop Point	DP-10	38° 58.126' N	120° 26.170' W
Drop Point	DP-2	39° 0.178' N	120° 24.032' W
Drop Point	DP-3	38° 59.500' N	120° 23.908' W
Drop Point	DP-5	38° 58.780' N	120° 25.894' W
Drop Point	DP-7	38° 58.618' N	120° 26.495' W
Helispot	H-1	38° 56.044' N	120° 45.498' W
Helispot	H-2	38° 50.496' N	120° 24.500' W
Incident Command Post		38° 55.406' N	120° 47.430' W
Repeater	Bald Mountain	38° 54.071' N	120° 42.167' W
Repeater	Big Hill	38° 50.496' N	120° 24.500' W
Repeater	Bunker Hill	39° 2.859' N	120° 22.818' W
Unimproved Landing Area	Jct Ice House & Wentworth	38° 56.390' N	120° 23.503' W
Unimproved Landing Area	Loon Lake CG	38° 58.794' N	120° 19.199' W
Unimproved Landing Area	Loon Lake Chalet	38° 59.178' N	120° 19.789' W
Water Source		38° 59.050' N	120° 22.789' W



Southwest Area
 Incident Management Team 4

bkirk
 09-13-2020 @ 0602 hrs
 Acres from IR and field reports
 WGS84 Lat/Long grid