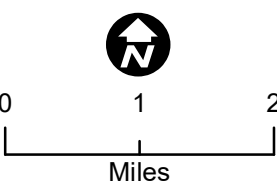


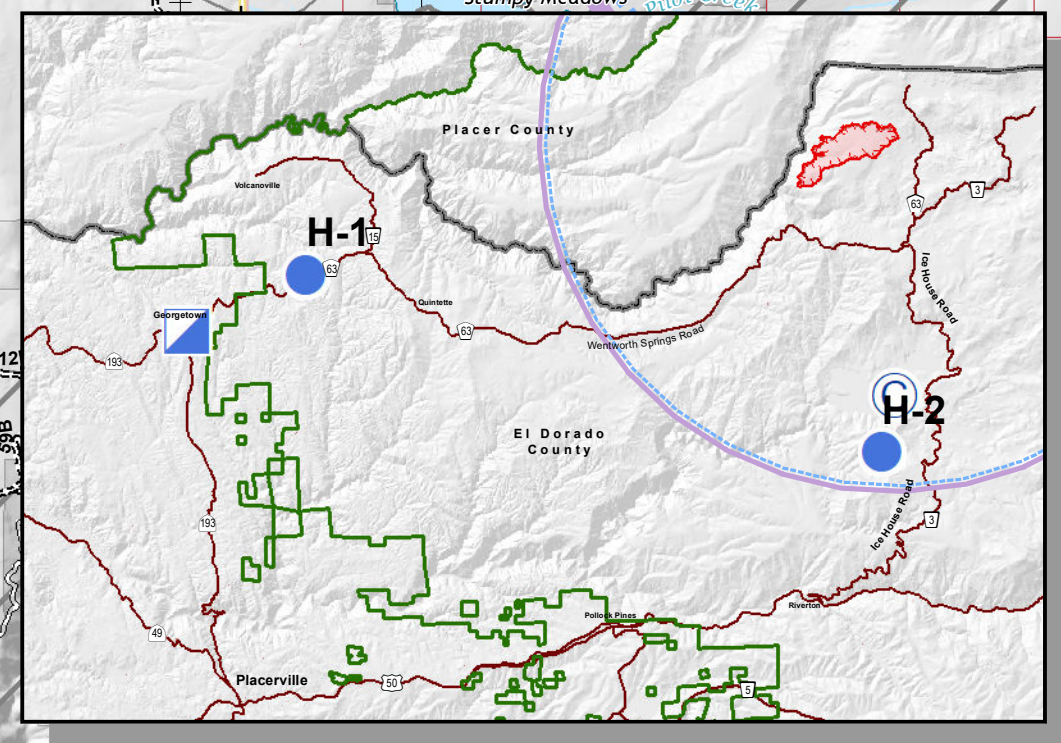
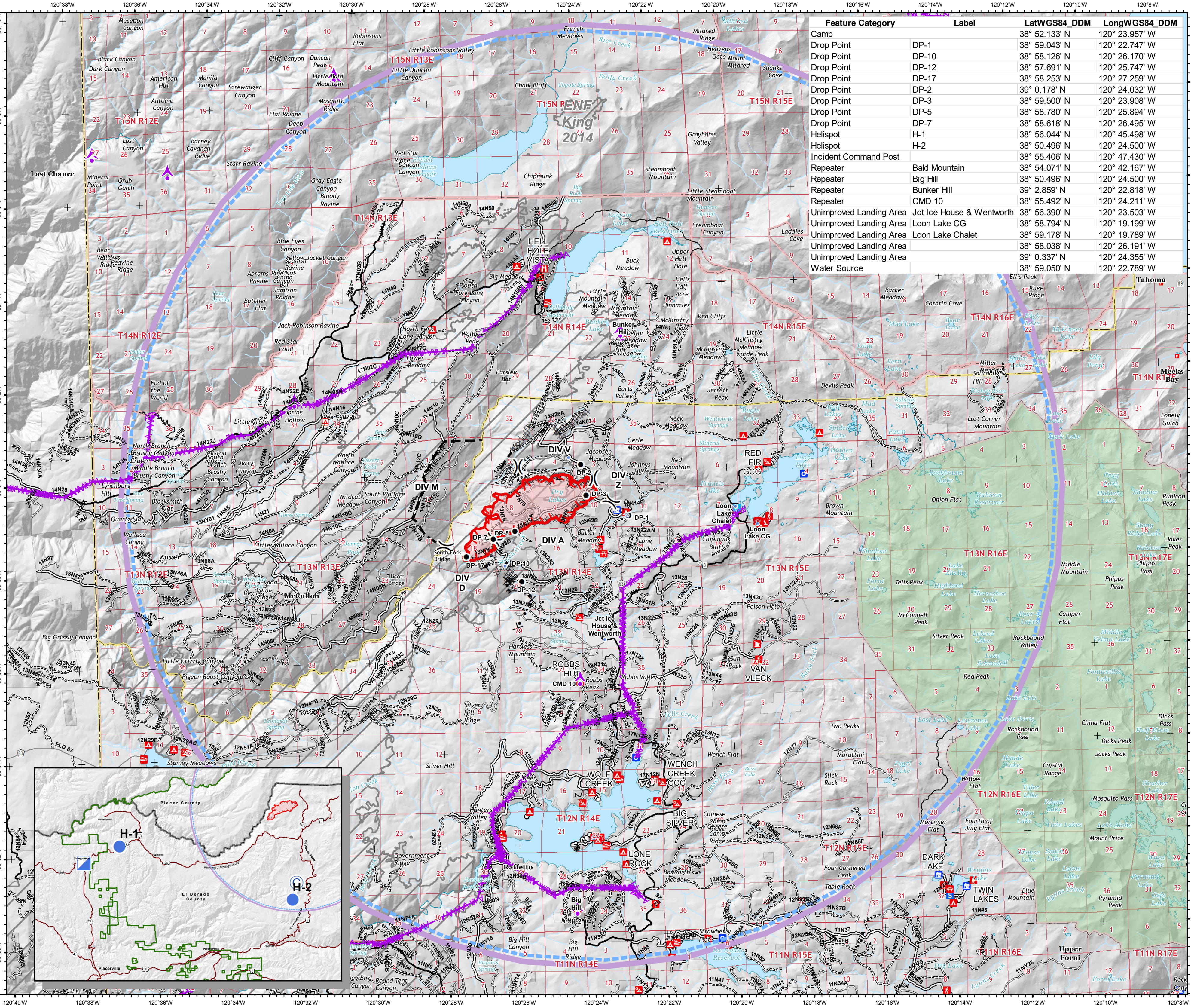
Pilot Fork Fire
CA-ENF-027219
09/14/2020 Day

1,752 acres
at 09/13/2020
20:40 Hrs



- Legend**
- Aerial Hazard
 - Aerial Hazard
 - Camp
 - Drop Point
 - Gate
 - Unimproved Landing Area
 - Helispot
 - Internet Access
 - Repeater
 - Water Source
 - Division Break
 - Uncontrolled Fire Edge
 - Completed Dozer Line
 - Completed Hand Line
 - Road as Completed Line
 - Proposed Dozer Line
 - Planned Fire Line
 - Wildfire Daily Fire Penimeter
 - FireHistory
 - Wilderness
 - Forest Service
 - USDA FOREST SERVICE
 - NON-FS
 - Boating Site
 - Campground
 - Camping Area
 - Group Campground
 - Info Site/Fee Station
 - Interpretive Site (Admin)
 - Interpretive Site (Major)
 - Interpretive Site (Minor)
 - Lookout/Cabin
 - Observation Site
 - Organization Site
 - Picnic Site
 - Recreation Residence
 - Ski Area Nordic
 - Trailhead

Feature Category		Label	LatWGS84_DDM	LongWGS84_DDM
Camp			38° 52.133' N	120° 23.957' W
Drop Point			38° 59.043' N	120° 22.747' W
Drop Point		DP-1	38° 58.126' N	120° 26.170' W
Drop Point		DP-10	38° 57.691' N	120° 25.747' W
Drop Point		DP-12	38° 58.253' N	120° 27.259' W
Drop Point		DP-2	39° 0.178' N	120° 24.032' W
Drop Point		DP-3	38° 59.500' N	120° 23.908' W
Drop Point		DP-5	38° 58.780' N	120° 25.894' W
Drop Point		DP-7	38° 58.618' N	120° 26.495' W
Helispot		H-1	38° 56.044' N	120° 45.498' W
Helispot		H-2	38° 50.496' N	120° 24.500' W
Incident Command Post			38° 55.406' N	120° 47.430' W
Repeater		Bald Mountain	38° 54.071' N	120° 42.167' W
Repeater		Big Hill	38° 50.496' N	120° 24.500' W
Repeater		Bunker Hill	39° 2.859' N	120° 22.818' W
Repeater		CMD 10	38° 55.492' N	120° 24.211' W
Unimproved Landing Area		Jct Ice House & Wentworth	38° 56.390' N	120° 23.503' W
Unimproved Landing Area		Loon Lake CG	38° 58.794' N	120° 19.199' W
Unimproved Landing Area		Loon Lake Chalet	38° 59.178' N	120° 19.789' W
Unimproved Landing Area			38° 58.038' N	120° 26.191' W
Unimproved Landing Area			39° 0.337' N	120° 24.355' W
Water Source			38° 59.050' N	120° 22.789' W



bkirk
09-14-2020 @ 0623 hrs
Acres from IR and field reports
WGS84 Lat/Long grid