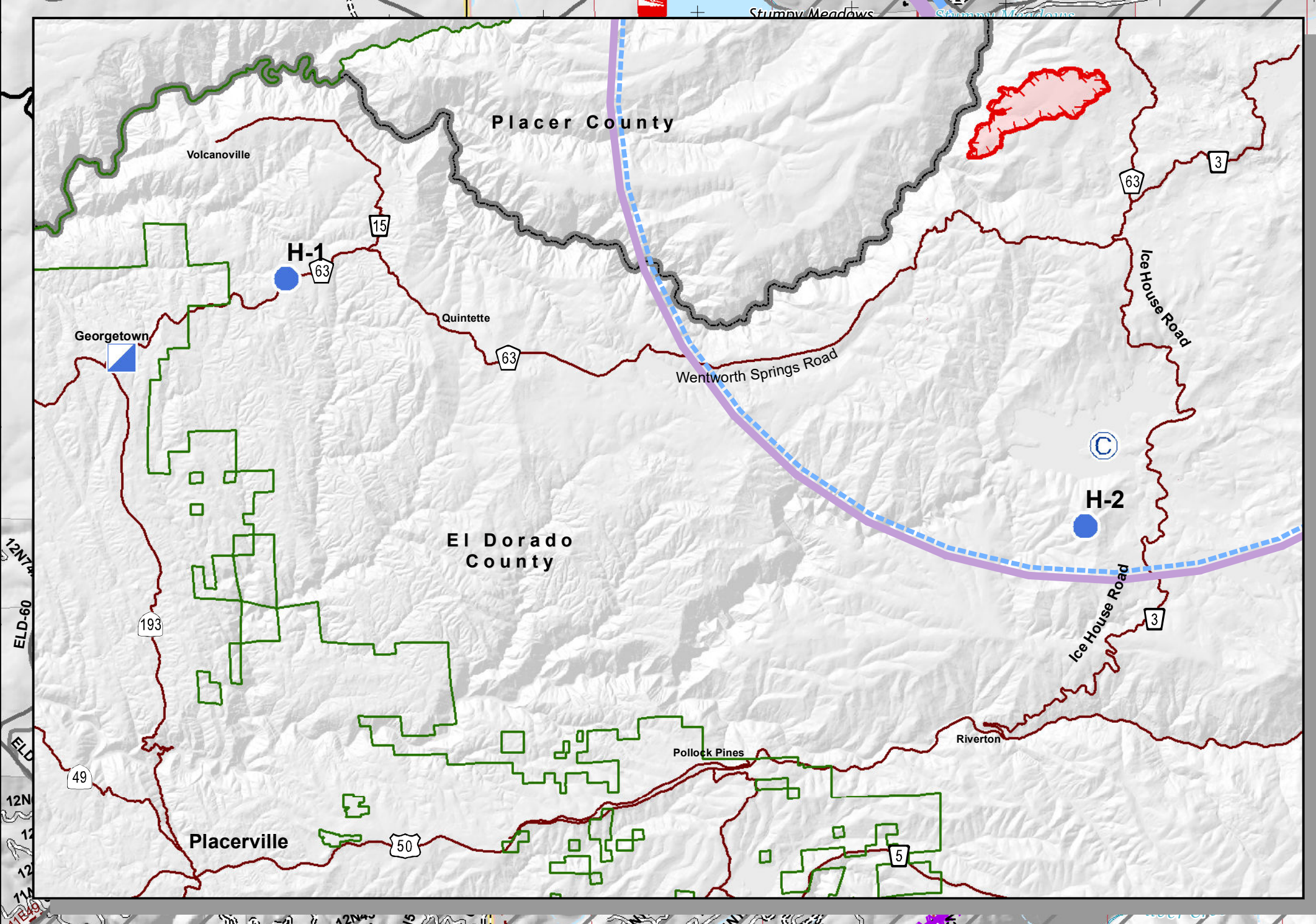
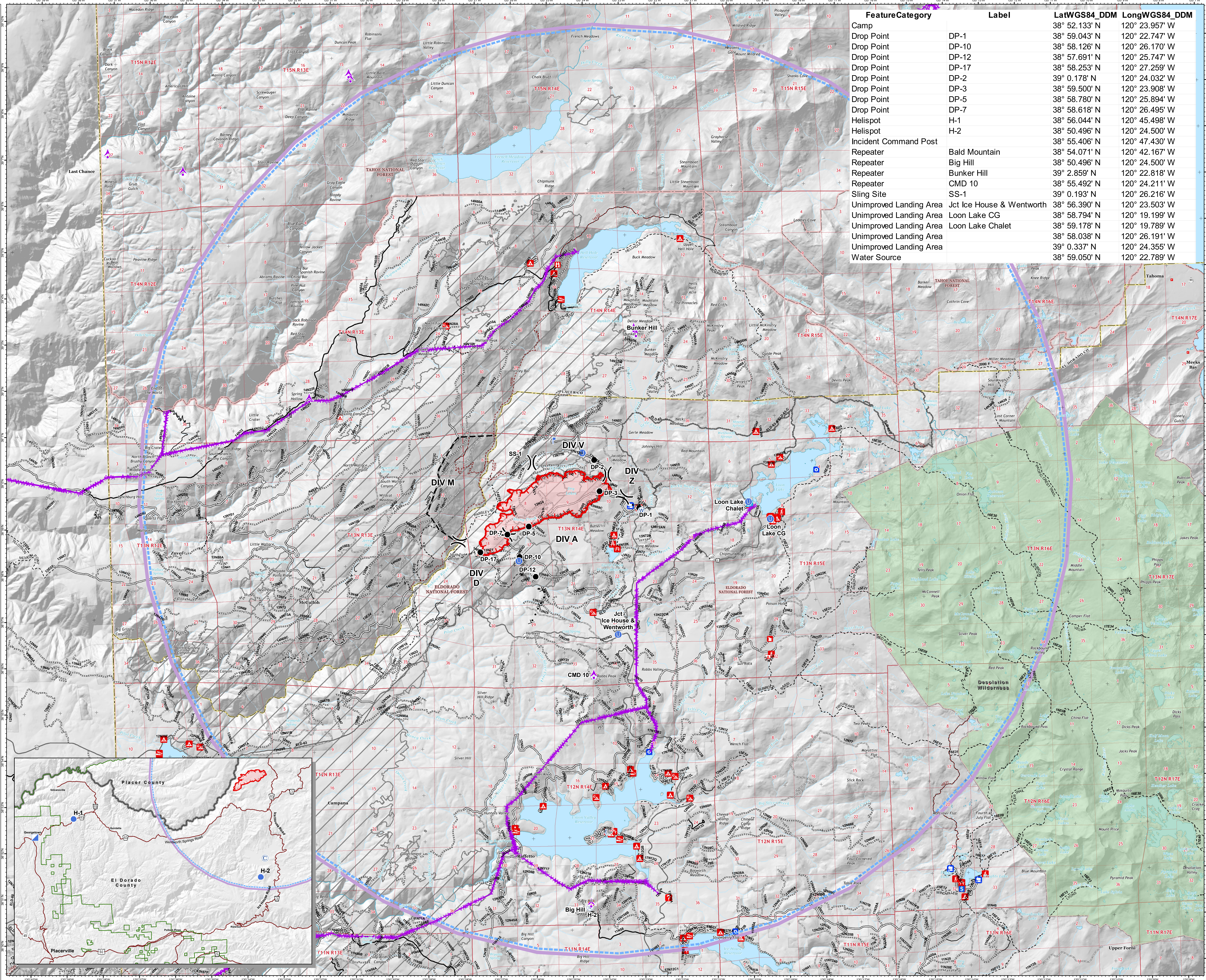


**Air Ops**  
**Fork Fire**  
**CA-ENF-027219**  
 09/15/2020 Day  
 1,752 acres  
 at 09/13/2020  
 20:40 Hrs

- Legend**
- Aerial Hazard
  - Camp
  - Drop Point
  - Gate
  - Unimproved Landing Area
  - Helispot
  - Internet Access
  - Lookout
  - Repeater
  - Sling Site
  - Water Source
  - Other
  - Division Break
  - Uncontrolled Fire Edge
  - Completed Dozer Line
  - Completed Hand Line
  - Road as Completed Line
  - Access or Improved Road
  - Proposed Dozer Line
  - Planned Fire Line
  - Wildfire Daily Fire Perimeter
  - State or US Highway
  - Other Public Roads
  - Other Road
  - 1 - BASIC CUSTODIAL CARE (CLOSED)
  - 2 - HIGH CLEARANCE VEHICLES
  - 3 - SUITABLE FOR PASSENGER CARS
  - 4 - MODERATE DEGREE OF USER COMFORT
  - Non-Motorized Trail
  - Motorized Trail
  - S\_R05\_ENF\_TravelRoute\_In
  - S\_R05\_ENF\_Road Private
  - Firehistory
  - Wilderness
  - USDA FOREST SERVICE NON-FS
  - WFR 0\_7607
  - School
  - Fire Station
  - State or Territory
  - County or Equivalent
  - Forest Service
  - Boating Site
  - Campground
  - Camping Area
  - Group Campground
  - Info Site/Fee Station
  - Interpretive Site (Admin)
  - Interpretive Site (Major)
  - Interpretive Site (Minor)
  - Lookout/Cabin
  - Observation Site
  - Organization Site
  - Picnic Site
  - Recreation Residence
  - Ski Area Nordic
  - Trailhead

FeatureCategory	Label	LatWGS84_DDM	LongWGS84_DDM
Camp		38° 52.133' N	120° 23.957' W
Drop Point	DP-1	38° 59.043' N	120° 22.747' W
Drop Point	DP-10	38° 58.126' N	120° 26.170' W
Drop Point	DP-12	38° 57.691' N	120° 25.747' W
Drop Point	DP-17	38° 58.253' N	120° 27.259' W
Drop Point	DP-2	39° 0.178' N	120° 24.032' W
Drop Point	DP-3	38° 59.500' N	120° 23.908' W
Drop Point	DP-5	38° 58.780' N	120° 25.894' W
Drop Point	DP-7	38° 58.618' N	120° 26.495' W
Helispot	H-1	38° 56.044' N	120° 45.498' W
Helispot	H-2	38° 50.496' N	120° 24.500' W
Incident Command Post		38° 55.406' N	120° 47.430' W
Repeater	Bald Mountain	38° 54.071' N	120° 42.167' W
Repeater	Big Hill	38° 50.496' N	120° 24.500' W
Repeater	Bunker Hill	39° 2.859' N	120° 22.818' W
Repeater	CMD 10	38° 55.492' N	120° 24.211' W
Sling Site	SS-1	39° 0.193' N	120° 26.216' W
Unimproved Landing Area	Jct Ice House & Wentworth	38° 56.390' N	120° 23.503' W
Unimproved Landing Area	Loon Lake CG	38° 58.794' N	120° 19.199' W
Unimproved Landing Area	Loon Lake Chalet	38° 59.178' N	120° 19.789' W
Unimproved Landing Area		38° 58.038' N	120° 26.191' W
Unimproved Landing Area		39° 0.337' N	120° 24.355' W
Water Source		38° 59.050' N	120° 22.789' W



**SOUTHWEST AREA**  
**INCIDENT MANAGEMENT TEAM 4**  
 09-14-2020 2:09 hrs  
 Acres from 18 and field reports  
 WGS84 Lat/Long grid