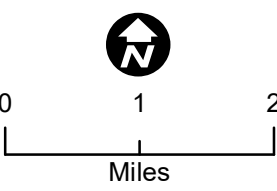
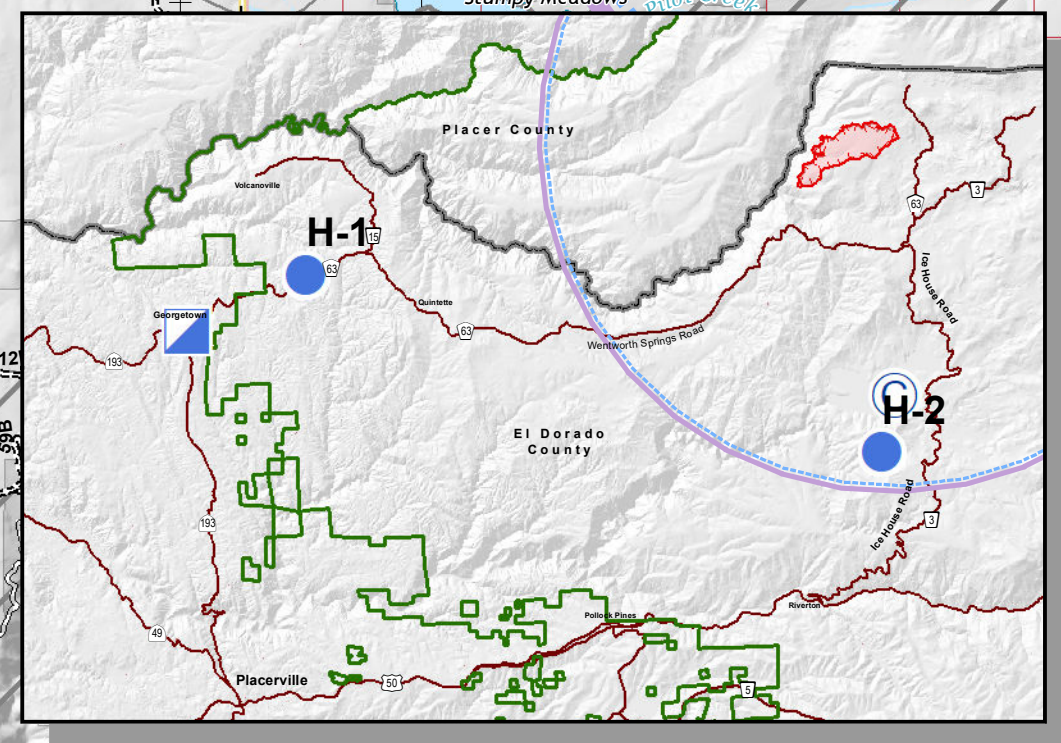
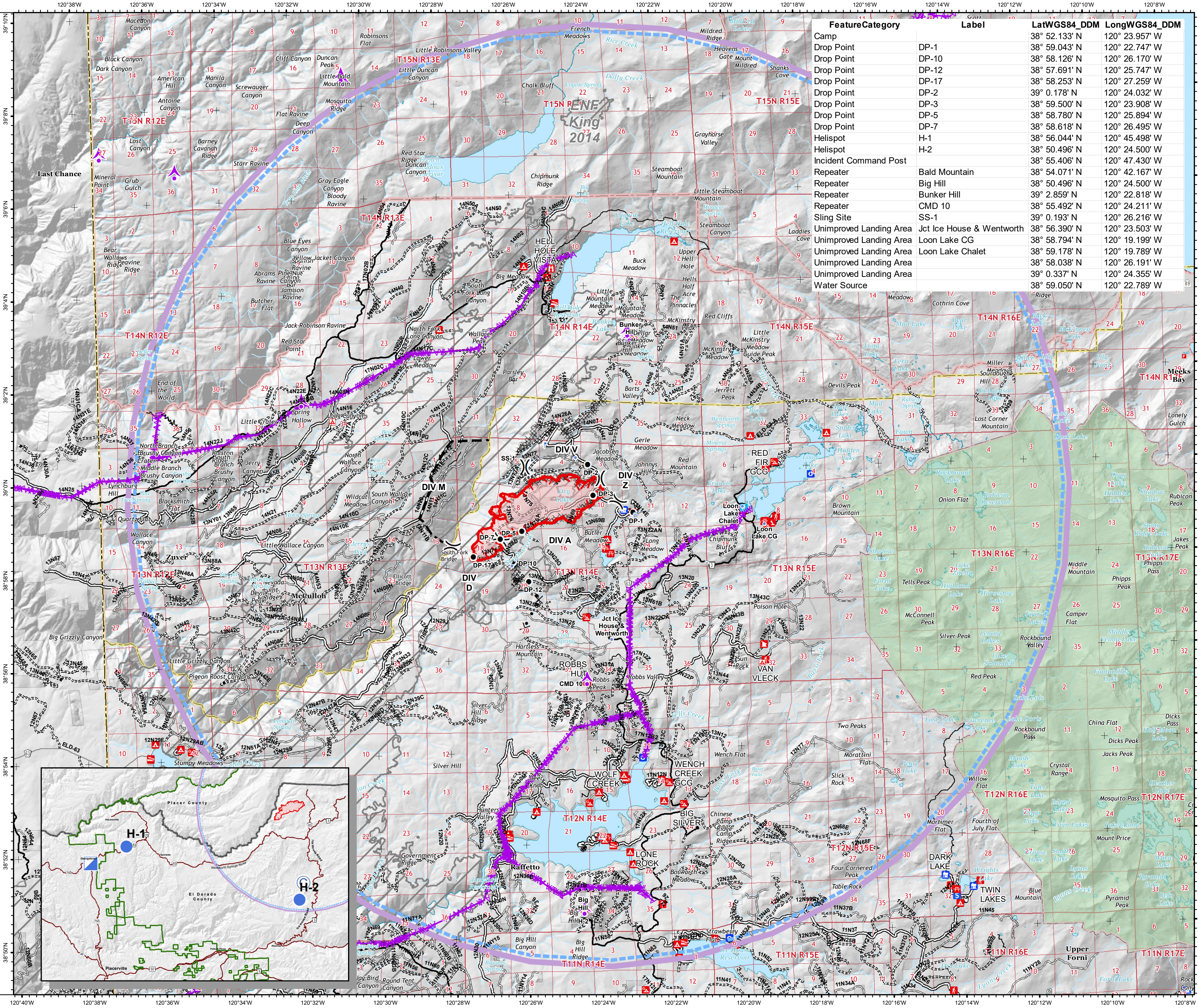


Pilot Fork Fire
 CA-ENF-027219
 09/15/2020 Day
 1,752 acres
 at 09/14/2020
 22:30 Hrs



- Legend**
- Aerial Hazard
 - Aerial Hazard
 - Camp
 - Drop Point
 - Gate
 - Unimproved Landing Area
 - Helispot
 - Internet Access
 - Lookout
 - Repeater
 - Sling Site
 - Water Source
 - Other
 - Division Break
 - Uncontrolled Fire Edge
 - Completed Dozer Line
 - Completed Hand Line
 - Road as Completed Line
 - Access or Improved Road
 - Proposed Dozer Line
 - Planned Fire Line
 - Wildfire Daily Fire Perimeter
 - Fire History
 - Wilderness
 - Forest Service
 - USDA FOREST SERVICE
 - NON-FS
 - Boating Site
 - Campground
 - Camping Area
 - Group Campground
 - Info Site/Fee Station
 - Interpretive Site (Admin)
 - Interpretive Site (Major)
 - Interpretive Site (Minor)
 - Lookout/Cabin
 - Observation Site
 - Organization Site
 - Picnic Site
 - Recreation Residence
 - Ski Area Nordic
 - Trailhead

Feature Category	Label	LatWGS84_DDM	LongWGS84_DDM
Camp		38° 52.133' N	120° 23.957' W
Drop Point	DP-1	38° 59.043' N	120° 22.747' W
Drop Point	DP-10	38° 58.126' N	120° 26.170' W
Drop Point	DP-12	38° 57.691' N	120° 25.747' W
Drop Point	DP-17	38° 58.253' N	120° 27.259' W
Drop Point	DP-2	39° 0.178' N	120° 24.032' W
Drop Point	DP-3	38° 59.500' N	120° 23.908' W
Drop Point	DP-5	38° 58.780' N	120° 25.894' W
Drop Point	DP-7	38° 58.618' N	120° 26.495' W
Helispot	H-1	38° 56.044' N	120° 45.498' W
Helispot	H-2	38° 50.496' N	120° 24.500' W
Incident Command Post		38° 55.406' N	120° 47.430' W
Repeater	Bald Mountain	38° 54.071' N	120° 42.167' W
Repeater	Big Hill	38° 50.496' N	120° 24.500' W
Repeater	Bunker Hill	39° 2.859' N	120° 22.818' W
Repeater	CMD 10	38° 55.492' N	120° 24.211' W
Sling Site	SS-1	39° 0.193' N	120° 26.216' W
Unimproved Landing Area	Jct Ice House & Wentworth	38° 56.390' N	120° 23.503' W
Unimproved Landing Area	Loon Lake CG	38° 58.794' N	120° 19.199' W
Unimproved Landing Area	Loon Lake Chalet	38° 59.178' N	120° 19.789' W
Unimproved Landing Area		38° 58.038' N	120° 26.191' W
Unimproved Landing Area		39° 0.337' N	120° 24.355' W
Water Source		38° 59.050' N	120° 22.789' W



bkirk
 09-15-2020 @ 0629 hrs
 Acres from IR and field reports
 WGS84 Lat/Long grid