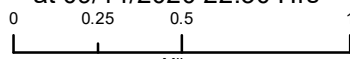


Incident Action Plan

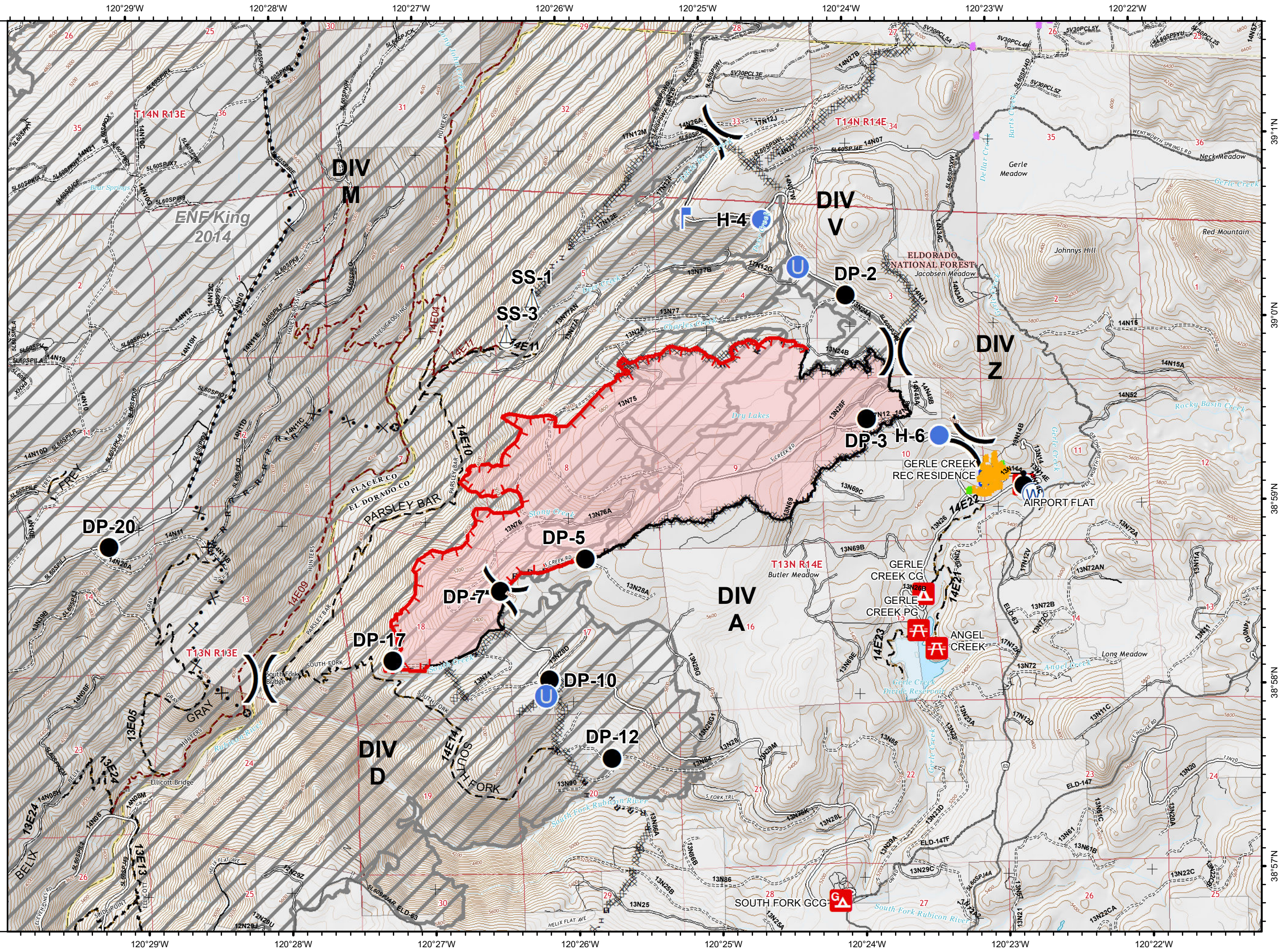
Fork Fire
CA-ENF-027219
09/17/2020 Day
Page 1 of 2
1,752 acres
at 09/14/2020 22:30 Hrs



- Campground
- Group Campground
- Picnic Site
- Recreation Residence
- Seasonal Roads
- SPI Complete
- Tree Removal Areas
- Defensible - Stand Alone
- Defensible - Prep and Hold
- Non-Defens... - Prep and Leave
- Drop Point
- Gate
- Unimproved Landing Area
- Helispot
- Lookout
- Sling Site
- Water Source
- Division Break
- Uncontrolled Fire Edge
- Contained Line
- Completed Dozer Line
- Completed Hand Line
- Road as Completed Line
- Access or Improved Road
- Proposed Dozer Line
- Planned Fire Line
- Planned Secondary Line
- Other
- Wildfire Daily Fire Perimeter
- Other Public Roads
- Other Road
- 1 - BASIC CUSTODIAL CARE (CLOSED)
- 2 - HIGH CLEARANCE VEHICLES
- 3 - SUITABLE FOR PASSENGER CARS
- 4 - MODERATE DEGREE OF USER COMFORT
- Non-Motorized Trail
- Motorized Trail
- S_R05_ENF.Tr... Private
- FireHistory
- USDA FOREST SERVICE
- NON-FS
- TNM Derived Names
- State or Territory
- County or Equivalent
- Forest Service
- Local Road



aseifert
09-16-2020 @ 2207 hrs
Acres from IR and field reports
WGS84 Lat/Long grid



Incident Action Plan

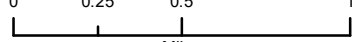
Fork Fire
CA-ENF-027219

09/17/2020 Day

Page 2 of 2

1,752 acres

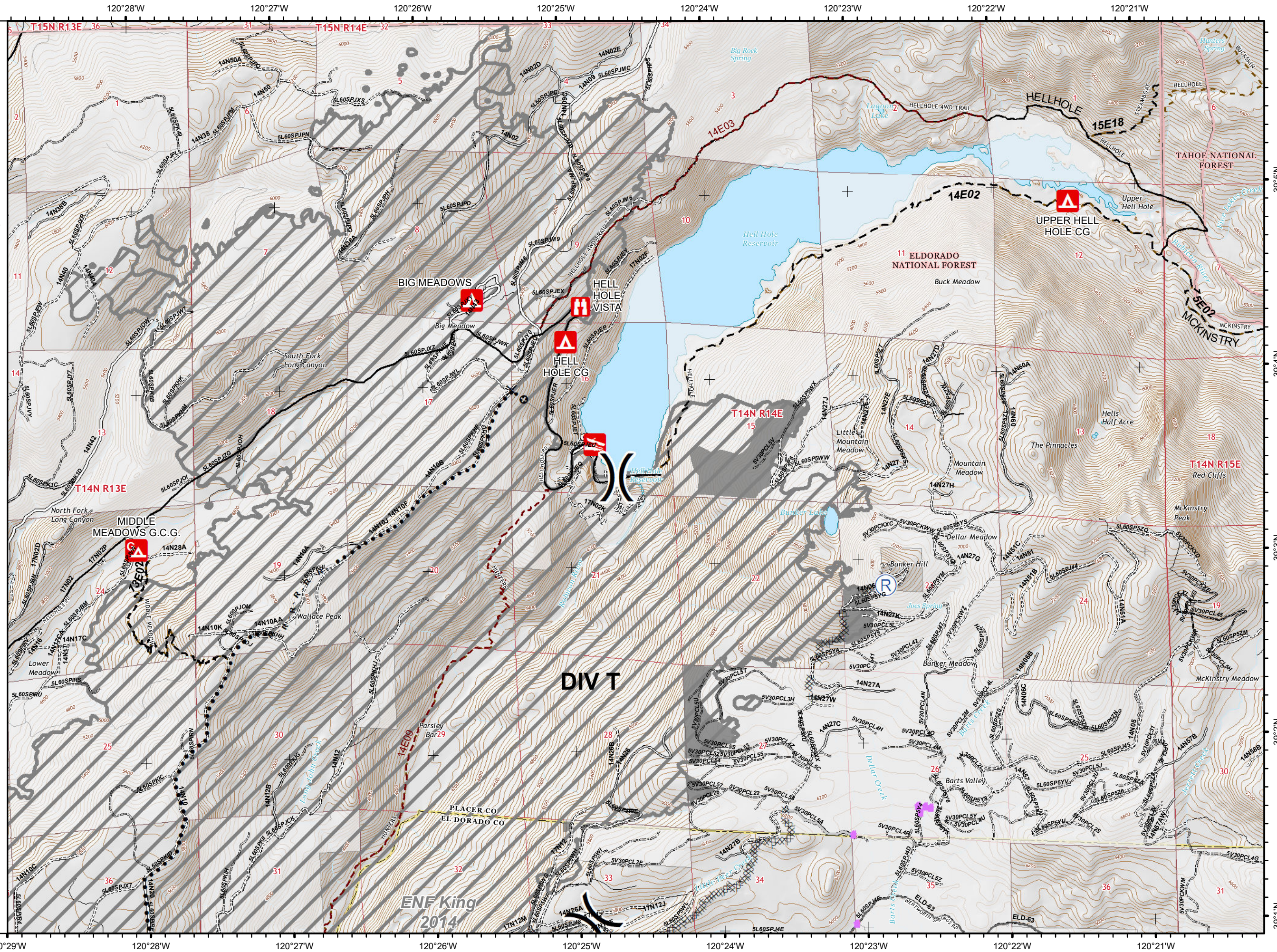
at 09/14/2020 22:30 Hrs



- Boating Site
- Campground
- Group Campground
- Observation Site
- 4WD
- Abandon Roads
- Seasonal Roads
- SPI Complete
- Tree Removal Areas
- Non-Defens...
- Prep and Leave
- Repeater
- Division Break
- Completed Dozer Line
- Road as Completed Line
- Access or Improved Road
- Proposed Dozer Line
- Planned Secondary Line
- Other
- Other Public Roads
- 1 - BASIC CUSTODIAL CARE (CLOSED)
- 2 - HIGH CLEARANCE VEHICLES
- 3 - SUITABLE FOR PASSENGER CARS
- 4 - MODERATE DEGREE OF USER COMFORT
- Non-Motorized Trail
- Motorized Trail
- S_R05_ENF.Tr...
- S_R05_ENF_R... Private
- FireHistory
- USDA FOREST SERVICE
- NON-FS
- TNM Derived Names
- State or Territory
- County or Equivalent
- Forest Service
- Local Road
- 4WD
- Trail



aseifert
09-16-2020 @ 2207 hrs
Acres from IR and field reports
WGS84 Lat/Long grid



ENF King
2014