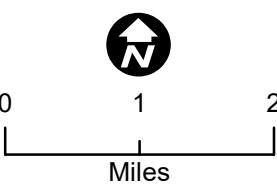
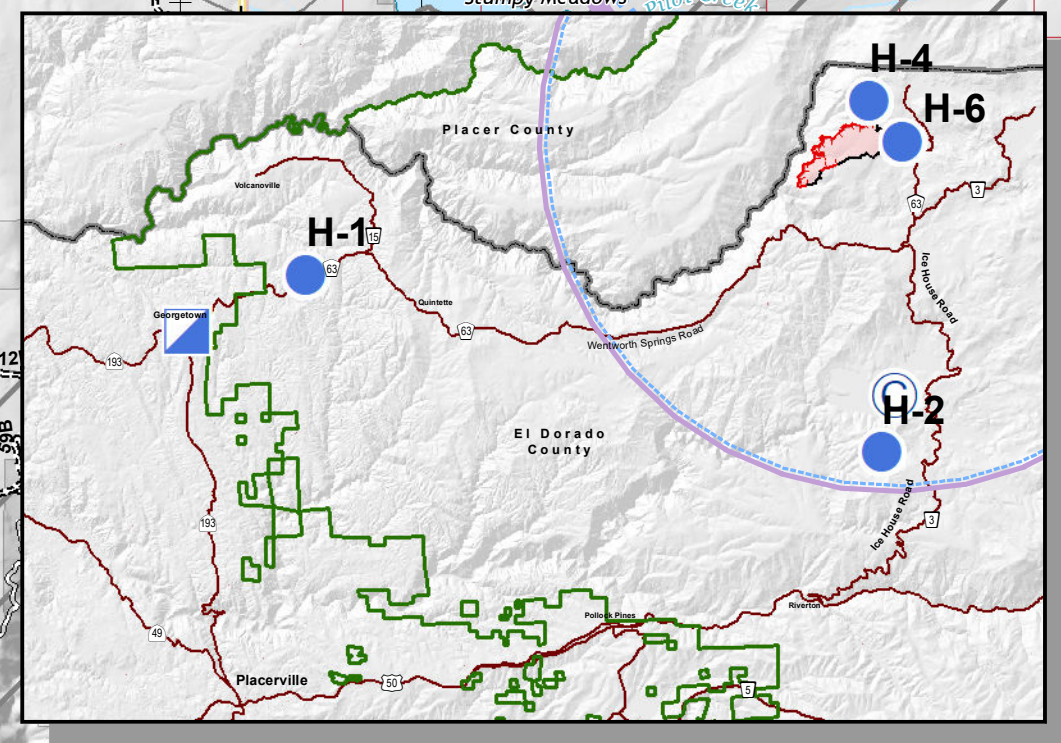
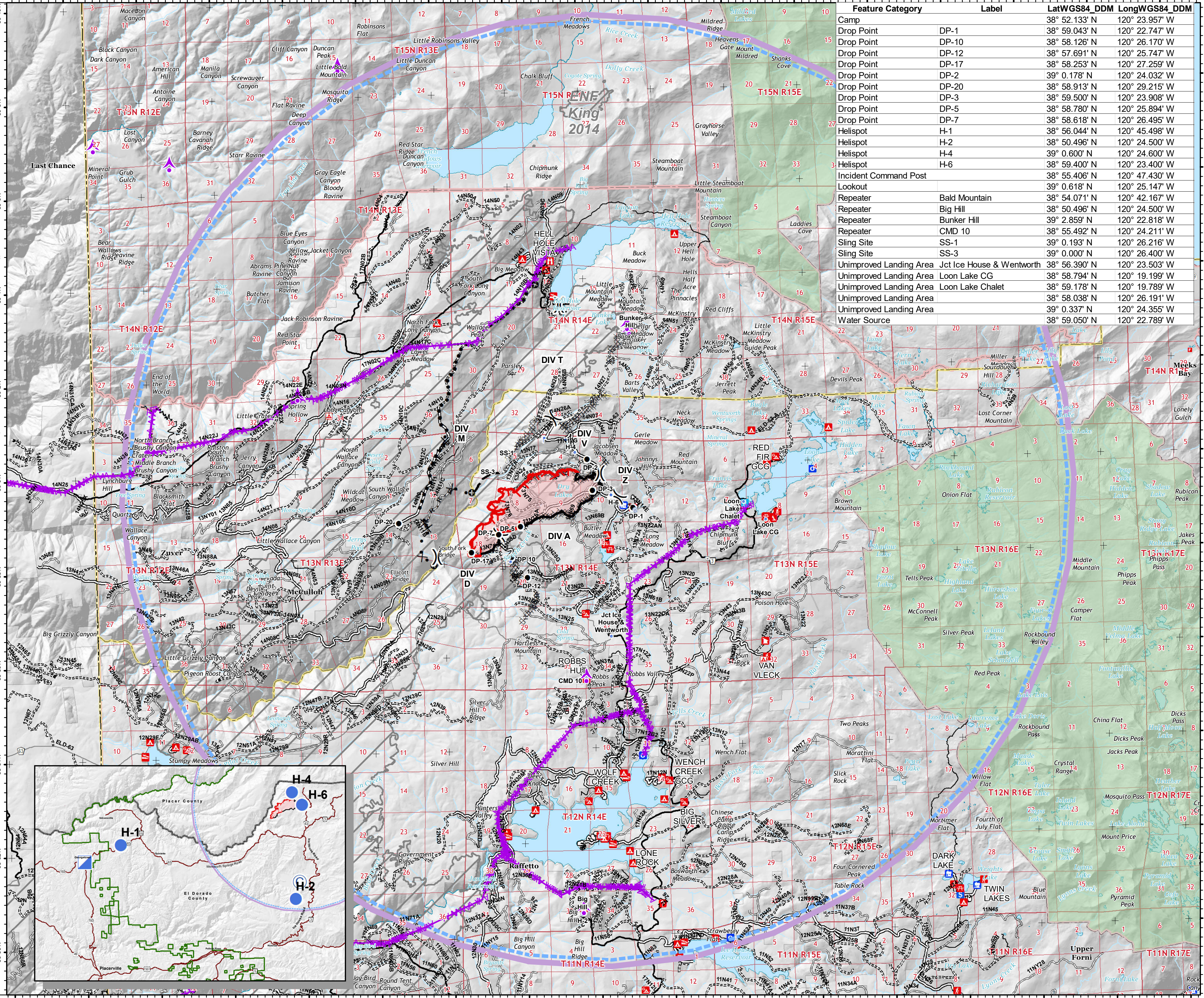


Pilot Fork Fire
 CA-ENF-027219
 09/17/2020 Day
 1,752 acres
 at 09/14/2020
 22:30 Hrs



- Legend**
- Aerial Hazard
 - Planned Secondary Line
 - Other
 - Wildfire Daily Fire Perimeter
 - Fire History
 - Forest Service
 - Wilderness
 - USDA FOREST SERVICE
 - NON-FS
 - Boating Site
 - Campground
 - Camping Area
 - Group Campground
 - Info Site/Fee Station
 - Interpretive Site (Admin)
 - Interpretive Site (Major)
 - Interpretive Site (Minor)
 - Lookout/Cabin
 - Observation Site
 - Organization Site
 - Picnic Site
 - Recreation Residence
 - Ski Area Nordic
 - Trailhead
 - Uncontrolled Fire Edge
 - Completed Dozer Line
 - Completed Hand Line
 - Road as Completed Line
 - Access or Improved Road
 - Planned Dozer Line
 - Planned Fire Line

Feature Category	Label	LatWGS84	DDM	LongWGS84	DDM
Camp		38° 52.133' N	120° 23.957' W		
Drop Point	DP-1	38° 59.043' N	120° 22.747' W		
Drop Point	DP-10	38° 58.126' N	120° 26.170' W		
Drop Point	DP-12	38° 57.691' N	120° 25.747' W		
Drop Point	DP-17	38° 58.253' N	120° 27.259' W		
Drop Point	DP-2	39° 0.178' N	120° 24.032' W		
Drop Point	DP-20	38° 58.913' N	120° 29.215' W		
Drop Point	DP-3	38° 59.500' N	120° 23.908' W		
Drop Point	DP-5	38° 58.780' N	120° 25.894' W		
Drop Point	DP-7	38° 58.618' N	120° 26.495' W		
Helispot	H-1	38° 56.044' N	120° 45.498' W		
Helispot	H-2	38° 50.496' N	120° 24.500' W		
Helispot	H-4	39° 0.600' N	120° 24.600' W		
Helispot	H-6	38° 59.400' N	120° 23.400' W		
Incident Command Post		38° 55.406' N	120° 47.430' W		
Lookout		39° 0.618' N	120° 25.147' W		
Repeater	Bald Mountain	38° 54.071' N	120° 42.167' W		
Repeater	Big Hill	38° 50.496' N	120° 24.500' W		
Repeater	Bunker Hill	39° 2.859' N	120° 22.818' W		
Repeater	CMD 10	38° 55.492' N	120° 24.211' W		
Sling Site	SS-1	39° 0.193' N	120° 26.216' W		
Sling Site	SS-3	39° 0.000' N	120° 26.400' W		
Unimproved Landing Area	Jct Ice House & Wentworth	38° 56.390' N	120° 23.503' W		
Unimproved Landing Area	Loon Lake CG	38° 58.794' N	120° 19.199' W		
Unimproved Landing Area	Loon Lake Chalet	38° 59.178' N	120° 19.789' W		
Unimproved Landing Area		38° 58.038' N	120° 26.191' W		
Unimproved Landing Area		39° 0.337' N	120° 24.355' W		
Water Source		38° 59.050' N	120° 22.789' W		



QR code

SOUTHWEST AREA INCIDENT MANAGEMENT TEAM 4

bkirk
 09-16-2020 @ 2154 hrs
 Acres from IR and field reports
 WGS84 Lat/Long grid