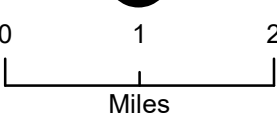


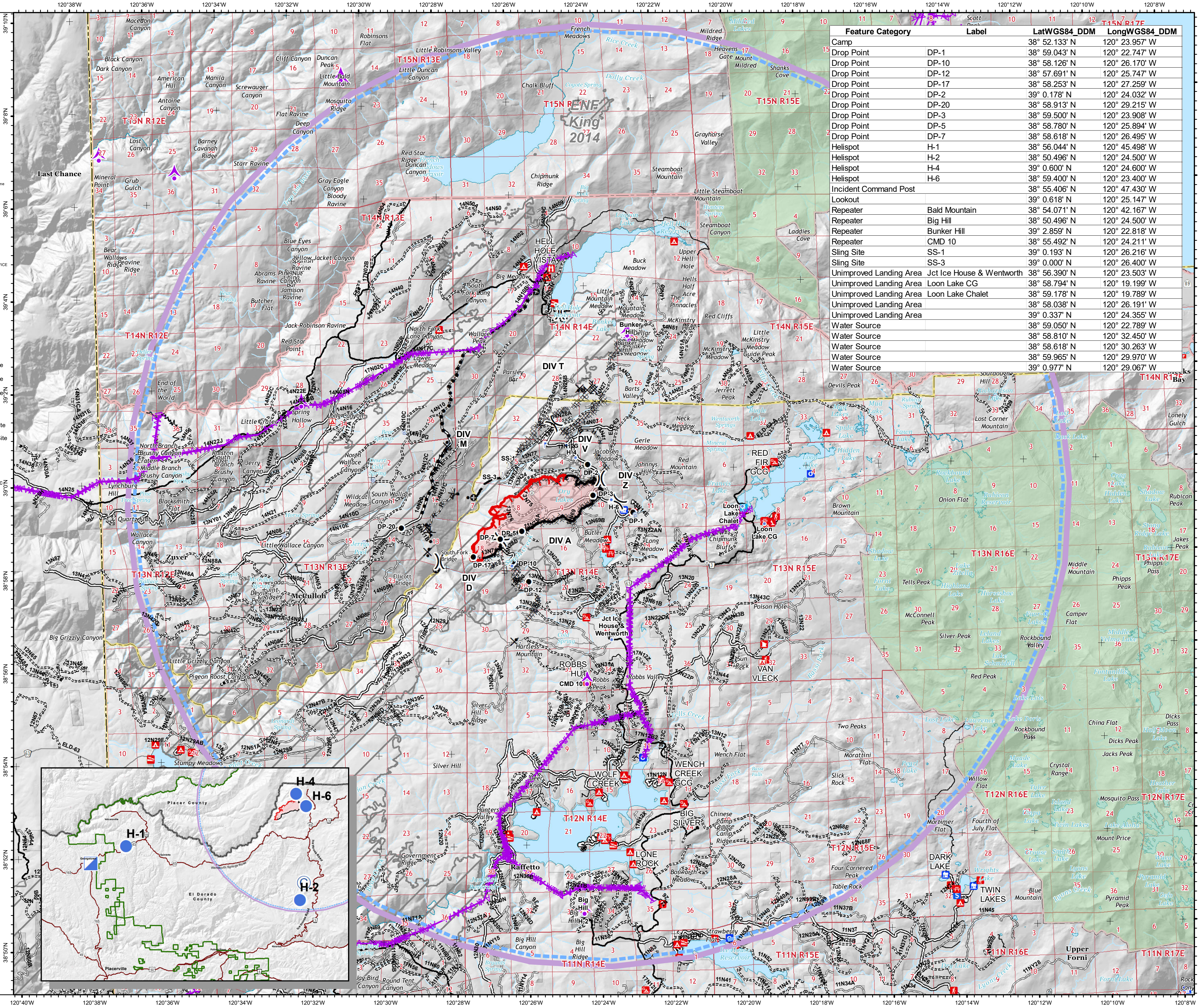
Pilot Fork Fire
CA-ENF-027219

09/18/2020 Day

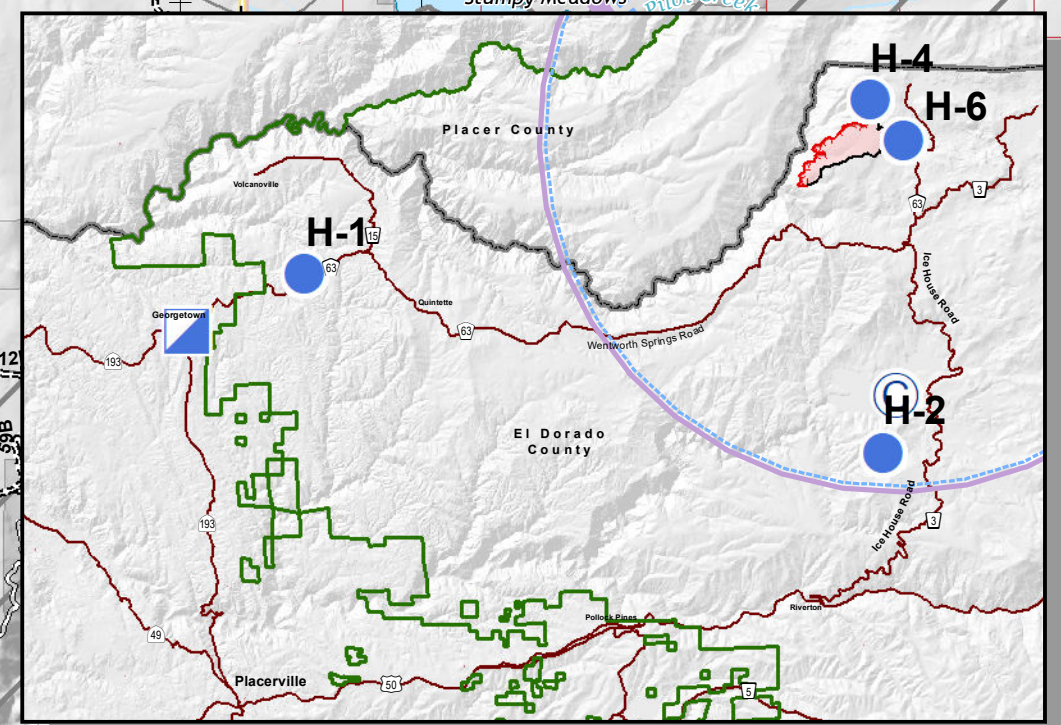
1,752 acres
at 09/14/2020
22:30 Hrs



- Legend**
- Aerial Hazard
 - Planned Secondary Line
 - Other
 - Wildfire Daily Fire Perimeter
 - FireHistory
 - Forest Service
 - Wilderness
 - USDA FOREST SERVICE
 - NON-FS
 - Boating Site
 - Campground
 - Camping Area
 - Group Campground
 - Info Site/Fee Station
 - Interpretive Site (Admin)
 - Interpretive Site (Major)
 - Interpretive Site (Minor)
 - Lookout/Cabin
 - Observation Site
 - Organization Site
 - Picnic Site
 - Recreation Residence
 - Ski Area Nordic
 - Trailhead
 - Uncontrolled Fire Edge
 - Completed Dozer Line
 - Completed Hand Line
 - R - R Road as Completed Line
 - Access or Improved Road
 - Planned Dozer Line
 - Planned Fire Line



Feature Category	Label	LatWGS84 DDM	LongWGS84 DDM
Camp		38° 52.133' N	120° 23.957' W
Drop Point	DP-10	38° 59.043' N	120° 22.747' W
Drop Point	DP-11	38° 58.126' N	120° 26.170' W
Drop Point	DP-12	38° 57.691' N	120° 25.747' W
Drop Point	DP-17	38° 58.253' N	120° 27.259' W
Drop Point	DP-2	39° 0.178' N	120° 24.032' W
Drop Point	DP-20	38° 58.913' N	120° 29.215' W
Drop Point	DP-3	38° 59.500' N	120° 23.908' W
Drop Point	DP-5	38° 58.780' N	120° 25.894' W
Drop Point	DP-7	38° 58.618' N	120° 26.495' W
Helispot	H-1	38° 56.044' N	120° 45.498' W
Helispot	H-2	38° 50.496' N	120° 24.500' W
Helispot	H-4	39° 0.618' N	120° 24.600' W
Helispot	H-6	38° 59.400' N	120° 23.400' W
Incident Command Post		38° 55.406' N	120° 47.430' W
Lookout		39° 0.618' N	120° 25.147' W
Repeater	Bald Mountain	38° 54.071' N	120° 42.167' W
Repeater	Big Hill	38° 50.496' N	120° 24.500' W
Repeater	Bunker Hill	39° 2.859' N	120° 22.818' W
Repeater	CMD 10	38° 55.492' N	120° 24.211' W
Sling Site	SS-1	39° 0.193' N	120° 26.216' W
Sling Site	SS-3	39° 0.000' N	120° 26.400' W
Unimproved Landing Area	Jct Ice House & Wentworth	38° 56.390' N	120° 23.503' W
Unimproved Landing Area	Loon Lake CG	38° 58.794' N	120° 19.199' W
Unimproved Landing Area	Loon Lake Chalet	38° 59.178' N	120° 19.789' W
Unimproved Landing Area		38° 58.038' N	120° 26.191' W
Unimproved Landing Area		39° 0.337' N	120° 24.355' W
Water Source		38° 59.050' N	120° 22.789' W
Water Source		38° 58.810' N	120° 32.450' W
Water Source		38° 58.618' N	120° 30.263' W
Water Source		38° 59.965' N	120° 29.970' W
Water Source		39° 0.977' N	120° 29.067' W



Southwest Area
INCIDENT MANAGEMENT TEAM 4

bkirk
09-17-2020 @ 2044 hrs
Acres from IR and field reports
WGS84 Lat/Long grid