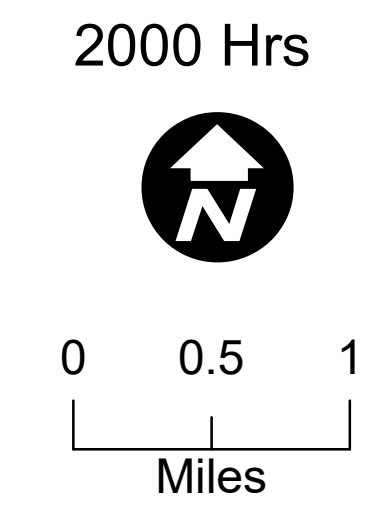


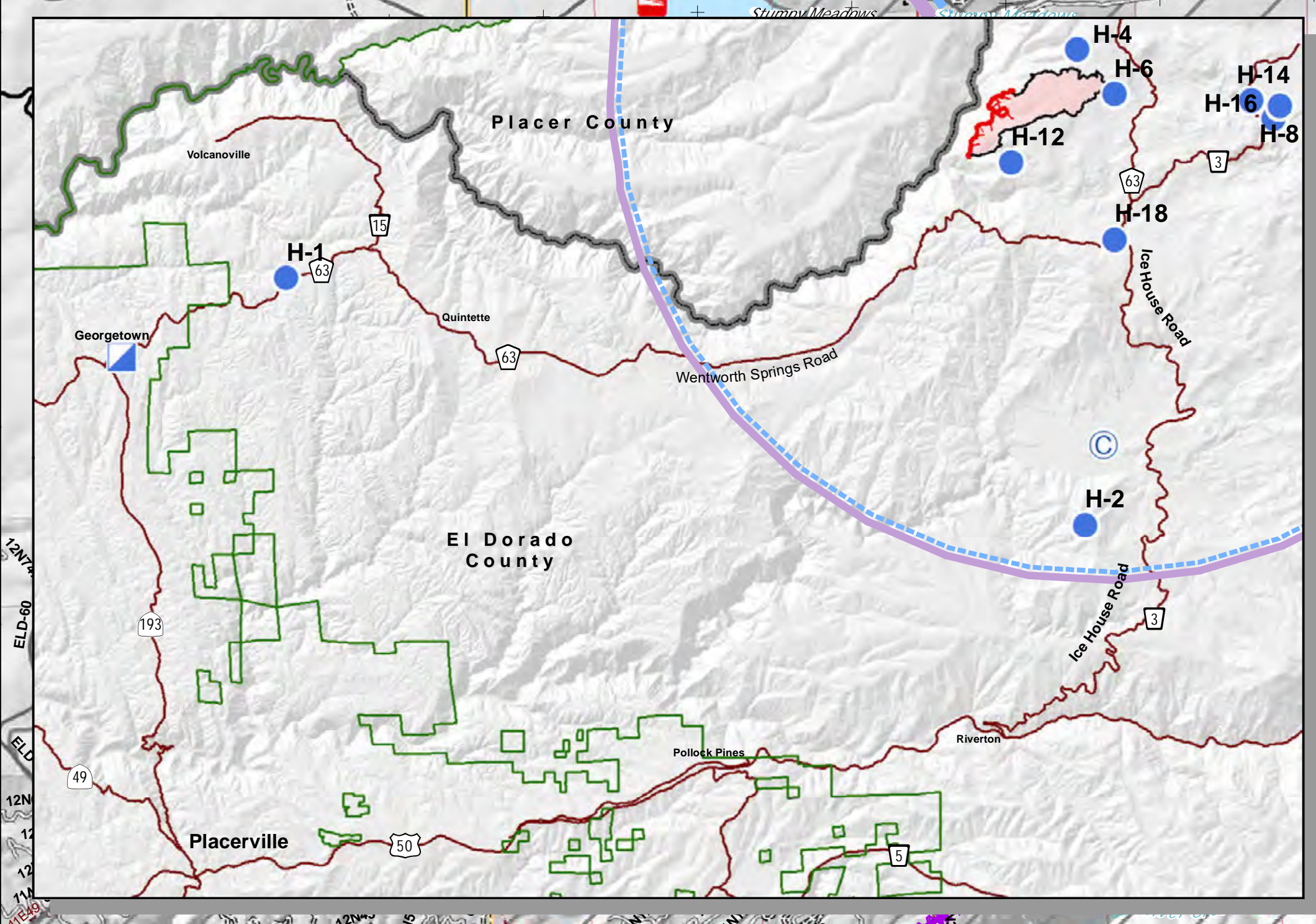
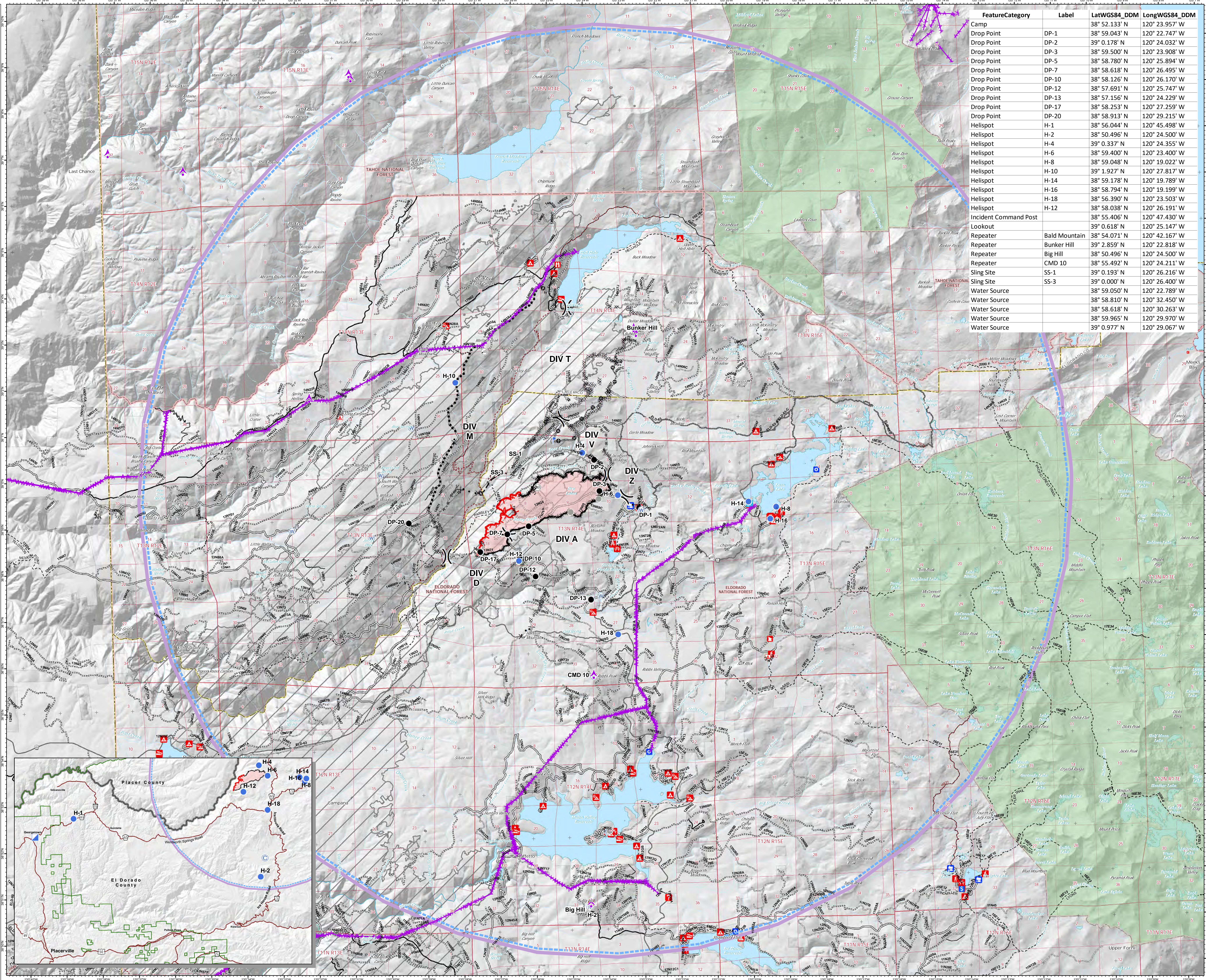
Air Ops Fork Fire CA-ENF-027219

09/22/2020 Day
1,667 acres
at 09/20/2020



- Aerial Hazard
- Camp
- Drop Point
- Gate
- Helispot
- Internet Access
- Lookout
- Repeater
- Sling Site
- Water Source
- Other
- Division Break
- Uncontrolled Fire Edge
- Contained Line
- Completed Dozer Line
- Completed Hand Line
- Road as Completed Line
- Access or Improved Road
- Proposed Dozer Line
- Planned Fire Line
- Planned Secondary Line
- Road Repair
- Other
- Wildfire Daily Fire Perimeter
- State or US Highway
- Other Public Roads
- Other Road
- 1 - BASIC CUSTODIAL CARE (CLOSED)
- 2 - HIGH CLEARANCE VEHICLES
- 3 - SUITABLE FOR PASSENGER CARS
- 4 - MODERATE DEGREE OF USER COMFORT
- Non-Motorized Trail
- Motorized Trail
- S_ROS_ENF_TravelRoute_In
- S_ROS_ENF_Road Private
- Foothold
- USDA FOREST SERVICE
- NON-FS
- TFR 0_1982
- Wilderness
- School
- Fire Station
- State or Territory
- County or Equivalent
- Forest Service
- Boating Site
- Campground
- Camping Area
- Group Campground
- Info Site/Fee Station
- Interpretive Site (Admin)
- Interpretive Site (Major)
- Interpretive Site (Minor)
- Lookout/Cabin
- Observation Site
- Organization Site
- Picnic Site
- Recreation Residence
- Ski Area Nordic
- Trailhead

FeatureCategory	Label	LatWGS84_DDM	LongWGS84_DDM
Camp		38° 52.133' N	120° 23.957' W
Drop Point	DP-1	38° 59.043' N	120° 22.747' W
Drop Point	DP-2	39° 0.178' N	120° 24.032' W
Drop Point	DP-3	38° 59.500' N	120° 23.908' W
Drop Point	DP-5	38° 58.780' N	120° 25.894' W
Drop Point	DP-7	38° 58.618' N	120° 26.495' W
Drop Point	DP-10	38° 58.126' N	120° 26.170' W
Drop Point	DP-12	38° 57.691' N	120° 25.747' W
Drop Point	DP-13	38° 57.156' N	120° 24.229' W
Drop Point	DP-17	38° 58.253' N	120° 27.259' W
Drop Point	DP-20	38° 58.913' N	120° 29.215' W
Helispot	H-1	38° 56.044' N	120° 45.498' W
Helispot	H-2	38° 50.496' N	120° 24.500' W
Helispot	H-4	39° 0.337' N	120° 24.355' W
Helispot	H-6	38° 59.400' N	120° 23.400' W
Helispot	H-8	38° 59.048' N	120° 19.022' W
Helispot	H-10	39° 1.927' N	120° 27.817' W
Helispot	H-14	38° 59.178' N	120° 19.789' W
Helispot	H-16	38° 58.794' N	120° 19.199' W
Helispot	H-18	38° 56.390' N	120° 23.503' W
Helispot	H-12	38° 58.038' N	120° 26.191' W
Incident Command Post		38° 55.406' N	120° 47.430' W
Lookout		39° 0.618' N	120° 25.147' W
Repeater	Bald Mountain	38° 54.071' N	120° 42.167' W
Repeater	Bunker Hill	39° 2.859' N	120° 22.818' W
Repeater	Big Hill	38° 50.496' N	120° 24.500' W
Repeater	CMD 10	38° 55.492' N	120° 24.211' W
Sling Site	SS-1	39° 0.193' N	120° 26.216' W
Sling Site	SS-3	39° 0.000' N	120° 26.400' W
Water Source		38° 59.050' N	120° 22.789' W
Water Source		38° 58.810' N	120° 32.450' W
Water Source		38° 58.618' N	120° 30.263' W
Water Source		38° 59.965' N	120° 29.970' W
Water Source		39° 0.977' N	120° 29.067' W



09-21-2020 2020 hrs
Acres from IR and field reports
WGS84 Lat/Long grid