

Briefing Fork Fire CA-ENF-027219

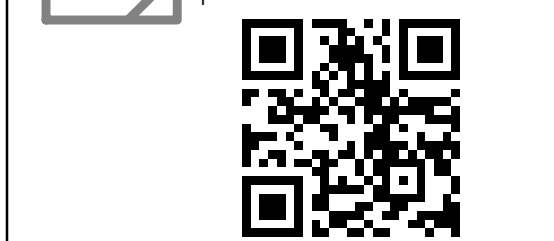
09/22/2020 Day
1,667 acres
at 09/21/2020
1940 Hrs



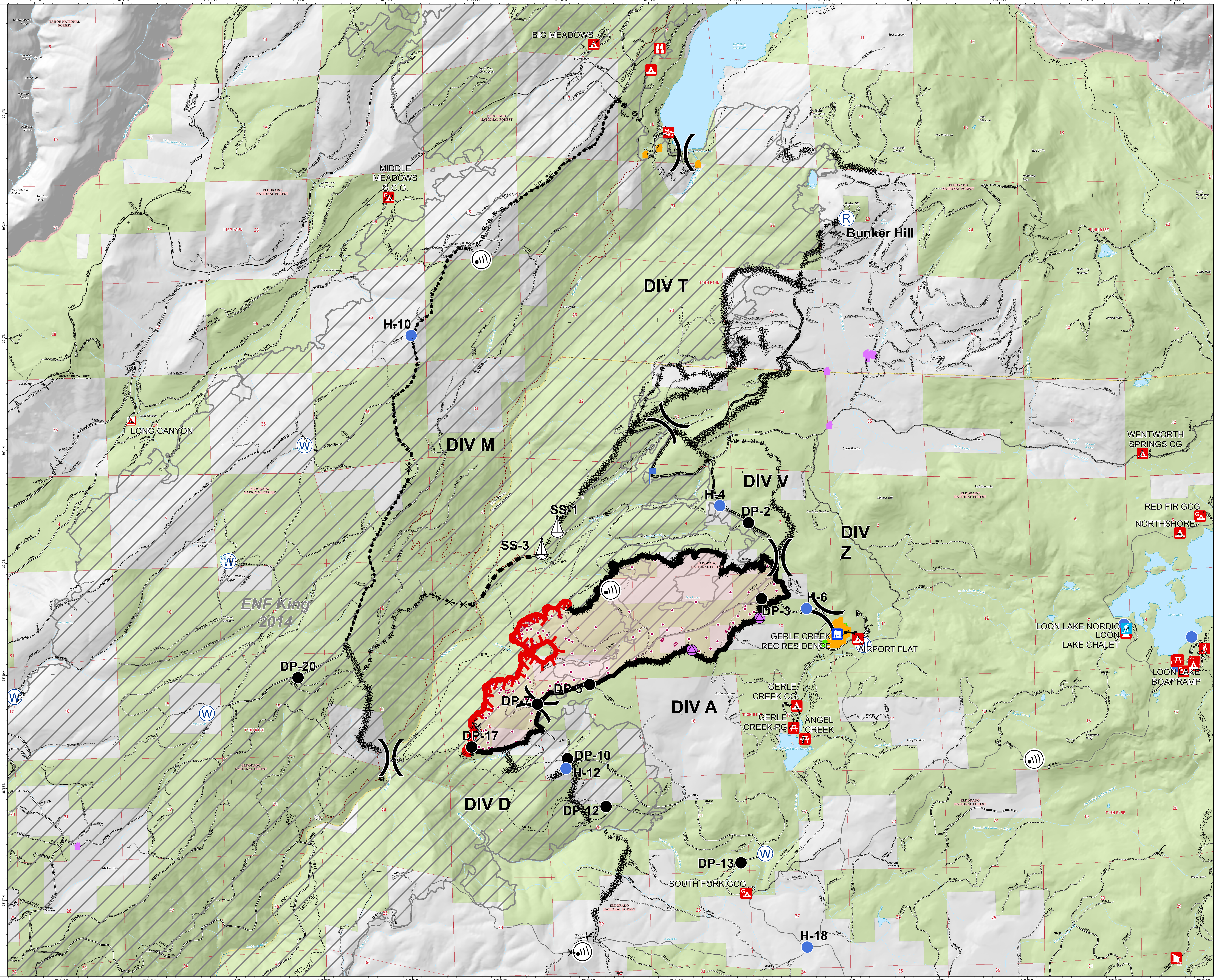
0 0.25 0.5
Miles

- Defensible - Stand Alone
- Defensible - Prep and Hold
- Non-Defensible - Prep and Leave
- Warning Sign
- Campground
- Camping Area
- Group Campground
- Leisure/Can
- Observation Site
- Photo Site
- Recreation Reserve
- Sk Area Node
- Traffic
- 20000000 Fire Heat Parameter
- 20000000 Fire Intense Heat
- 20000000 Fire Intense Heat Source
- 20000000 Fire Scattered Heat
- Ranger Point
- Drop Point
- Gate
- Hotspot
- Internal Access
- Lookout
- Reservoir
- Skip Site
- Water Source
- Division Break

- Uncontrolled Fire Edge
- Controlled Line
- Completed Doser Line
- H - H - H - Completed Hand Line
- R - R - R - Road as Completed Line
- Access or Improved Road
- Proposed Doser Line
- Planned Fire Line
- Planned Secondary Line
- Road Right-of-Way
- Road Right-of-Way
- Other
- Uncontrolled Fire Edge
- Access or Improved Road
- Road Right-of-Way
- Controlled Line
- Completed Doser Line
- H - H - H - Completed Hand Line
- R - R - R - Road as Completed Line
- Proposed Doser Line
- Planned Fire Line
- Planned Secondary Line
- Other
- Wildfire Daily Fire Parameter



aseffort 09-21-2020 2200 hrs
Acres from IR and field reports
WGS84 Lat/Long grid



38°27'N
120°21'W
120°22'W
120°23'W
120°24'W
120°25'W
120°26'W
120°27'W
120°28'W
120°29'W
120°30'W
120°31'W
120°32'W
120°33'W
120°34'W
120°35'W
120°36'W
120°37'W
120°38'W
120°39'W
120°40'W
120°41'W
120°42'W
120°43'W
120°44'W
120°45'W
120°46'W
120°47'W
120°48'W
120°49'W
120°50'W
120°51'W
120°52'W
120°53'W
120°54'W
120°55'W
120°56'W
120°57'W
120°58'W
120°59'W
121°00'W
38°27'N
38°28'N
38°29'N
38°30'N
38°31'N
38°32'N
38°33'N
38°34'N
38°35'N
38°36'N
38°37'N
38°38'N
38°39'N
38°40'N
38°41'N
38°42'N
38°43'N
38°44'N
38°45'N
38°46'N
38°47'N
38°48'N
38°49'N
38°50'N
38°51'N
38°52'N
38°53'N
38°54'N
38°55'N
38°56'N
38°57'N
38°58'N
38°59'N
39°00'N