

Briefing Fork Fire CA-ENF-027219

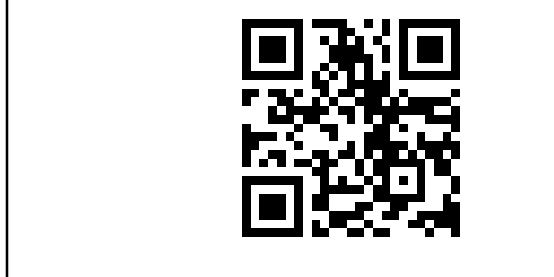
09/23/2020 Day
1,667 acres
at 09/22/2020
1900 Hrs



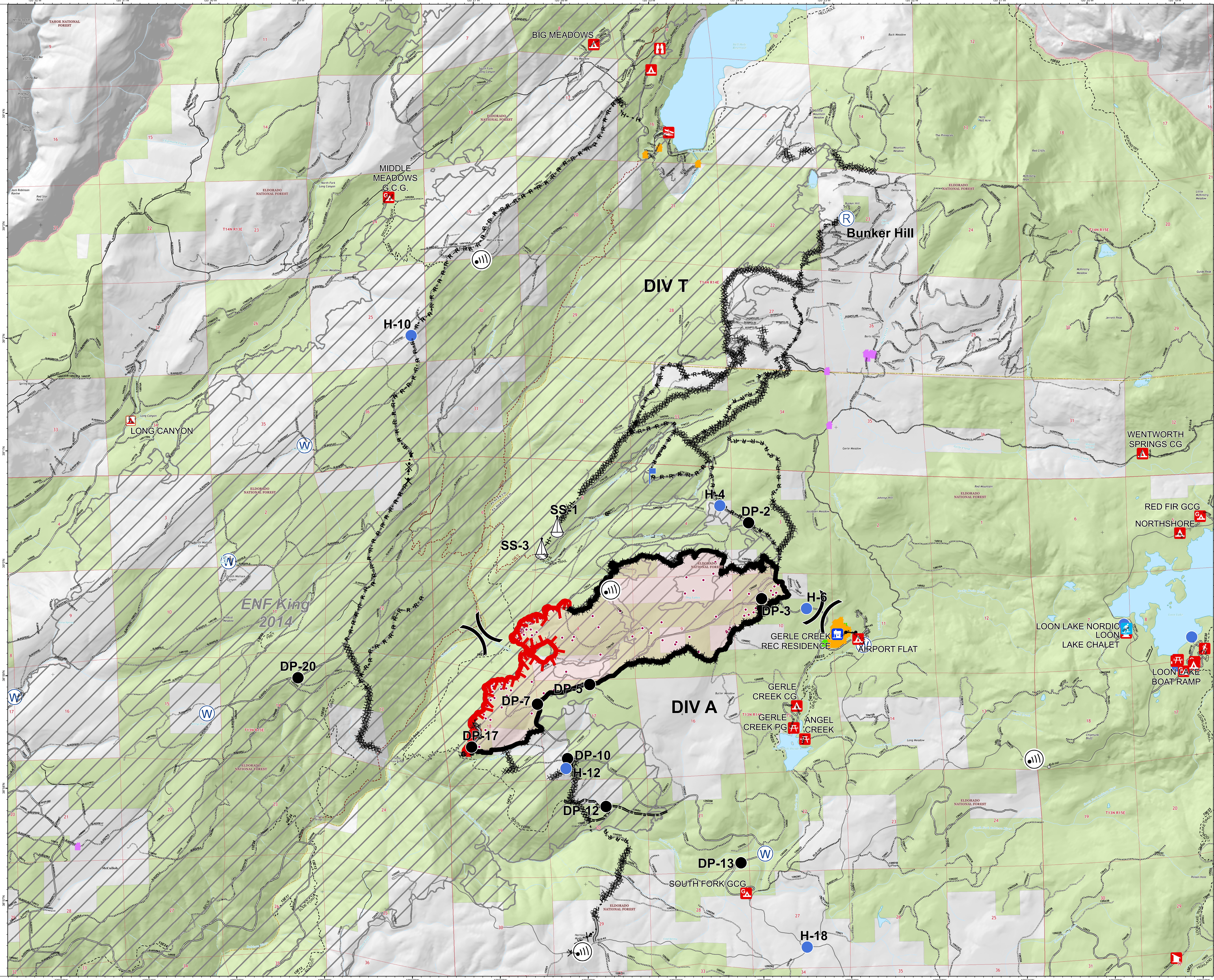
0 0.25 0.5
Miles

- Defensible - Stand Alone
- Defensible - Prep and Hold
- Non-Defensible - Prep and Leave
- Warning Sign
- Campground
- Camping Area
- Group Campground
- Leisure/Recreation
- Observation Site
- Public Site
- Recreation Reserve
- Skid Steer Road
- Trailhead
- 2020/09/23 Fire Heat Perimeter
- 2020/09/23 Fire Isolated Heat Sources
- 2020/09/23 Fire Scattered Heat
- Drop Point
- Gate
- Hotspot
- Internal Access
- Lookout
- Propagator
- Shag Site
- Water Source
- Division Break

- Uncontrolled Fire Edge
- Controlled Fire Line
- Completed Fire Line
- H - H - H - H - Completed Hand Line
- R - R - R - R - Road as Completed Line
- Access or Improved Road
- Proposed Fire Line
- Road Rafter
- Road Rafter
- Other
- Uncontrolled Fire Edge
- Access or Improved Road
- Road Rafter
- Controlled Line
- Completed Fire Line
- H - H - H - H - Completed Hand Line
- R - R - R - R - Road as Completed Line
- Proposed Fire Line
- Other
- PRC 2020
- Address Only Fire Perimeter
- Parade



aseffort
09-23-2020 2226 hrs
Acres from IR and field reports
WGS84 Lat/Long grid



ENF King
2014

DIV T

DIV A

Bunker Hill

LONG CANYON

WENTWORTH SPRINGS CG

RED FIR GCG
NORTHSHORE

LOON LAKE NORDIC
LOON LAKE CHALET

LOON LAKE
BOAT RAMP

GERLE CREEK
REC RESIDENCE
AIRPORT FLAT

GERLE CREEK CG
GERLE CREEK PG
ANGEL CREEK

SOUTH FORK GCG

H-10

SS-1

SS-3

H-4

DP-2

H-6

DP-3

DP-20

DP-7

DP-5

DP-17

DP-10

H-12

DP-12

DP-13

H-18