

Operations Fork Fire CA-ENF-027219

09/24/2020 Day

1,667 acres

at 09/22/2020

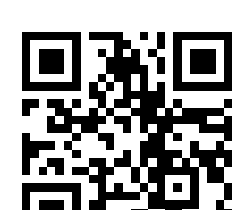
1900 Hrs



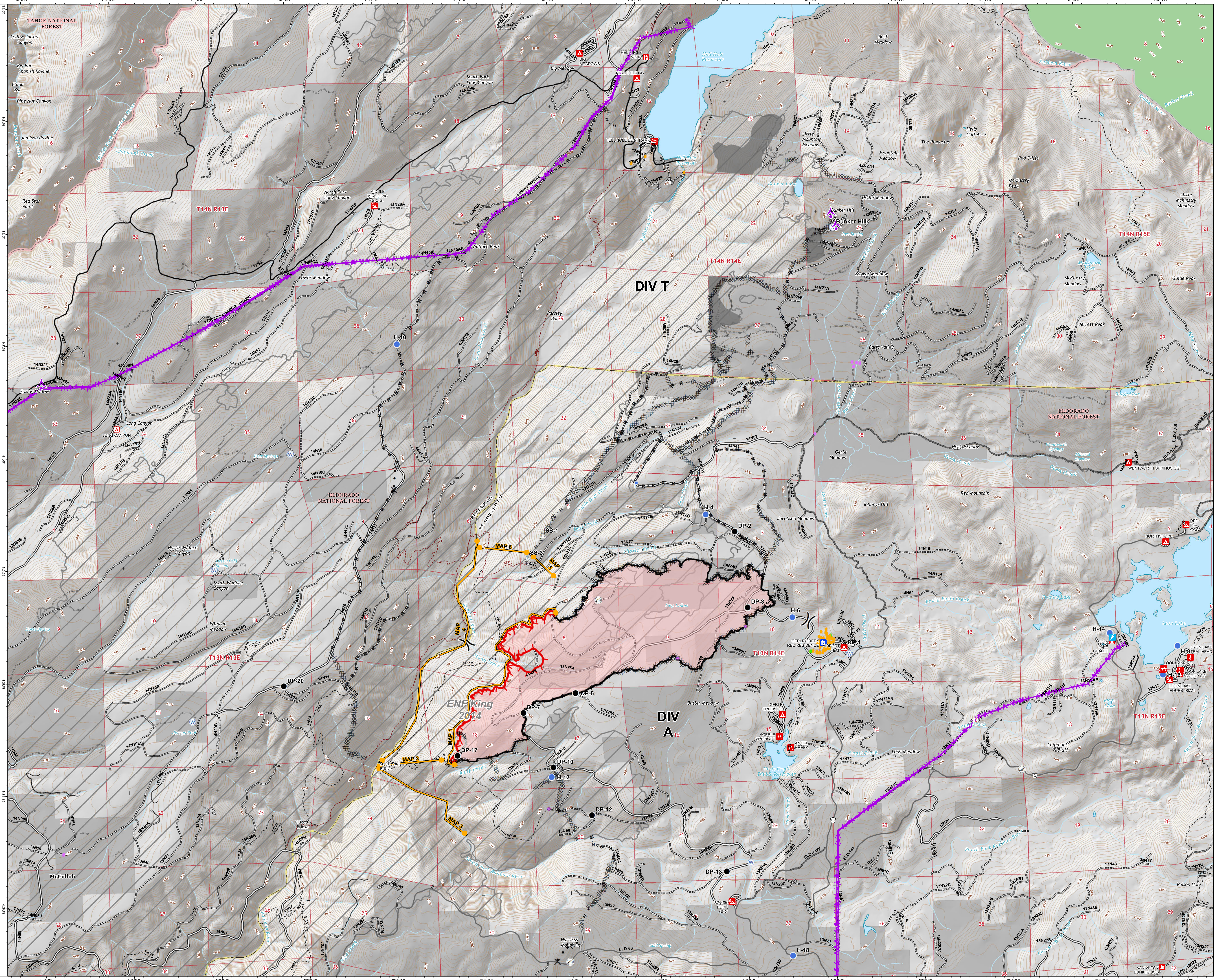
0 0.25 0.5

Miles

- Defensible Stand Alone
- Defensible - Prep and Hold
- Non-Defensible Prep and Leave
- Fork_MAPs
- Aviation Obstacle
- Aerial Hazard
- Wilderness
- SPI Complete
- Tree Removal Areas
- Aerial Hazard
- Drop Point
- Gate
- Hillspot
- Internet Access
- Lookout
- Repair Point
- Repeater
- Sling Site
- Water Source
- Division Break
- Uncontrolled Fire Edge
- Contained Line
- Completed Dozer Line
- Completed Hand Line
- Road as Completed Line
- Access or Improved Road
- Proposed Dozer Line
- Road Repair
- Other
- Wildfire Daily Fire Perimeter
- Other Public Roads
- Other Road
- 1 - BASIC CUSTODIAL CARE (CLOSED)
- 2 - HIGH CLEARANCE VEHICLES
- 3 - SUITABLE FOR PASSENGER CARS
- 4 - MODERATE DEGREE OF USER COMFORT
- Non-Motorized Trail
- Motorized Trail
- S. ROS. ENF. Private
- FireHistory
- USDA FOREST SERVICE
- NON-FS
- State or Territory
- County or Equivalent
- Forest Service
- Boating Site
- Campground
- Camping Area
- Group Campground
- Lookout/Cabin
- Observation Site
- Picnic Site
- Recreation Residence
- Ski Area Nordic
- Trailhead



aseffort
09-23-2020 1857 hrs
Acres from IR and field reports
WGS84 Lat/Long grid



VAN VLECK BUNKHOUSE