

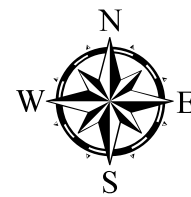
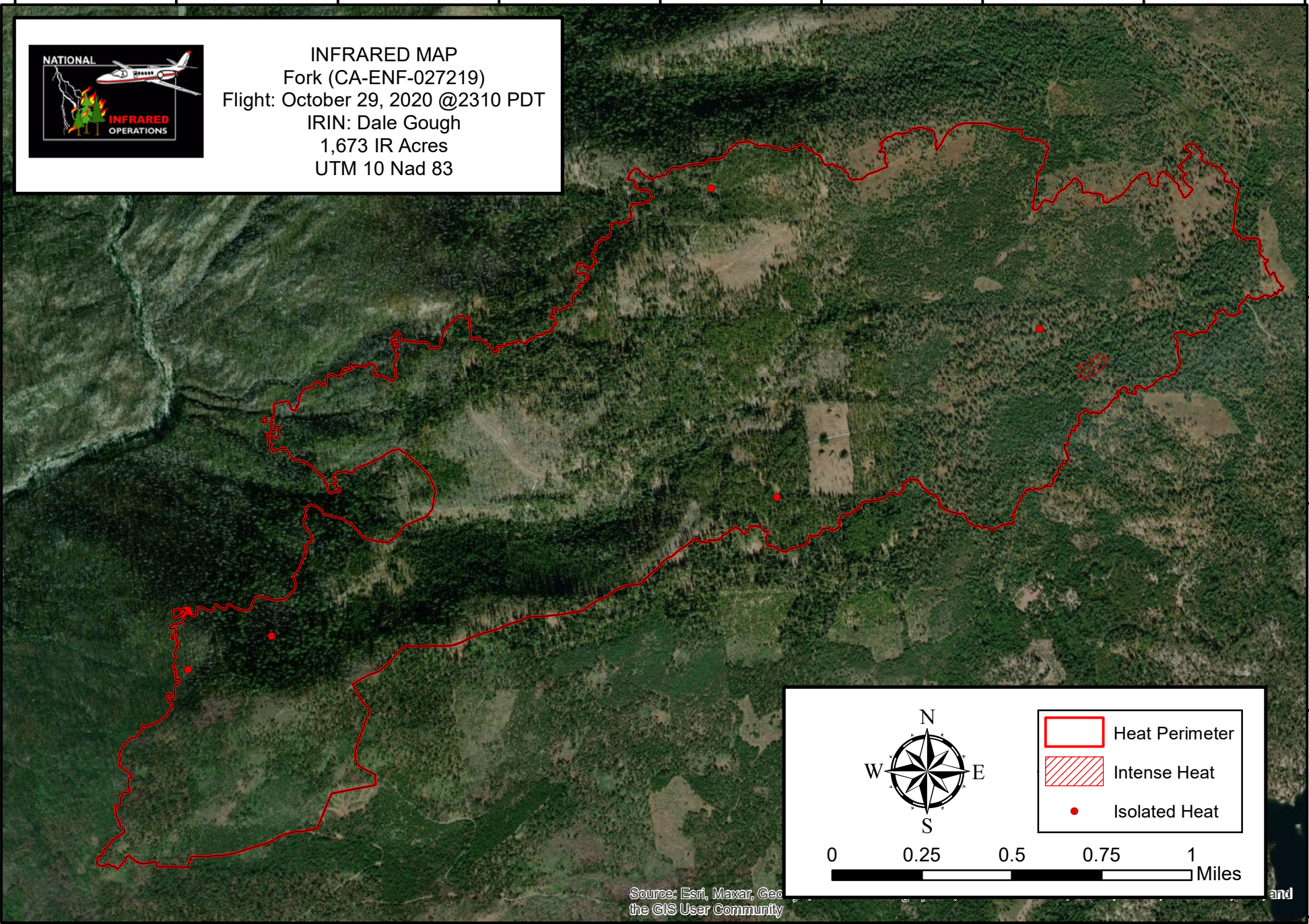
120°27'30"W 120°27'0"W 120°26'30"W 120°26'0"W 120°25'30"W 120°25'0"W 120°24'30"W 120°24'0"W 120°23'30"W






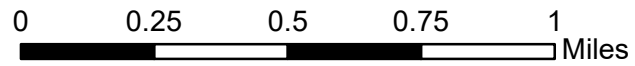
**INFRARED MAP**  
Fork (CA-ENF-027219)  
Flight: October 29, 2020 @2310 PDT  
IRIN: Dale Gough  
1,673 IR Acres  
UTM 10 Nad 83

39°0'0"N  
38°59'30"N  
38°59'0"N  
38°58'30"N

39°0'0"N  
38°59'30"N  
38°59'0"N  
38°58'30"N  
38°58'0"N



-  Heat Perimeter
-  Intense Heat
-  Isolated Heat



Source: Esri, Maxar, Geo  
the GIS User Community

and

120°27'30"W 120°27'0"W 120°26'30"W 120°26'0"W 120°25'30"W 120°25'0"W 120°24'30"W 120°24'0"W